

# Home data report

## 1434 Cloverdale Road, Charles Town, WV, US



**Total Area: 3235 sq. ft**

Basement: 0 sq. ft, 1st Floor: 1524 sq. ft, 2nd Floor: 1711 sq. ft

Excluded: Basement 1523 sq. ft, Patio 137 sq. ft, Garage 589 sq. ft, Screened porch 188 sq. ft, Porch 211 sq. ft, Deck 241 sq. ft, Walls: 335 sq. ft

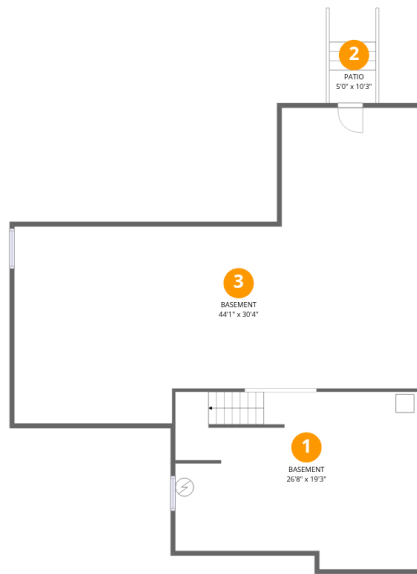
### Property summary

 **3** Floors

 **4** Bedrooms

 **3** Bathrooms

 **1** Garages



## Room dimensions

Floor 1 Below grade

Total: 0sqft

Excluded: 1575sqft

#		Dimensions	sqft	Counted as living area
1	Basement	26'8" x 19'3"	512 sq. ft	No
2	Patio	5'0" x 10'3"	52 sq. ft	No
3	Basement	44'1" x 30'4"	1339 sq. ft	No

# Home data report

## 1434 Cloverdale Road, Charles Town, WV, US



## Room dimensions

Floor 2

Total: 1524sqft

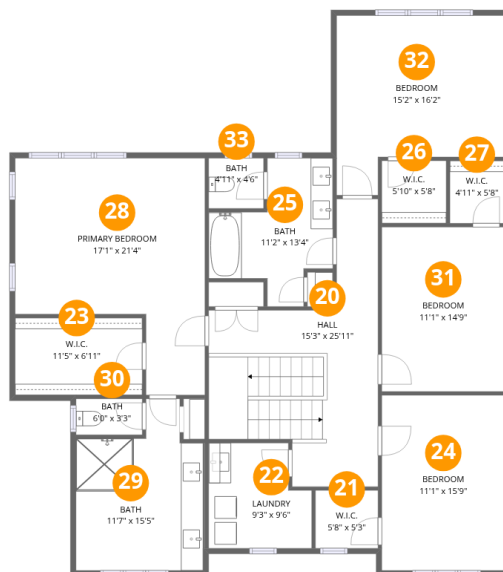
Excluded: 1314sqft

#		Dimensions	sqft	Counted as living area
4	Laundry	17'1" x 5'6"	93 sq. ft	Yes
5	Screened Porch	15'3" x 12'4"	188 sq. ft	No
6	Garage	23'11" x 24'7"	589 sq. ft	No
7	Bath	5'11" x 9'6"	56 sq. ft	Yes
8	Kitchen	11'1" x 20'4"	225 sq. ft	Yes
9	Foyer	9'0" x 17'7"	158 sq. ft	Yes
10	Office	11'1" x 16'6"	183 sq. ft	Yes
11	Family Room	15'2" x 12'10"	194 sq. ft	Yes
12	Living Room	17'5" x 15'6"	270 sq. ft	Yes
13	Porch	24'10" x 9'1"	225 sq. ft	No
14	Patio	17'5" x 6'3"	109 sq. ft	No

Home data report

**1434 Cloverdale Road, Charles Town, WV, US**

#		Dimensions	sqft	Counted as living area
15	Deck	3'10" x 5'6"	21 sq. ft	No
16	Pantry	4'0" x 3'11"	16 sq. ft	Yes
17	Hall	1'2" x 3'6"	4 sq. ft	Yes
18	Dining Area	15'7" x 17'6"	273 sq. ft	Yes
19	Deck	12'10" x 12'6"	160 sq. ft	No



## Room dimensions

Floor 3

Total: 1711 sqft Excluded: 0 sqft

#		Dimensions	sqft	Counted as living area
20	Hall	15'3" x 25'11"	395 sq. ft	Yes
21	W.I.C.	5'8" x 5'3"	29 sq. ft	Yes
22	Laundry	9'3" x 9'6"	88 sq. ft	Yes
23	W.I.C.	11'5" x 6'11"	80 sq. ft	Yes
24	Bedroom	11'1" x 15'9"	175 sq. ft	Yes
25	Bath	11'2" x 13'4"	149 sq. ft	Yes
26	W.I.C.	5'10" x 5'8"	33 sq. ft	Yes
27	W.I.C.	4'11" x 5'8"	28 sq. ft	Yes
28	Primary Bedroom	17'1" x 21'4"	364 sq. ft	Yes
29	Bath	11'7" x 15'5"	179 sq. ft	Yes
30	Bath	6'0" x 3'3"	19 sq. ft	Yes

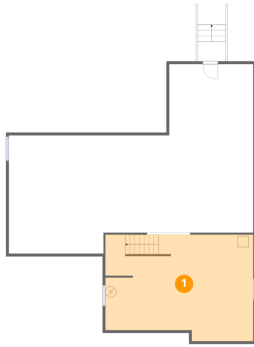
Home data report

**1434 Cloverdale Road, Charles Town, WV, US**

#		Dimensions	sqft	Counted as living area
31	Bedroom	11'1" x 14'9"	164 sq. ft	Yes
32	Bedroom	15'2" x 16'2"	245 sq. ft	Yes
33	Bath	4'11" x 4'6"	22 sq. ft	Yes

## 1 Floor 1 - Basement

---

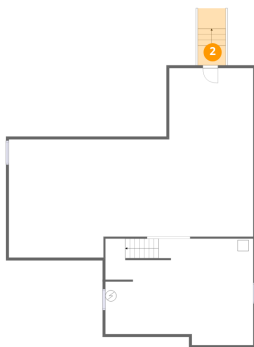


Dimensions: 26'8" x 19'3"  
Area: 512 sq. ft  
Counted as living area: No

Heated: Yes  
Finished: No  
Enclosed: Yes  
Contiguous: Yes  
Permitted: Yes  
Wet space: No  
Addition: No  
Conversion: No

## 2 Floor 1 - Patio

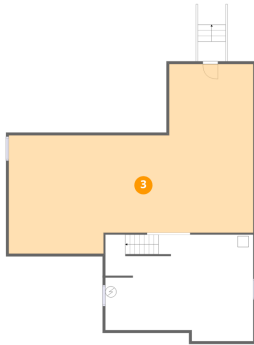
---



Dimensions: 5'0" x 10'3"  
Area: 52 sq. ft  
Counted as living area: No

Heated: No  
Finished: No  
Enclosed: No  
Contiguous: Yes  
Permitted: Yes  
Wet space: No  
Addition: No  
Conversion: No

### 3 Floor 1 - Basement



Dimensions: 44'1" x 30'4"  
Area: 1339 sq. ft  
Counted as living area: No

Heated: Yes  
Finished: No  
Enclosed: Yes  
Contiguous: Yes  
Permitted: Yes  
Wet space: No  
Addition: No  
Conversion: No

### 4 Floor 2 - Laundry



Dimensions: 17'1" x 5'6"  
Area: 93 sq. ft  
Counted as living area: Yes

Heated: Yes  
Finished: Yes  
Enclosed: Yes  
Contiguous: Yes  
Permitted: Yes  
Wet space: No  
Addition: No  
Conversion: No

### 5 Floor 2 - Screened Porch



Dimensions: 15'3" x 12'4"  
Area: 188 sq. ft  
Counted as living area: No

Heated: No  
Finished: No  
Enclosed: No  
Contiguous: Yes  
Permitted: Yes  
Wet space: No  
Addition: No  
Conversion: No

## 6 Floor 2 - Garage



Dimensions: 23'11" x 24'7"  
Area: 589 sq. ft  
Counted as living area: No

Heated: No  
Finished: No  
Enclosed: Yes  
Contiguous: Yes  
Permitted: Yes  
Wet space: No  
Addition: No  
Conversion: No

## 7 Floor 2 - Bath



Dimensions: 5'11" x 9'6"  
Area: 56 sq. ft  
Counted as living area: Yes

Heated: Yes  
Finished: Yes  
Enclosed: Yes  
Contiguous: Yes  
Permitted: Yes  
Wet space: Yes  
Addition: No  
Conversion: No

## 8 Floor 2 - Kitchen



Dimensions: 11'1" x 20'4"  
Area: 225 sq. ft  
Counted as living area: Yes

Heated: Yes  
Finished: Yes  
Enclosed: Yes  
Contiguous: Yes  
Permitted: Yes  
Wet space: No  
Addition: No  
Conversion: No

## 9 Floor 2 - Foyer



Dimensions: 9'0" x 17'7"  
Area: 158 sq. ft  
Counted as living area: Yes

Heated: Yes  
Finished: Yes  
Enclosed: Yes  
Contiguous: Yes  
Permitted: Yes  
Wet space: No  
Addition: No  
Conversion: No

## 10 Floor 2 - Office



Dimensions: 11'1" x 16'6"  
Area: 183 sq. ft  
Counted as living area: Yes

Heated: Yes  
Finished: Yes  
Enclosed: Yes  
Contiguous: Yes  
Permitted: Yes  
Wet space: No  
Addition: No  
Conversion: No

## 11 Floor 2 - Family Room



Dimensions: 15'2" x 12'10"  
Area: 194 sq. ft  
Counted as living area: Yes

Heated: Yes  
Finished: Yes  
Enclosed: Yes  
Contiguous: Yes  
Permitted: Yes  
Wet space: No  
Addition: No  
Conversion: No

## 12 Floor 2 - Living Room



Dimensions: 17'5" x 15'6"  
Area: 270 sq. ft  
Counted as living area: Yes

Heated: Yes  
Finished: Yes  
Enclosed: Yes  
Contiguous: Yes  
Permitted: Yes  
Wet space: No  
Addition: No  
Conversion: No

## 13 Floor 2 - Porch



Dimensions: 24'10" x 9'1"  
Area: 225 sq. ft  
Counted as living area: No

Heated: No  
Finished: No  
Enclosed: No  
Contiguous: Yes  
Permitted: Yes  
Wet space: No  
Addition: No  
Conversion: No

## 14 Floor 2 - Patio



Dimensions: 17'5" x 6'3"  
Area: 109 sq. ft  
Counted as living area: No

Heated: No  
Finished: No  
Enclosed: No  
Contiguous: Yes  
Permitted: Yes  
Wet space: No  
Addition: No  
Conversion: No

**15** Floor 2 - Deck

---



Dimensions: 3'10" x 5'6"  
Area: 21 sq. ft  
Counted as living area: No

Heated: No  
Finished: No  
Enclosed: No  
Contiguous: Yes  
Permitted: Yes  
Wet space: No  
Addition: No  
Conversion: No

**16** Floor 2 - Pantry

---



Dimensions: 4'0" x 3'11"  
Area: 16 sq. ft  
Counted as living area: Yes

Heated: Yes  
Finished: Yes  
Enclosed: Yes  
Contiguous: Yes  
Permitted: Yes  
Wet space: No  
Addition: No  
Conversion: No

**17** Floor 2 - Hall

---



Dimensions: 1'2" x 3'6"  
Area: 4 sq. ft  
Counted as living area: Yes

Heated: Yes  
Finished: Yes  
Enclosed: Yes  
Contiguous: Yes  
Permitted: Yes  
Wet space: No  
Addition: No  
Conversion: No

### 18 Floor 2 - Dining Area



Dimensions: 15'7" x 17'6"  
Area: 273 sq. ft  
Counted as living area: Yes

Heated: Yes  
Finished: Yes  
Enclosed: Yes  
Contiguous: Yes  
Permitted: Yes  
Wet space: No  
Addition: No  
Conversion: No

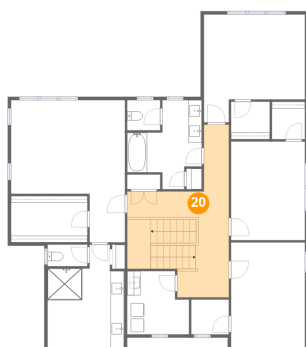
### 19 Floor 2 - Deck



Dimensions: 12'10" x 12'6"  
Area: 160 sq. ft  
Counted as living area: No

Heated: No  
Finished: No  
Enclosed: No  
Contiguous: Yes  
Permitted: Yes  
Wet space: No  
Addition: No  
Conversion: No

### 20 Floor 3 - Hall



Dimensions: 15'3" x 25'11"  
Area: 395 sq. ft  
Counted as living area: Yes

Heated: Yes  
Finished: Yes  
Enclosed: Yes  
Contiguous: Yes  
Permitted: Yes  
Wet space: No  
Addition: No  
Conversion: No

**21** Floor 3 - W.I.C.

---



Dimensions: 5'8" x 5'3"  
Area: 29 sq. ft  
Counted as living area: Yes

Heated: Yes  
Finished: Yes  
Enclosed: Yes  
Contiguous: Yes  
Permitted: Yes  
Wet space: No  
Addition: No  
Conversion: No

**22** Floor 3 - Laundry

---

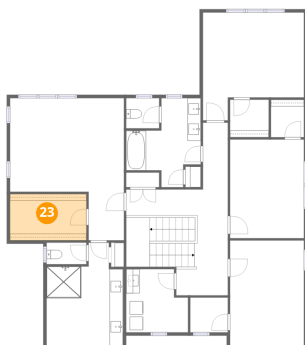


Dimensions: 9'3" x 9'6"  
Area: 88 sq. ft  
Counted as living area: Yes

Heated: Yes  
Finished: Yes  
Enclosed: Yes  
Contiguous: Yes  
Permitted: Yes  
Wet space: No  
Addition: No  
Conversion: No

**23** Floor 3 - W.I.C.

---



Dimensions: 11'5" x 6'11"  
Area: 80 sq. ft  
Counted as living area: Yes

Heated: Yes  
Finished: Yes  
Enclosed: Yes  
Contiguous: Yes  
Permitted: Yes  
Wet space: No  
Addition: No  
Conversion: No

**24** Floor 3 - Bedroom



Dimensions: 11'1" x 15'9"  
Area: 175 sq. ft  
Counted as living area: Yes

Heated: Yes  
Finished: Yes  
Enclosed: Yes  
Contiguous: Yes  
Permitted: Yes  
Wet space: No  
Addition: No  
Conversion: No

**25** Floor 3 - Bath



Dimensions: 11'2" x 13'4"  
Area: 149 sq. ft  
Counted as living area: Yes

Heated: Yes  
Finished: Yes  
Enclosed: Yes  
Contiguous: Yes  
Permitted: Yes  
Wet space: Yes  
Addition: No  
Conversion: No

**26** Floor 3 - W.I.C.



Dimensions: 5'10" x 5'8"  
Area: 33 sq. ft  
Counted as living area: Yes

Heated: Yes  
Finished: Yes  
Enclosed: Yes  
Contiguous: Yes  
Permitted: Yes  
Wet space: No  
Addition: No  
Conversion: No

**27** Floor 3 - W.I.C.

---



Dimensions: 4'11" x 5'8"  
Area: 28 sq. ft  
Counted as living area: Yes

Heated: Yes  
Finished: Yes  
Enclosed: Yes  
Contiguous: Yes  
Permitted: Yes  
Wet space: No  
Addition: No  
Conversion: No

**28** Floor 3 - Primary Bedroom

---



Dimensions: 17'1" x 21'4"  
Area: 364 sq. ft  
Counted as living area: Yes

Heated: Yes  
Finished: Yes  
Enclosed: Yes  
Contiguous: Yes  
Permitted: Yes  
Wet space: No  
Addition: No  
Conversion: No

**29** Floor 3 - Bath

---



Dimensions: 11'7" x 15'5"  
Area: 179 sq. ft  
Counted as living area: Yes

Heated: Yes  
Finished: Yes  
Enclosed: Yes  
Contiguous: Yes  
Permitted: Yes  
Wet space: Yes  
Addition: No  
Conversion: No

**30** Floor 3 - Bath



Dimensions: 6'0" x 3'3"  
Area: 19 sq. ft  
Counted as living area: Yes

Heated: Yes  
Finished: Yes  
Enclosed: Yes  
Contiguous: Yes  
Permitted: Yes  
Wet space: Yes  
Addition: No  
Conversion: No

**31** Floor 3 - Bedroom



Dimensions: 11'1" x 14'9"  
Area: 164 sq. ft  
Counted as living area: Yes

Heated: Yes  
Finished: Yes  
Enclosed: Yes  
Contiguous: Yes  
Permitted: Yes  
Wet space: No  
Addition: No  
Conversion: No

**32** Floor 3 - Bedroom



Dimensions: 15'2" x 16'2"  
Area: 245 sq. ft  
Counted as living area: Yes

Heated: Yes  
Finished: Yes  
Enclosed: Yes  
Contiguous: Yes  
Permitted: Yes  
Wet space: No  
Addition: No  
Conversion: No

**33** Floor 3 - Bath

---



**Dimensions:** 4'11" x 4'6"  
**Area:** 22 sq. ft  
**Counted as living area:** Yes

**Heated:** Yes  
**Finished:** Yes  
**Enclosed:** Yes  
**Contiguous:** Yes  
**Permitted:** Yes  
**Wet space:** Yes  
**Addition:** No  
**Conversion:** No