

Home data report

1841 Thistleleaf Crescent, Chapel Hill North, Orléans, Ontario, Canada, K1C 5W8



Total Area: 3163 sq. ft

Basement: 894 sq. ft, 1st Floor: 1129 sq. ft, 2nd Floor: 1140 sq. ft

Excluded: Utility 233 sq. ft, Garage 376 sq. ft, Fireplace 9 sq. ft, Walls: 250 sq. ft

Property summary



Home data report

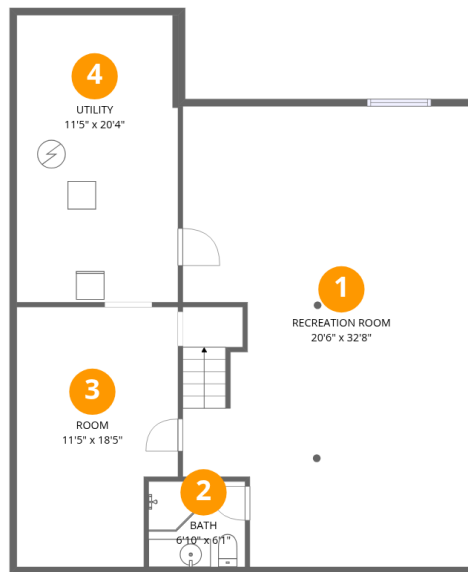
**1841 Thistleleaf Crescent, Chapel Hill North, Orléans, Ontario,
Canada, K1C 5W8**

 **1**
Half baths

 **1**
Garages

Home data report

1841 Thistleleaf Crescent, Chapel Hill North, Orléans, Ontario, Canada, K1C 5W8



Room dimensions

Floor 1 Below grade

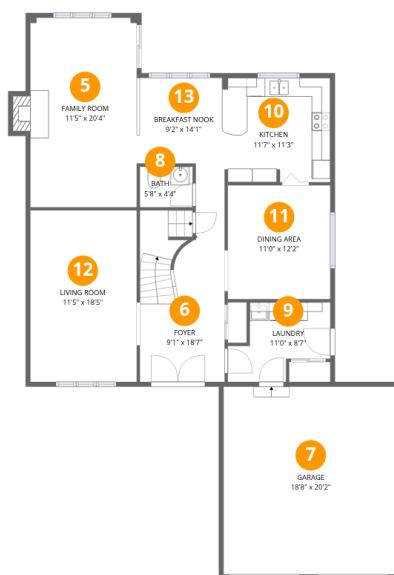
Total:894sqft

Excluded: 233sqft

#		Dimensions	sqft	Counted as living area
1	Recreation Room	20'6" x 32'8"	634 sq. ft	Yes
2	Bath	6'10" x 6'1"	42 sq. ft	Yes
3	Room	11'5" x 18'5"	195 sq. ft	Yes
4	Utility	11'5" x 20'4"	233 sq. ft	No

Home data report

1841 Thistleleaf Crescent, Chapel Hill North, Orléans, Ontario, Canada, K1C 5W8



Room dimensions

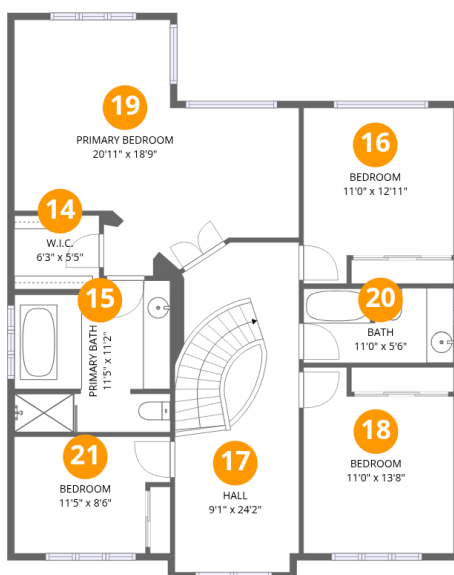
Floor 2

Total: 1129sqft Excluded: 385sqft

#		Dimensions	sqft	Counted as living area
5	Family Room	11'5" x 20'4"	240 sq. ft	Yes
6	Foyer	9'1" x 18'7"	165 sq. ft	Yes
7	Garage	18'8" x 20'2"	376 sq. ft	No
8	Bath	5'8" x 4'4"	25 sq. ft	Yes
9	Laundry	11'0" x 8'7"	71 sq. ft	Yes
10	Kitchen	11'7" x 11'3"	128 sq. ft	Yes
11	Dining Area	11'0" x 12'2"	135 sq. ft	Yes
12	Living Room	11'5" x 18'5"	211 sq. ft	Yes
13	Breakfast Nook	9'2" x 14'1"	99 sq. ft	Yes

Home data report

1841 Thistleleaf Crescent, Chapel Hill North, Orléans, Ontario, Canada, K1C 5W8



Room dimensions

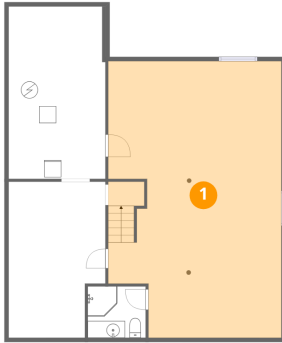
Floor 3

Total:1140sqft Excluded: 0sqft

#		Dimensions	sqft	Counted as living area
14	W.I.C.	6'3" x 5'5"	34 sq. ft	Yes
15	Primary Bath	11'5" x 11'2"	118 sq. ft	Yes
16	Bedroom	11'0" x 12'11"	126 sq. ft	Yes
17	Hall	9'1" x 24'2"	214 sq. ft	Yes
18	Bedroom	11'0" x 13'8"	134 sq. ft	Yes
19	Primary Bedroom	20'11" x 18'9"	278 sq. ft	Yes
20	Bath	11'0" x 5'6"	59 sq. ft	Yes
21	Bedroom	11'5" x 8'6"	88 sq. ft	Yes

1841 Thistleleaf Crescent, Chapel Hill North, Orléans, Ontario,
Canada, K1C 5W8

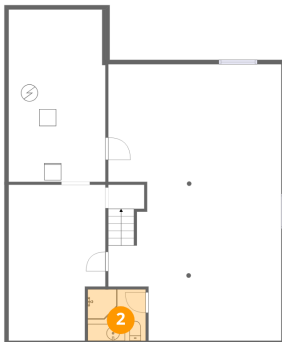
1 Floor 1 - Recreation Room



Dimensions: 20'6" x 32'8"
Area: 634 sq. ft
Counted as living area: Yes

Heated: Yes
Finished: Yes
Enclosed: Yes
Contiguous: Yes
Permitted: Yes
Wet space: No
Addition: No
Conversion: No

2 Floor 1 - Bath

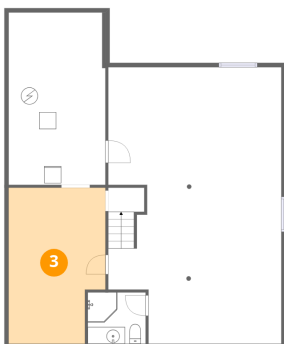


Dimensions: 6'10" x 6'1"
Area: 42 sq. ft
Counted as living area: Yes

Heated: Yes
Finished: Yes
Enclosed: Yes
Contiguous: Yes
Permitted: Yes
Wet space: Yes
Addition: No
Conversion: No

1841 Thistleleaf Crescent, Chapel Hill North, Orléans, Ontario, Canada, K1C 5W8

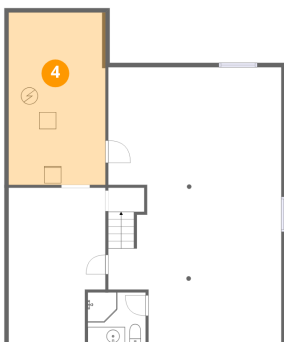
3 Floor 1 - Room



Dimensions: 11'5" x 18'5"
Area: 195 sq. ft
Counted as living area: Yes

Heated: Yes
Finished: Yes
Enclosed: Yes
Contiguous: Yes
Permitted: Yes
Wet space: No
Addition: No
Conversion: No

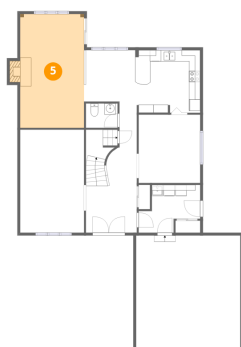
4 Floor 1 - Utility



Dimensions: 11'5" x 20'4"
Area: 233 sq. ft
Counted as living area: No

Heated: Yes
Finished: No
Enclosed: Yes
Contiguous: Yes
Permitted: Yes
Wet space: No
Addition: No
Conversion: No

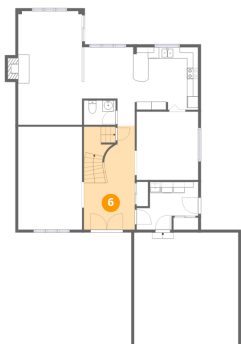
5 Floor 2 - Family Room



Dimensions: 11'5" x 20'4"
Area: 240 sq. ft
Counted as living area: Yes

Heated: Yes
Finished: Yes
Enclosed: Yes
Contiguous: Yes
Permitted: Yes
Wet space: No
Addition: No
Conversion: No

6 Floor 2 - Foyer



Dimensions: 9'1" x 18'7"
Area: 165 sq. ft
Counted as living area: Yes

Heated: Yes
Finished: Yes
Enclosed: Yes
Contiguous: Yes
Permitted: Yes
Wet space: No
Addition: No
Conversion: No

7 Floor 2 - Garage



Dimensions: 18'8" x 20'2"
Area: 376 sq. ft
Counted as living area: No

Heated: No
Finished: No
Enclosed: Yes
Contiguous: Yes
Permitted: Yes
Wet space: No
Addition: No
Conversion: No

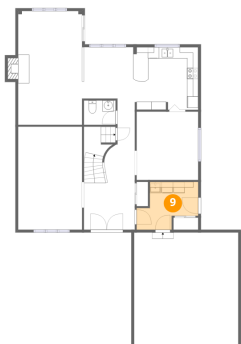
8 Floor 2 - Bath



Dimensions: 5'8" x 4'4"
Area: 25 sq. ft
Counted as living area: Yes

Heated: Yes
Finished: Yes
Enclosed: Yes
Contiguous: Yes
Permitted: Yes
Wet space: Yes
Addition: No
Conversion: No

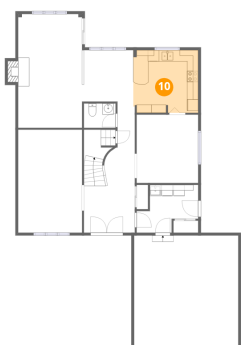
9 Floor 2 - Laundry



Dimensions: 11'0" x 8'7"
Area: 71 sq. ft
Counted as living area: Yes

Heated: Yes
Finished: Yes
Enclosed: Yes
Contiguous: Yes
Permitted: Yes
Wet space: No
Addition: No
Conversion: No

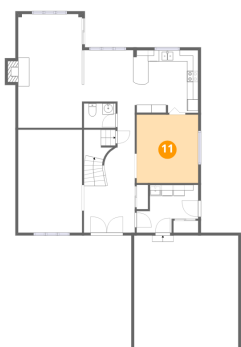
10 Floor 2 - Kitchen



Dimensions: 11'7" x 11'3"
Area: 128 sq. ft
Counted as living area: Yes

Heated: Yes
Finished: Yes
Enclosed: Yes
Contiguous: Yes
Permitted: Yes
Wet space: No
Addition: No
Conversion: No

11 Floor 2 - Dining Area

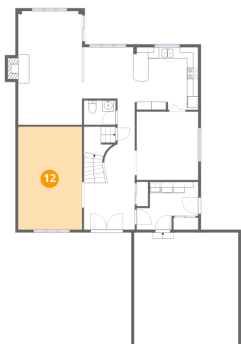


Dimensions: 11'0" x 12'2"
Area: 135 sq. ft
Counted as living area: Yes

Heated: Yes
Finished: Yes
Enclosed: Yes
Contiguous: Yes
Permitted: Yes
Wet space: No
Addition: No
Conversion: No

1841 Thistleleaf Crescent, Chapel Hill North, Orléans, Ontario, Canada, K1C 5W8

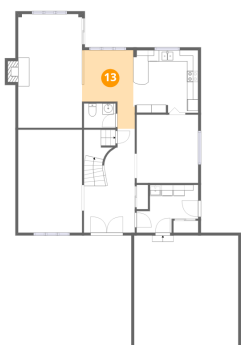
12 Floor 2 - Living Room



Dimensions: 11'5" x 18'5"
Area: 211 sq. ft
Counted as living area: Yes

Heated: Yes
Finished: Yes
Enclosed: Yes
Contiguous: Yes
Permitted: Yes
Wet space: No
Addition: No
Conversion: No

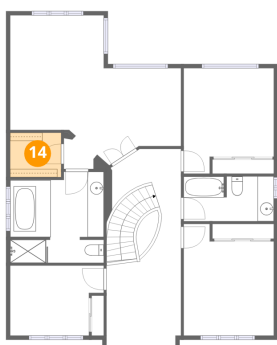
13 Floor 2 - Breakfast Nook



Dimensions: 9'2" x 14'1"
Area: 99 sq. ft
Counted as living area: Yes

Heated: Yes
Finished: Yes
Enclosed: Yes
Contiguous: Yes
Permitted: Yes
Wet space: No
Addition: No
Conversion: No

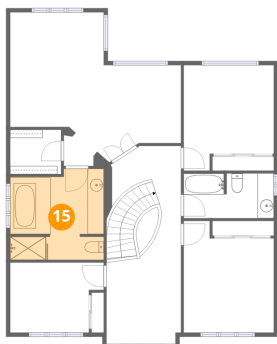
14 Floor 3 - W.I.C.



Dimensions: 6'3" x 5'5"
Area: 34 sq. ft
Counted as living area: Yes

Heated: Yes
Finished: Yes
Enclosed: Yes
Contiguous: Yes
Permitted: Yes
Wet space: No
Addition: No
Conversion: No

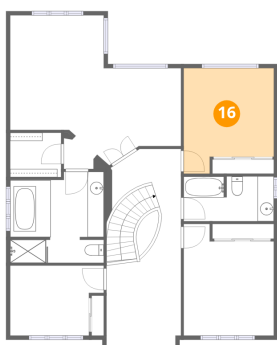
15 Floor 3 - Primary Bath



Dimensions: 11'5" x 11'2"
Area: 118 sq. ft
Counted as living area: Yes

Heated: Yes
Finished: Yes
Enclosed: Yes
Contiguous: Yes
Permitted: Yes
Wet space: Yes
Addition: No
Conversion: No

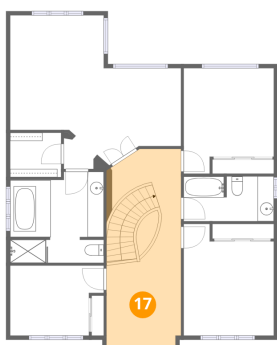
16 Floor 3 - Bedroom



Dimensions: 11'0" x 12'11"
Area: 126 sq. ft
Counted as living area: Yes

Heated: Yes
Finished: Yes
Enclosed: Yes
Contiguous: Yes
Permitted: Yes
Wet space: No
Addition: No
Conversion: No

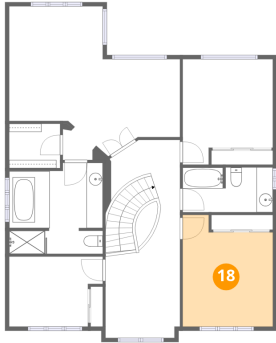
17 Floor 3 - Hall



Dimensions: 9'1" x 24'2"
Area: 214 sq. ft
Counted as living area: Yes

Heated: Yes
Finished: Yes
Enclosed: Yes
Contiguous: Yes
Permitted: Yes
Wet space: No
Addition: No
Conversion: No

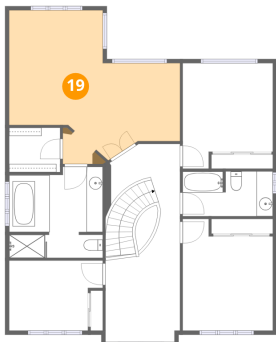
18 Floor 3 - Bedroom



Dimensions: 11'0" x 13'8"
Area: 134 sq. ft
Counted as living area: Yes

Heated: Yes
Finished: Yes
Enclosed: Yes
Contiguous: Yes
Permitted: Yes
Wet space: No
Addition: No
Conversion: No

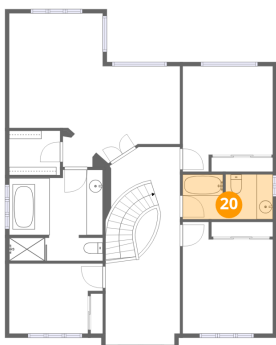
19 Floor 3 - Primary Bedroom



Dimensions: 20'11" x 18'9"
Area: 278 sq. ft
Counted as living area: Yes

Heated: Yes
Finished: Yes
Enclosed: Yes
Contiguous: Yes
Permitted: Yes
Wet space: No
Addition: No
Conversion: No

20 Floor 3 - Bath



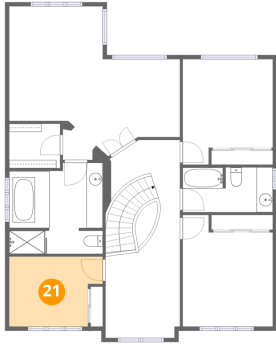
Dimensions: 11'0" x 5'6"
Area: 59 sq. ft
Counted as living area: Yes

Heated: Yes
Finished: Yes
Enclosed: Yes
Contiguous: Yes
Permitted: Yes
Wet space: Yes
Addition: No
Conversion: No

Home data report

1841 Thistleleaf Crescent, Chapel Hill North, Orléans, Ontario,
Canada, K1C 5W8

21 Floor 3 - Bedroom



Dimensions: 11'5" x 8'6"
Area: 88 sq. ft
Counted as living area: Yes

Heated: Yes
Finished: Yes
Enclosed: Yes
Contiguous: Yes
Permitted: Yes
Wet space: No
Addition: No
Conversion: No