

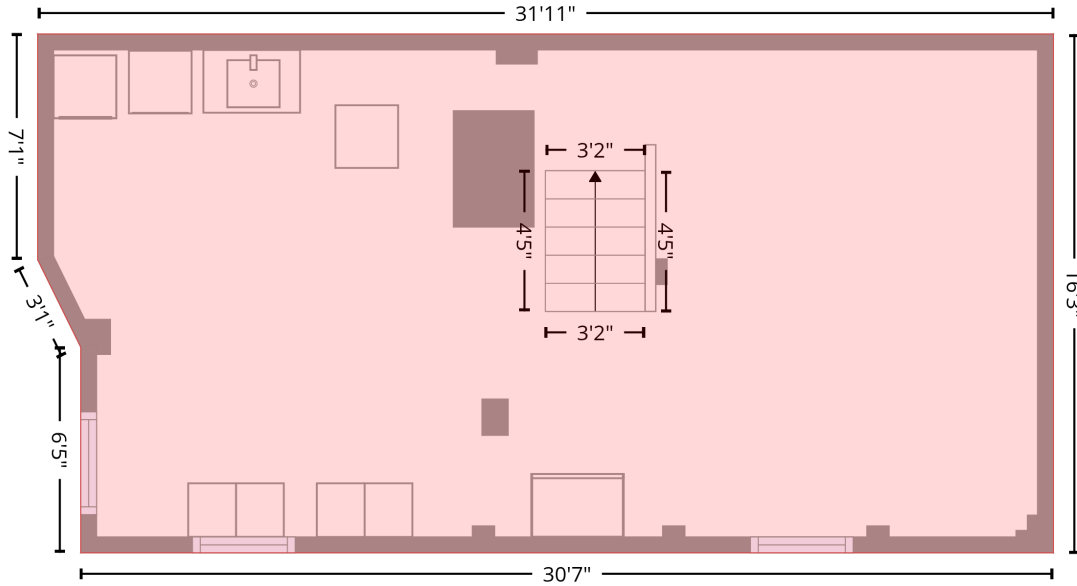
997 Queens Cir,Shelby,NC,US

Gross Living Area: 1754 sq. ft

Level 1 - Below Grade

Basement
[AREA: 0]

BASEMENT (1)
[AREA: 509]



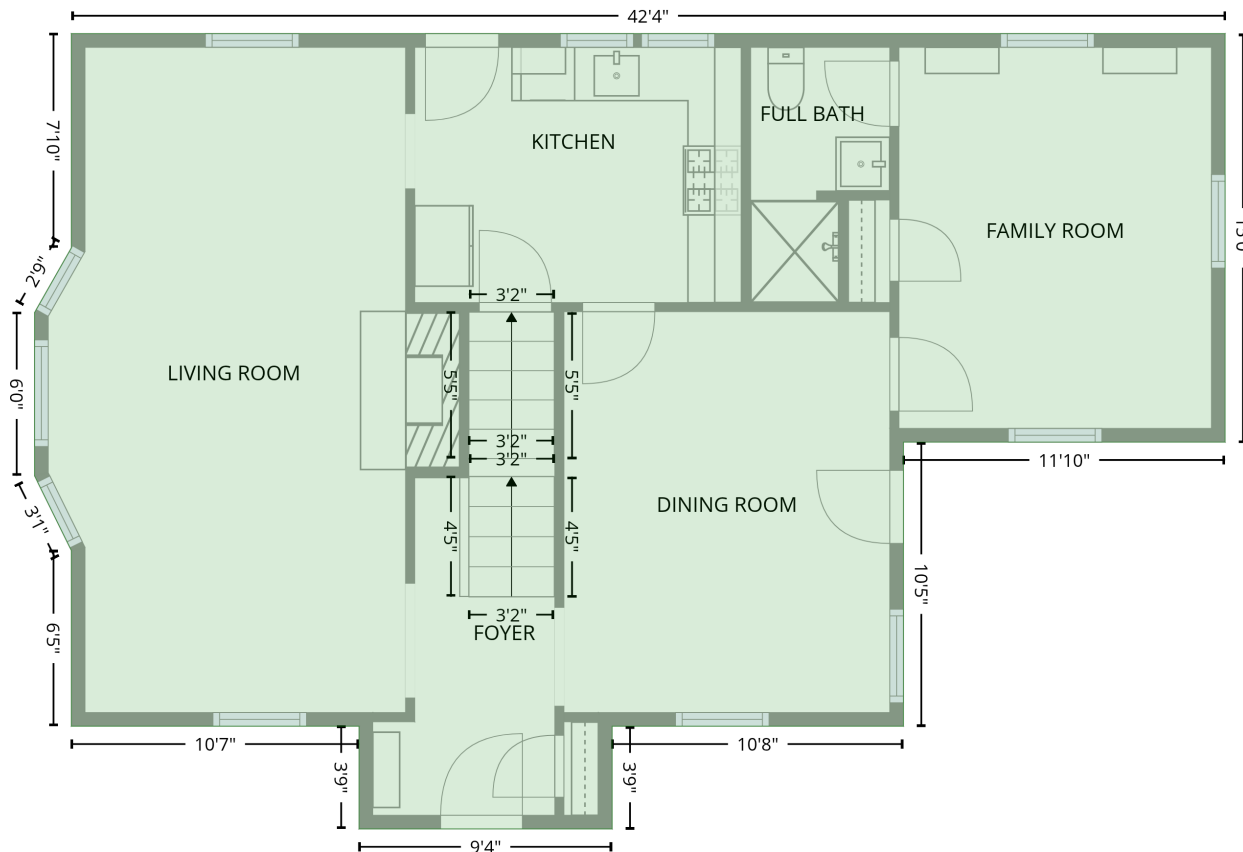
Space	Area (sq. ft)	Calculation <small>Coordinate Polygon Area Algorithm using inches</small>
BASEMENT (Non-living area)	509	$-\left((302.1 + 302.1) * (200.5 - 395.8) + (302.1 + -64.4) * (395.8 - 395.8) + (-64.4 + -64.4) * (395.8 - 318.4) + (-64.4 + -80.6) * (318.4 - 285.5) + (-80.6 + -80.6) * (285.5 - 200.5) + (-80.6 + 302.1) * (200.5 - 200.5)\right) * 0.5 * 0.00694$

997 Queens Cir,Shelby,NC,US

Gross Living Area: 1754 sq. ft

Level 2

1st floor
[AREA: 1001]



Space	Area (sq. ft)	Calculation <small>Coordinate Polygon Area Algorithm using inches</small>
1st floor (Living area)	1001	$ \begin{aligned} & -((451 + 451) * (96.1 - 276.2) + (451 + 309.3) * (276.2 - 276.2) + (309.3 + 309.3) * (276.2 - 401.4) \\ & + (309.3 + 180.9) * (401.4 - 401.4) + (180.9 + 180.9) * (401.4 - 446.6) + (180.9 + 69.4) * (446.6 - \\ & 446.6) + (69.4 + 69.4) * (446.6 - 401.4) + (69.4 + -57.4) * (401.4 - 401.4) + (-57.4 + -57.4) * (401.4 \\ & - 323.9) + (-57.4 + -73.6) * (323.9 - 291) + (-73.6 + -73.6) * (291 - 219.1) + (-73.6 + -57.4) * (219.1 \\ & - 190.6) + (-57.4 + -57.4) * (190.6 - 96.1) + (-57.4 + 451) * (96.1 - 96.1)) * 0.5 * 0.00694 \end{aligned} $

