

Basement
58'10" x 39'2"



Total: 4131 sq. ft
Basement: 0 sq. Ft, 1st Floor: 1803 sq. Ft, 2nd Floor: 2328 sq. ft
Excluded Areas: Basement: 1760 sq. Ft, Screened Porch: 204 sq. Ft, Porch: 98 sq. Ft,
Deck: 266 sq. Ft, Patio: 331 sq. Ft, Garage: 567 sq. Ft,
Walls: 351 sq. ft





Total: 4131 sq. ft

Basement: 0 sq. Ft, 1st Floor: 1803 sq. Ft, 2nd Floor: 2328 sq. ft

Excluded Areas: Basement: 1760 sq. Ft, Screened Porch: 204 sq. Ft, Porch: 98 sq. Ft,

Deck: 266 sq. Ft, Patio: 331 sq. Ft, Garage: 567 sq. Ft,

Walls: 351 sq. ft





Total: 4131 sq. ft

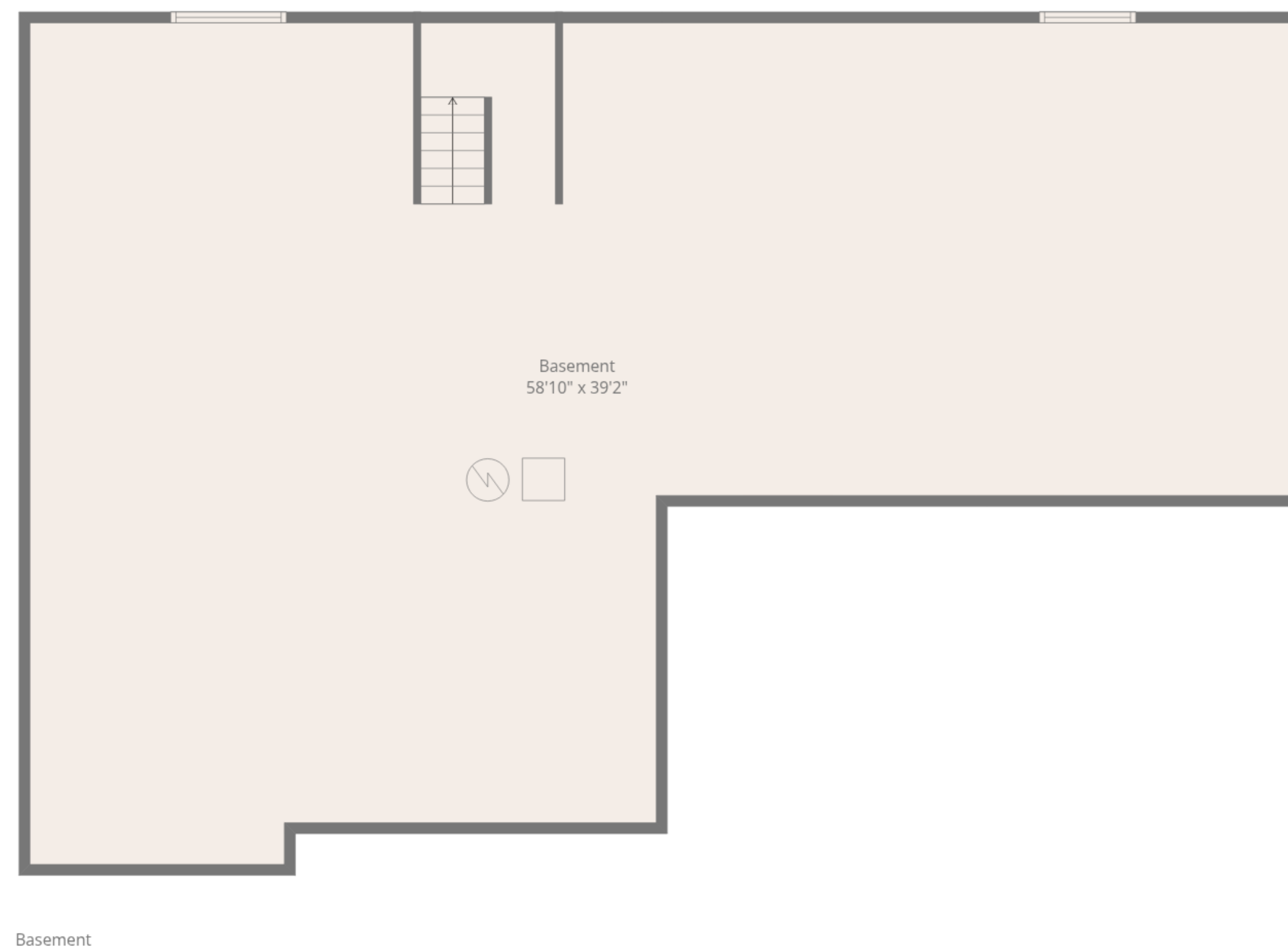
Basement: 0 sq. Ft, 1st Floor: 1803 sq. Ft, 2nd Floor: 2328 sq. ft

Excluded Areas: Basement: 1760 sq. Ft, Screened Porch: 204 sq. Ft, Porch: 98 sq. Ft,

Deck: 266 sq. Ft, Patio: 331 sq. Ft, Garage: 567 sq. Ft,

Walls: 351 sq. ft





Total: 4131 sq. ft
 Basement: 0 sq. Ft, 1st Floor: 1803 sq. Ft, 2nd Floor: 2328 sq. ft
 Excluded Areas: Basement: 1760 sq. Ft, Screened Porch: 204 sq. Ft, Porch: 98 sq. Ft,
 Deck: 266 sq. Ft, Patio: 331 sq. Ft, Garage: 567 sq. Ft,
 Walls: 351 sq. ft

