



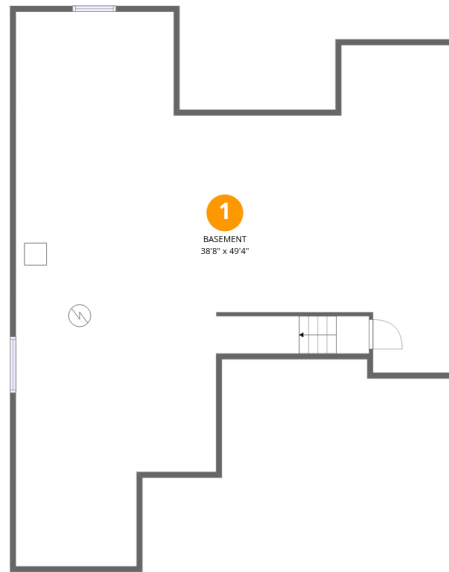
Total Area: 1366 sq. ft

Basement: 0 sq. ft, 1st Floor: 1366 sq. ft

Excluded: Basement 1300 sq. ft, Garage 335 sq. ft, Patio 141 sq. ft, Porch 155 sq. ft, Walls: 218 sq. ft

Property summary





Room dimensions

Floor 1 Below grade

Total:0sqft

Excluded: 1300sqft

#		Dimensions	sqft	Counted as living area
1	Basement	38'8" x 49'4"	1294 sq. ft	No



Room dimensions

Floor 2

Total:1366sqft

Excluded: 631sqft

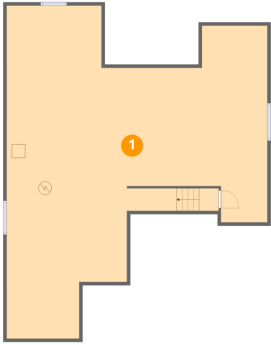
#		Dimensions	sqft	Counted as living area
2	Living Room	14'2" x 21'6"	292 sq. ft	Yes
3	Bedroom	12'0" x 9'11"	119 sq. ft	Yes
4	Bedroom	12'0" x 9'10"	119 sq. ft	Yes
5	Hall	3'3" x 7'2"	23 sq. ft	Yes
6	Patio	13'11" x 10'1"	141 sq. ft	No
7	Hall	3'7" x 9'1"	32 sq. ft	Yes
8	Garage	18'11" x 18'5"	335 sq. ft	No
9	Bath	8'6" x 4'11"	42 sq. ft	Yes
10	Foyer	6'11" x 11'2"	69 sq. ft	Yes
11	Bath	4'11" x 10'10"	53 sq. ft	Yes
12	Kitchen	10'2" x 17'1"	141 sq. ft	Yes

Home data report

2366 Blissful Ln,Windsor,CO,US

#		Dimensions	sqft	Counted as living area
13	Primary Bedroom	14'1" x 15'4"	191 sq. ft	Yes
14	Dining Area	10'2" x 10'4"	102 sq. ft	Yes
15	Laundry	6'11" x 5'1"	35 sq. ft	Yes
16	W.I.C.	4'11" x 10'10"	53 sq. ft	Yes
17	Porch	19'5" x 15'6"	155 sq. ft	No

1 Floor 1 - Basement



Dimensions: 38'8" x 49'4"
Area: 1294 sq. ft
Counted as living area: No

Heated: Yes
Finished: No
Enclosed: Yes
Contiguous: Yes
Permitted: Yes
Wet space: No
Addition: No
Conversion: No

2 Floor 2 - Living Room



Dimensions: 14'2" x 21'6"
Area: 292 sq. ft
Counted as living area: Yes

Heated: Yes
Finished: Yes
Enclosed: Yes
Contiguous: Yes
Permitted: Yes
Wet space: No
Addition: No
Conversion: No

3 Floor 2 - Bedroom



Dimensions: 12'0" x 9'11"
Area: 119 sq. ft
Counted as living area: Yes

Heated: Yes
Finished: Yes
Enclosed: Yes
Contiguous: Yes
Permitted: Yes
Wet space: No
Addition: No
Conversion: No

4 Floor 2 - Bedroom



Dimensions: 12'0" x 9'10"
Area: 119 sq. ft
Counted as living area: Yes

Heated: Yes
Finished: Yes
Enclosed: Yes
Contiguous: Yes
Permitted: Yes
Wet space: No
Addition: No
Conversion: No

5 Floor 2 - Hall



Dimensions: 3'3" x 7'2"
Area: 23 sq. ft
Counted as living area: Yes

Heated: Yes
Finished: Yes
Enclosed: Yes
Contiguous: Yes
Permitted: Yes
Wet space: No
Addition: No
Conversion: No

6 Floor 2 - Patio



Dimensions: 13'11" x 10'1"
Area: 141 sq. ft
Counted as living area: No

Heated: No
Finished: No
Enclosed: No
Contiguous: Yes
Permitted: Yes
Wet space: No
Addition: No
Conversion: No

7 Floor 2 - Hall



Dimensions: 3'7" x 9'1"
Area: 32 sq. ft
Counted as living area: Yes

Heated: Yes
Finished: Yes
Enclosed: Yes
Contiguous: Yes
Permitted: Yes
Wet space: No
Addition: No
Conversion: No

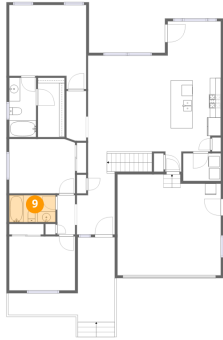
8 Floor 2 - Garage



Dimensions: 18'11" x 18'5"
Area: 335 sq. ft
Counted as living area: No

Heated: No
Finished: No
Enclosed: Yes
Contiguous: Yes
Permitted: Yes
Wet space: No
Addition: No
Conversion: No

9 Floor 2 - Bath



Dimensions: 8'6" x 4'11"
Area: 42 sq. ft
Counted as living area: Yes

Heated: Yes
Finished: Yes
Enclosed: Yes
Contiguous: Yes
Permitted: Yes
Wet space: Yes
Addition: No
Conversion: No

10 Floor 2 - Foyer



Dimensions: 6'11" x 11'2"
Area: 69 sq. ft
Counted as living area: Yes

Heated: Yes
Finished: Yes
Enclosed: Yes
Contiguous: Yes
Permitted: Yes
Wet space: No
Addition: No
Conversion: No

11 Floor 2 - Bath



Dimensions: 4'11" x 10'10"
Area: 53 sq. ft
Counted as living area: Yes

Heated: Yes
Finished: Yes
Enclosed: Yes
Contiguous: Yes
Permitted: Yes
Wet space: Yes
Addition: No
Conversion: No

12 Floor 2 - Kitchen



Dimensions: 10'2" x 17'1"
Area: 141 sq. ft
Counted as living area: Yes

Heated: Yes
Finished: Yes
Enclosed: Yes
Contiguous: Yes
Permitted: Yes
Wet space: No
Addition: No
Conversion: No

13 Floor 2 - Primary Bedroom



Dimensions: 14'1" x 15'4"
Area: 191 sq. ft
Counted as living area: Yes

Heated: Yes
Finished: Yes
Enclosed: Yes
Contiguous: Yes
Permitted: Yes
Wet space: No
Addition: No
Conversion: No

14 Floor 2 - Dining Area



Dimensions: 10'2" x 10'4"
Area: 102 sq. ft
Counted as living area: Yes

Heated: Yes
Finished: Yes
Enclosed: Yes
Contiguous: Yes
Permitted: Yes
Wet space: No
Addition: No
Conversion: No

15 Floor 2 - Laundry



Dimensions: 6'11" x 5'1"
Area: 35 sq. ft
Counted as living area: Yes

Heated: Yes
Finished: Yes
Enclosed: Yes
Contiguous: Yes
Permitted: Yes
Wet space: No
Addition: No
Conversion: No

16 Floor 2 - W.I.C.



Dimensions: 4'11" x 10'10"
Area: 53 sq. ft
Counted as living area: Yes

Heated: Yes
Finished: Yes
Enclosed: Yes
Contiguous: Yes
Permitted: Yes
Wet space: No
Addition: No
Conversion: No

17 Floor 2 - Porch



Dimensions: 19'5" x 15'6"
Area: 155 sq. ft
Counted as living area: No

Heated: No
Finished: No
Enclosed: No
Contiguous: Yes
Permitted: Yes
Wet space: No
Addition: No
Conversion: No