

Home data report

20899 Pleasant Valley Dr, Sturgis, SD, US



Total Area: 1632 sq. ft

Basement: 0 sq. ft, 1st Floor: 1310 sq. ft, 2nd Floor: 322 sq. ft

Excluded: Bedroom 350 sq. ft, Garage 320 sq. ft, Bath 27 sq. ft, Bath 34 sq. ft, Basement 301 sq. ft, Screened porch 126 sq. ft, Open to below 210 sq. ft, Walls: 239 sq. ft

Property summary

 **3** Floors

 **5** Bedrooms

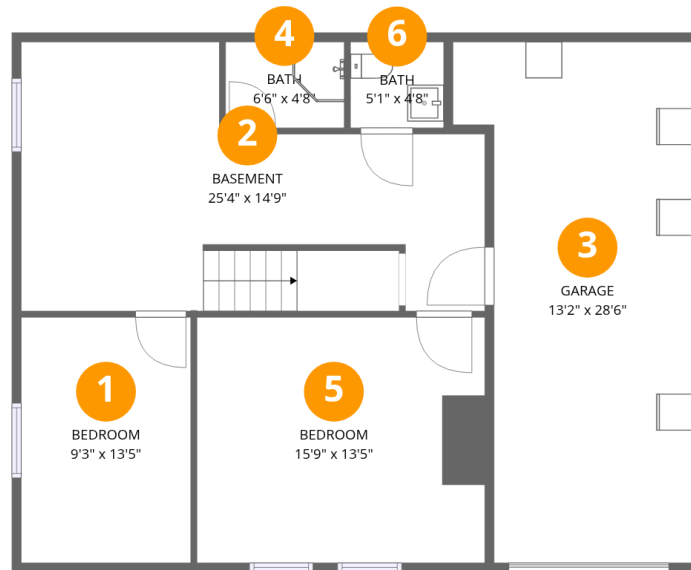
 **1** Bathrooms

Home data report

20899 Pleasant Valley Dr, Sturgis, SD, US

 **1**
Half baths

 **1**
Garages



Room dimensions

Floor 1 Below grade

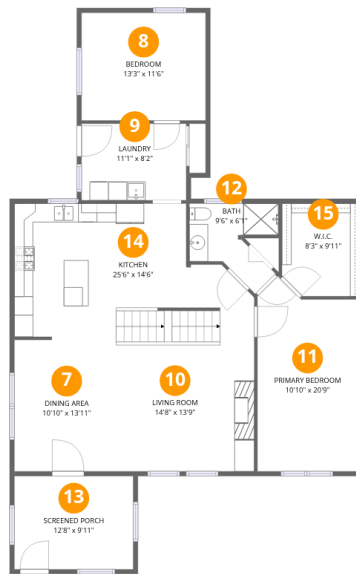
Total: 0sqft

Excluded: 1032sqft

#		Dimensions	sqft	Counted as living area
1	Bedroom	9'3" x 13'5"	125 sq. ft	No
2	Basement	25'4" x 14'9"	373 sq. ft	No
3	Garage	13'2" x 28'6"	374 sq. ft	No
4	Bath	6'6" x 4'8"	31 sq. ft	No
5	Bedroom	15'9" x 13'5"	212 sq. ft	No
6	Bath	5'1" x 4'8"	24 sq. ft	No

Home data report

20899 Pleasant Valley Dr, Sturgis, SD, US

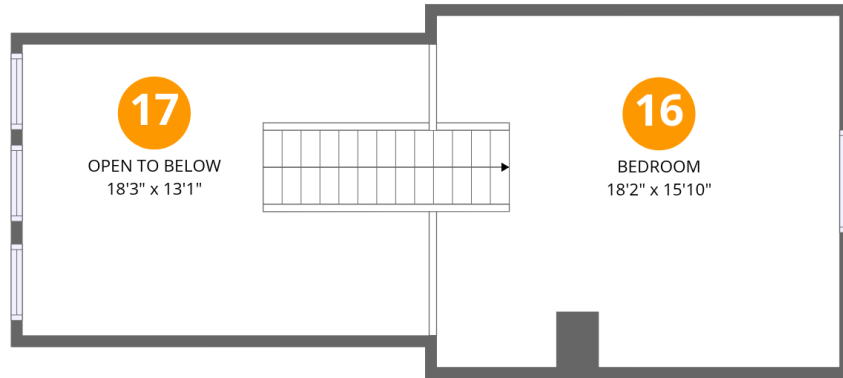


Room dimensions

Floor 2

Total: 1310sqft Excluded: 126sqft

#		Dimensions	sqft	Counted as living area
7	Dining Area	10'10" x 13'11"	151 sq. ft	Yes
8	Bedroom	13'3" x 11'6"	152 sq. ft	Yes
9	Laundry	11'1" x 8'2"	91 sq. ft	Yes
10	Living Room	14'8" x 13'9"	202 sq. ft	Yes
11	Primary Bedroom	10'10" x 20'9"	225 sq. ft	Yes
12	Bath	9'6" x 6'1"	58 sq. ft	Yes
13	Screened Porch	12'8" x 9'11"	125 sq. ft	No
14	Kitchen	25'6" x 14'6"	370 sq. ft	Yes
15	W.I.C.	8'3" x 9'11"	81 sq. ft	Yes



Room dimensions

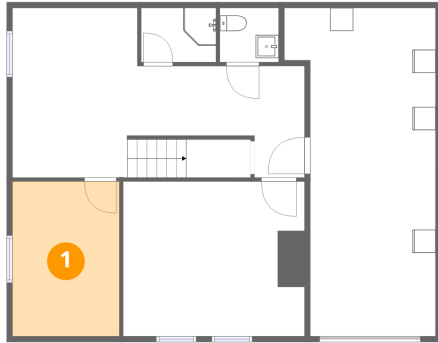
Floor 3

Total: 322 sqft

Excluded: 210 sqft

#		Dimensions	sqft	Counted as living area
16	Bedroom	18'2" x 15'10"	287 sq. ft	Yes
17	Open To Below	18'3" x 13'1"	239 sq. ft	No

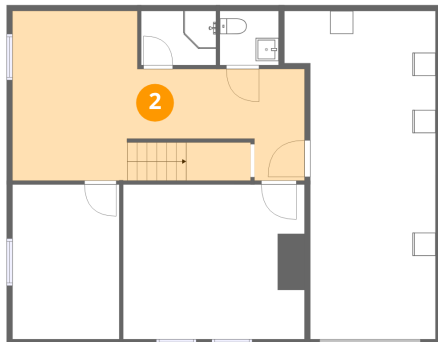
1 Floor 1 - Bedroom



Dimensions: 9'3" x 13'5"
Area: 125 sq. ft
Counted as living area: No

Heated: Yes
Finished: No
Enclosed: Yes
Contiguous: Yes
Permitted: Yes
Wet space: No
Addition: No
Conversion: No

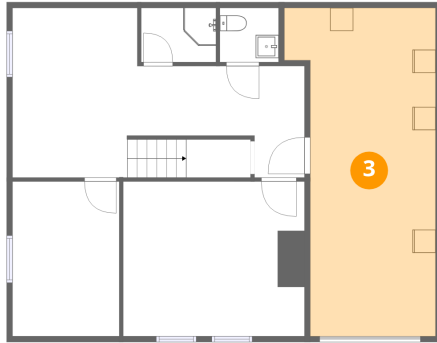
2 Floor 1 - Basement



Dimensions: 25'4" x 14'9"
Area: 373 sq. ft
Counted as living area: No

Heated: Yes
Finished: No
Enclosed: Yes
Contiguous: Yes
Permitted: Yes
Wet space: No
Addition: No
Conversion: No

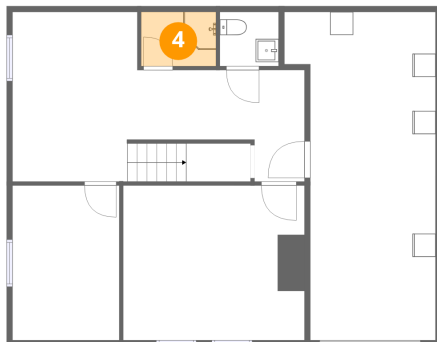
3 Floor 1 - Garage



Dimensions: 13'2" x 28'6"
Area: 374 sq. ft
Counted as living area: No

Heated: No
Finished: No
Enclosed: Yes
Contiguous: Yes
Permitted: Yes
Wet space: No
Addition: No
Conversion: No

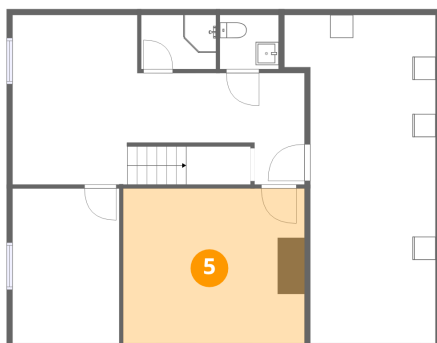
4 Floor 1 - Bath



Dimensions: 6'6" x 4'8"
Area: 31 sq. ft
Counted as living area: No

Heated: Yes
Finished: No
Enclosed: Yes
Contiguous: Yes
Permitted: Yes
Wet space: Yes
Addition: No
Conversion: No

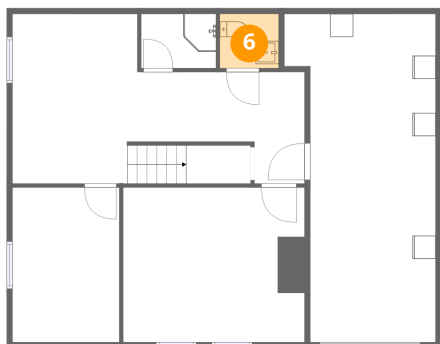
5 Floor 1 - Bedroom



Dimensions: 15'9" x 13'5"
Area: 212 sq. ft
Counted as living area: No

Heated: Yes
Finished: No
Enclosed: Yes
Contiguous: Yes
Permitted: Yes
Wet space: No
Addition: No
Conversion: No

6 Floor 1 - Bath



Dimensions: 5'1" x 4'8"
Area: 24 sq. ft
Counted as living area: No

Heated: Yes
Finished: No
Enclosed: Yes
Contiguous: Yes
Permitted: Yes
Wet space: Yes
Addition: No
Conversion: No

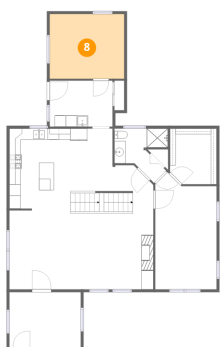
7 Floor 2 - Dining Area



Dimensions: 10'10" x 13'11"
Area: 151 sq. ft
Counted as living area: Yes

Heated: Yes
Finished: Yes
Enclosed: Yes
Contiguous: Yes
Permitted: Yes
Wet space: No
Addition: No
Conversion: No

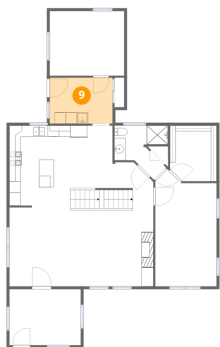
8 Floor 2 - Bedroom



Dimensions: 13'3" x 11'6"
Area: 152 sq. ft
Counted as living area: Yes

Heated: Yes
Finished: Yes
Enclosed: Yes
Contiguous: Yes
Permitted: Yes
Wet space: No
Addition: No
Conversion: No

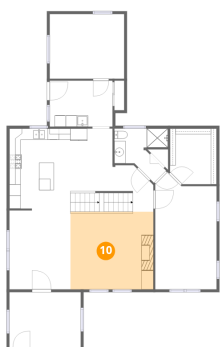
9 Floor 2 - Laundry



Dimensions: 11'1" x 8'2"
Area: 91 sq. ft
Counted as living area: Yes

Heated: Yes
Finished: Yes
Enclosed: Yes
Contiguous: Yes
Permitted: Yes
Wet space: No
Addition: No
Conversion: No

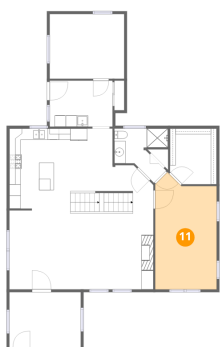
10 Floor 2 - Living Room



Dimensions: 14'8" x 13'9"
Area: 202 sq. ft
Counted as living area: Yes

Heated: Yes
Finished: Yes
Enclosed: Yes
Contiguous: Yes
Permitted: Yes
Wet space: No
Addition: No
Conversion: No

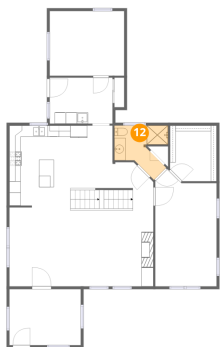
11 Floor 2 - Primary Bedroom



Dimensions: 10'10" x 20'9"
Area: 225 sq. ft
Counted as living area: Yes

Heated: Yes
Finished: Yes
Enclosed: Yes
Contiguous: Yes
Permitted: Yes
Wet space: No
Addition: No
Conversion: No

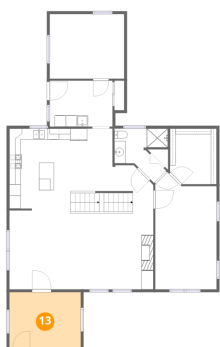
12 Floor 2 - Bath



Dimensions: 9'6" x 6'1"
Area: 58 sq. ft
Counted as living area: Yes

Heated: Yes
Finished: Yes
Enclosed: Yes
Contiguous: Yes
Permitted: Yes
Wet space: Yes
Addition: No
Conversion: No

13 Floor 2 - Screened Porch



Dimensions: 12'8" x 9'11"
Area: 125 sq. ft
Counted as living area: No

Heated: No
Finished: No
Enclosed: No
Contiguous: Yes
Permitted: Yes
Wet space: No
Addition: No
Conversion: No

14 Floor 2 - Kitchen



Dimensions: 25'6" x 14'6"
Area: 370 sq. ft
Counted as living area: Yes

Heated: Yes
Finished: Yes
Enclosed: Yes
Contiguous: Yes
Permitted: Yes
Wet space: No
Addition: No
Conversion: No

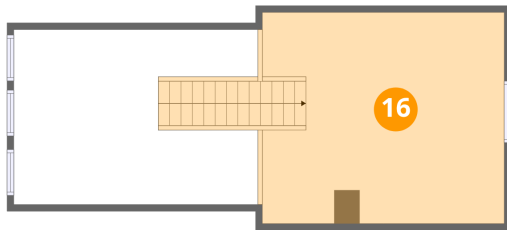
15 Floor 2 - W.I.C.



Dimensions: 8'3" x 9'11"
Area: 81 sq. ft
Counted as living area: Yes

Heated: Yes
Finished: Yes
Enclosed: Yes
Contiguous: Yes
Permitted: Yes
Wet space: No
Addition: No
Conversion: No

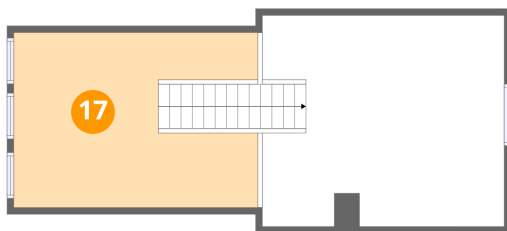
16 Floor 3 - Bedroom



Dimensions: 18'2" x 15'10"
Area: 287 sq. ft
Counted as living area: Yes

Heated: Yes
Finished: Yes
Enclosed: Yes
Contiguous: Yes
Permitted: Yes
Wet space: No
Addition: No
Conversion: No

17 Floor 3 - Open To Below



Dimensions: 18'3" x 13'1"
Area: 239 sq. ft
Counted as living area: No

Heated: No
Finished: No
Enclosed: No
Contiguous: Yes
Permitted: No
Wet space: No
Addition: No
Conversion: No