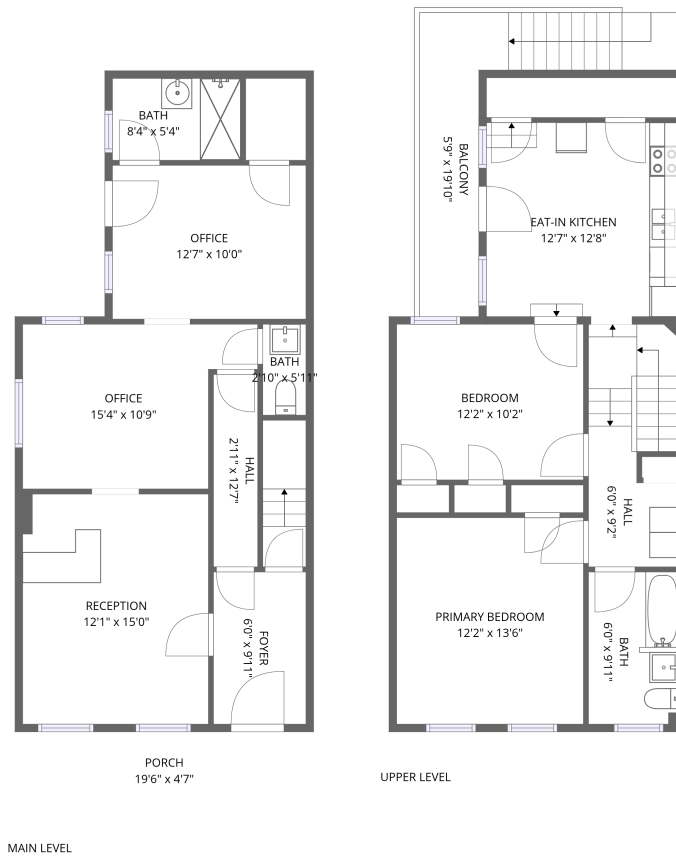


Home data report

827 Chestnut Street, Lebanon, Lebanon County, Pennsylvania,
United States, 17042




Total Area: 1371 sq. ft

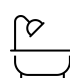
1st Floor: 685 sq. ft, 2nd Floor: 686 sq. ft


Excluded: Porch 89 sq. ft, Balcony 126 sq. ft, Walls: 113 sq. ft

Property summary

 **2** Floors

 **2** Bedrooms

 **1** Bathrooms

 **2** Half baths

Home data report

827 Chestnut Street, Lebanon, Lebanon County, Pennsylvania, United States, 17042



Room dimensions

Floor 1

Total:685sqft Excluded: 89sqft

#		Dimensions	sqft	Counted as living area
1	Office	15'4" x 10'9"	140 sq. ft	Yes
2	Hall	2'11" x 12'7"	36 sq. ft	Yes
3	Porch	19'6" x 4'7"	89 sq. ft	No
4	Bath	8'4" x 5'4"	45 sq. ft	Yes
5	Foyer	6'0" x 9'11"	60 sq. ft	Yes
6	Office	12'7" x 10'0"	127 sq. ft	Yes
7	Bath	2'10" x 5'11"	17 sq. ft	Yes
8	Reception	12'1" x 15'0"	182 sq. ft	Yes

Home data report

827 Chestnut Street, Lebanon, Lebanon County, Pennsylvania, United States, 17042



Room dimensions

Floor 2

Total:686sqft

Excluded: 126sqft

#		Dimensions	sqft	Counted as living area
9	Hall	6'0" x 9'2"	89 sq. ft	Yes
10	Bath	6'0" x 9'11"	59 sq. ft	Yes
11	Eat-in Kitchen	12'7" x 12'8"	160 sq. ft	Yes
12	Bedroom	12'2" x 10'2"	124 sq. ft	Yes
13	Primary Bedroom	12'2" x 13'6"	164 sq. ft	Yes
14	Balcony	5'9" x 19'10"	126 sq. ft	No

827 Chestnut Street, Lebanon, Lebanon County, Pennsylvania,
United States, 17042

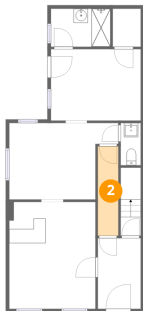
1 Floor 1 - Office



Dimensions: 15'4" x 10'9"
Area: 140 sq. ft
Counted as living area: Yes

Heated: Yes
Finished: Yes
Enclosed: Yes
Contiguous: Yes
Permitted: Yes
Wet space: No
Addition: No
Conversion: No

2 Floor 1 - Hall



Dimensions: 2'11" x 12'7"
Area: 36 sq. ft
Counted as living area: Yes

Heated: Yes
Finished: Yes
Enclosed: Yes
Contiguous: Yes
Permitted: Yes
Wet space: No
Addition: No
Conversion: No

827 Chestnut Street, Lebanon, Lebanon County, Pennsylvania,
United States, 17042

3 Floor 1 - Porch



Dimensions: 19'6" x 4'7"
Area: 89 sq. ft
Counted as living area: No

Heated: No
Finished: No
Enclosed: No
Contiguous: Yes
Permitted: Yes
Wet space: No
Addition: No
Conversion: No

4 Floor 1 - Bath



Dimensions: 8'4" x 5'4"
Area: 45 sq. ft
Counted as living area: Yes

Heated: Yes
Finished: Yes
Enclosed: Yes
Contiguous: Yes
Permitted: Yes
Wet space: Yes
Addition: No
Conversion: No

5 Floor 1 - Foyer



Dimensions: 6'0" x 9'11"
Area: 60 sq. ft
Counted as living area: Yes

Heated: Yes
Finished: Yes
Enclosed: Yes
Contiguous: Yes
Permitted: Yes
Wet space: No
Addition: No
Conversion: No

827 Chestnut Street, Lebanon, Lebanon County, Pennsylvania,
United States, 17042

6 Floor 1 - Office



Dimensions: 12'7" x 10'0"
Area: 127 sq. ft
Counted as living area: Yes

Heated: Yes
Finished: Yes
Enclosed: Yes
Contiguous: Yes
Permitted: Yes
Wet space: No
Addition: No
Conversion: No

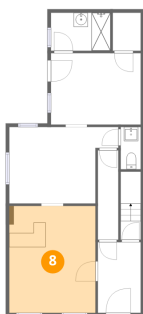
7 Floor 1 - Bath



Dimensions: 2'10" x 5'11"
Area: 17 sq. ft
Counted as living area: Yes

Heated: Yes
Finished: Yes
Enclosed: Yes
Contiguous: Yes
Permitted: Yes
Wet space: Yes
Addition: No
Conversion: No

8 Floor 1 - Reception



Dimensions: 12'1" x 15'0"
Area: 182 sq. ft
Counted as living area: Yes

Heated: Yes
Finished: Yes
Enclosed: Yes
Contiguous: Yes
Permitted: Yes
Wet space: No
Addition: No
Conversion: No

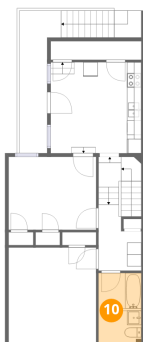
9 Floor 2 - Hall



Dimensions: 6'0" x 9'2"
Area: 89 sq. ft
Counted as living area: Yes

Heated: Yes
Finished: Yes
Enclosed: Yes
Contiguous: Yes
Permitted: Yes
Wet space: No
Addition: No
Conversion: No

10 Floor 2 - Bath



Dimensions: 6'0" x 9'11"
Area: 59 sq. ft
Counted as living area: Yes

Heated: Yes
Finished: Yes
Enclosed: Yes
Contiguous: Yes
Permitted: Yes
Wet space: Yes
Addition: No
Conversion: No

11 Floor 2 - Eat-in Kitchen



Dimensions: 12'7" x 12'8"
Area: 160 sq. ft
Counted as living area: Yes

Heated: Yes
Finished: Yes
Enclosed: Yes
Contiguous: Yes
Permitted: Yes
Wet space: No
Addition: No
Conversion: No

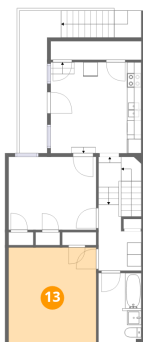
12 Floor 2 - Bedroom



Dimensions: 12'2" x 10'2"
Area: 124 sq. ft
Counted as living area: Yes

Heated: Yes
Finished: Yes
Enclosed: Yes
Contiguous: Yes
Permitted: Yes
Wet space: No
Addition: No
Conversion: No

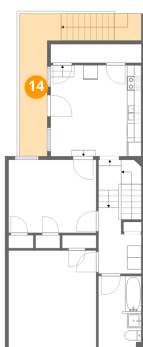
13 Floor 2 - Primary Bedroom



Dimensions: 12'2" x 13'6"
Area: 164 sq. ft
Counted as living area: Yes

Heated: Yes
Finished: Yes
Enclosed: Yes
Contiguous: Yes
Permitted: Yes
Wet space: No
Addition: No
Conversion: No

14 Floor 2 - Balcony



Dimensions: 5'9" x 19'10"
Area: 126 sq. ft
Counted as living area: No

Heated: No
Finished: No
Enclosed: No
Contiguous: Yes
Permitted: Yes
Wet space: No
Addition: No
Conversion: No