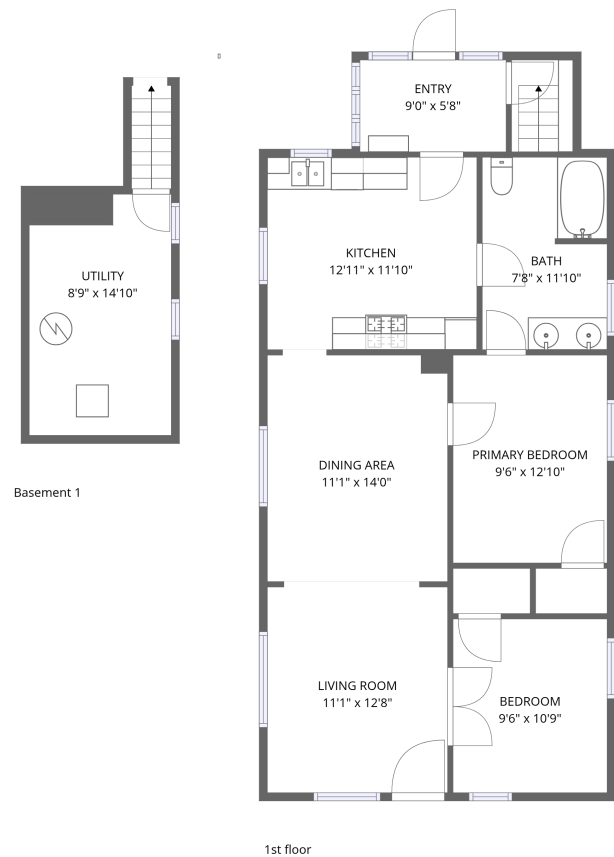


Home data report

806 East Myrtle Street, Eastside Park, Fort Collins, Larimer County, Colorado, United States, 80524




Total Area: 889 sq. ft

Below Ground: 10 sq. ft, 1st Floor: 879 sq. ft

Excluded: Utility 121 sq. ft, Undefined 38 sq. ft, Walls: 98 sq. ft

Property summary

 2 Floors

 2 Bedrooms

 1 Bathrooms

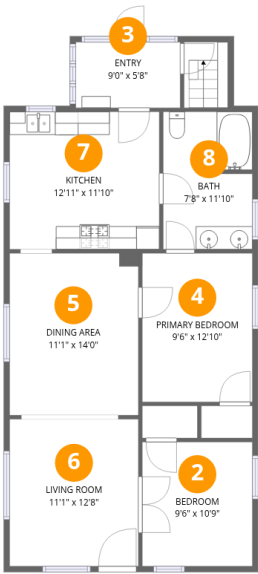
**806 East Myrtle Street, Eastside Park, Fort Collins, Larimer
County, Colorado, United States, 80524**



Total:10sqft Excluded: 137sqft

Scan captured on Fri, 09 Jan 2026 16:21:55 GMT

806 East Myrtle Street, Eastside Park, Fort Collins, Larimer County, Colorado, United States, 80524



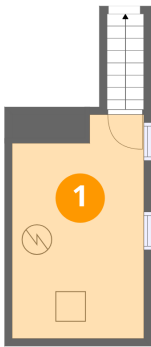
Room dimensions

Floor 2 Total:879sqft Excluded: 22sqft

#		Dimensions	sqft	Counted as living area
2	Bedroom	9'6" x 10'9"	102 sq. ft	Yes
3	Entry	9'0" x 5'8"	51 sq. ft	Yes
4	Primary Bedroom	9'6" x 12'10"	122 sq. ft	Yes
5	Dining Area	11'1" x 14'0"	153 sq. ft	Yes
6	Living Room	11'1" x 12'8"	141 sq. ft	Yes
7	Kitchen	12'11" x 11'10"	153 sq. ft	Yes
8	Bath	7'8" x 11'10"	90 sq. ft	Yes

806 East Myrtle Street, Eastside Park, Fort Collins, Larimer County, Colorado, United States, 80524

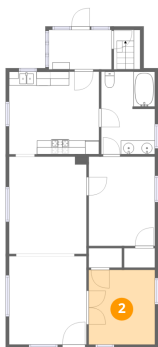
1 Floor 1 - Utility



Dimensions: 8'9" x 14'10"
Area: 121 sq. ft
Counted as living area: No

Heated: Yes
Finished: No
Enclosed: Yes
Contiguous: Yes
Permitted: Yes
Wet space: No
Addition: No
Conversion: No

2 Floor 2 - Bedroom

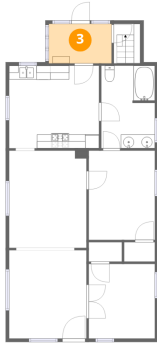


Dimensions: 9'6" x 10'9"
Area: 102 sq. ft
Counted as living area: Yes

Heated: Yes
Finished: Yes
Enclosed: Yes
Contiguous: Yes
Permitted: Yes
Wet space: No
Addition: No
Conversion: No

806 East Myrtle Street, Eastside Park, Fort Collins, Larimer County, Colorado, United States, 80524

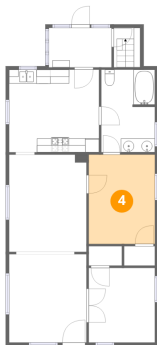
3 Floor 2 - Entry



Dimensions: 9'0" x 5'8"
Area: 51 sq. ft
Counted as living area: Yes

Heated: Yes
Finished: Yes
Enclosed: Yes
Contiguous: Yes
Permitted: Yes
Wet space: No
Addition: No
Conversion: No

4 Floor 2 - Primary Bedroom



Dimensions: 9'6" x 12'10"
Area: 122 sq. ft
Counted as living area: Yes

Heated: Yes
Finished: Yes
Enclosed: Yes
Contiguous: Yes
Permitted: Yes
Wet space: No
Addition: No
Conversion: No

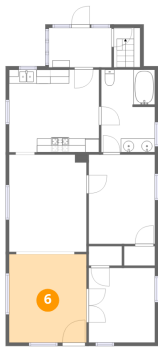
5 Floor 2 - Dining Area



Dimensions: 11'1" x 14'0"
Area: 153 sq. ft
Counted as living area: Yes

Heated: Yes
Finished: Yes
Enclosed: Yes
Contiguous: Yes
Permitted: Yes
Wet space: No
Addition: No
Conversion: No

6 Floor 2 - Living Room



Dimensions: 11'1" x 12'8"
Area: 141 sq. ft
Counted as living area: Yes

Heated: Yes
Finished: Yes
Enclosed: Yes
Contiguous: Yes
Permitted: Yes
Wet space: No
Addition: No
Conversion: No

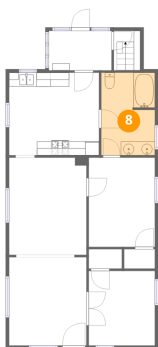
7 Floor 2 - Kitchen



Dimensions: 12'11" x 11'10"
Area: 153 sq. ft
Counted as living area: Yes

Heated: Yes
Finished: Yes
Enclosed: Yes
Contiguous: Yes
Permitted: Yes
Wet space: No
Addition: No
Conversion: No

8 Floor 2 - Bath



Dimensions: 7'8" x 11'10"
Area: 90 sq. ft
Counted as living area: Yes

Heated: Yes
Finished: Yes
Enclosed: Yes
Contiguous: Yes
Permitted: Yes
Wet space: Yes
Addition: No
Conversion: No