

1259 Larkspur Ct, Pingree Grove, IL, US



Total Area: 4108 sq. ft

Basement: 1173 sq. ft, 1st Floor: 1451 sq. ft, 2nd Floor: 1484 sq. ft

Excluded: Utility 163 sq. ft, Garage 563 sq. ft, Porch 97 sq. ft, Deck 674 sq. ft, Open to below 293 sq. ft, Walls: 284 sq. ft

Property summary

 **3** Floors

 **5** Bedrooms

 **3** Bathrooms

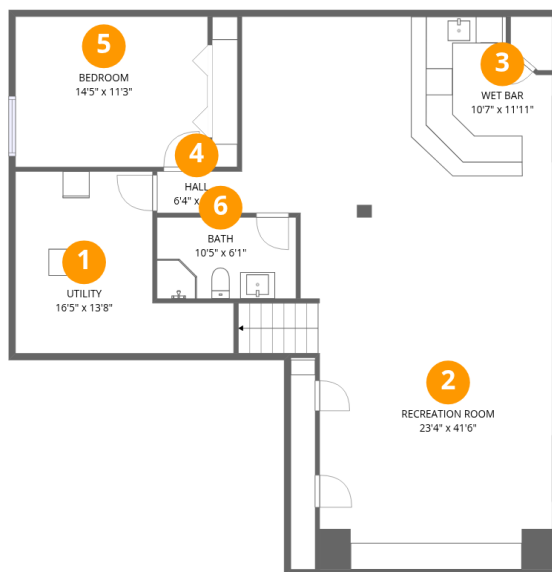
Home data report

1259 Larkspur Ct, Pingree Grove, IL, US

 **1**
Half baths

 **1**
Garages

1259 Larkspur Ct, Pingree Grove, IL, US



Room dimensions

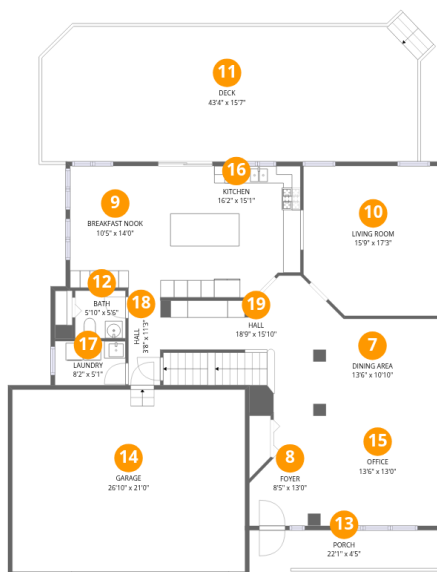
Floor 1 Below grade

Total: 1173sqft

Excluded: 163sqft

#		Dimensions	sqft	Counted as living area
1	Utility	16'5" x 13'8"	223 sq. ft	No
2	Recreation Room	23'4" x 41'6"	969 sq. ft	Yes
3	Wet Bar	10'7" x 11'11"	127 sq. ft	Yes
4	Hall	6'4" x 3'1"	20 sq. ft	Yes
5	Bedroom	14'5" x 11'3"	163 sq. ft	Yes
6	Bath	10'5" x 6'1"	64 sq. ft	Yes

1259 Larkspur Ct, Pingree Grove, IL, US



Room dimensions

Floor 2

Total: 1451 sqft

Excluded: 1334 sqft

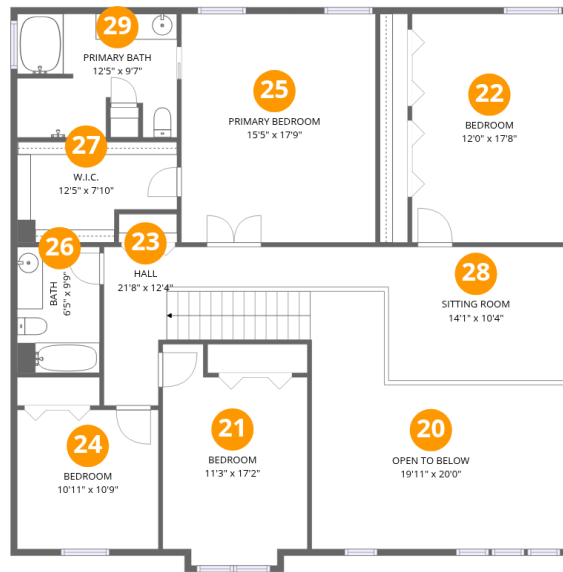
#		Dimensions	sqft	Counted as living area
7	Dining Area	13'6" x 10'10"	146 sq. ft	Yes
8	Foyer	8'5" x 13'0"	110 sq. ft	Yes
9	Breakfast Nook	10'5" x 14'0"	146 sq. ft	Yes
10	Living Room	15'9" x 17'3"	271 sq. ft	Yes
11	Deck	43'4" x 15'7"	674 sq. ft	No
12	Bath	5'10" x 5'6"	32 sq. ft	Yes
13	Porch	22'1" x 4'5"	97 sq. ft	No
14	Garage	26'10" x 21'0"	563 sq. ft	No
15	Office	13'6" x 13'0"	176 sq. ft	Yes
16	Kitchen	16'2" x 15'1"	245 sq. ft	Yes
17	Laundry	8'2" x 5'1"	41 sq. ft	Yes

Home data report

1259 Larkspur Ct, Pingree Grove, IL, US

#		Dimensions	sqft	Counted as living area
18	Hall	3'8" x 11'3"	41 sq. ft	Yes
19	Hall	18'9" x 15'10"	296 sq. ft	Yes

1259 Larkspur Ct, Pingree Grove, IL, US



Room dimensions

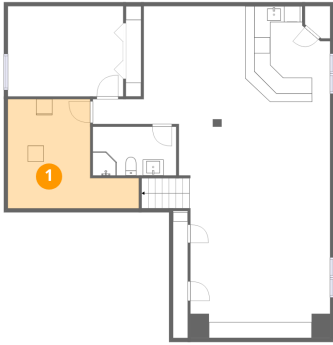
Floor 3

Total: 1484sqft

Excluded: 293sqft

#		Dimensions	sqft	Counted as living area
20	Open To Below	19'11" x 20'0"	397 sq. ft	No
21	Bedroom	11'3" x 17'2"	192 sq. ft	Yes
22	Bedroom	12'0" x 17'8"	212 sq. ft	Yes
23	Hall	21'8" x 12'4"	267 sq. ft	Yes
24	Bedroom	10'11" x 10'9"	118 sq. ft	Yes
25	Primary Bedroom	15'5" x 17'9"	273 sq. ft	Yes
26	Bath	6'5" x 9'9"	62 sq. ft	Yes
27	W.I.C.	12'5" x 7'10"	97 sq. ft	Yes
28	Sitting Room	14'1" x 10'4"	146 sq. ft	Yes
29	Primary Bath	12'5" x 9'7"	119 sq. ft	Yes

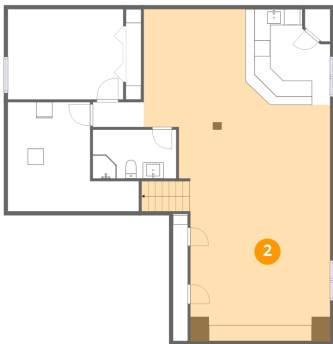
1 Floor 1 - Utility



Dimensions: 16'5" x 13'8"
Area: 223 sq. ft
Counted as living area: No

Heated: Yes
Finished: No
Enclosed: Yes
Contiguous: Yes
Permitted: Yes
Wet space: No
Addition: No
Conversion: No

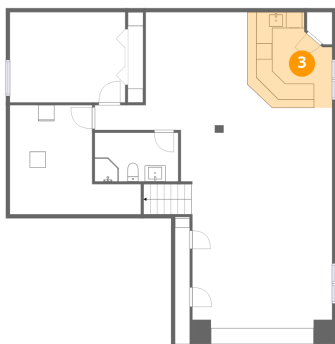
2 Floor 1 - Recreation Room



Dimensions: 23'4" x 41'6"
Area: 969 sq. ft
Counted as living area: Yes

Heated: Yes
Finished: Yes
Enclosed: Yes
Contiguous: Yes
Permitted: Yes
Wet space: No
Addition: No
Conversion: No

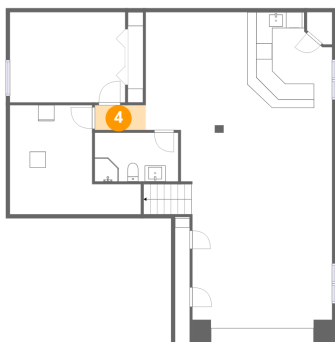
3 Floor 1 - Wet Bar



Dimensions: 10'7" x 11'11"
Area: 127 sq. ft
Counted as living area: Yes

Heated: Yes
Finished: Yes
Enclosed: Yes
Contiguous: Yes
Permitted: Yes
Wet space: No
Addition: No
Conversion: No

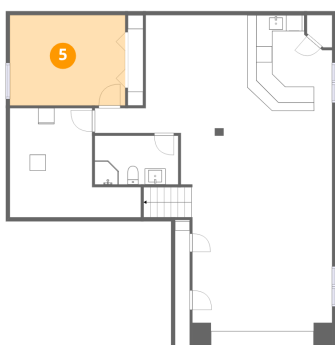
4 Floor 1 - Hall



Dimensions: 6'4" x 3'1"
Area: 20 sq. ft
Counted as living area: Yes

Heated: Yes
Finished: Yes
Enclosed: Yes
Contiguous: Yes
Permitted: Yes
Wet space: No
Addition: No
Conversion: No

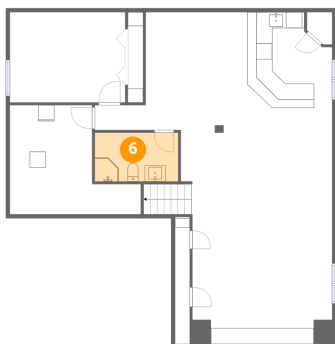
5 Floor 1 - Bedroom



Dimensions: 14'5" x 11'3"
Area: 163 sq. ft
Counted as living area: Yes

Heated: Yes
Finished: Yes
Enclosed: Yes
Contiguous: Yes
Permitted: Yes
Wet space: No
Addition: No
Conversion: No

6 Floor 1 - Bath



Dimensions: 10'5" x 6'1"
Area: 64 sq. ft
Counted as living area: Yes

Heated: Yes
Finished: Yes
Enclosed: Yes
Contiguous: Yes
Permitted: Yes
Wet space: Yes
Addition: No
Conversion: No

7 Floor 2 - Dining Area



Dimensions: 13'6" x 10'10"
Area: 146 sq. ft
Counted as living area: Yes

Heated: Yes
Finished: Yes
Enclosed: Yes
Contiguous: Yes
Permitted: Yes
Wet space: No
Addition: No
Conversion: No

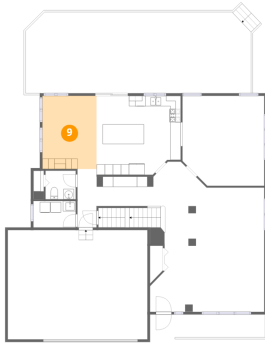
8 Floor 2 - Foyer



Dimensions: 8'5" x 13'0"
Area: 110 sq. ft
Counted as living area: Yes

Heated: Yes
Finished: Yes
Enclosed: Yes
Contiguous: Yes
Permitted: Yes
Wet space: No
Addition: No
Conversion: No

9 Floor 2 - Breakfast Nook



Dimensions: 10'5" x 14'0"
Area: 146 sq. ft
Counted as living area: Yes

Heated: Yes
Finished: Yes
Enclosed: Yes
Contiguous: Yes
Permitted: Yes
Wet space: No
Addition: No
Conversion: No

10 Floor 2 - Living Room



Dimensions: 15'9" x 17'3"
Area: 271 sq. ft
Counted as living area: Yes

Heated: Yes
Finished: Yes
Enclosed: Yes
Contiguous: Yes
Permitted: Yes
Wet space: No
Addition: No
Conversion: No

11 Floor 2 - Deck



Dimensions: 43'4" x 15'7"
Area: 674 sq. ft
Counted as living area: No

Heated: No
Finished: No
Enclosed: No
Contiguous: Yes
Permitted: Yes
Wet space: No
Addition: No
Conversion: No

12 Floor 2 - Bath



Dimensions: 5'10" x 5'6"
Area: 32 sq. ft
Counted as living area: Yes

Heated: Yes
Finished: Yes
Enclosed: Yes
Contiguous: Yes
Permitted: Yes
Wet space: Yes
Addition: No
Conversion: No

13 Floor 2 - Porch



Dimensions: 22'1" x 4'5"
Area: 97 sq. ft
Counted as living area: No

Heated: No
Finished: No
Enclosed: No
Contiguous: Yes
Permitted: Yes
Wet space: No
Addition: No
Conversion: No

14 Floor 2 - Garage



Dimensions: 26'10" x 21'0"
Area: 563 sq. ft
Counted as living area: No

Heated: No
Finished: No
Enclosed: Yes
Contiguous: Yes
Permitted: Yes
Wet space: No
Addition: No
Conversion: No

15 Floor 2 - Office



Dimensions: 13'6" x 13'0"
Area: 176 sq. ft
Counted as living area: Yes

Heated: Yes
Finished: Yes
Enclosed: Yes
Contiguous: Yes
Permitted: Yes
Wet space: No
Addition: No
Conversion: No

16 Floor 2 - Kitchen



Dimensions: 16'2" x 15'1"
Area: 245 sq. ft
Counted as living area: Yes

Heated: Yes
Finished: Yes
Enclosed: Yes
Contiguous: Yes
Permitted: Yes
Wet space: No
Addition: No
Conversion: No

17 Floor 2 - Laundry



Dimensions: 8'2" x 5'1"
Area: 41 sq. ft
Counted as living area: Yes

Heated: Yes
Finished: Yes
Enclosed: Yes
Contiguous: Yes
Permitted: Yes
Wet space: No
Addition: No
Conversion: No

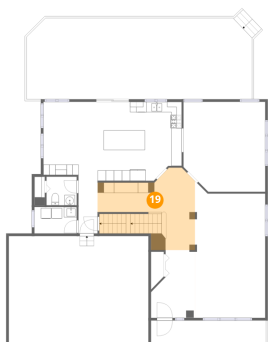
18 Floor 2 - Hall



Dimensions: 3'8" x 11'3"
Area: 41 sq. ft
Counted as living area: Yes

Heated: Yes
Finished: Yes
Enclosed: Yes
Contiguous: Yes
Permitted: Yes
Wet space: No
Addition: No
Conversion: No

19 Floor 2 - Hall



Dimensions: 18'9" x 15'10"
Area: 296 sq. ft
Counted as living area: Yes

Heated: Yes
Finished: Yes
Enclosed: Yes
Contiguous: Yes
Permitted: Yes
Wet space: No
Addition: No
Conversion: No

20 Floor 3 - Open To Below



Dimensions: 19'11" x 20'0"
Area: 397 sq. ft
Counted as living area: No

Heated: No
Finished: No
Enclosed: No
Contiguous: Yes
Permitted: No
Wet space: No
Addition: No
Conversion: No

21 Floor 3 - Bedroom



Dimensions: 11'3" x 17'2"
Area: 192 sq. ft
Counted as living area: Yes

Heated: Yes
Finished: Yes
Enclosed: Yes
Contiguous: Yes
Permitted: Yes
Wet space: No
Addition: No
Conversion: No

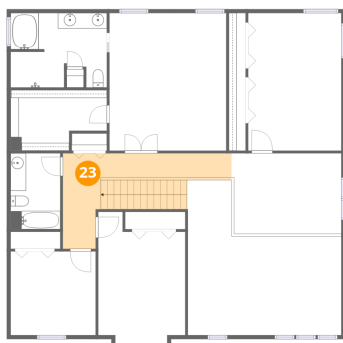
22 Floor 3 - Bedroom



Dimensions: 12'0" x 17'8"
Area: 212 sq. ft
Counted as living area: Yes

Heated: Yes
Finished: Yes
Enclosed: Yes
Contiguous: Yes
Permitted: Yes
Wet space: No
Addition: No
Conversion: No

23 Floor 3 - Hall



Dimensions: 21'8" x 12'4"
Area: 267 sq. ft
Counted as living area: Yes

Heated: Yes
Finished: Yes
Enclosed: Yes
Contiguous: Yes
Permitted: Yes
Wet space: No
Addition: No
Conversion: No

24 Floor 3 - Bedroom



Dimensions: 10'11" x 10'9"
Area: 118 sq. ft
Counted as living area: Yes

Heated: Yes
Finished: Yes
Enclosed: Yes
Contiguous: Yes
Permitted: Yes
Wet space: No
Addition: No
Conversion: No

25 Floor 3 - Primary Bedroom



Dimensions: 15'5" x 17'9"
Area: 273 sq. ft
Counted as living area: Yes

Heated: Yes
Finished: Yes
Enclosed: Yes
Contiguous: Yes
Permitted: Yes
Wet space: No
Addition: No
Conversion: No

26 Floor 3 - Bath



Dimensions: 6'5" x 9'9"
Area: 62 sq. ft
Counted as living area: Yes

Heated: Yes
Finished: Yes
Enclosed: Yes
Contiguous: Yes
Permitted: Yes
Wet space: Yes
Addition: No
Conversion: No

27 Floor 3 - W.I.C.



Dimensions: 12'5" x 7'10"
Area: 97 sq. ft
Counted as living area: Yes

Heated: Yes
Finished: Yes
Enclosed: Yes
Contiguous: Yes
Permitted: Yes
Wet space: No
Addition: No
Conversion: No

28 Floor 3 - Sitting Room



Dimensions: 14'1" x 10'4"
Area: 146 sq. ft
Counted as living area: Yes

Heated: Yes
Finished: Yes
Enclosed: Yes
Contiguous: Yes
Permitted: Yes
Wet space: No
Addition: No
Conversion: No

29 Floor 3 - Primary Bath



Dimensions: 12'5" x 9'7"
Area: 119 sq. ft
Counted as living area: Yes

Heated: Yes
Finished: Yes
Enclosed: Yes
Contiguous: Yes
Permitted: Yes
Wet space: Yes
Addition: No
Conversion: No