

25-430 Duncan St

New Westminster BC V3M 0M2

Lower Level Area: 125 SQ.FT.
Main Level Area: 685 SQ.FT.
Upper Level Area: 735 SQ.FT.
Total Area 1,545 SQ.FT.

3



BEDROOMS

3

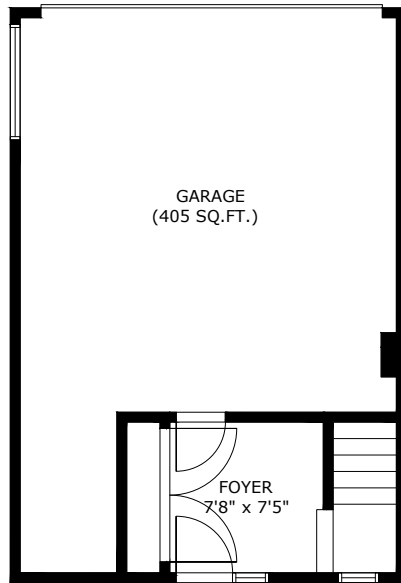


BATHROOMS

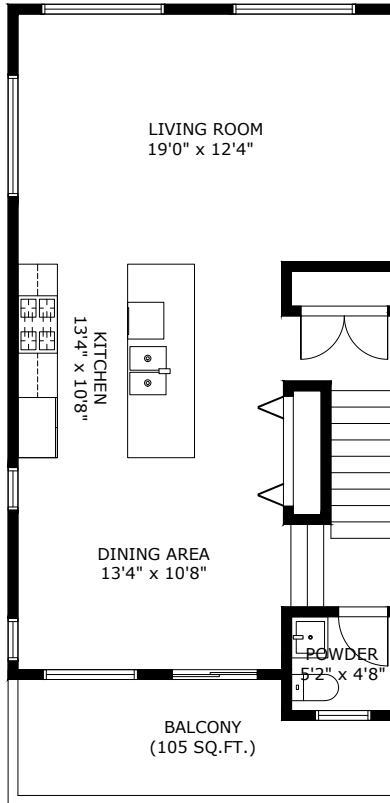
1,545



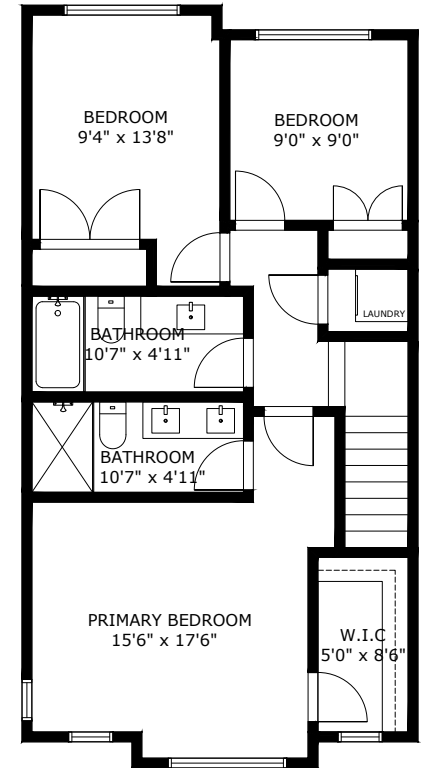
TOTAL SQ.FT.



Lower Level Area:
Ceiling Height: 8'0"



Main Level Area:
Ceiling Height: 9'0"



Upper Level Area:
Ceiling Height: 8'0"

25-430 DUNCAN ST NEW WESTMINSTER BC V3M 0M2

Measurements are approximate and may not be to scale.

The floor plan illustration is not suitable for construction/architectural purposes.

This communication is not intended to cause or induce breach of an existing agency agreement

3D IMMERSIVE
Tours Photos Floor Plans

Professionally measured by 3D Immersive Marketing Ltd

Lead Floor Planner: *Simon Alexander*
Quality Assurance: *Francine Graham*