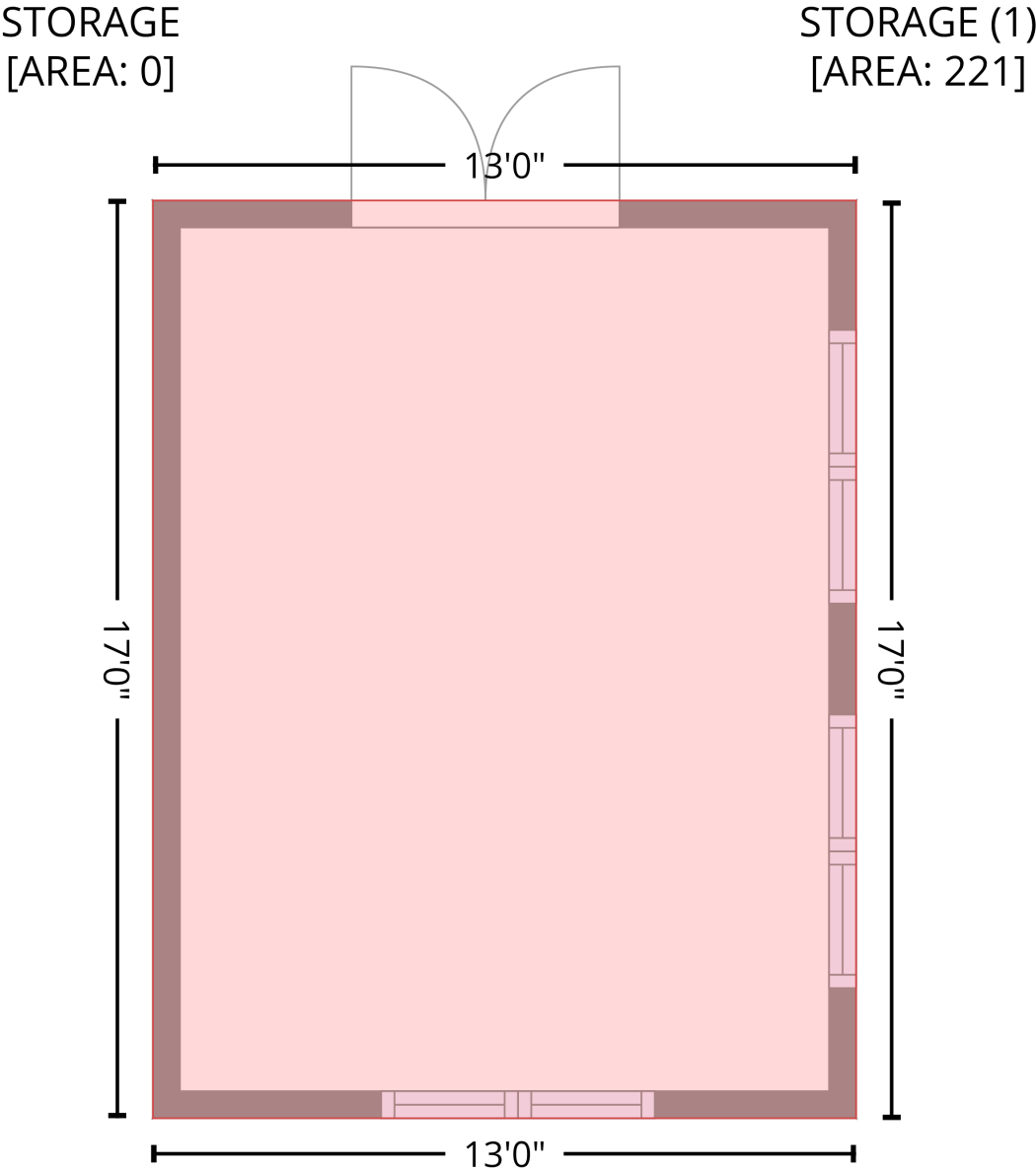


17821 Carlow Rd, Cornelius, NC, US

Gross Living Area: 0 sq. ft

Level 1 - Below Grade

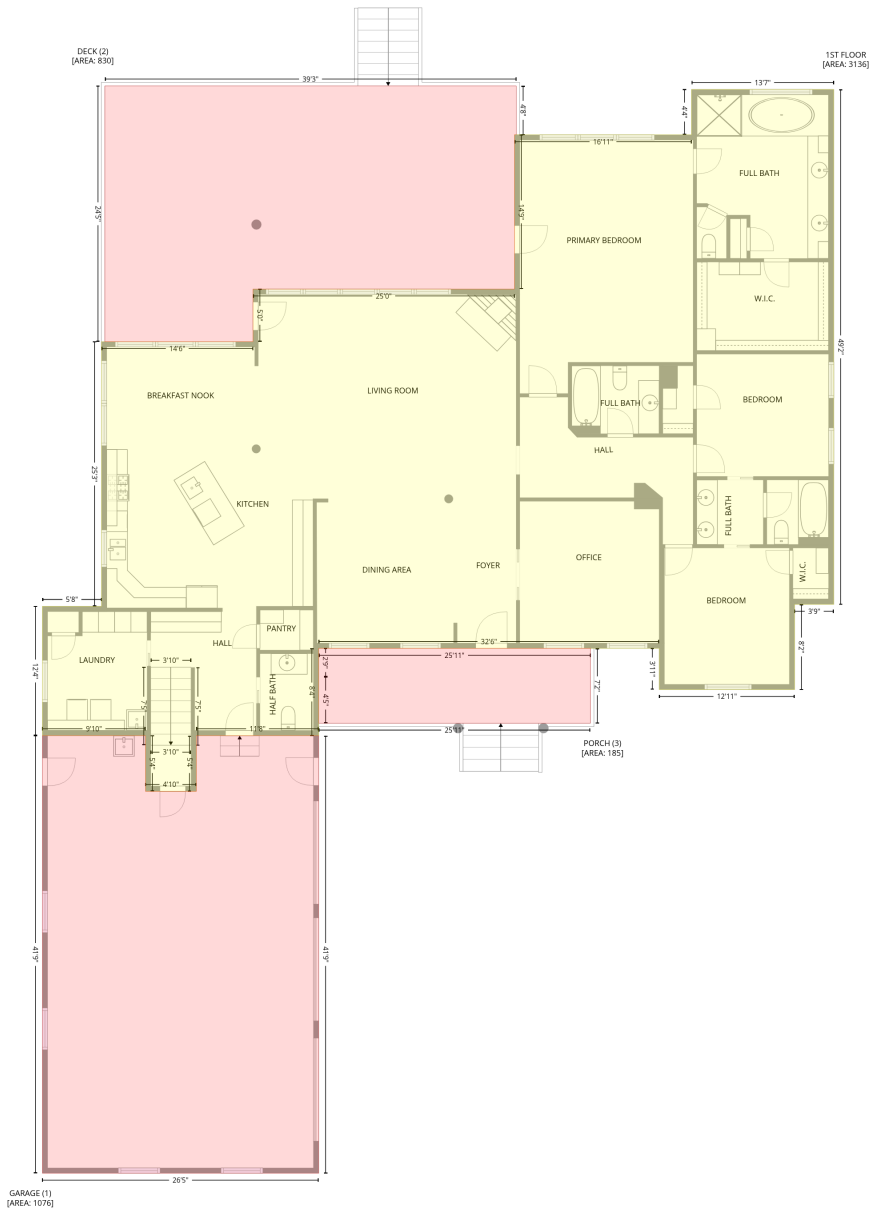


Space	Area (sq. ft)	Calculation <small>Coordinate Polygon Area Algorithm using inches</small>
STORAGE (Non-living area)	221	$-((155.2 + 155.2) * (797 - 1000.6) + (155.2 + -0.8) * (1000.6 - 1000.6) + (-0.8 + -0.8) * (1000.6 - 797) + (-0.8 + 155.2) * (797 - 797)) * 0.5 * 0.00694$

17821 Carlow Rd,Cornelius,NC,US

Gross Living Area: 0 sq. ft

Level 2 - Below Grade



Space	Area (sq. ft)	Calculation
1ST FLOOR (Living area)	3136	Coordinate Polygon Area Algorithm using inches $-((1211.1 + 1211.1) * (76.9 - 666.8) + (1211.1 + 1166.2) * (666.8 - 666.8) + (1166.2 + 1166.2) * (666.8 - 764.4) + (1166.2 + 1011) * (764.4 - 764.4) + (1011 + 1011) * (764.4 - 717.2) + (1011 + 621) * (717.2 - 717.2) + (621 + 621) * (717.2 - 817.2) + (621 + 480.8) * (817.2 - 817.2) + (480.8 + 480.8) * (817.2 - 881) + (480.8 + 422.5) * (881 - 881) + (422.5 + 422.5) * (881 - 817.2) + (422.5 + 304.3) * (817.2 - 817.2) + (304.3 + 304.3) * (817.2 - 669.1) + (304.3 + 372) * (669.1 - 669.1) + (372 + 372) * (669.1 - 365.9) + (372 + 545.7) * (365.9 - 365.9) + (545.7 + 545.7) * (365.9 - 305.7) + (545.7 + 845.2) * (305.7 - 305.7) + (845.2 + 845.2) * (305.7 - 128.9) + (845.2 + 1048) * (128.9 - 128.9) + (1048 + 1048) * (128.9 - 76.9) + (1048 + 1211.1) * (76.9 - 76.9)) * 0.5 * 0.00694$

17821 Carlow Rd,Cornelius,NC,US

Gross Living Area: 0 sq. ft

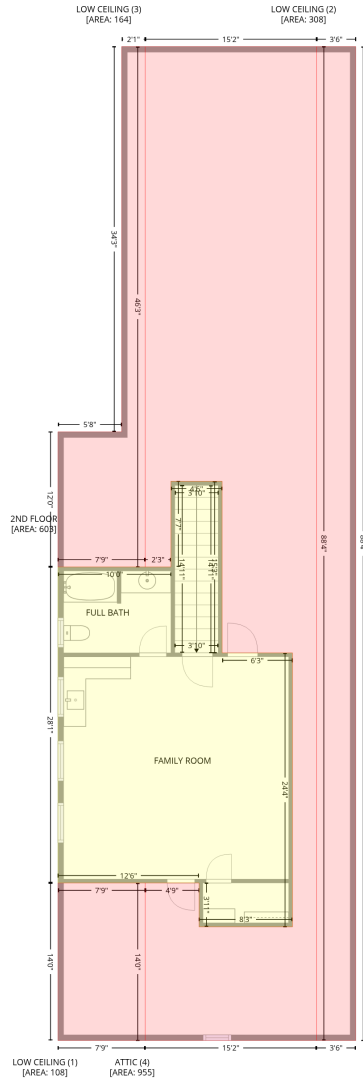
Level 2 - Below Grade

Space	Area (sq. ft)	Calculation <small>Coordinate Polygon Area Algorithm using inches</small>
GARAGE (Non-living area)	1076	$-\left((422.5 + 422.5) * (817.2 - 881) + (422.5 + 480.8) * (881 - 881) + (480.8 + 480.8) * (881 - 817.2) + (480.8 + 621) * (817.2 - 817.2) + (621 + 621) * (817.2 - 1318.4) + (621 + 304.3) * (1318.4 - 1318.4) + (304.3 + 304.3) * (1318.4 - 817.2) + (304.3 + 422.5) * (817.2 - 817.2)\right) * 0.5 * 0.00694$
DECK (Non-living area)	830	$-\left((847.2 + 847.2) * (73 - 128.9) + (847.2 + 845.2) * (128.9 - 128.9) + (845.2 + 845.2) * (128.9 - 305.7) + (845.2 + 545.7) * (305.7 - 305.7) + (545.7 + 545.7) * (305.7 - 365.9) + (545.7 + 375.9) * (365.9 - 365.9) + (375.9 + 375.9) * (365.9 - 73) + (375.9 + 847.2) * (73 - 73)\right) * 0.5 * 0.00694$
PORCH (Non-living area)	185	$-\left((932.3 + 932.3) * (717.2 - 802.9) + (932.3 + 621) * (802.9 - 802.9) + (621 + 621) * (802.9 - 749.9) + (621 + 621) * (749.9 - 717.2) + (621 + 932.3) * (717.2 - 717.2)\right) * 0.5 * 0.00694$

17821 Carlow Rd,Cornelius,NC,US

Gross Living Area: 0 sq. ft

Level 3 - Below Grade



Space	Area (sq. ft)	Calculation
2ND FLOOR (Living area)	603	Coordinate Polygon Area Algorithm using inches $-((478.8 + 478.8) * (721.7 - 904.9) + (478.8 + 553.6) * (904.9 - 904.9) + (553.6 + 553.6) * (904.9 - 1197.1) + (553.6 + 454.3) * (1197.1 - 1197.1) + (454.3 + 454.3) * (1197.1 - 1150.2) + (454.3 + 304.3) * (1150.2 - 1150.2) + (304.3 + 304.3) * (1150.2 - 813.1) + (304.3 + 424.4) * (813.1 - 813.1) + (424.4 + 424.4) * (813.1 - 721.7) + (424.4 + 478.8) * (721.7 - 721.7)) * 0.5 * 0.00694$
LOW CEILING (Non-living area)	108	$-((397 + 397) * (1150.2 - 1318.4) + (397 + 304.3) * (1318.4 - 1318.4) + (304.3 + 304.3) * (1318.4 - 1150.2) + (304.3 + 397) * (1150.2 - 1150.2)) * 0.5 * 0.00694$

17821 Carlow Rd,Cornelius,NC,US

Gross Living Area: 0 sq. ft

Level 3 - Below Grade

Space	Area (sq. ft)	Calculation <small>Coordinate Polygon Area Algorithm using inches</small>
LOW CEILING (Non-living area)	308	$-\left((621 + 621) * (258 - 1318.4) + (621 + 579.2) * (1318.4 - 1318.4) + (579.2 + 579.2) * (1318.4 - 258) + (579.2 + 621) * (258 - 258)\right) * 0.5 * 0.00694$
LOW CEILING (Non-living area)	164	$-\left((397 + 397) * (258 - 813.1) + (397 + 304.3) * (813.1 - 813.1) + (304.3 + 304.3) * (813.1 - 669.1) + (304.3 + 372) * (669.1 - 669.1) + (372 + 372) * (669.1 - 258) + (372 + 397) * (258 - 258)\right) * 0.5 * 0.00694$
ATTIC (Non-living area)	955	$-\left((579.2 + 579.2) * (258 - 1318.4) + (579.2 + 397) * (1318.4 - 1318.4) + (397 + 397) * (1318.4 - 1150.2) + (397 + 454.3) * (1150.2 - 1150.2) + (454.3 + 454.3) * (1150.2 - 1197.1) + (454.3 + 553.6) * (1197.1 - 1197.1) + (553.6 + 553.6) * (1197.1 - 904.9) + (553.6 + 478.8) * (904.9 - 904.9) + (478.8 + 478.8) * (904.9 - 721.7) + (478.8 + 424.4) * (721.7 - 721.7) + (424.4 + 424.4) * (721.7 - 813.1) + (424.4 + 397) * (813.1 - 813.1) + (397 + 397) * (813.1 - 258) + (397 + 579.2) * (258 - 258)\right) * 0.5 * 0.00694$