

Home data report

21014 Follensby Court, Land O'Lakes, Pasco County, Florida,
United States, 34637



Total Area: 1710 sq. ft

1st Floor: 1051 sq. ft, 2nd Floor: 659 sq. ft

Excluded: Garage 330 sq. ft, Screened porch 686 sq. ft, Porch 56 sq. ft, Walls: 217 sq. ft

Property summary



Scan captured on Wed, 06 May 2026 20:46:11 GMT

MEASUREMENTS ARE APPROXIMATE. DEEMED HIGHLY RELIABLE BUT NOT GUARANTEED.

Home data report

**21014 Follensby Court, Land O'Lakes, Pasco County, Florida,
United States, 34637**



1
Half baths



1
Garages

Home data report

21014 Follensby Court, Land O'Lakes, Pasco County, Florida, United States, 34637



Room dimensions

Floor 1

Total:1051sqft

Excluded: 1072sqft

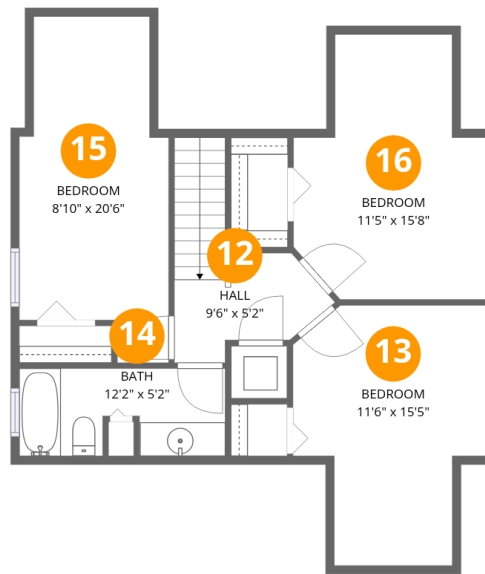
#		Dimensions	sqft	Counted as living area
1	Porch	9'10" x 5'8"	56 sq. ft	No
2	Swimming Pool	26'6" x 19'6"	327 sq. ft	No
3	Primary Bedroom	14'10" x 11'10"	176 sq. ft	Yes
4	Primary Bath	8'10" x 9'2"	81 sq. ft	Yes
5	Screened Porch	32'7" x 36'9"	1012 sq. ft	No
6	Dining Area	15'2" x 14'5"	218 sq. ft	Yes
7	Bath	6'2" x 4'11"	24 sq. ft	Yes
8	Eat-in Kitchen	12'6" x 14'5"	171 sq. ft	Yes
9	Living Room	18'6" x 17'0"	280 sq. ft	Yes
10	W.I.C.	12'2" x 3'11"	49 sq. ft	Yes
11	Garage	17'9" x 18'6"	330 sq. ft	No

Scan captured on Wed, 06 May 2026 20:46:11 GMT

MEASUREMENTS ARE APPROXIMATE. DEEMED HIGHLY RELIABLE BUT NOT GUARANTEED.

Home data report

21014 Follensby Court, Land O'Lakes, Pasco County, Florida,
United States, 34637



Room dimensions

Floor 2

Total:659sqft

Excluded: 0sqft

#		Dimensions	sqft	Counted as living area
12	Hall	9'6" x 5'2"	67 sq. ft	Yes
13	Bedroom	11'6" x 15'5"	144 sq. ft	Yes
14	Bath	12'2" x 5'2"	58 sq. ft	Yes
15	Bedroom	8'10" x 20'6"	153 sq. ft	Yes
16	Bedroom	11'5" x 15'8"	148 sq. ft	Yes

21014 Follensby Court, Land O'Lakes, Pasco County, Florida,
United States, 34637

1 Floor 1 - Porch



Dimensions: 9'10" x 5'8"
Area: 56 sq. ft
Counted as living area: No

Heated: No
Finished: No
Enclosed: No
Contiguous: Yes
Permitted: Yes
Wet space: No
Addition: No
Conversion: No

2 Floor 1 - Swimming Pool



Dimensions: 26'6" x 19'6"
Area: 327 sq. ft
Counted as living area: No

Heated: No
Finished: No
Enclosed: No
Contiguous: Yes
Permitted: No
Wet space: No
Addition: No
Conversion: No

21014 Follensby Court, Land O'Lakes, Pasco County, Florida,
United States, 34637

3 Floor 1 - Primary Bedroom



Dimensions: 14'10" x 11'10"
Area: 176 sq. ft
Counted as living area: Yes

Heated: Yes
Finished: Yes
Enclosed: Yes
Contiguous: Yes
Permitted: Yes
Wet space: No
Addition: No
Conversion: No

4 Floor 1 - Primary Bath



Dimensions: 8'10" x 9'2"
Area: 81 sq. ft
Counted as living area: Yes

Heated: Yes
Finished: Yes
Enclosed: Yes
Contiguous: Yes
Permitted: Yes
Wet space: Yes
Addition: No
Conversion: No

5 Floor 1 - Screened Porch



Dimensions: 32'7" x 36'9"
Area: 1012 sq. ft
Counted as living area: No

Heated: No
Finished: No
Enclosed: No
Contiguous: Yes
Permitted: Yes
Wet space: No
Addition: No
Conversion: No

21014 Follensby Court, Land O'Lakes, Pasco County, Florida,
United States, 34637

6 Floor 1 - Dining Area



Dimensions: 15'2" x 14'5"
Area: 218 sq. ft
Counted as living area: Yes

Heated: Yes
Finished: Yes
Enclosed: Yes
Contiguous: Yes
Permitted: Yes
Wet space: No
Addition: No
Conversion: No

7 Floor 1 - Bath



Dimensions: 6'2" x 4'11"
Area: 24 sq. ft
Counted as living area: Yes

Heated: Yes
Finished: Yes
Enclosed: Yes
Contiguous: Yes
Permitted: Yes
Wet space: Yes
Addition: No
Conversion: No

8 Floor 1 - Eat-in Kitchen



Dimensions: 12'6" x 14'5"
Area: 171 sq. ft
Counted as living area: Yes

Heated: Yes
Finished: Yes
Enclosed: Yes
Contiguous: Yes
Permitted: Yes
Wet space: No
Addition: No
Conversion: No

21014 Follensby Court, Land O'Lakes, Pasco County, Florida,
United States, 34637

9 Floor 1 - Living Room



Dimensions: 18'6" x 17'0"
Area: 280 sq. ft
Counted as living area: Yes

Heated: Yes
Finished: Yes
Enclosed: Yes
Contiguous: Yes
Permitted: Yes
Wet space: No
Addition: No
Conversion: No

10 Floor 1 - W.I.C.



Dimensions: 12'2" x 3'11"
Area: 49 sq. ft
Counted as living area: Yes

Heated: Yes
Finished: Yes
Enclosed: Yes
Contiguous: Yes
Permitted: Yes
Wet space: No
Addition: No
Conversion: No

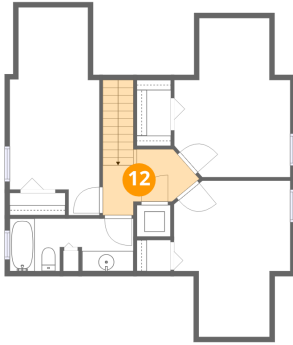
11 Floor 1 - Garage



Dimensions: 17'9" x 18'6"
Area: 330 sq. ft
Counted as living area: No

Heated: No
Finished: No
Enclosed: Yes
Contiguous: Yes
Permitted: Yes
Wet space: No
Addition: No
Conversion: No

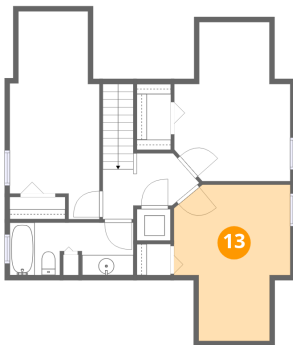
12 Floor 2 - Hall



Dimensions: 9'6" x 5'2"
Area: 67 sq. ft
Counted as living area: Yes

Heated: Yes
Finished: Yes
Enclosed: Yes
Contiguous: Yes
Permitted: Yes
Wet space: No
Addition: No
Conversion: No

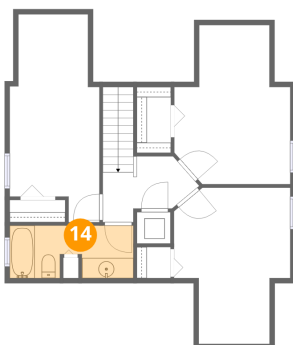
13 Floor 2 - Bedroom



Dimensions: 11'6" x 15'5"
Area: 144 sq. ft
Counted as living area: Yes

Heated: Yes
Finished: Yes
Enclosed: Yes
Contiguous: Yes
Permitted: Yes
Wet space: No
Addition: No
Conversion: No

14 Floor 2 - Bath

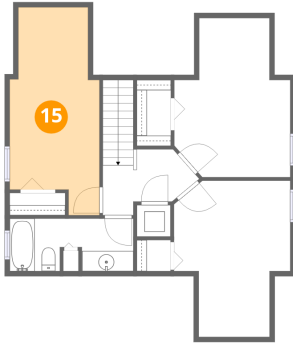


Dimensions: 12'2" x 5'2"
Area: 58 sq. ft
Counted as living area: Yes

Heated: Yes
Finished: Yes
Enclosed: Yes
Contiguous: Yes
Permitted: Yes
Wet space: Yes
Addition: No
Conversion: No

21014 Follensby Court, Land O'Lakes, Pasco County, Florida,
United States, 34637

15 Floor 2 - Bedroom



Dimensions: 8'10" x 20'6"
Area: 153 sq. ft
Counted as living area: Yes

Heated: Yes
Finished: Yes
Enclosed: Yes
Contiguous: Yes
Permitted: Yes
Wet space: No
Addition: No
Conversion: No

16 Floor 2 - Bedroom



Dimensions: 11'5" x 15'8"
Area: 148 sq. ft
Counted as living area: Yes

Heated: Yes
Finished: Yes
Enclosed: Yes
Contiguous: Yes
Permitted: Yes
Wet space: No
Addition: No
Conversion: No