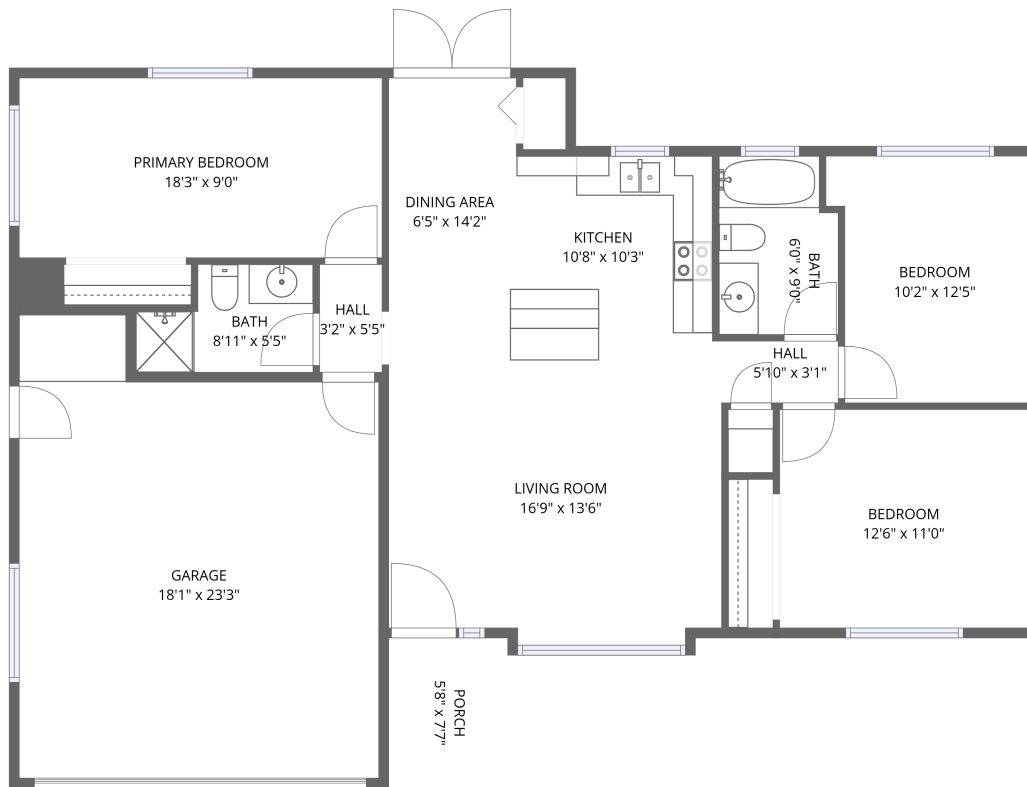


Home data report

511 Avenida Montecito Verde, Nipomo, CA, US



1st floor

Total Area: 1055 sq. ft

1st Floor: 1055 sq. ft

Excluded: Porch 43 sq. ft, Garage 379 sq. ft, Embedded window 8 sq. ft, Walls: 105 sq. ft

Property summary

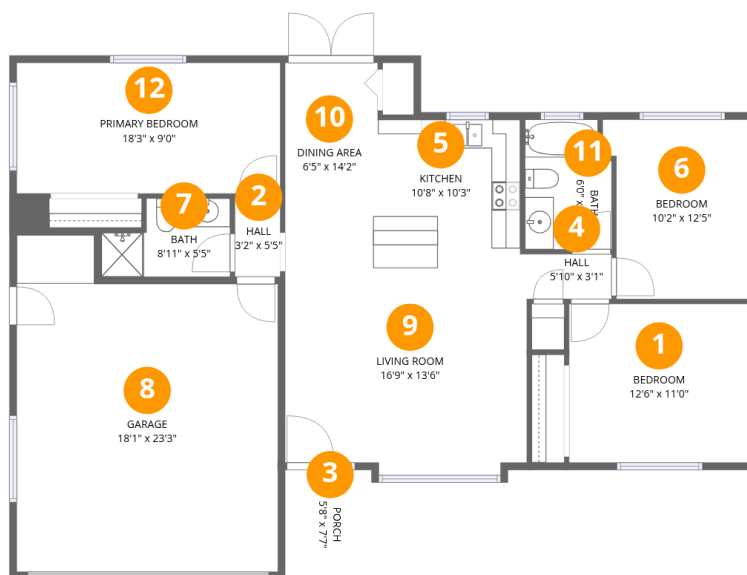
 **1** Floors

 **3** Bedrooms

 **2** Bathrooms

 **1** Garages

511 Avenida Montecito Verde, Nipomo, CA, US



Room dimensions

Floor 1

Total: 1055 sqft Excluded: 430 sqft

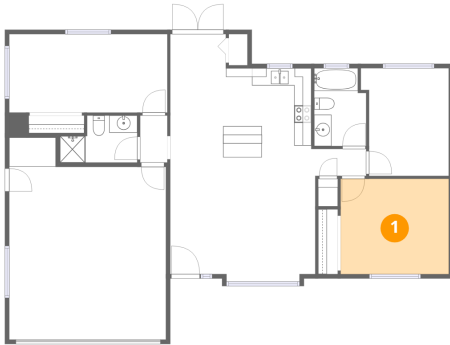
#		Dimensions	sqft	Counted as living area
1	Bedroom	12'6" x 11'0"	137 sq. ft	Yes
2	Hall	3'2" x 5'5"	17 sq. ft	Yes
3	Porch	5'8" x 7'7"	43 sq. ft	No
4	Hall	5'10" x 3'1"	18 sq. ft	Yes
5	Kitchen	10'8" x 10'3"	103 sq. ft	Yes
6	Bedroom	10'2" x 12'5"	117 sq. ft	Yes
7	Bath	8'11" x 5'5"	41 sq. ft	Yes
8	Garage	18'1" x 23'3"	379 sq. ft	No
9	Living Room	16'9" x 13'6"	226 sq. ft	Yes
10	Dining Area	6'5" x 14'2"	90 sq. ft	Yes
11	Bath	6'0" x 9'0"	51 sq. ft	Yes

Home data report

511 Avenida Montecito Verde,Nipomo,CA,US

#		Dimensions	sqft	Counted as living area
12	Primary Bedroom	18'3" x 9'0"	165 sq. ft	Yes

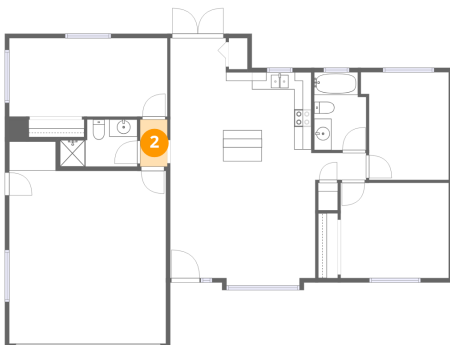
1 Floor 1 - Bedroom



Dimensions: 12'6" x 11'0"
Area: 137 sq. ft
Counted as living area: Yes

Heated: Yes
Finished: Yes
Enclosed: Yes
Contiguous: Yes
Permitted: Yes
Wet space: No
Addition: No
Conversion: No

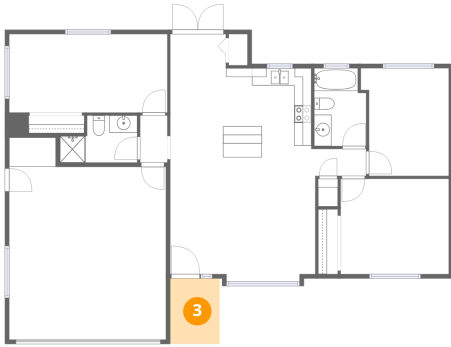
2 Floor 1 - Hall



Dimensions: 3'2" x 5'5"
Area: 17 sq. ft
Counted as living area: Yes

Heated: Yes
Finished: Yes
Enclosed: Yes
Contiguous: Yes
Permitted: Yes
Wet space: No
Addition: No
Conversion: No

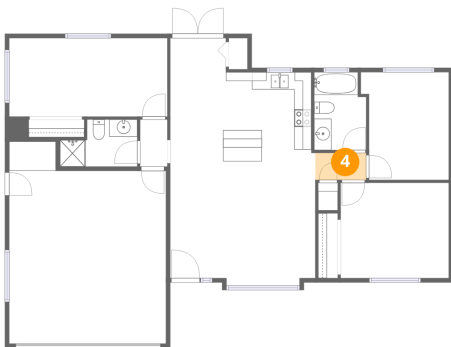
3 Floor 1 - Porch



Dimensions: 5'8" x 7'7"
Area: 43 sq. ft
Counted as living area: No

Heated: No
Finished: No
Enclosed: No
Contiguous: Yes
Permitted: Yes
Wet space: No
Addition: No
Conversion: No

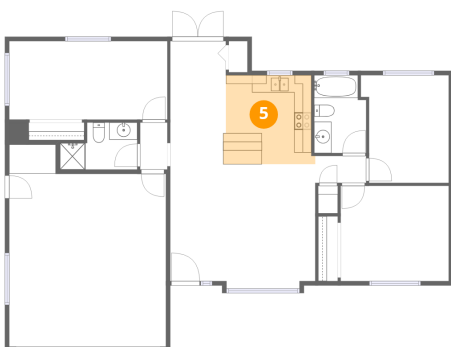
4 Floor 1 - Hall



Dimensions: 5'10" x 3'1"
Area: 18 sq. ft
Counted as living area: Yes

Heated: Yes
Finished: Yes
Enclosed: Yes
Contiguous: Yes
Permitted: Yes
Wet space: No
Addition: No
Conversion: No

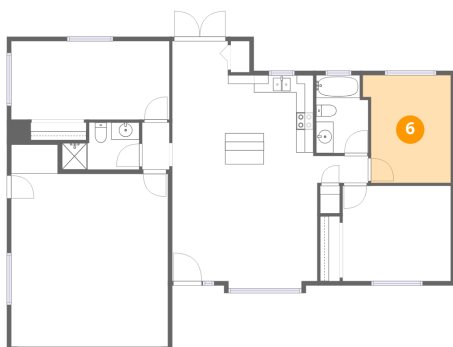
5 Floor 1 - Kitchen



Dimensions: 10'8" x 10'3"
Area: 103 sq. ft
Counted as living area: Yes

Heated: Yes
Finished: Yes
Enclosed: Yes
Contiguous: Yes
Permitted: Yes
Wet space: No
Addition: No
Conversion: No

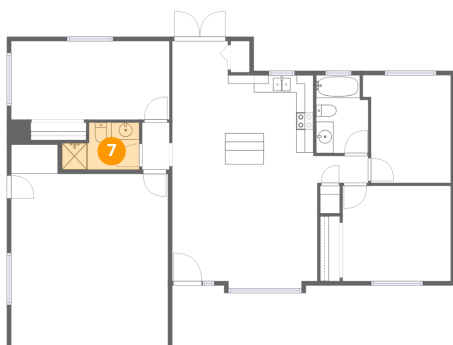
6 Floor 1 - Bedroom



Dimensions: 10'2" x 12'5"
Area: 117 sq. ft
Counted as living area: Yes

Heated: Yes
Finished: Yes
Enclosed: Yes
Contiguous: Yes
Permitted: Yes
Wet space: No
Addition: No
Conversion: No

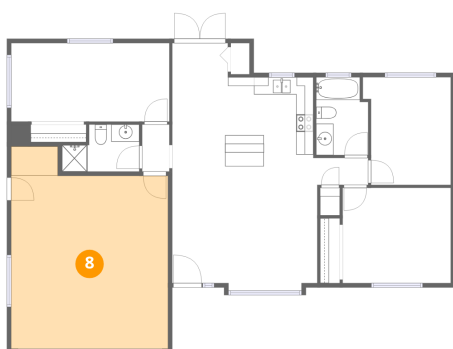
7 Floor 1 - Bath



Dimensions: 8'11" x 5'5"
Area: 41 sq. ft
Counted as living area: Yes

Heated: Yes
Finished: Yes
Enclosed: Yes
Contiguous: Yes
Permitted: Yes
Wet space: Yes
Addition: No
Conversion: No

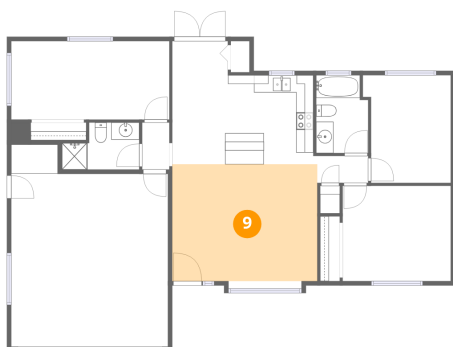
8 Floor 1 - Garage



Dimensions: 18'1" x 23'3"
Area: 379 sq. ft
Counted as living area: No

Heated: No
Finished: No
Enclosed: Yes
Contiguous: Yes
Permitted: Yes
Wet space: No
Addition: No
Conversion: No

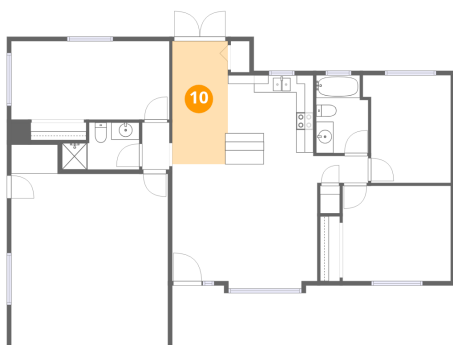
9 Floor 1 - Living Room



Dimensions: 16'9" x 13'6"
Area: 226 sq. ft
Counted as living area: Yes

Heated: Yes
Finished: Yes
Enclosed: Yes
Contiguous: Yes
Permitted: Yes
Wet space: No
Addition: No
Conversion: No

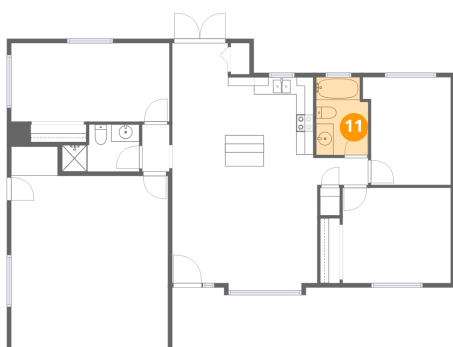
10 Floor 1 - Dining Area



Dimensions: 6'5" x 14'2"
Area: 90 sq. ft
Counted as living area: Yes

Heated: Yes
Finished: Yes
Enclosed: Yes
Contiguous: Yes
Permitted: Yes
Wet space: No
Addition: No
Conversion: No

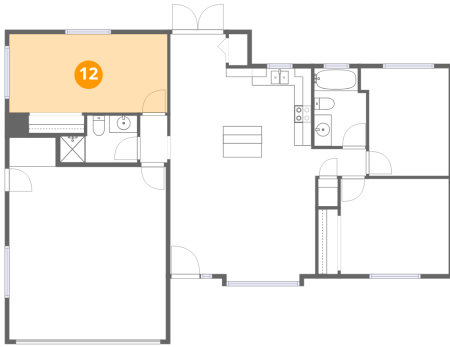
11 Floor 1 - Bath



Dimensions: 6'0" x 9'0"
Area: 51 sq. ft
Counted as living area: Yes

Heated: Yes
Finished: Yes
Enclosed: Yes
Contiguous: Yes
Permitted: Yes
Wet space: Yes
Addition: No
Conversion: No

12 Floor 1 - Primary Bedroom



Dimensions: 18'3" x 9'0"
Area: 165 sq. ft
Counted as living area: Yes

Heated: Yes
Finished: Yes
Enclosed: Yes
Contiguous: Yes
Permitted: Yes
Wet space: No
Addition: No
Conversion: No