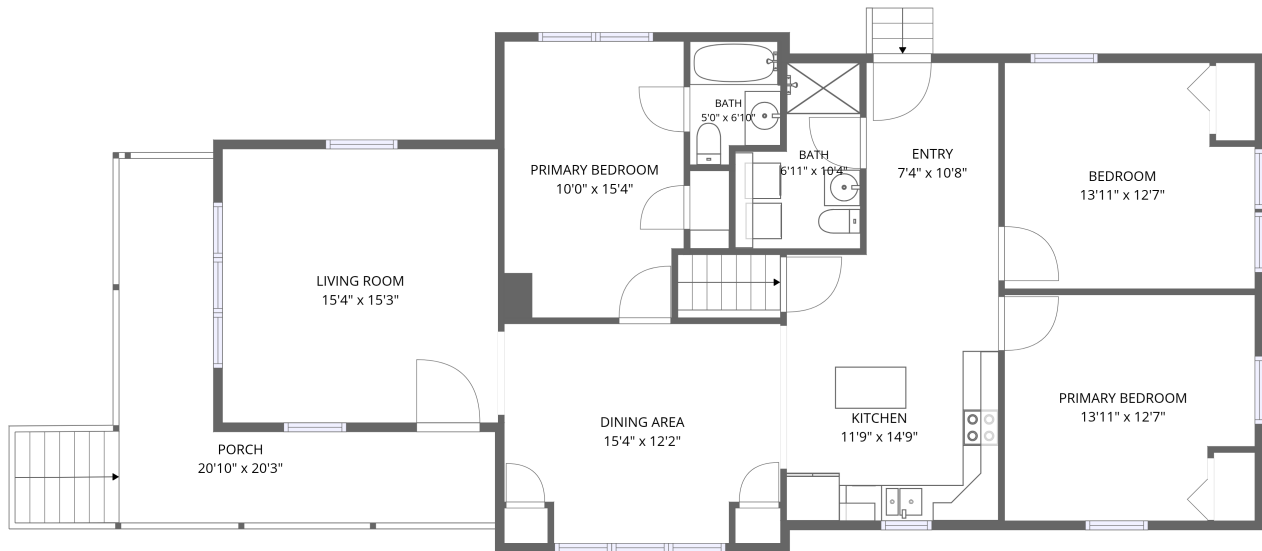


Home data report

880 S Tompkins St, Shelbyville, IN, US



1st floor

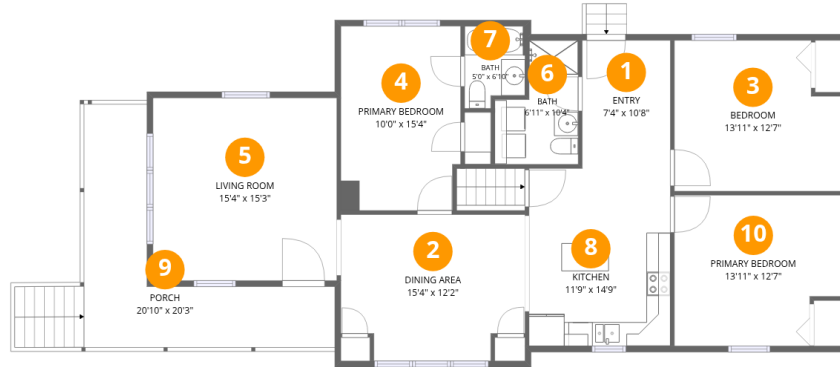
Total Area: 1338 sq. ft

1st Floor: 1338 sq. ft

Excluded: Porch 215 sq. ft, Walls: 85 sq. ft

Property summary





Room dimensions

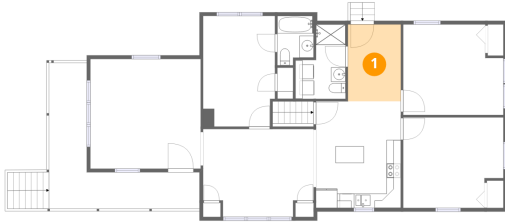
Floor 1

Total: 1338 sqft

Excluded: 215 sqft

#		Dimensions	sqft	Counted as living area
1	Entry	7'4" x 10'8"	78 sq. ft	Yes
2	Dining Area	15'4" x 12'2"	174 sq. ft	Yes
3	Bedroom	13'11" x 12'7"	163 sq. ft	Yes
4	Primary Bedroom	10'0" x 15'4"	151 sq. ft	Yes
5	Living Room	15'4" x 15'3"	233 sq. ft	Yes
6	Bath	6'11" x 10'4"	58 sq. ft	Yes
7	Bath	5'0" x 6'10"	31 sq. ft	Yes
8	Kitchen	11'9" x 14'9"	174 sq. ft	Yes
9	Porch	20'10" x 20'3"	215 sq. ft	No
10	Primary Bedroom	13'11" x 12'7"	164 sq. ft	Yes

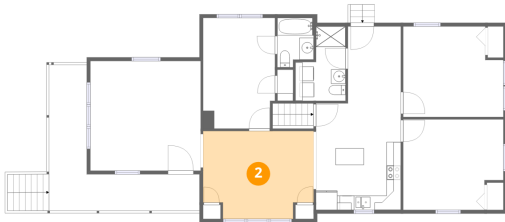
1 Floor 1 - Entry



Dimensions: 7'4" x 10'8"
Area: 78 sq. ft
Counted as living area: Yes

Heated: Yes
Finished: Yes
Enclosed: Yes
Contiguous: Yes
Permitted: Yes
Wet space: No
Addition: No
Conversion: No

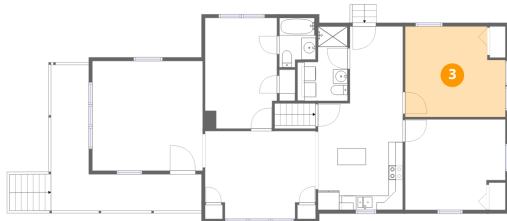
2 Floor 1 - Dining Area



Dimensions: 15'4" x 12'2"
Area: 174 sq. ft
Counted as living area: Yes

Heated: Yes
Finished: Yes
Enclosed: Yes
Contiguous: Yes
Permitted: Yes
Wet space: No
Addition: No
Conversion: No

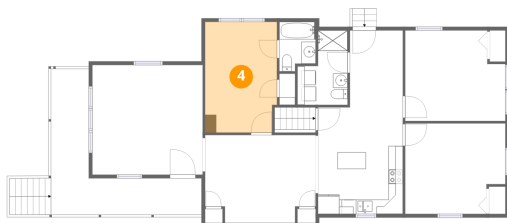
3 Floor 1 - Bedroom



Dimensions: 13'11" x 12'7"
Area: 163 sq. ft
Counted as living area: Yes

Heated: Yes
Finished: Yes
Enclosed: Yes
Contiguous: Yes
Permitted: Yes
Wet space: No
Addition: No
Conversion: No

4 Floor 1 - Primary Bedroom



Dimensions: 10'0" x 15'4"
Area: 151 sq. ft
Counted as living area: Yes

Heated: Yes
Finished: Yes
Enclosed: Yes
Contiguous: Yes
Permitted: Yes
Wet space: No
Addition: No
Conversion: No

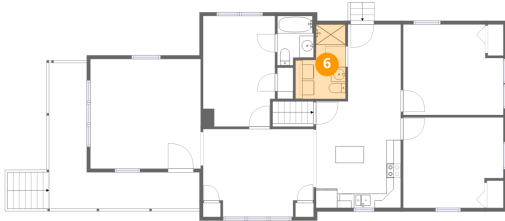
5 Floor 1 - Living Room



Dimensions: 15'4" x 15'3"
Area: 233 sq. ft
Counted as living area: Yes

Heated: Yes
Finished: Yes
Enclosed: Yes
Contiguous: Yes
Permitted: Yes
Wet space: No
Addition: No
Conversion: No

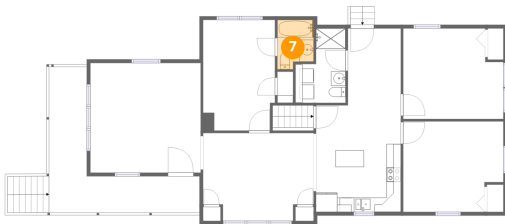
6 Floor 1 - Bath



Dimensions: 6'11" x 10'4"
Area: 58 sq. ft
Counted as living area: Yes

Heated: Yes
Finished: Yes
Enclosed: Yes
Contiguous: Yes
Permitted: Yes
Wet space: Yes
Addition: No
Conversion: No

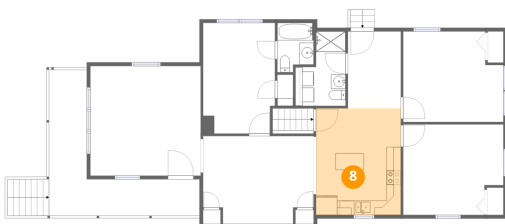
7 Floor 1 - Bath



Dimensions: 5'0" x 6'10"
Area: 31 sq. ft
Counted as living area: Yes

Heated: Yes
Finished: Yes
Enclosed: Yes
Contiguous: Yes
Permitted: Yes
Wet space: Yes
Addition: No
Conversion: No

8 Floor 1 - Kitchen



Dimensions: 11'9" x 14'9"
Area: 174 sq. ft
Counted as living area: Yes

Heated: Yes
Finished: Yes
Enclosed: Yes
Contiguous: Yes
Permitted: Yes
Wet space: No
Addition: No
Conversion: No

9 Floor 1 - Porch



Dimensions: 20'10" x 20'3"
Area: 215 sq. ft
Counted as living area: No

Heated: No
Finished: No
Enclosed: No
Contiguous: Yes
Permitted: Yes
Wet space: No
Addition: No
Conversion: No

10 Floor 1 - Primary Bedroom



Dimensions: 13'11" x 12'7"
Area: 164 sq. ft
Counted as living area: Yes

Heated: Yes
Finished: Yes
Enclosed: Yes
Contiguous: Yes
Permitted: Yes
Wet space: No
Addition: No
Conversion: No