

## Home data report

**5733 Sierra Drive Northwest, Boxley Hill, Hollins, Roanoke,  
Roanoke County, Virginia, United States, 24012**



**Total Area: 1452 sq. ft**

1st Floor: 379 sq. ft, 2nd Floor: 506 sq. ft, 3rd Floor: 567 sq. ft

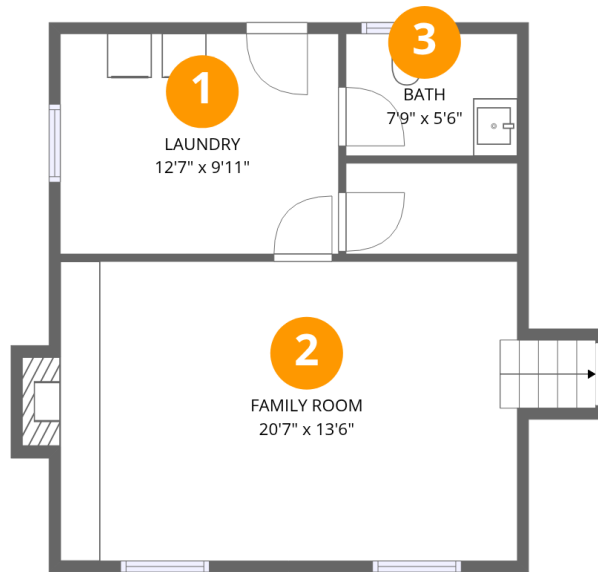
Excluded: Laundry 125 sq. ft, Fireplace 9 sq. ft, Deck 330 sq. ft, Embedded window 10 sq. ft, Walls: 145 sq. ft

## Property summary



## Home data report

**5733 Sierra Drive Northwest, Boxley Hill, Hollins, Roanoke,  
Roanoke County, Virginia, United States, 24012**



## Room dimensions

Floor 1

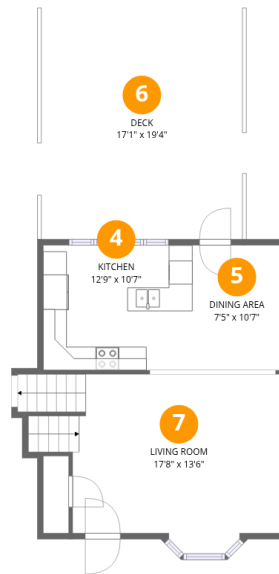
Total:379sqft

Excluded: 134sqft

#		Dimensions	sqft	Counted as living area
1	Laundry	12'7" x 9'11"	125 sq. ft	No
2	Family Room	20'7" x 13'6"	297 sq. ft	Yes
3	Bath	7'9" x 5'6"	43 sq. ft	Yes

## Home data report

**5733 Sierra Drive Northwest, Boxley Hill, Hollins, Roanoke,  
Roanoke County, Virginia, United States, 24012**



## Room dimensions

Floor 2

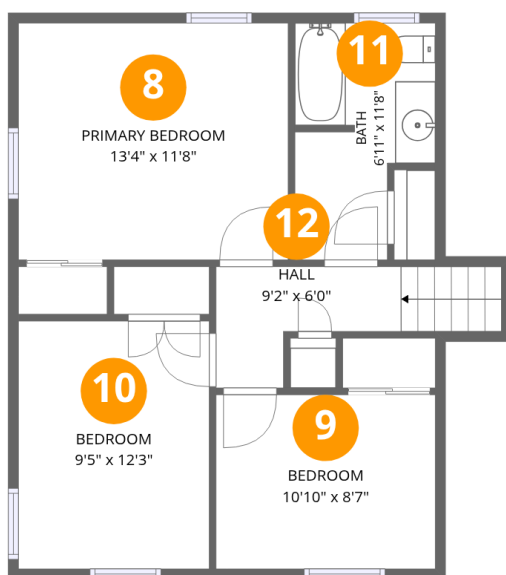
Total:506sqft

Excluded: 340sqft

#		Dimensions	sqft	Counted as living area
4	Kitchen	12'9" x 10'7"	135 sq. ft	Yes
5	Dining Area	7'5" x 10'7"	79 sq. ft	Yes
6	Deck	17'1" x 19'4"	330 sq. ft	No
7	Living Room	17'8" x 13'6"	265 sq. ft	Yes

## Home data report

5733 Sierra Drive Northwest, Boxley Hill, Hollins, Roanoke,  
Roanoke County, Virginia, United States, 24012



## Room dimensions

Floor 3

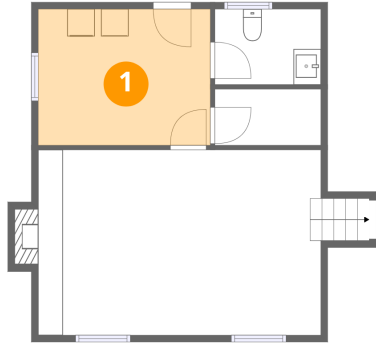
Total:567sqft Excluded: 0sqft

#		Dimensions	sqft	Counted as living area
8	Primary Bedroom	13'4" x 11'8"	156 sq. ft	Yes
9	Bedroom	10'10" x 8'7"	93 sq. ft	Yes
10	Bedroom	9'5" x 12'3"	116 sq. ft	Yes
11	Bath	6'11" x 11'8"	69 sq. ft	Yes
12	Hall	9'2" x 6'0"	55 sq. ft	Yes

5733 Sierra Drive Northwest, Boxley Hill, Hollins, Roanoke,  
Roanoke County, Virginia, United States, 24012

**1** Floor 1 - Laundry

---



Dimensions: 12'7" x 9'11"  
Area: 125 sq. ft  
Counted as living area: No

Heated: Yes  
Finished: No  
Enclosed: Yes  
Contiguous: Yes  
Permitted: Yes  
Wet space: No  
Addition: No  
Conversion: No

**2** Floor 1 - Family Room

---

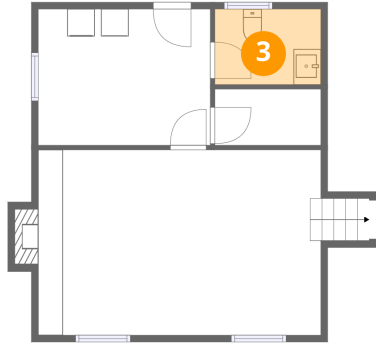


Dimensions: 20'7" x 13'6"  
Area: 297 sq. ft  
Counted as living area: Yes

Heated: Yes  
Finished: Yes  
Enclosed: Yes  
Contiguous: Yes  
Permitted: Yes  
Wet space: No  
Addition: No  
Conversion: No

5733 Sierra Drive Northwest, Boxley Hill, Hollins, Roanoke,  
Roanoke County, Virginia, United States, 24012

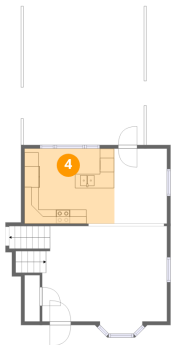
**3** Floor 1 - Bath



Dimensions: 7'9" x 5'6"  
Area: 43 sq. ft  
Counted as living area: No

Heated: Yes  
Finished: Yes  
Enclosed: Yes  
Contiguous: No  
Permitted: Yes  
Wet space: Yes  
Addition: No  
Conversion: No

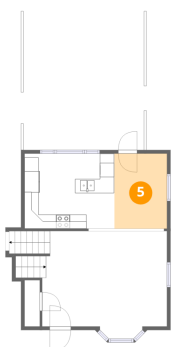
**4** Floor 2 - Kitchen



Dimensions: 12'9" x 10'7"  
Area: 135 sq. ft  
Counted as living area: Yes

Heated: Yes  
Finished: Yes  
Enclosed: Yes  
Contiguous: Yes  
Permitted: Yes  
Wet space: No  
Addition: No  
Conversion: No

**5** Floor 2 - Dining Area

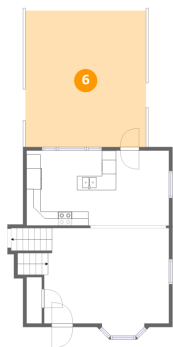


Dimensions: 7'5" x 10'7"  
Area: 79 sq. ft  
Counted as living area: Yes

Heated: Yes  
Finished: Yes  
Enclosed: Yes  
Contiguous: Yes  
Permitted: Yes  
Wet space: No  
Addition: No  
Conversion: No

5733 Sierra Drive Northwest, Boxley Hill, Hollins, Roanoke,  
Roanoke County, Virginia, United States, 24012

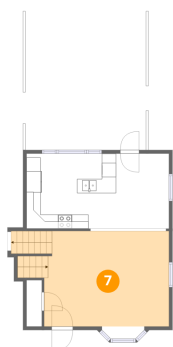
**6** Floor 2 - Deck



Dimensions: 17'1" x 19'4"  
Area: 330 sq. ft  
Counted as living area: No

Heated: No  
Finished: No  
Enclosed: No  
Contiguous: Yes  
Permitted: Yes  
Wet space: No  
Addition: No  
Conversion: No

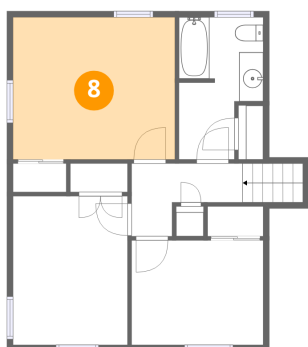
**7** Floor 2 - Living Room



Dimensions: 17'8" x 13'6"  
Area: 265 sq. ft  
Counted as living area: Yes

Heated: Yes  
Finished: Yes  
Enclosed: Yes  
Contiguous: Yes  
Permitted: Yes  
Wet space: No  
Addition: No  
Conversion: No

**8** Floor 3 - Primary Bedroom

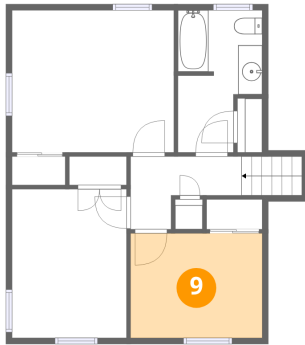


Dimensions: 13'4" x 11'8"  
Area: 156 sq. ft  
Counted as living area: Yes

Heated: Yes  
Finished: Yes  
Enclosed: Yes  
Contiguous: Yes  
Permitted: Yes  
Wet space: No  
Addition: No  
Conversion: No

5733 Sierra Drive Northwest, Boxley Hill, Hollins, Roanoke,  
Roanoke County, Virginia, United States, 24012

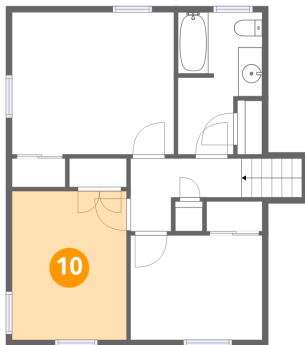
**9** Floor 3 - Bedroom



Dimensions: 10'10" x 8'7"  
Area: 93 sq. ft  
Counted as living area: Yes

Heated: Yes  
Finished: Yes  
Enclosed: Yes  
Contiguous: Yes  
Permitted: Yes  
Wet space: No  
Addition: No  
Conversion: No

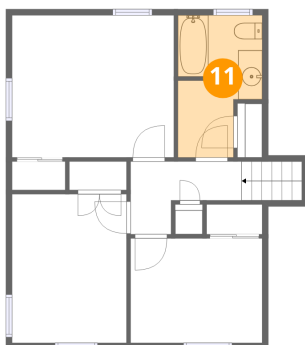
**10** Floor 3 - Bedroom



Dimensions: 9'5" x 12'3"  
Area: 116 sq. ft  
Counted as living area: Yes

Heated: Yes  
Finished: Yes  
Enclosed: Yes  
Contiguous: Yes  
Permitted: Yes  
Wet space: No  
Addition: No  
Conversion: No

**11** Floor 3 - Bath



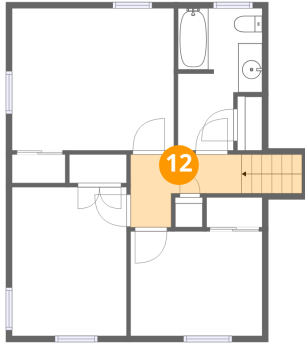
Dimensions: 6'11" x 11'8"  
Area: 69 sq. ft  
Counted as living area: Yes

Heated: Yes  
Finished: Yes  
Enclosed: Yes  
Contiguous: Yes  
Permitted: Yes  
Wet space: Yes  
Addition: No  
Conversion: No

**5733 Sierra Drive Northwest, Boxley Hill, Hollins, Roanoke,  
Roanoke County, Virginia, United States, 24012**

**12 Floor 3 - Hall**

---



Dimensions: 9'2" x 6'0"  
Area: 55 sq. ft  
Counted as living area: Yes

Heated: Yes  
Finished: Yes  
Enclosed: Yes  
Contiguous: Yes  
Permitted: Yes  
Wet space: No  
Addition: No  
Conversion: No