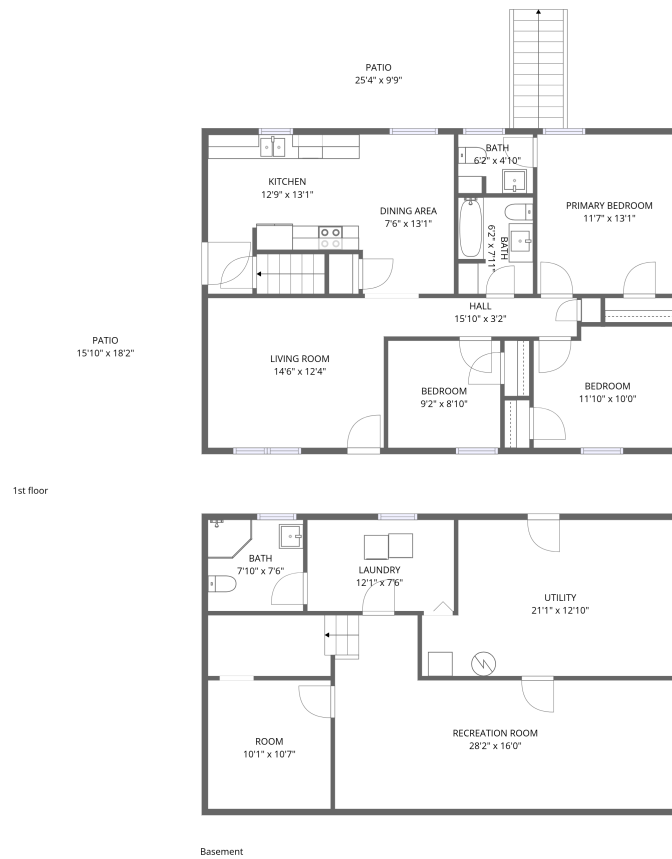


Home data report

52 Hillview Drive, Roanoke, Virginia 24019, United States



Total Area: 1667 sq. ft

Basement: 671 sq. ft, 1st Floor: 996 sq. ft

Excluded: Utility 247 sq. ft, Patio 499 sq. ft, Walls: 129 sq. ft

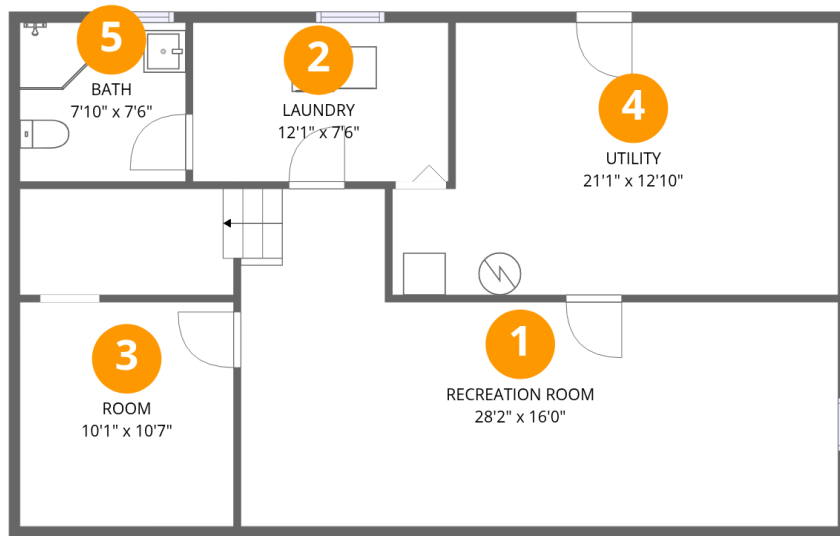
Property summary

 **2** Floors

 **3** Bedrooms

 **2** Bathrooms

 **1** Half baths



Room dimensions

Floor 1 Below grade

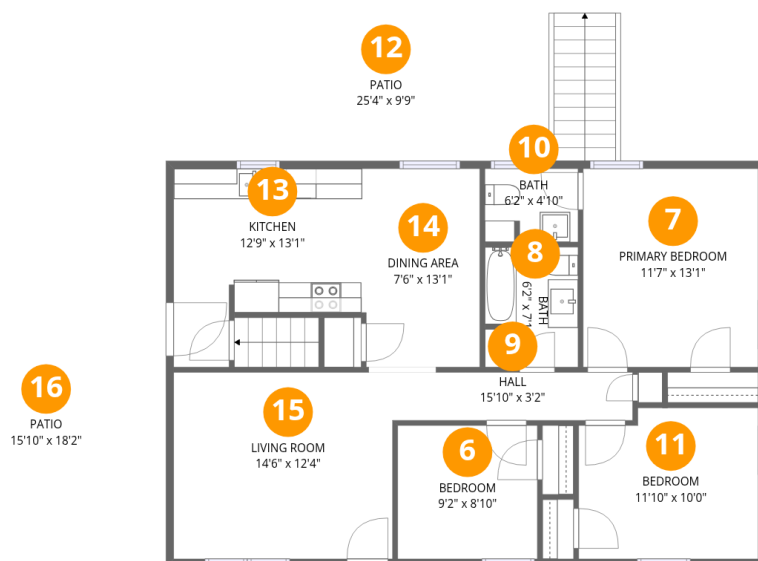
Total:671sqft

Excluded: 247sqft

#		Dimensions	sqft	Counted as living area
1	Recreation Room	28'2" x 16'0"	387 sq. ft	Yes
2	Laundry	12'1" x 7'6"	91 sq. ft	Yes
3	Room	10'1" x 10'7"	107 sq. ft	Yes
4	Utility	21'1" x 12'10"	247 sq. ft	No
5	Bath	7'10" x 7'6"	59 sq. ft	Yes

Home data report

52 Hillview Drive, Roanoke, Virginia 24019, United States



Room dimensions

Floor 2

Total:996sqft Excluded: 499sqft

#		Dimensions	sqft	Counted as living area
6	Bedroom	9'2" x 8'10"	81 sq. ft	Yes
7	Primary Bedroom	11'7" x 13'1"	152 sq. ft	Yes
8	Bath	6'2" x 7'11"	48 sq. ft	Yes
9	Hall	15'10" x 3'2"	50 sq. ft	Yes
10	Bath	6'2" x 4'10"	29 sq. ft	Yes
11	Bedroom	11'10" x 10'0"	114 sq. ft	Yes
12	Patio	25'4" x 9'9"	211 sq. ft	No
13	Kitchen	12'9" x 13'1"	134 sq. ft	Yes
14	Dining Area	7'6" x 13'1"	98 sq. ft	Yes
15	Living Room	14'6" x 12'4"	178 sq. ft	Yes
16	Patio	15'10" x 18'2"	288 sq. ft	No

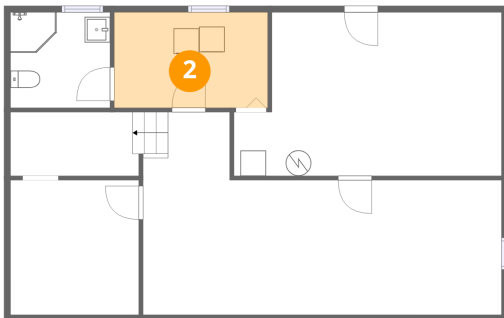
1 Floor 1 - Recreation Room



Dimensions: 28'2" x 16'0"
Area: 387 sq. ft
Counted as living area: Yes

Heated: Yes
Finished: Yes
Enclosed: Yes
Contiguous: Yes
Permitted: Yes
Wet space: No
Addition: No
Conversion: No

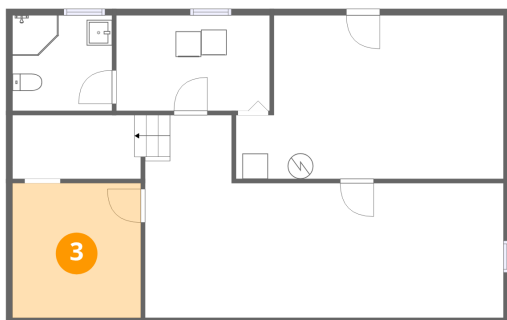
2 Floor 1 - Laundry



Dimensions: 12'1" x 7'6"
Area: 91 sq. ft
Counted as living area: Yes

Heated: Yes
Finished: Yes
Enclosed: Yes
Contiguous: Yes
Permitted: Yes
Wet space: No
Addition: No
Conversion: No

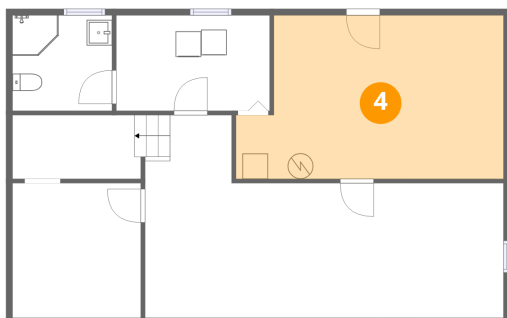
3 Floor 1 - Room



Dimensions: 10'1" x 10'7"
Area: 107 sq. ft
Counted as living area: Yes

Heated: Yes
Finished: Yes
Enclosed: Yes
Contiguous: Yes
Permitted: Yes
Wet space: No
Addition: No
Conversion: No

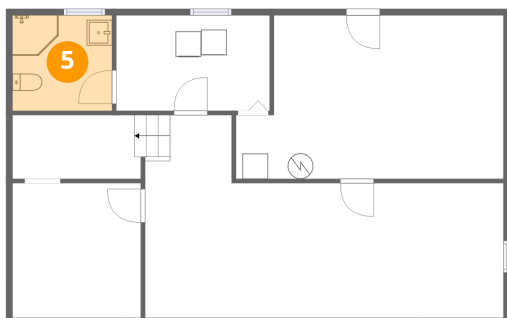
4 Floor 1 - Utility



Dimensions: 21'1" x 12'10"
Area: 247 sq. ft
Counted as living area: No

Heated: Yes
Finished: No
Enclosed: Yes
Contiguous: Yes
Permitted: Yes
Wet space: No
Addition: No
Conversion: No

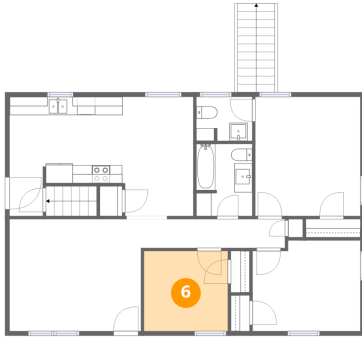
5 Floor 1 - Bath



Dimensions: 7'10" x 7'6"
Area: 59 sq. ft
Counted as living area: Yes

Heated: Yes
Finished: Yes
Enclosed: Yes
Contiguous: Yes
Permitted: Yes
Wet space: Yes
Addition: No
Conversion: No

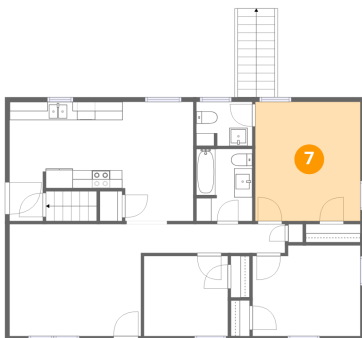
6 Floor 2 - Bedroom



Dimensions: 9'2" x 8'10"
Area: 81 sq. ft
Counted as living area: Yes

Heated: Yes
Finished: Yes
Enclosed: Yes
Contiguous: Yes
Permitted: Yes
Wet space: No
Addition: No
Conversion: No

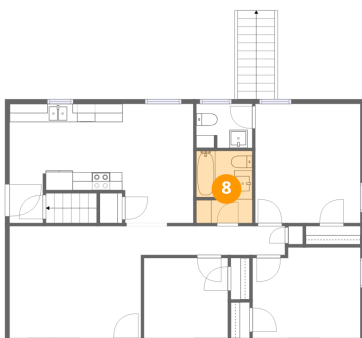
7 Floor 2 - Primary Bedroom



Dimensions: 11'7" x 13'1"
Area: 152 sq. ft
Counted as living area: Yes

Heated: Yes
Finished: Yes
Enclosed: Yes
Contiguous: Yes
Permitted: Yes
Wet space: No
Addition: No
Conversion: No

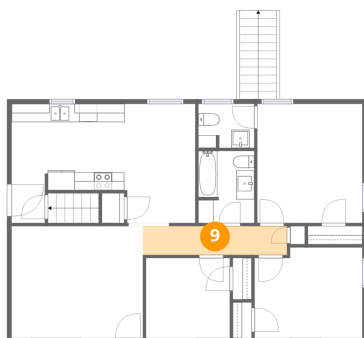
8 Floor 2 - Bath



Dimensions: 6'2" x 7'11"
Area: 48 sq. ft
Counted as living area: Yes

Heated: Yes
Finished: Yes
Enclosed: Yes
Contiguous: Yes
Permitted: Yes
Wet space: Yes
Addition: No
Conversion: No

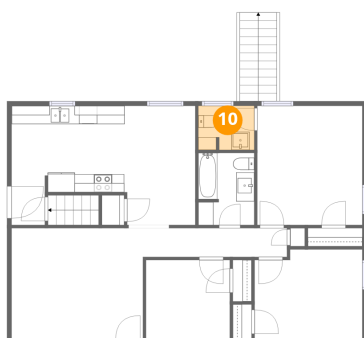
9 Floor 2 - Hall



Dimensions: 15'10" x 3'2"
Area: 50 sq. ft
Counted as living area: Yes

Heated: Yes
Finished: Yes
Enclosed: Yes
Contiguous: Yes
Permitted: Yes
Wet space: No
Addition: No
Conversion: No

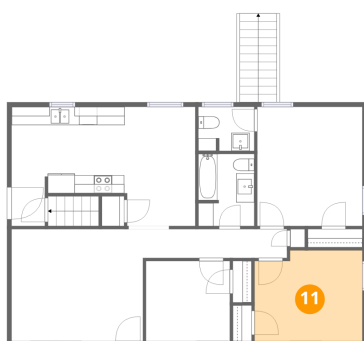
10 Floor 2 - Bath



Dimensions: 6'2" x 4'10"
Area: 29 sq. ft
Counted as living area: Yes

Heated: Yes
Finished: Yes
Enclosed: Yes
Contiguous: Yes
Permitted: Yes
Wet space: Yes
Addition: No
Conversion: No

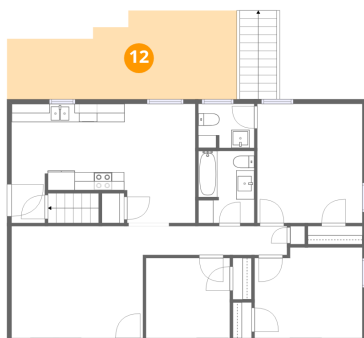
11 Floor 2 - Bedroom



Dimensions: 11'10" x 10'0"
Area: 114 sq. ft
Counted as living area: Yes

Heated: Yes
Finished: Yes
Enclosed: Yes
Contiguous: Yes
Permitted: Yes
Wet space: No
Addition: No
Conversion: No

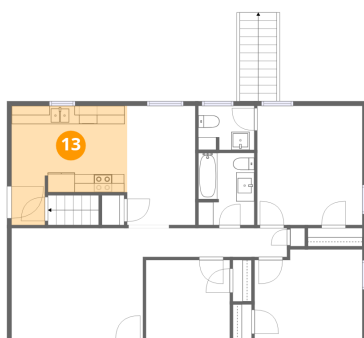
12 Floor 2 - Patio



Dimensions: 25'4" x 9'9"
Area: 211 sq. ft
Counted as living area: No

Heated: No
Finished: No
Enclosed: No
Contiguous: Yes
Permitted: Yes
Wet space: No
Addition: No
Conversion: No

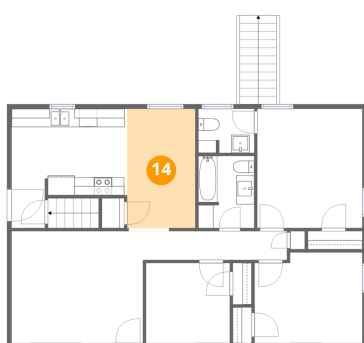
13 Floor 2 - Kitchen



Dimensions: 12'9" x 13'1"
Area: 134 sq. ft
Counted as living area: Yes

Heated: Yes
Finished: Yes
Enclosed: Yes
Contiguous: Yes
Permitted: Yes
Wet space: No
Addition: No
Conversion: No

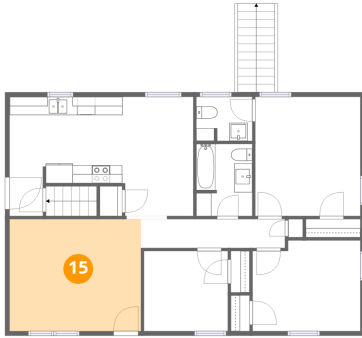
14 Floor 2 - Dining Area



Dimensions: 7'6" x 13'1"
Area: 98 sq. ft
Counted as living area: Yes

Heated: Yes
Finished: Yes
Enclosed: Yes
Contiguous: Yes
Permitted: Yes
Wet space: No
Addition: No
Conversion: No

15 Floor 2 - Living Room



Dimensions: 14'6" x 12'4"
Area: 178 sq. ft
Counted as living area: Yes

Heated: Yes
Finished: Yes
Enclosed: Yes
Contiguous: Yes
Permitted: Yes
Wet space: No
Addition: No
Conversion: No

16 Floor 2 - Patio



Dimensions: 15'10" x 18'2"
Area: 288 sq. ft
Counted as living area: No

Heated: No
Finished: No
Enclosed: No
Contiguous: Yes
Permitted: Yes
Wet space: No
Addition: No
Conversion: No