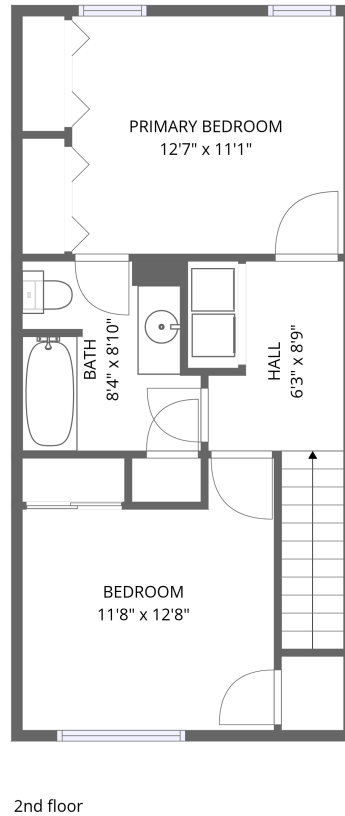
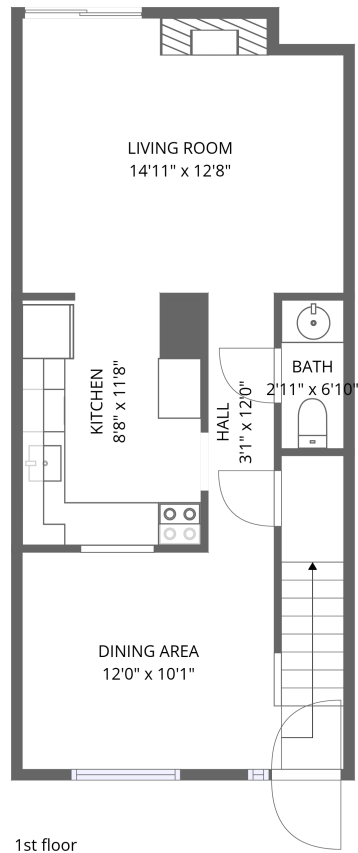


2924 Ross Dr,H-19,Fort Collins,CO,US, H-19

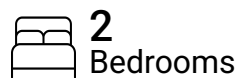


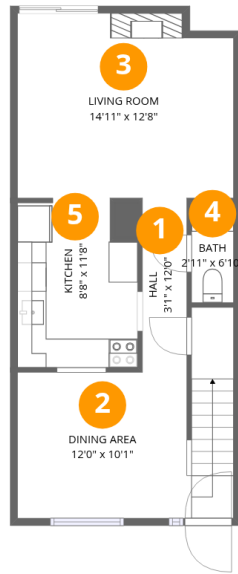
Total Area: 1010 sq. ft

1st Floor: 515 sq. ft, 2nd Floor: 495 sq. ft

Excluded: Walls: 65 sq. ft

Property summary



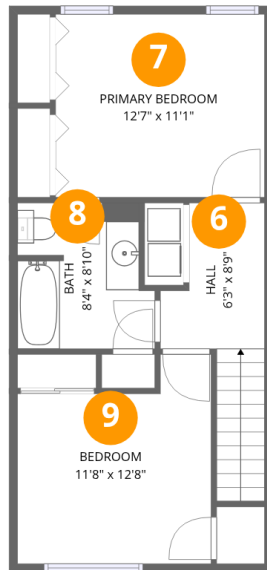


Room dimensions

Floor 1

Total:515sqft Excluded: 0sqft

#		Dimensions	sqft	Counted as living area
1	Hall	3'1" x 12'0"	37 sq. ft	Yes
2	Dining Area	12'0" x 10'1"	162 sq. ft	Yes
3	Living Room	14'11" x 12'8"	184 sq. ft	Yes
4	Bath	2'11" x 6'10"	20 sq. ft	Yes
5	Kitchen	8'8" x 11'8"	95 sq. ft	Yes



Room dimensions

Floor 2

Total:495sqft Excluded: 0sqft

#		Dimensions	sqft	Counted as living area
6	Hall	6'3" x 8'9"	73 sq. ft	Yes
7	Primary Bedroom	12'7" x 11'1"	139 sq. ft	Yes
8	Bath	8'4" x 8'10"	67 sq. ft	Yes
9	Bedroom	11'8" x 12'8"	127 sq. ft	Yes

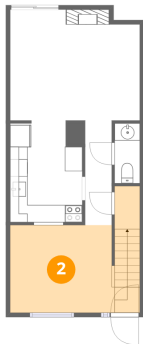
1 Floor 1 - Hall



Dimensions: 3'1" x 12'0"
Area: 37 sq. ft
Counted as living area: Yes

Heated: Yes
Finished: Yes
Enclosed: Yes
Contiguous: Yes
Permitted: Yes
Wet space: No
Addition: No
Conversion: No

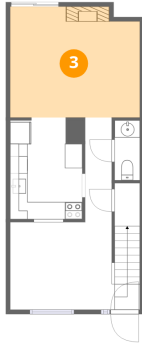
2 Floor 1 - Dining Area



Dimensions: 12'0" x 10'1"
Area: 162 sq. ft
Counted as living area: Yes

Heated: Yes
Finished: Yes
Enclosed: Yes
Contiguous: Yes
Permitted: Yes
Wet space: No
Addition: No
Conversion: No

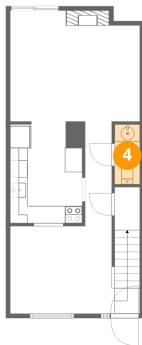
3 Floor 1 - Living Room



Dimensions: 14'11" x 12'8"
Area: 184 sq. ft
Counted as living area: Yes

Heated: Yes
Finished: Yes
Enclosed: Yes
Contiguous: Yes
Permitted: Yes
Wet space: No
Addition: No
Conversion: No

4 Floor 1 - Bath



Dimensions: 2'11" x 6'10"
Area: 20 sq. ft
Counted as living area: Yes

Heated: Yes
Finished: Yes
Enclosed: Yes
Contiguous: Yes
Permitted: Yes
Wet space: Yes
Addition: No
Conversion: No

5 Floor 1 - Kitchen



Dimensions: 8'8" x 11'8"
Area: 95 sq. ft
Counted as living area: Yes

Heated: Yes
Finished: Yes
Enclosed: Yes
Contiguous: Yes
Permitted: Yes
Wet space: No
Addition: No
Conversion: No

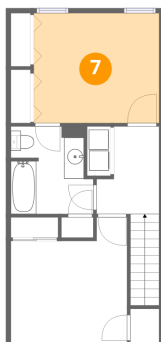
6 Floor 2 - Hall



Dimensions: 6'3" x 8'9"
Area: 73 sq. ft
Counted as living area: Yes

Heated: Yes
Finished: Yes
Enclosed: Yes
Contiguous: Yes
Permitted: Yes
Wet space: No
Addition: No
Conversion: No

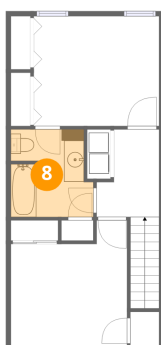
7 Floor 2 - Primary Bedroom



Dimensions: 12'7" x 11'1"
Area: 139 sq. ft
Counted as living area: Yes

Heated: Yes
Finished: Yes
Enclosed: Yes
Contiguous: Yes
Permitted: Yes
Wet space: No
Addition: No
Conversion: No

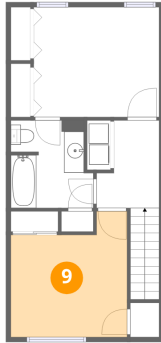
8 Floor 2 - Bath



Dimensions: 8'4" x 8'10"
Area: 67 sq. ft
Counted as living area: Yes

Heated: Yes
Finished: Yes
Enclosed: Yes
Contiguous: Yes
Permitted: Yes
Wet space: Yes
Addition: No
Conversion: No

9 Floor 2 - Bedroom



Dimensions: 11'8" x 12'8"
Area: 127 sq. ft
Counted as living area: Yes

Heated: Yes
Finished: Yes
Enclosed: Yes
Contiguous: Yes
Permitted: Yes
Wet space: No
Addition: No
Conversion: No