

Home data report

117 E North St, Winterset, IA, US



Total Area: 2318 sq. ft

Basement: 523 sq. ft, 1st Floor: 981 sq. ft, 2nd Floor: 814 sq. ft

Excluded: Utility 201 sq. ft, Storage 90 sq. ft, Porch 180 sq. ft, Walls: 189 sq. ft

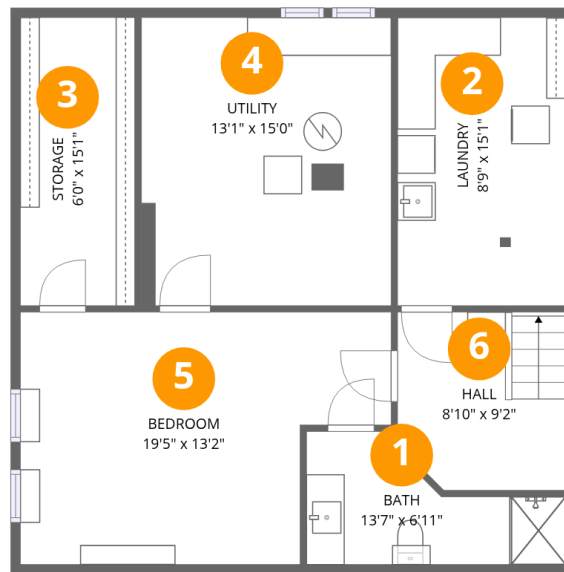
Property summary

 **3** Floors

 **6** Bedrooms

 **3** Bathrooms

117 E North St, Winterset, IA, US



Room dimensions

Floor 1 Below grade

Total: 523 sqft

Excluded: 291 sqft

#		Dimensions	sqft	Counted as living area
1	Bath	13'7" x 6'11"	94 sq. ft	Yes
2	Laundry	8'9" x 15'1"	132 sq. ft	Yes
3	Storage	6'0" x 15'1"	90 sq. ft	No
4	Utility	13'1" x 15'0"	196 sq. ft	No
5	Bedroom	19'5" x 13'2"	256 sq. ft	Yes
6	Hall	8'10" x 9'2"	81 sq. ft	Yes

Home data report

117 E North St, Winterset, IA, US



Room dimensions

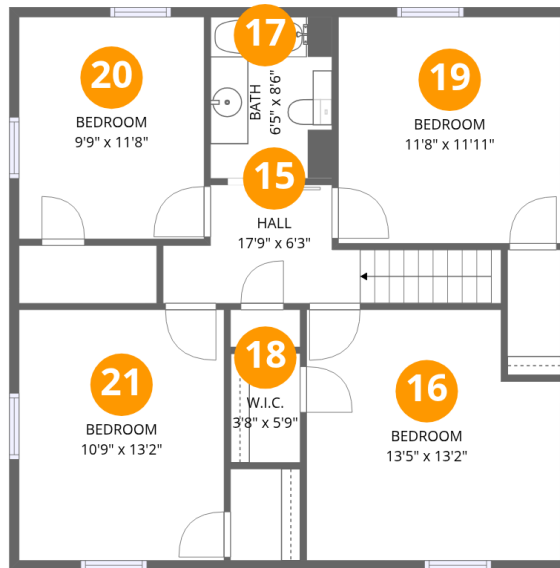
Floor 2

Total:981sqft

Excluded: 180sqft

#		Dimensions	sqft	Counted as living area
7	Dining Area	14'3" x 13'2"	188 sq. ft	Yes
8	Bedroom	12'2" x 13'4"	162 sq. ft	Yes
9	Bath	4'0" x 8'6"	34 sq. ft	Yes
10	Entry	7'11" x 3'2"	25 sq. ft	Yes
11	Kitchen	11'8" x 29'8"	347 sq. ft	Yes
12	Living Room	14'3" x 14'11"	212 sq. ft	Yes
13	Pantry	1'8" x 5'3"	9 sq. ft	Yes
14	Porch	24'6" x 7'4"	180 sq. ft	No

117 E North St, Winterset, IA, US



Room dimensions

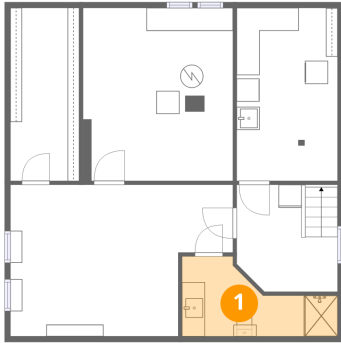
Floor 3

Total: 814 sqft

Excluded: 0 sqft

#		Dimensions	sqft	Counted as living area
15	Hall	17'9" x 6'3"	111 sq. ft	Yes
16	Bedroom	13'5" x 13'2"	176 sq. ft	Yes
17	Bath	6'5" x 8'6"	54 sq. ft	Yes
18	W.I.C.	3'8" x 5'9"	21 sq. ft	Yes
19	Bedroom	11'8" x 11'11"	139 sq. ft	Yes
20	Bedroom	9'9" x 11'8"	114 sq. ft	Yes
21	Bedroom	10'9" x 13'2"	142 sq. ft	Yes

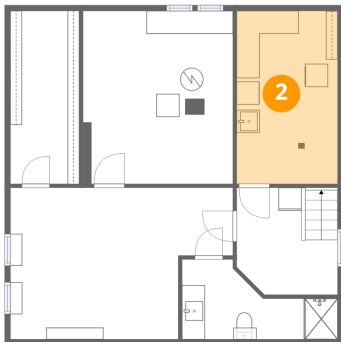
1 Floor 1 - Bath



Dimensions: 13'7" x 6'11"
Area: 94 sq. ft
Counted as living area: Yes

Heated: Yes
Finished: Yes
Enclosed: Yes
Contiguous: Yes
Permitted: Yes
Wet space: Yes
Addition: No
Conversion: No

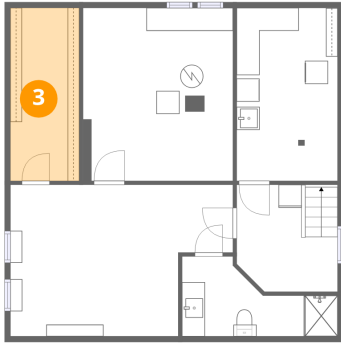
2 Floor 1 - Laundry



Dimensions: 8'9" x 15'1"
Area: 132 sq. ft
Counted as living area: Yes

Heated: Yes
Finished: Yes
Enclosed: Yes
Contiguous: Yes
Permitted: Yes
Wet space: No
Addition: No
Conversion: No

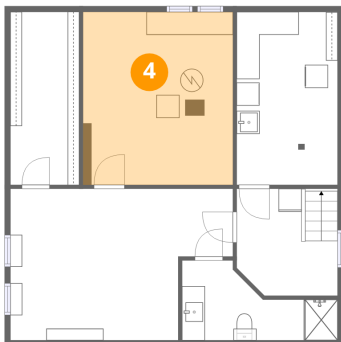
3 Floor 1 - Storage



Dimensions: 6'0" x 15'1"
Area: 90 sq. ft
Counted as living area: No

Heated: No
Finished: No
Enclosed: No
Contiguous: Yes
Permitted: Yes
Wet space: No
Addition: No
Conversion: No

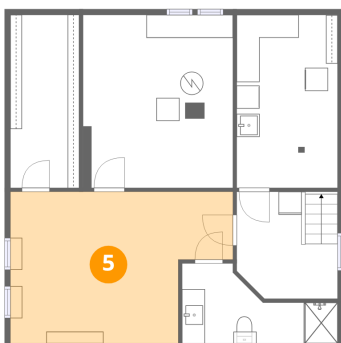
4 Floor 1 - Utility



Dimensions: 13'1" x 15'0"
Area: 196 sq. ft
Counted as living area: No

Heated: Yes
Finished: No
Enclosed: Yes
Contiguous: Yes
Permitted: Yes
Wet space: No
Addition: No
Conversion: No

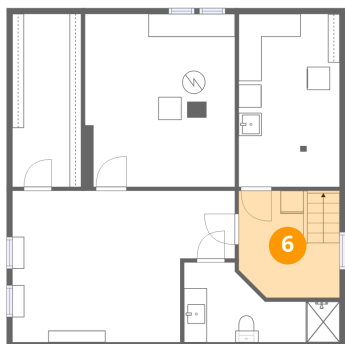
5 Floor 1 - Bedroom



Dimensions: 19'5" x 13'2"
Area: 256 sq. ft
Counted as living area: Yes

Heated: Yes
Finished: Yes
Enclosed: Yes
Contiguous: Yes
Permitted: Yes
Wet space: No
Addition: No
Conversion: No

6 Floor 1 - Hall



Dimensions: 8'10" x 9'2"
Area: 81 sq. ft
Counted as living area: Yes

Heated: Yes
Finished: Yes
Enclosed: Yes
Contiguous: Yes
Permitted: Yes
Wet space: No
Addition: No
Conversion: No

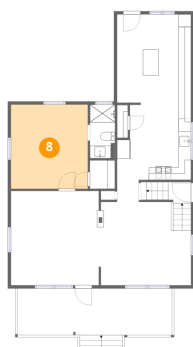
7 Floor 2 - Dining Area



Dimensions: 14'3" x 13'2"
Area: 188 sq. ft
Counted as living area: Yes

Heated: Yes
Finished: Yes
Enclosed: Yes
Contiguous: Yes
Permitted: Yes
Wet space: No
Addition: No
Conversion: No

8 Floor 2 - Bedroom



Dimensions: 12'2" x 13'4"
Area: 162 sq. ft
Counted as living area: Yes

Heated: Yes
Finished: Yes
Enclosed: Yes
Contiguous: Yes
Permitted: Yes
Wet space: No
Addition: No
Conversion: No

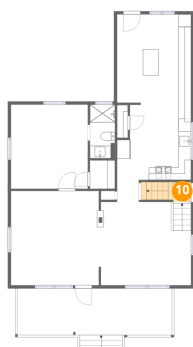
9 Floor 2 - Bath



Dimensions: 4'0" x 8'6"
Area: 34 sq. ft
Counted as living area: Yes

Heated: Yes
Finished: Yes
Enclosed: Yes
Contiguous: Yes
Permitted: Yes
Wet space: Yes
Addition: No
Conversion: No

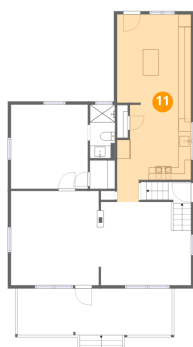
10 Floor 2 - Entry



Dimensions: 7'11" x 3'2"
Area: 25 sq. ft
Counted as living area: Yes

Heated: Yes
Finished: Yes
Enclosed: Yes
Contiguous: Yes
Permitted: Yes
Wet space: No
Addition: No
Conversion: No

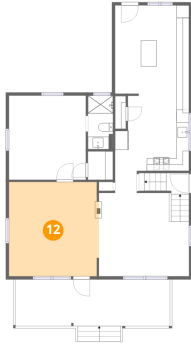
11 Floor 2 - Kitchen



Dimensions: 11'8" x 29'8"
Area: 347 sq. ft
Counted as living area: Yes

Heated: Yes
Finished: Yes
Enclosed: Yes
Contiguous: Yes
Permitted: Yes
Wet space: No
Addition: No
Conversion: No

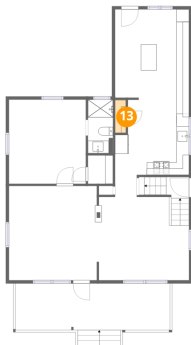
12 Floor 2 - Living Room



Dimensions: 14'3" x 14'11"
Area: 212 sq. ft
Counted as living area: Yes

Heated: Yes
Finished: Yes
Enclosed: Yes
Contiguous: Yes
Permitted: Yes
Wet space: No
Addition: No
Conversion: No

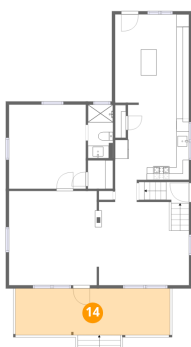
13 Floor 2 - Pantry



Dimensions: 1'8" x 5'3"
Area: 9 sq. ft
Counted as living area: Yes

Heated: Yes
Finished: Yes
Enclosed: Yes
Contiguous: Yes
Permitted: Yes
Wet space: No
Addition: No
Conversion: No

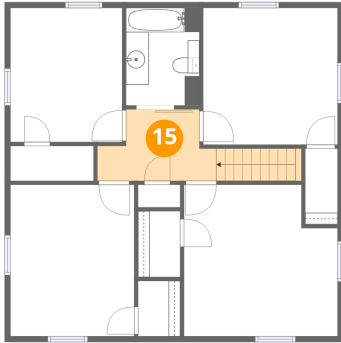
14 Floor 2 - Porch



Dimensions: 24'6" x 7'4"
Area: 180 sq. ft
Counted as living area: No

Heated: No
Finished: No
Enclosed: No
Contiguous: Yes
Permitted: Yes
Wet space: No
Addition: No
Conversion: No

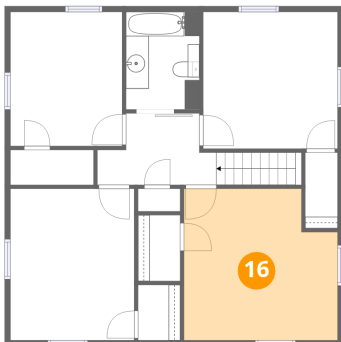
15 Floor 3 - Hall



Dimensions: 17'9" x 6'3"
Area: 111 sq. ft
Counted as living area: Yes

Heated: Yes
Finished: Yes
Enclosed: Yes
Contiguous: Yes
Permitted: Yes
Wet space: No
Addition: No
Conversion: No

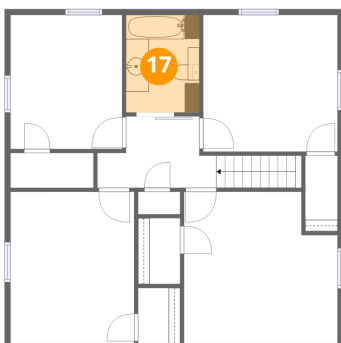
16 Floor 3 - Bedroom



Dimensions: 13'5" x 13'2"
Area: 176 sq. ft
Counted as living area: Yes

Heated: Yes
Finished: Yes
Enclosed: Yes
Contiguous: Yes
Permitted: Yes
Wet space: No
Addition: No
Conversion: No

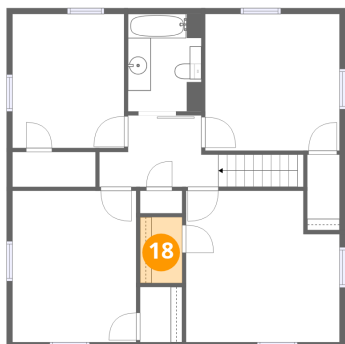
17 Floor 3 - Bath



Dimensions: 6'5" x 8'6"
Area: 54 sq. ft
Counted as living area: Yes

Heated: Yes
Finished: Yes
Enclosed: Yes
Contiguous: Yes
Permitted: Yes
Wet space: Yes
Addition: No
Conversion: No

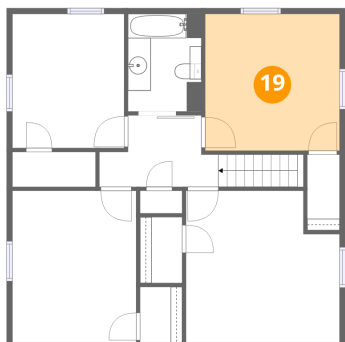
18 Floor 3 - W.I.C.



Dimensions: 3'8" x 5'9"
Area: 21 sq. ft
Counted as living area: Yes

Heated: Yes
Finished: Yes
Enclosed: Yes
Contiguous: Yes
Permitted: Yes
Wet space: No
Addition: No
Conversion: No

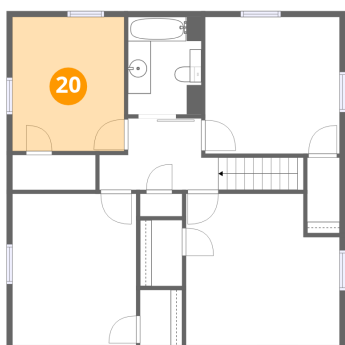
19 Floor 3 - Bedroom



Dimensions: 11'8" x 11'11"
Area: 139 sq. ft
Counted as living area: Yes

Heated: Yes
Finished: Yes
Enclosed: Yes
Contiguous: Yes
Permitted: Yes
Wet space: No
Addition: No
Conversion: No

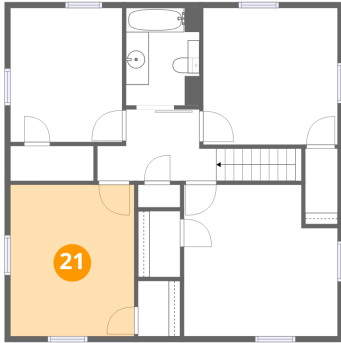
20 Floor 3 - Bedroom



Dimensions: 9'9" x 11'8"
Area: 114 sq. ft
Counted as living area: Yes

Heated: Yes
Finished: Yes
Enclosed: Yes
Contiguous: Yes
Permitted: Yes
Wet space: No
Addition: No
Conversion: No

21 Floor 3 - Bedroom



Dimensions: 10'9" x 13'2"
Area: 142 sq. ft
Counted as living area: Yes

Heated: Yes
Finished: Yes
Enclosed: Yes
Contiguous: Yes
Permitted: Yes
Wet space: No
Addition: No
Conversion: No