

Home data report

2519 Imgrund Road, North Aurora, Kane County, Illinois, United States, 60542



Total Area: 2252 sq. ft

Basement: 0 sq. ft, 1st Floor: 2252 sq. ft

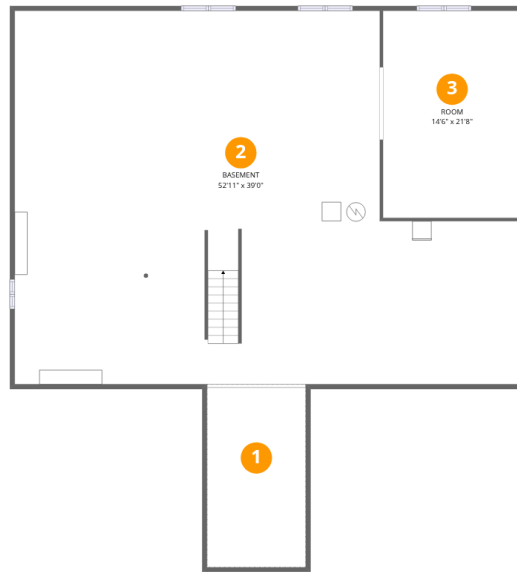
Excluded: Room 325 sq. ft, Basement 1743 sq. ft, Low ceiling 198 sq. ft, Garage 449 sq. ft, Stairwell 33 sq. ft, Fireplace 17 sq. ft, Walls: 243 sq. ft

Property summary



Home data report

2519 Imgrund Road, North Aurora, Kane County, Illinois, United States, 60542



Room dimensions

Floor 1 Below grade

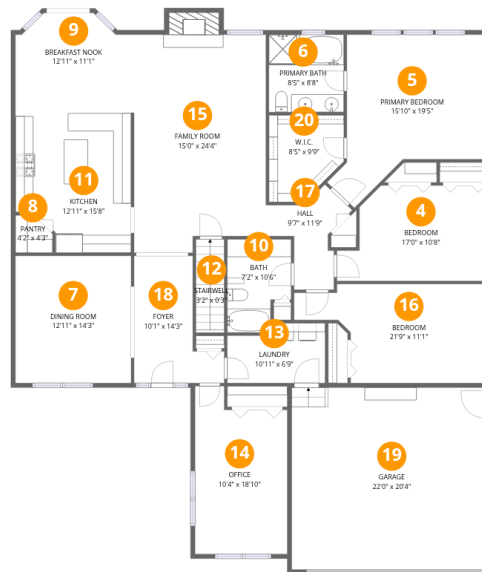
Total:0sqft

Excluded: 2266sqft

#		Dimensions	sqft	Counted as living area
1	Crawl Space	10'4" x 18'10"	193 sq. ft	No
2	Basement	52'11" x 39'0"	2065 sq. ft	No
3	Room	14'6" x 21'8"	313 sq. ft	No

Home data report

2519 Imgrund Road, North Aurora, Kane County, Illinois, United States, 60542



Room dimensions

Floor 2

Total:2252sqft

Excluded: 499sqft

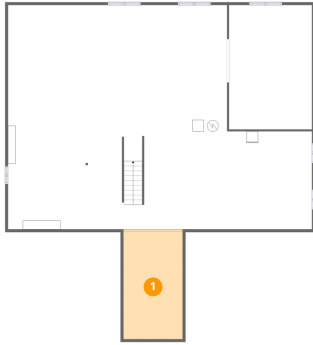
#		Dimensions	sqft	Counted as living area
4	Bedroom	17'0" x 10'8"	182 sq. ft	Yes
5	Primary Bedroom	15'10" x 19'5"	307 sq. ft	Yes
6	Primary Bath	8'5" x 8'8"	73 sq. ft	Yes
7	Dining Room	12'11" x 14'3"	184 sq. ft	Yes
8	Pantry	4'2" x 4'3"	17 sq. ft	Yes
9	Breakfast Nook	12'11" x 11'1"	143 sq. ft	Yes
10	Bath	7'2" x 10'6"	75 sq. ft	Yes
11	Kitchen	12'11" x 15'8"	203 sq. ft	Yes
12	Stairwell	3'2" x 0'3"	1 sq. ft	No
13	Laundry	10'11" x 6'9"	74 sq. ft	Yes
14	Office	10'4" x 18'10"	194 sq. ft	Yes

Home data report

2519 Imgrund Road, North Aurora, Kane County, Illinois, United States, 60542

#		Dimensions	sqft	Counted as living area
15	Family Room	15'0" x 24'4"	366 sq. ft	Yes
16	Bedroom	21'9" x 11'1"	241 sq. ft	Yes
17	Hall	9'7" x 11'9"	113 sq. ft	Yes
18	Foyer	10'1" x 14'3"	144 sq. ft	Yes
19	Garage	22'0" x 20'4"	448 sq. ft	No
20	W.I.C.	8'5" x 9'9"	82 sq. ft	Yes

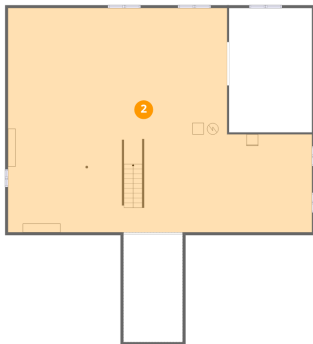
1 Floor 1 - Crawl Space



Dimensions: 10'4" x 18'10"
Area: 193 sq. ft
Counted as living area: No

Heated: No
Finished: No
Enclosed: No
Contiguous: Yes
Permitted: No
Wet space: No
Addition: No
Conversion: No

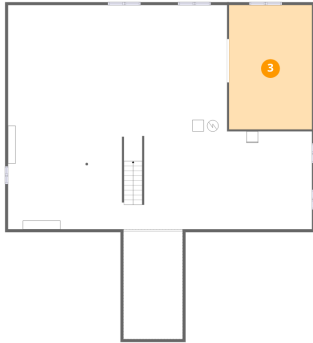
2 Floor 1 - Basement



Dimensions: 52'11" x 39'0"
Area: 2065 sq. ft
Counted as living area: No

Heated: Yes
Finished: No
Enclosed: Yes
Contiguous: Yes
Permitted: Yes
Wet space: No
Addition: No
Conversion: No

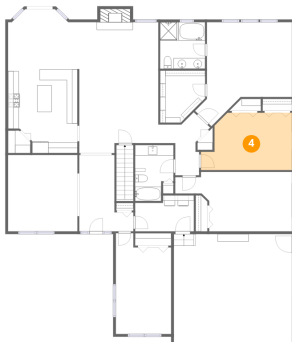
3 Floor 1 - Room



Dimensions: 14'6" x 21'8"
Area: 313 sq. ft
Counted as living area: No

Heated: Yes
Finished: No
Enclosed: Yes
Contiguous: Yes
Permitted: Yes
Wet space: No
Addition: No
Conversion: No

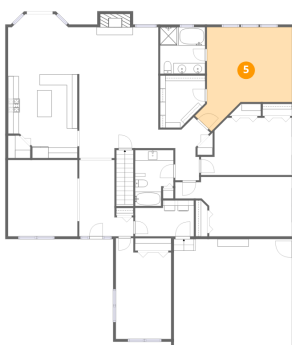
4 Floor 2 - Bedroom



Dimensions: 17'0" x 10'8"
Area: 182 sq. ft
Counted as living area: Yes

Heated: Yes
Finished: Yes
Enclosed: Yes
Contiguous: Yes
Permitted: Yes
Wet space: No
Addition: No
Conversion: No

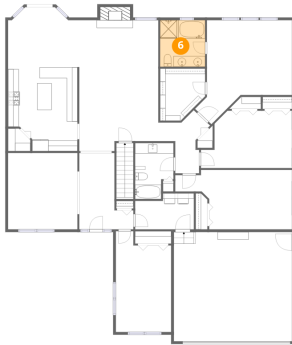
5 Floor 2 - Primary Bedroom



Dimensions: 15'10" x 19'5"
Area: 307 sq. ft
Counted as living area: Yes

Heated: Yes
Finished: Yes
Enclosed: Yes
Contiguous: Yes
Permitted: Yes
Wet space: No
Addition: No
Conversion: No

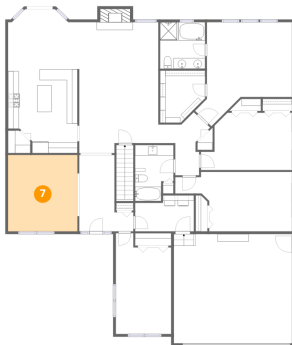
6 Floor 2 - Primary Bath



Dimensions: 8'5" x 8'8"
Area: 73 sq. ft
Counted as living area: Yes

Heated: Yes
Finished: Yes
Enclosed: Yes
Contiguous: Yes
Permitted: Yes
Wet space: Yes
Addition: No
Conversion: No

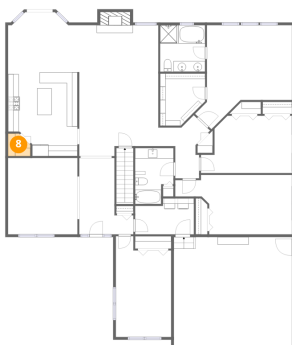
7 Floor 2 - Dining Room



Dimensions: 12'11" x 14'3"
Area: 184 sq. ft
Counted as living area: Yes

Heated: Yes
Finished: Yes
Enclosed: Yes
Contiguous: Yes
Permitted: Yes
Wet space: No
Addition: No
Conversion: No

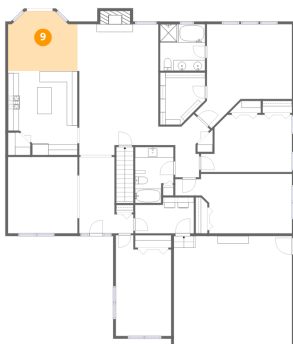
8 Floor 2 - Pantry



Dimensions: 4'2" x 4'3"
Area: 17 sq. ft
Counted as living area: Yes

Heated: Yes
Finished: Yes
Enclosed: Yes
Contiguous: Yes
Permitted: Yes
Wet space: No
Addition: No
Conversion: No

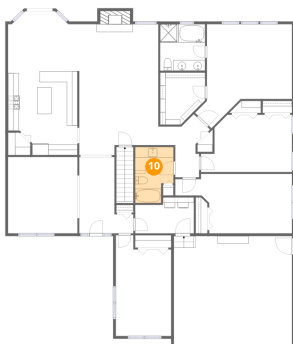
9 Floor 2 - Breakfast Nook



Dimensions: 12'11" x 11'1"
Area: 143 sq. ft
Counted as living area: Yes

Heated: Yes
Finished: Yes
Enclosed: Yes
Contiguous: Yes
Permitted: Yes
Wet space: No
Addition: No
Conversion: No

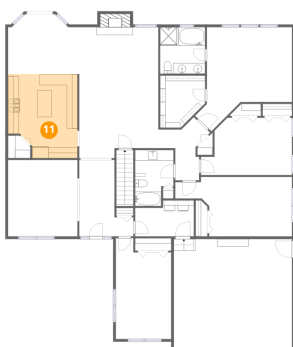
10 Floor 2 - Bath



Dimensions: 7'2" x 10'6"
Area: 75 sq. ft
Counted as living area: Yes

Heated: Yes
Finished: Yes
Enclosed: Yes
Contiguous: Yes
Permitted: Yes
Wet space: Yes
Addition: No
Conversion: No

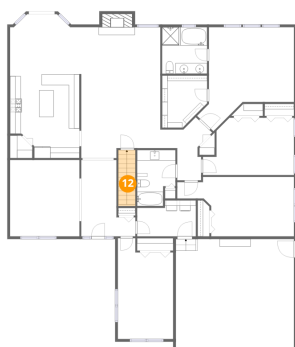
11 Floor 2 - Kitchen



Dimensions: 12'11" x 15'8"
Area: 203 sq. ft
Counted as living area: Yes

Heated: Yes
Finished: Yes
Enclosed: Yes
Contiguous: Yes
Permitted: Yes
Wet space: No
Addition: No
Conversion: No

12 Floor 2 - Stairwell



Dimensions: 3'2" x 0'3"
Area: 1 sq. ft
Counted as living area: No

Heated: No
Finished: No
Enclosed: No
Contiguous: Yes
Permitted: No
Wet space: No
Addition: No
Conversion: No

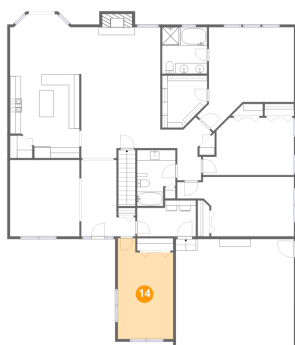
13 Floor 2 - Laundry



Dimensions: 10'11" x 6'9"
Area: 74 sq. ft
Counted as living area: Yes

Heated: Yes
Finished: Yes
Enclosed: Yes
Contiguous: Yes
Permitted: Yes
Wet space: No
Addition: No
Conversion: No

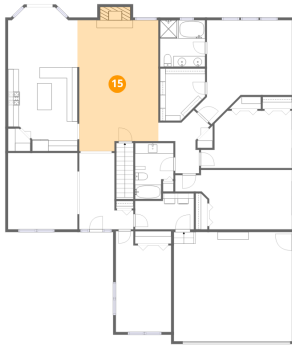
14 Floor 2 - Office



Dimensions: 10'4" x 18'10"
Area: 194 sq. ft
Counted as living area: Yes

Heated: Yes
Finished: Yes
Enclosed: Yes
Contiguous: Yes
Permitted: Yes
Wet space: No
Addition: No
Conversion: No

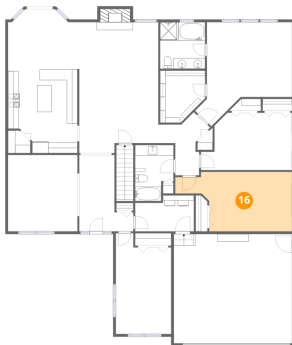
15 Floor 2 - Family Room



Dimensions: 15'0" x 24'4"
Area: 366 sq. ft
Counted as living area: Yes

Heated: Yes
Finished: Yes
Enclosed: Yes
Contiguous: Yes
Permitted: Yes
Wet space: No
Addition: No
Conversion: No

16 Floor 2 - Bedroom



Dimensions: 21'9" x 11'1"
Area: 241 sq. ft
Counted as living area: Yes

Heated: Yes
Finished: Yes
Enclosed: Yes
Contiguous: Yes
Permitted: Yes
Wet space: No
Addition: No
Conversion: No

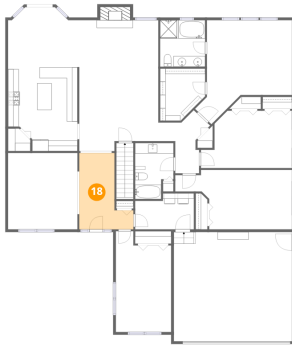
17 Floor 2 - Hall



Dimensions: 9'7" x 11'9"
Area: 113 sq. ft
Counted as living area: Yes

Heated: Yes
Finished: Yes
Enclosed: Yes
Contiguous: Yes
Permitted: Yes
Wet space: No
Addition: No
Conversion: No

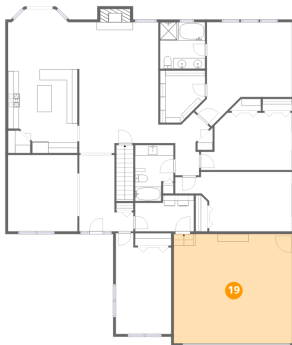
18 Floor 2 - Foyer



Dimensions: 10'1" x 14'3"
Area: 144 sq. ft
Counted as living area: Yes

Heated: Yes
Finished: Yes
Enclosed: Yes
Contiguous: Yes
Permitted: Yes
Wet space: No
Addition: No
Conversion: No

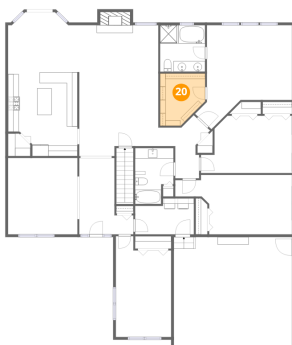
19 Floor 2 - Garage



Dimensions: 22'0" x 20'4"
Area: 448 sq. ft
Counted as living area: No

Heated: No
Finished: No
Enclosed: Yes
Contiguous: Yes
Permitted: Yes
Wet space: No
Addition: No
Conversion: No

20 Floor 2 - W.I.C.



Dimensions: 8'5" x 9'9"
Area: 82 sq. ft
Counted as living area: Yes

Heated: Yes
Finished: Yes
Enclosed: Yes
Contiguous: Yes
Permitted: Yes
Wet space: No
Addition: No
Conversion: No