

Home data report

1610 Heather Drive, Edgelawn Randall, Aurora, Kane County, Illinois, United States, 60506



Total Area: 2369 sq. ft

1st Floor: 978 sq. ft, 2nd Floor: 240 sq. ft, 3rd Floor: 1151 sq. ft

Excluded: Utility 85 sq. ft, Garage 384 sq. ft, Screened porch 180 sq. ft, Walls: 227 sq. ft

Property summary

3 Floors

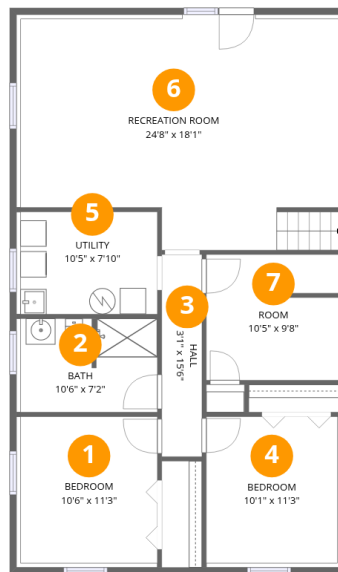
5 Bedrooms

3 Bathrooms

1 Garages

Home data report

1610 Heather Drive, Edgelawn Randall, Aurora, Kane County, Illinois, United States, 60506



Room dimensions

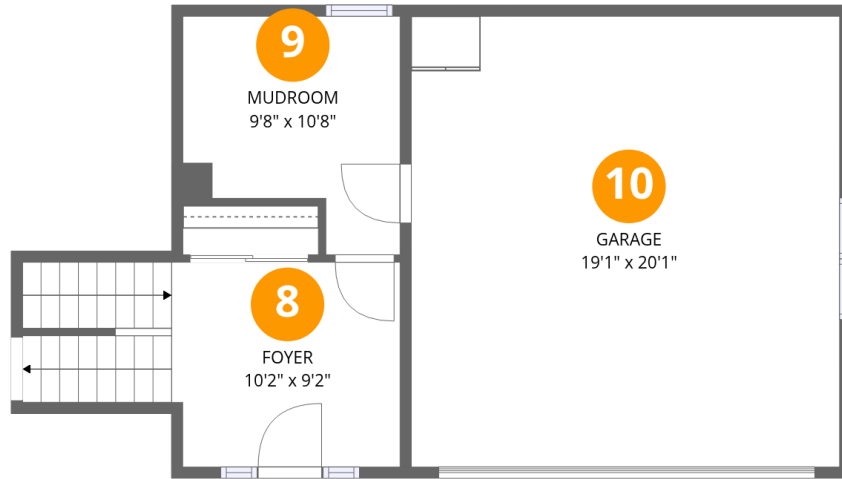
Floor 1

Total:978sqft Excluded: 85sqft

#		Dimensions	sqft	Counted as living area
1	Bedroom	10'6" x 11'3"	119 sq. ft	Yes
2	Bath	10'6" x 7'2"	75 sq. ft	Yes
3	Hall	3'1" x 15'6"	48 sq. ft	Yes
4	Bedroom	10'1" x 11'3"	113 sq. ft	Yes
5	Utility	10'5" x 7'10"	82 sq. ft	No
6	Recreation Room	24'8" x 18'1"	446 sq. ft	Yes
7	Room	10'5" x 9'8"	101 sq. ft	Yes

Home data report

1610 Heather Drive, Edgelawn Randall, Aurora, Kane County, Illinois, United States, 60506



Room dimensions

Floor 2

Total:240sqft

Excluded: 384sqft

#		Dimensions	sqft	Counted as living area
8	Foyer	10'2" x 9'2"	93 sq. ft	Yes
9	Mudroom	9'8" x 10'8"	103 sq. ft	Yes
10	Garage	19'1" x 20'1"	384 sq. ft	No

Home data report

1610 Heather Drive, Edgelawn Randall, Aurora, Kane County, Illinois, United States, 60506



Room dimensions

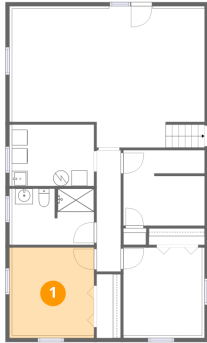
Floor 3

Total:1151sqft Excluded: 180sqft

#		Dimensions	sqft	Counted as living area
11	Kitchen	11'3" x 12'6"	140 sq. ft	Yes
12	Primary Bedroom	11'3" x 15'2"	170 sq. ft	Yes
13	Bath	4'0" x 8'1"	32 sq. ft	Yes
14	Dining Area	11'7" x 10'1"	116 sq. ft	Yes
15	Screened Porch	15'5" x 11'9"	180 sq. ft	No
16	Hall	3'1" x 12'6"	38 sq. ft	Yes
17	Bedroom	13'6" x 11'7"	156 sq. ft	Yes
18	Living Room	13'6" x 22'4"	301 sq. ft	Yes
19	Bath	6'11" x 8'1"	56 sq. ft	Yes
20	Bedroom	10'1" x 9'7"	97 sq. ft	Yes

1610 Heather Drive, Edgelawn Randall, Aurora, Kane County, Illinois, United States, 60506

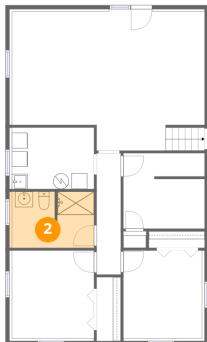
1 Floor 1 - Bedroom



Dimensions: 10'6" x 11'3"
Area: 119 sq. ft
Counted as living area: Yes

Heated: Yes
Finished: Yes
Enclosed: Yes
Contiguous: Yes
Permitted: Yes
Wet space: No
Addition: No
Conversion: No

2 Floor 1 - Bath

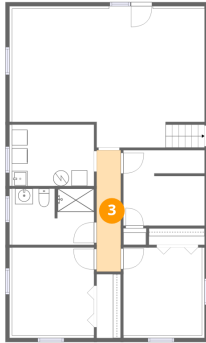


Dimensions: 10'6" x 7'2"
Area: 75 sq. ft
Counted as living area: Yes

Heated: Yes
Finished: Yes
Enclosed: Yes
Contiguous: Yes
Permitted: Yes
Wet space: Yes
Addition: No
Conversion: No

1610 Heather Drive, Edgelawn Randall, Aurora, Kane County, Illinois, United States, 60506

3 Floor 1 - Hall



Dimensions: 3'1" x 15'6"
Area: 48 sq. ft
Counted as living area: Yes

Heated: Yes
Finished: Yes
Enclosed: Yes
Contiguous: Yes
Permitted: Yes
Wet space: No
Addition: No
Conversion: No

4 Floor 1 - Bedroom



Dimensions: 10'1" x 11'3"
Area: 113 sq. ft
Counted as living area: Yes

Heated: Yes
Finished: Yes
Enclosed: Yes
Contiguous: Yes
Permitted: Yes
Wet space: No
Addition: No
Conversion: No

5 Floor 1 - Utility

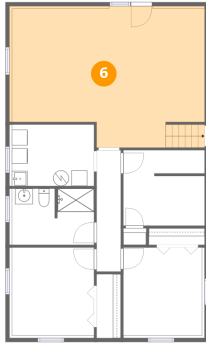


Dimensions: 10'5" x 7'10"
Area: 82 sq. ft
Counted as living area: No

Heated: Yes
Finished: No
Enclosed: Yes
Contiguous: Yes
Permitted: Yes
Wet space: No
Addition: No
Conversion: No

1610 Heather Drive, Edgelawn Randall, Aurora, Kane County, Illinois, United States, 60506

6 Floor 1 - Recreation Room



Dimensions: 24'8" x 18'1"
Area: 446 sq. ft
Counted as living area: Yes

Heated: Yes
Finished: Yes
Enclosed: Yes
Contiguous: Yes
Permitted: Yes
Wet space: No
Addition: No
Conversion: No

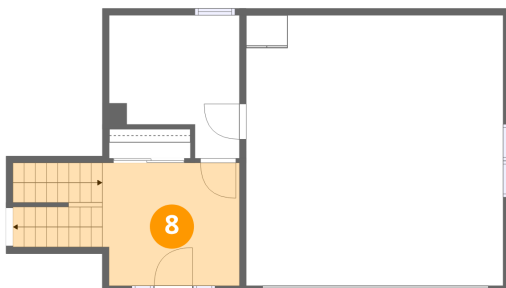
7 Floor 1 - Room



Dimensions: 10'5" x 9'8"
Area: 101 sq. ft
Counted as living area: Yes

Heated: Yes
Finished: Yes
Enclosed: Yes
Contiguous: Yes
Permitted: Yes
Wet space: No
Addition: No
Conversion: No

8 Floor 2 - Foyer

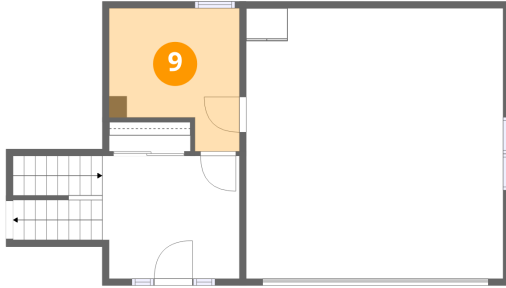


Dimensions: 10'2" x 9'2"
Area: 93 sq. ft
Counted as living area: Yes

Heated: Yes
Finished: Yes
Enclosed: Yes
Contiguous: Yes
Permitted: Yes
Wet space: No
Addition: No
Conversion: No

1610 Heather Drive, Edgelawn Randall, Aurora, Kane County, Illinois, United States, 60506

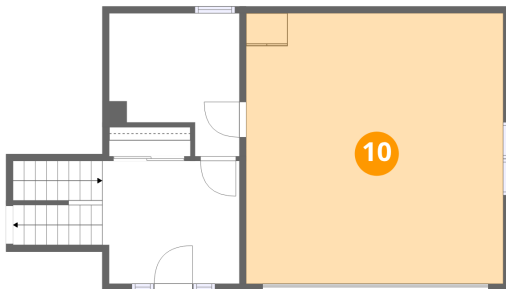
9 Floor 2 - Mudroom



Dimensions: 9'8" x 10'8"
Area: 103 sq. ft
Counted as living area: Yes

Heated: Yes
Finished: Yes
Enclosed: Yes
Contiguous: Yes
Permitted: Yes
Wet space: No
Addition: No
Conversion: No

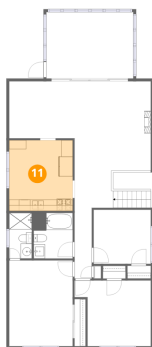
10 Floor 2 - Garage



Dimensions: 19'1" x 20'1"
Area: 384 sq. ft
Counted as living area: No

Heated: No
Finished: No
Enclosed: Yes
Contiguous: Yes
Permitted: Yes
Wet space: No
Addition: No
Conversion: No

11 Floor 3 - Kitchen



Dimensions: 11'3" x 12'6"
Area: 140 sq. ft
Counted as living area: Yes

Heated: Yes
Finished: Yes
Enclosed: Yes
Contiguous: Yes
Permitted: Yes
Wet space: No
Addition: No
Conversion: No

1610 Heather Drive, Edgelawn Randall, Aurora, Kane County, Illinois, United States, 60506

12 Floor 3 - Primary Bedroom



Dimensions: 11'3" x 15'2"
Area: 170 sq. ft
Counted as living area: Yes

Heated: Yes
Finished: Yes
Enclosed: Yes
Contiguous: Yes
Permitted: Yes
Wet space: No
Addition: No
Conversion: No

13 Floor 3 - Bath



Dimensions: 4'0" x 8'1"
Area: 32 sq. ft
Counted as living area: Yes

Heated: Yes
Finished: Yes
Enclosed: Yes
Contiguous: Yes
Permitted: Yes
Wet space: Yes
Addition: No
Conversion: No

14 Floor 3 - Dining Area



Dimensions: 11'7" x 10'1"
Area: 116 sq. ft
Counted as living area: Yes

Heated: Yes
Finished: Yes
Enclosed: Yes
Contiguous: Yes
Permitted: Yes
Wet space: No
Addition: No
Conversion: No

1610 Heather Drive, Edgelawn Randall, Aurora, Kane County, Illinois, United States, 60506

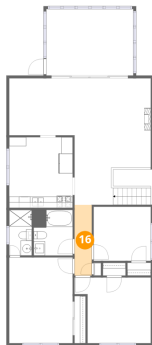
15 Floor 3 - Screened Porch



Dimensions: 15'5" x 11'9"
Area: 180 sq. ft
Counted as living area: No

Heated: No
Finished: No
Enclosed: No
Contiguous: Yes
Permitted: Yes
Wet space: No
Addition: No
Conversion: No

16 Floor 3 - Hall



Dimensions: 3'1" x 12'6"
Area: 38 sq. ft
Counted as living area: Yes

Heated: Yes
Finished: Yes
Enclosed: Yes
Contiguous: Yes
Permitted: Yes
Wet space: No
Addition: No
Conversion: No

17 Floor 3 - Bedroom



Dimensions: 13'6" x 11'7"
Area: 156 sq. ft
Counted as living area: Yes

Heated: Yes
Finished: Yes
Enclosed: Yes
Contiguous: Yes
Permitted: Yes
Wet space: No
Addition: No
Conversion: No

1610 Heather Drive, Edgelawn Randall, Aurora, Kane County, Illinois, United States, 60506

18 Floor 3 - Living Room



Dimensions: 13'6" x 22'4"
Area: 301 sq. ft
Counted as living area: Yes

Heated: Yes
Finished: Yes
Enclosed: Yes
Contiguous: Yes
Permitted: Yes
Wet space: No
Addition: No
Conversion: No

19 Floor 3 - Bath



Dimensions: 6'11" x 8'1"
Area: 56 sq. ft
Counted as living area: Yes

Heated: Yes
Finished: Yes
Enclosed: Yes
Contiguous: Yes
Permitted: Yes
Wet space: Yes
Addition: No
Conversion: No

20 Floor 3 - Bedroom



Dimensions: 10'1" x 9'7"
Area: 97 sq. ft
Counted as living area: Yes

Heated: Yes
Finished: Yes
Enclosed: Yes
Contiguous: Yes
Permitted: Yes
Wet space: No
Addition: No
Conversion: No