

Home data report

1866 Bowler Dr, Pickering, ON, CA



Total Area: 2108 sq. ft

Basement: 634 sq. ft, 1st Floor: 841 sq. ft, 2nd Floor: 633 sq. ft

Excluded: Storage 211 sq. ft, Garage 202 sq. ft, Covered deck 222 sq. ft, Deck 147 sq. ft, Fireplace 8 sq. ft, Walls: 209 sq. ft

Property summary

 **3** Floors

 **3** Bedrooms

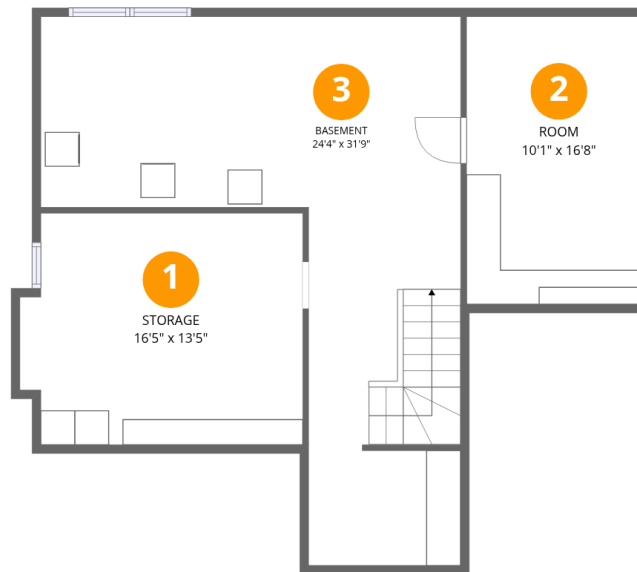
 **1** Bathrooms

Home data report

1866 Bowler Dr, Pickering, ON, CA

 **2**
Half baths

 **1**
Garages



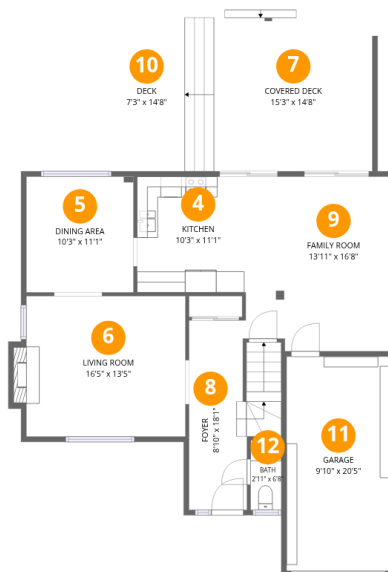
Room dimensions

Floor 1 Below grade

Total: 634 sqft

Excluded: 211 sqft

#		Dimensions	sqft	Counted as living area
1	Storage	16'5" x 13'5"	210 sq. ft	No
2	Room	10'1" x 16'8"	168 sq. ft	Yes
3	Basement	24'4" x 31'9"	450 sq. ft	Yes

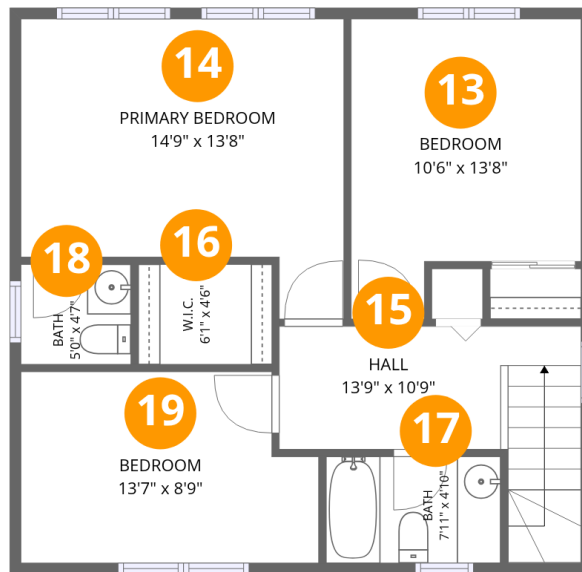


Room dimensions

Floor 2

Total: 841 sqft Excluded: 579 sqft

#		Dimensions	sqft	Counted as living area
4	Kitchen	10'3" x 11'1"	113 sq. ft	Yes
5	Dining Area	10'3" x 11'1"	113 sq. ft	Yes
6	Living Room	16'5" x 13'5"	210 sq. ft	Yes
7	Covered Deck	15'3" x 14'8"	222 sq. ft	No
8	Foyer	8'10" x 18'1"	127 sq. ft	Yes
9	Family Room	13'11" x 16'8"	227 sq. ft	Yes
10	Deck	7'3" x 14'8"	147 sq. ft	No
11	Garage	9'10" x 20'5"	202 sq. ft	No
12	Bath	2'11" x 6'8"	20 sq. ft	Yes



Room dimensions

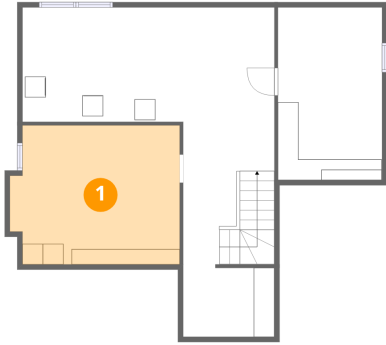
Floor 3

Total: 633 sqft

Excluded: 0 sqft

#		Dimensions	sqft	Counted as living area
13	Bedroom	10'6" x 13'8"	125 sq. ft	Yes
14	Primary Bedroom	14'9" x 13'8"	168 sq. ft	Yes
15	Hall	13'9" x 10'9"	94 sq. ft	Yes
16	W.I.C.	6'1" x 4'6"	28 sq. ft	Yes
17	Bath	7'11" x 4'10"	39 sq. ft	Yes
18	Bath	5'0" x 4'7"	23 sq. ft	Yes
19	Bedroom	13'7" x 8'9"	110 sq. ft	Yes

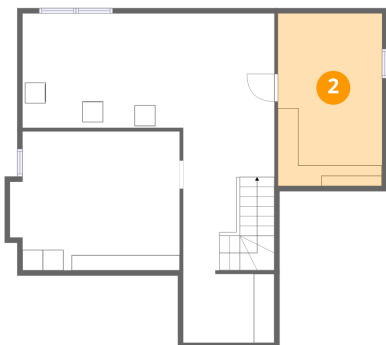
1 Floor 1 - Storage



Dimensions: 16'5" x 13'5"
Area: 210 sq. ft
Counted as living area: No

Heated: No
Finished: No
Enclosed: No
Contiguous: Yes
Permitted: Yes
Wet space: No
Addition: No
Conversion: No

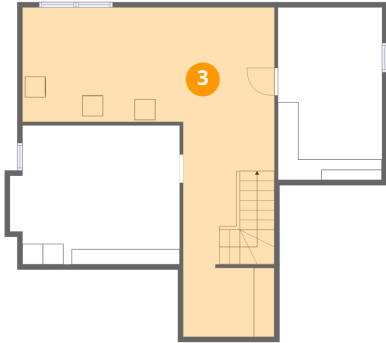
2 Floor 1 - Room



Dimensions: 10'1" x 16'8"
Area: 168 sq. ft
Counted as living area: Yes

Heated: Yes
Finished: Yes
Enclosed: Yes
Contiguous: Yes
Permitted: Yes
Wet space: No
Addition: No
Conversion: No

3 Floor 1 - Basement



Dimensions: 24'4" x 31'9"
Area: 450 sq. ft
Counted as living area: Yes

Heated: Yes
Finished: Yes
Enclosed: Yes
Contiguous: Yes
Permitted: Yes
Wet space: No
Addition: No
Conversion: No

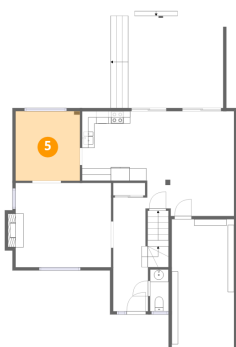
4 Floor 2 - Kitchen



Dimensions: 10'3" x 11'1"
Area: 113 sq. ft
Counted as living area: Yes

Heated: Yes
Finished: Yes
Enclosed: Yes
Contiguous: Yes
Permitted: Yes
Wet space: No
Addition: No
Conversion: No

5 Floor 2 - Dining Area



Dimensions: 10'3" x 11'1"
Area: 113 sq. ft
Counted as living area: Yes

Heated: Yes
Finished: Yes
Enclosed: Yes
Contiguous: Yes
Permitted: Yes
Wet space: No
Addition: No
Conversion: No

6 Floor 2 - Living Room



Dimensions: 16'5" x 13'5"
Area: 210 sq. ft
Counted as living area: Yes

Heated: Yes
Finished: Yes
Enclosed: Yes
Contiguous: Yes
Permitted: Yes
Wet space: No
Addition: No
Conversion: No

7 Floor 2 - Covered Deck



Dimensions: 15'3" x 14'8"
Area: 222 sq. ft
Counted as living area: No

Heated: No
Finished: No
Enclosed: No
Contiguous: Yes
Permitted: Yes
Wet space: No
Addition: No
Conversion: No

8 Floor 2 - Foyer



Dimensions: 8'10" x 18'1"
Area: 127 sq. ft
Counted as living area: Yes

Heated: Yes
Finished: Yes
Enclosed: Yes
Contiguous: Yes
Permitted: Yes
Wet space: No
Addition: No
Conversion: No

9 Floor 2 - Family Room



Dimensions: 13'11" x 16'8"
Area: 227 sq. ft
Counted as living area: Yes

Heated: Yes
Finished: Yes
Enclosed: Yes
Contiguous: Yes
Permitted: Yes
Wet space: No
Addition: No
Conversion: No

10 Floor 2 - Deck



Dimensions: 7'3" x 14'8"
Area: 147 sq. ft
Counted as living area: No

Heated: No
Finished: No
Enclosed: No
Contiguous: Yes
Permitted: Yes
Wet space: No
Addition: No
Conversion: No

11 Floor 2 - Garage



Dimensions: 9'10" x 20'5"
Area: 202 sq. ft
Counted as living area: No

Heated: No
Finished: No
Enclosed: Yes
Contiguous: Yes
Permitted: Yes
Wet space: No
Addition: No
Conversion: No

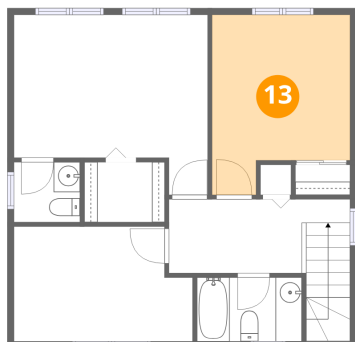
12 Floor 2 - Bath



Dimensions: 2'11" x 6'8"
Area: 20 sq. ft
Counted as living area: Yes

Heated: Yes
Finished: Yes
Enclosed: Yes
Contiguous: Yes
Permitted: Yes
Wet space: Yes
Addition: No
Conversion: No

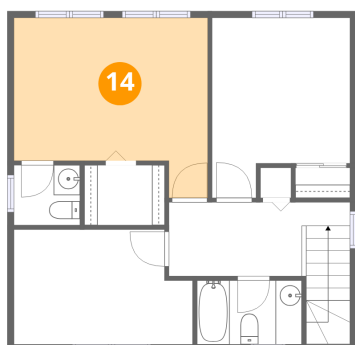
13 Floor 3 - Bedroom



Dimensions: 10'6" x 13'8"
Area: 125 sq. ft
Counted as living area: Yes

Heated: Yes
Finished: Yes
Enclosed: Yes
Contiguous: Yes
Permitted: Yes
Wet space: No
Addition: No
Conversion: No

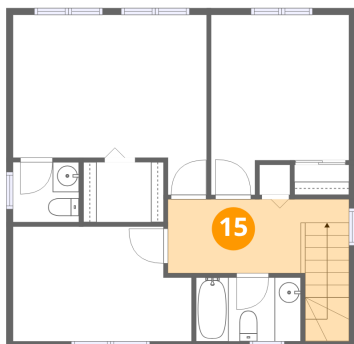
14 Floor 3 - Primary Bedroom



Dimensions: 14'9" x 13'8"
Area: 168 sq. ft
Counted as living area: Yes

Heated: Yes
Finished: Yes
Enclosed: Yes
Contiguous: Yes
Permitted: Yes
Wet space: No
Addition: No
Conversion: No

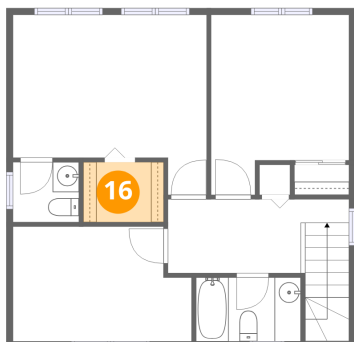
15 Floor 3 - Hall



Dimensions: 13'9" x 10'9"
Area: 94 sq. ft
Counted as living area: Yes

Heated: Yes
Finished: Yes
Enclosed: Yes
Contiguous: Yes
Permitted: Yes
Wet space: No
Addition: No
Conversion: No

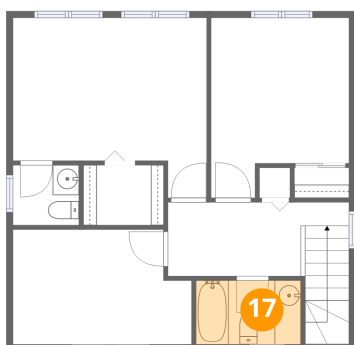
16 Floor 3 - W.I.C.



Dimensions: 6'1" x 4'6"
Area: 28 sq. ft
Counted as living area: Yes

Heated: Yes
Finished: Yes
Enclosed: Yes
Contiguous: Yes
Permitted: Yes
Wet space: No
Addition: No
Conversion: No

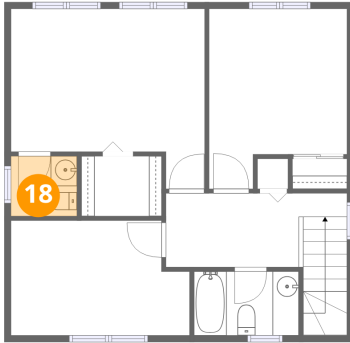
17 Floor 3 - Bath



Dimensions: 7'11" x 4'10"
Area: 39 sq. ft
Counted as living area: Yes

Heated: Yes
Finished: Yes
Enclosed: Yes
Contiguous: Yes
Permitted: Yes
Wet space: Yes
Addition: No
Conversion: No

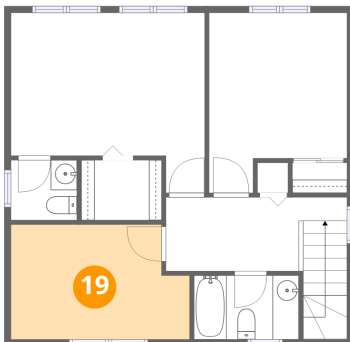
18 Floor 3 - Bath



Dimensions: 5'0" x 4'7"
Area: 23 sq. ft
Counted as living area: Yes

Heated: Yes
Finished: Yes
Enclosed: Yes
Contiguous: Yes
Permitted: Yes
Wet space: Yes
Addition: No
Conversion: No

19 Floor 3 - Bedroom



Dimensions: 13'7" x 8'9"
Area: 110 sq. ft
Counted as living area: Yes

Heated: Yes
Finished: Yes
Enclosed: Yes
Contiguous: Yes
Permitted: Yes
Wet space: No
Addition: No
Conversion: No