

Home data report

109 1st St, Dravosburg, PA, US



Total Area: 2313 sq. ft

Basement: 609 sq. ft, 1st Floor: 724 sq. ft, 2nd Floor: 613 sq. ft, 3rd Floor: 367 sq. ft

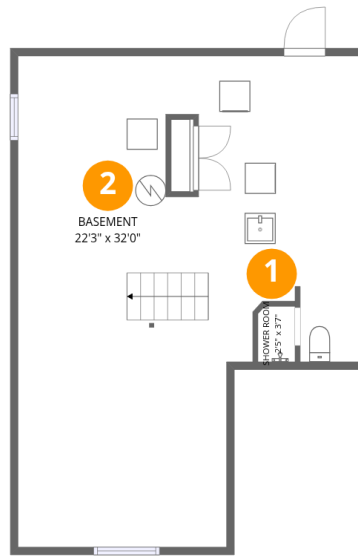
Excluded: Porch 98 sq. ft, Embedded window 22 sq. ft, Low ceiling 143 sq. ft, Walls: 221 sq. ft

Property summary

 **4** Floors

 **3** Bedrooms

 **1** Bathrooms

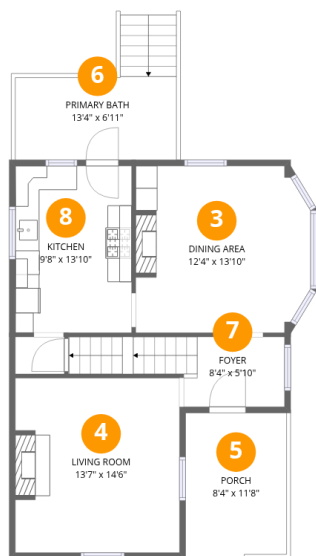


Room dimensions

Floor 1 Below grade

Total:609sqft Excluded: 0sqft

#		Dimensions	sqft	Counted as living area
1	Shower Room	2'5" x 3'7"	9 sq. ft	Yes
2	Basement	22'3" x 32'0"	597 sq. ft	Yes

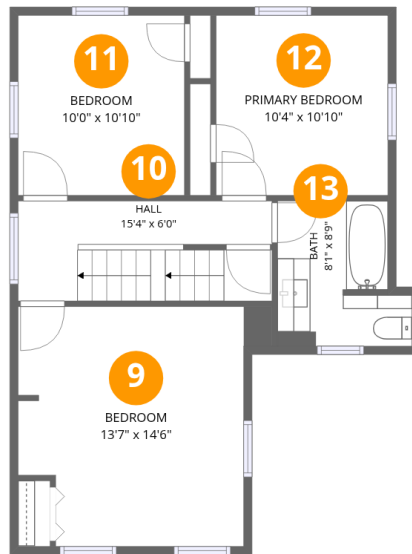


Room dimensions

Floor 2

Total:724sqft Excluded: 120sqft

#		Dimensions	sqft	Counted as living area
3	Dining Area	12'4" x 13'10"	169 sq. ft	Yes
4	Living Room	13'7" x 14'6"	196 sq. ft	Yes
5	Porch	8'4" x 11'8"	98 sq. ft	No
6	Primary Bath	13'4" x 6'11"	115 sq. ft	Yes
7	Foyer	8'4" x 5'10"	78 sq. ft	Yes
8	Kitchen	9'8" x 13'10"	133 sq. ft	Yes



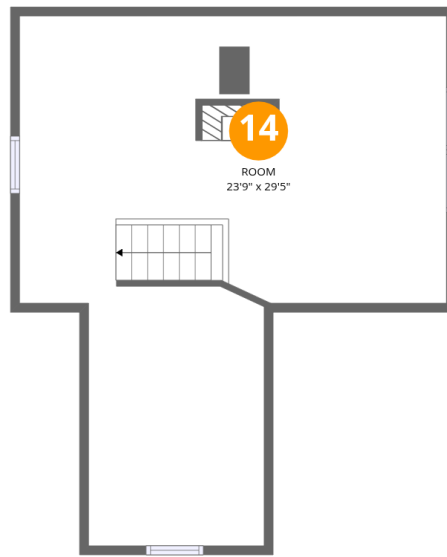
Room dimensions

Floor 3

Total: 613 sqft

Excluded: 0 sqft

#		Dimensions	sqft	Counted as living area
9	Bedroom	13'7" x 14'6"	191 sq. ft	Yes
10	Hall	15'4" x 6'0"	91 sq. ft	Yes
11	Bedroom	10'0" x 10'10"	109 sq. ft	Yes
12	Primary Bedroom	10'4" x 10'10"	112 sq. ft	Yes
13	Bath	8'1" x 8'9"	62 sq. ft	Yes



Room dimensions

Floor 4

Total:367sqft

Excluded: 143sqft

#		Dimensions	sqft	Counted as living area
14	Room	23'9" x 29'5"	365 sq. ft	No

1 Floor 1 - Shower Room



Dimensions: 2'5" x 3'7"
Area: 9 sq. ft
Counted as living area: Yes

Heated: Yes
Finished: Yes
Enclosed: Yes
Contiguous: Yes
Permitted: Yes
Wet space: Yes
Addition: No
Conversion: No

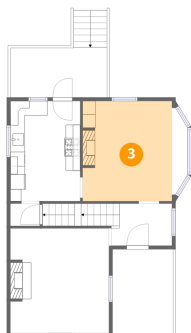
2 Floor 1 - Basement



Dimensions: 22'3" x 32'0"
Area: 597 sq. ft
Counted as living area: Yes

Heated: Yes
Finished: Yes
Enclosed: Yes
Contiguous: Yes
Permitted: Yes
Wet space: No
Addition: No
Conversion: No

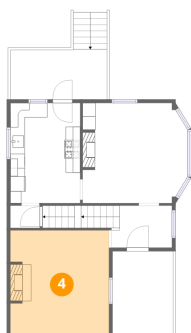
3 Floor 2 - Dining Area



Dimensions: 12'4" x 13'10"
Area: 169 sq. ft
Counted as living area: Yes

Heated: Yes
Finished: Yes
Enclosed: Yes
Contiguous: Yes
Permitted: Yes
Wet space: No
Addition: No
Conversion: No

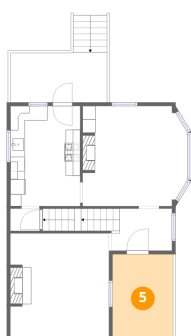
4 Floor 2 - Living Room



Dimensions: 13'7" x 14'6"
Area: 196 sq. ft
Counted as living area: Yes

Heated: Yes
Finished: Yes
Enclosed: Yes
Contiguous: Yes
Permitted: Yes
Wet space: No
Addition: No
Conversion: No

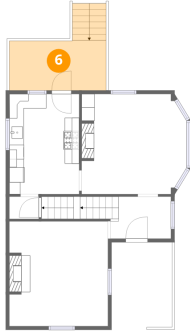
5 Floor 2 - Porch



Dimensions: 8'4" x 11'8"
Area: 98 sq. ft
Counted as living area: No

Heated: No
Finished: No
Enclosed: No
Contiguous: Yes
Permitted: Yes
Wet space: No
Addition: No
Conversion: No

6 Floor 2 - Primary Bath



Dimensions: 13'4" x 6'11"
Area: 115 sq. ft
Counted as living area: No

Heated: Yes
Finished: Yes
Enclosed: Yes
Contiguous: No
Permitted: Yes
Wet space: Yes
Addition: No
Conversion: No

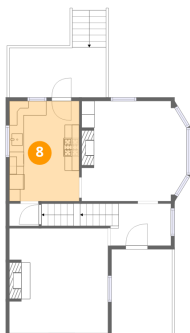
7 Floor 2 - Foyer



Dimensions: 8'4" x 5'10"
Area: 78 sq. ft
Counted as living area: Yes

Heated: Yes
Finished: Yes
Enclosed: Yes
Contiguous: Yes
Permitted: Yes
Wet space: No
Addition: No
Conversion: No

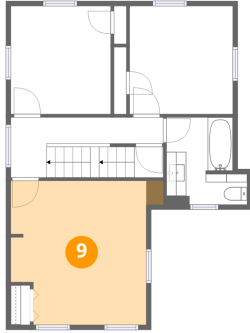
8 Floor 2 - Kitchen



Dimensions: 9'8" x 13'10"
Area: 133 sq. ft
Counted as living area: Yes

Heated: Yes
Finished: Yes
Enclosed: Yes
Contiguous: Yes
Permitted: Yes
Wet space: No
Addition: No
Conversion: No

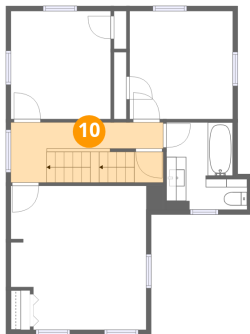
9 Floor 3 - Bedroom



Dimensions: 13'7" x 14'6"
Area: 191 sq. ft
Counted as living area: Yes

Heated: Yes
Finished: Yes
Enclosed: Yes
Contiguous: Yes
Permitted: Yes
Wet space: No
Addition: No
Conversion: No

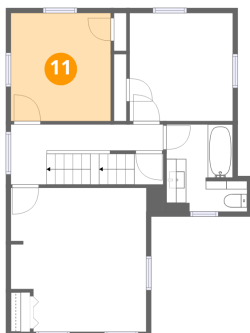
10 Floor 3 - Hall



Dimensions: 15'4" x 6'0"
Area: 91 sq. ft
Counted as living area: Yes

Heated: Yes
Finished: Yes
Enclosed: Yes
Contiguous: Yes
Permitted: Yes
Wet space: No
Addition: No
Conversion: No

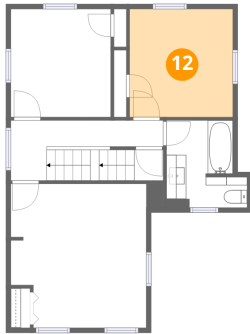
11 Floor 3 - Bedroom



Dimensions: 10'0" x 10'10"
Area: 109 sq. ft
Counted as living area: Yes

Heated: Yes
Finished: Yes
Enclosed: Yes
Contiguous: Yes
Permitted: Yes
Wet space: No
Addition: No
Conversion: No

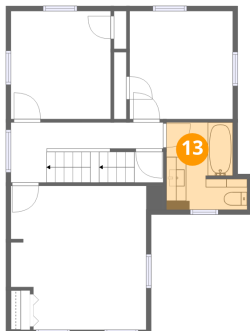
12 Floor 3 - Primary Bedroom



Dimensions: 10'4" x 10'10"
Area: 112 sq. ft
Counted as living area: Yes

Heated: Yes
Finished: Yes
Enclosed: Yes
Contiguous: Yes
Permitted: Yes
Wet space: No
Addition: No
Conversion: No

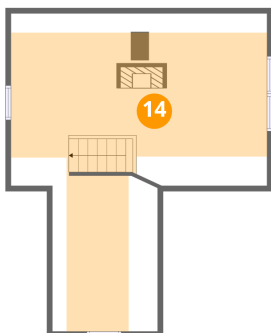
13 Floor 3 - Bath



Dimensions: 8'1" x 8'9"
Area: 62 sq. ft
Counted as living area: Yes

Heated: Yes
Finished: Yes
Enclosed: Yes
Contiguous: Yes
Permitted: Yes
Wet space: Yes
Addition: No
Conversion: No

14 Floor 4 - Room



Dimensions: 23'9" x 29'5"
Area: 365 sq. ft
Counted as living area: No

Heated: Yes
Finished: Yes
Enclosed: Yes
Contiguous: Yes
Permitted: Yes
Wet space: No
Addition: No
Conversion: No