

Home data report

5646 Andrea Drive, Elfers, Holiday, Pasco County, Florida, United States, 34690



Total Area: 1443 sq. ft

1st Floor: 1443 sq. ft

Excluded: Garage 294 sq. ft, Screened porch 235 sq. ft, Patio 1074 sq. ft, Shed 65 sq. ft, Walls: 235 sq. ft

Property summary



1 Floors



3 Bedrooms



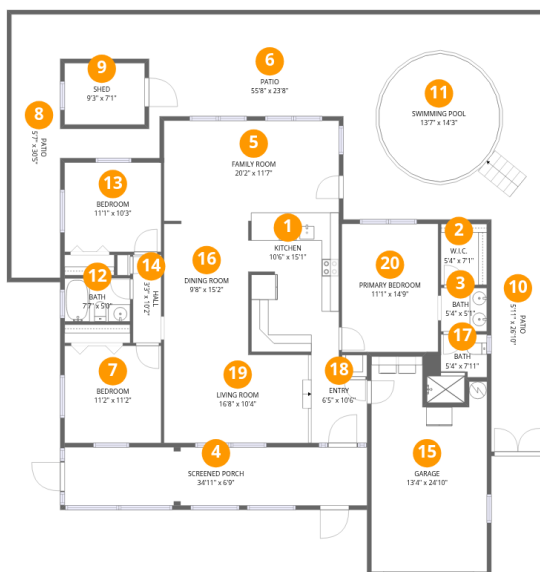
2 Bathrooms



1 Garages

Home data report

5646 Andrea Drive, Elfers, Holiday, Pasco County, Florida, United States, 34690



Room dimensions

Floor 1

Total:1443sqft Excluded: 1668sqft

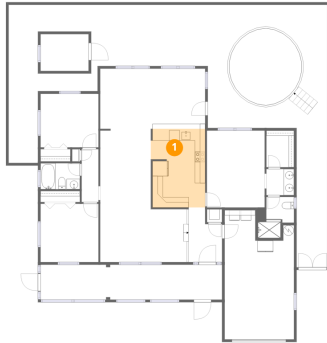
#		Dimensions	sqft	Counted as living area
1	Kitchen	10'6" x 15'1"	158 sq. ft	Yes
2	W.I.C.	5'4" x 7'1"	37 sq. ft	Yes
3	Bath	5'4" x 5'1"	27 sq. ft	Yes
4	Screened Porch	34'11" x 6'9"	235 sq. ft	No
5	Family Room	20'2" x 11'7"	233 sq. ft	Yes
6	Patio	55'8" x 23'8"	1316 sq. ft	No
7	Bedroom	11'2" x 11'2"	125 sq. ft	Yes
8	Patio	5'7" x 30'5"	170 sq. ft	No
9	Shed	9'3" x 7'1"	65 sq. ft	No
10	Patio	5'11" x 26'10"	159 sq. ft	No
11	Swimming Pool	13'7" x 14'3"	193 sq. ft	No

Home data report

5646 Andrea Drive, Elfers, Holiday, Pasco County, Florida, United States, 34690

#		Dimensions	sqft	Counted as living area
12	Bath	7'7" x 5'0"	38 sq. ft	Yes
13	Bedroom	11'1" x 10'3"	114 sq. ft	Yes
14	Hall	3'3" x 10'2"	33 sq. ft	Yes
15	Garage	13'4" x 24'10"	332 sq. ft	No
16	Dining Room	9'8" x 15'2"	147 sq. ft	Yes
17	Bath	5'4" x 7'11"	42 sq. ft	Yes
18	Entry	6'5" x 10'6"	68 sq. ft	Yes
19	Living Room	16'8" x 10'4"	173 sq. ft	Yes
20	Primary Bedroom	11'1" x 14'9"	164 sq. ft	Yes

1 Floor 1 - Kitchen



Dimensions: 10'6" x 15'1"
Area: 158 sq. ft
Counted as living area: Yes

Heated: Yes
Finished: Yes
Enclosed: Yes
Contiguous: Yes
Permitted: Yes
Wet space: No
Addition: No
Conversion: No

2 Floor 1 - W.I.C.



Dimensions: 5'4" x 7'1"
Area: 37 sq. ft
Counted as living area: Yes

Heated: Yes
Finished: Yes
Enclosed: Yes
Contiguous: Yes
Permitted: Yes
Wet space: No
Addition: No
Conversion: No

3 Floor 1 - Bath



Dimensions: 5'4" x 5'1"
Area: 27 sq. ft
Counted as living area: Yes

Heated: Yes
Finished: Yes
Enclosed: Yes
Contiguous: Yes
Permitted: Yes
Wet space: Yes
Addition: No
Conversion: No

4 Floor 1 - Screened Porch



Dimensions: 34'11" x 6'9"
Area: 235 sq. ft
Counted as living area: No

Heated: No
Finished: No
Enclosed: No
Contiguous: Yes
Permitted: Yes
Wet space: No
Addition: No
Conversion: No

5 Floor 1 - Family Room



Dimensions: 20'2" x 11'7"
Area: 233 sq. ft
Counted as living area: Yes

Heated: Yes
Finished: Yes
Enclosed: Yes
Contiguous: Yes
Permitted: Yes
Wet space: No
Addition: No
Conversion: No

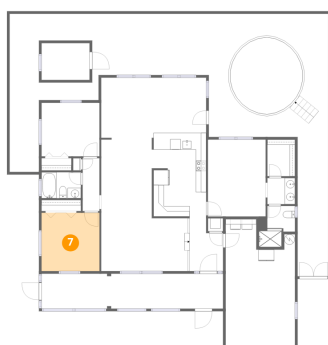
6 Floor 1 - Patio



Dimensions: 55'8" x 23'8"
Area: 1316 sq. ft
Counted as living area: No

Heated: No
Finished: No
Enclosed: No
Contiguous: Yes
Permitted: Yes
Wet space: No
Addition: No
Conversion: No

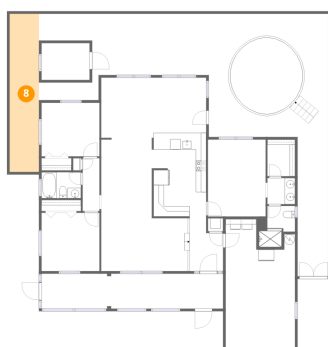
7 Floor 1 - Bedroom



Dimensions: 11'2" x 11'2"
Area: 125 sq. ft
Counted as living area: Yes

Heated: Yes
Finished: Yes
Enclosed: Yes
Contiguous: Yes
Permitted: Yes
Wet space: No
Addition: No
Conversion: No

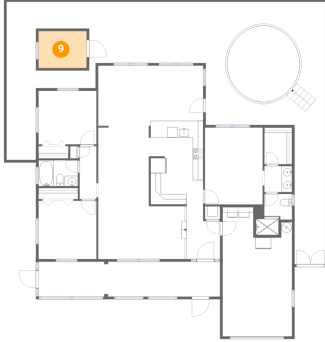
8 Floor 1 - Patio



Dimensions: 5'7" x 30'5"
Area: 170 sq. ft
Counted as living area: No

Heated: No
Finished: No
Enclosed: No
Contiguous: Yes
Permitted: Yes
Wet space: No
Addition: No
Conversion: No

9 Floor 1 - Shed



Dimensions: 9'3" x 7'1"
Area: 65 sq. ft
Counted as living area: No

Heated: No
Finished: No
Enclosed: No
Contiguous: Yes
Permitted: Yes
Wet space: No
Addition: No
Conversion: No

10 Floor 1 - Patio



Dimensions: 5'11" x 26'10"
Area: 159 sq. ft
Counted as living area: No

Heated: No
Finished: No
Enclosed: No
Contiguous: Yes
Permitted: Yes
Wet space: No
Addition: No
Conversion: No

11 Floor 1 - Swimming Pool



Dimensions: 13'7" x 14'3"
Area: 193 sq. ft
Counted as living area: No

Heated: No
Finished: No
Enclosed: No
Contiguous: Yes
Permitted: No
Wet space: No
Addition: No
Conversion: No

12 Floor 1 - Bath



Dimensions: 7'7" x 5'0"
Area: 38 sq. ft
Counted as living area: Yes

Heated: Yes
Finished: Yes
Enclosed: Yes
Contiguous: Yes
Permitted: Yes
Wet space: Yes
Addition: No
Conversion: No

13 Floor 1 - Bedroom



Dimensions: 11'1" x 10'3"
Area: 114 sq. ft
Counted as living area: Yes

Heated: Yes
Finished: Yes
Enclosed: Yes
Contiguous: Yes
Permitted: Yes
Wet space: No
Addition: No
Conversion: No

14 Floor 1 - Hall



Dimensions: 3'3" x 10'2"
Area: 33 sq. ft
Counted as living area: Yes

Heated: Yes
Finished: Yes
Enclosed: Yes
Contiguous: Yes
Permitted: Yes
Wet space: No
Addition: No
Conversion: No

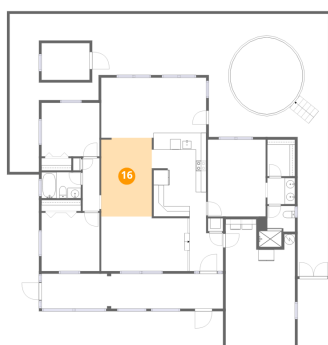
15 Floor 1 - Garage



Dimensions: 13'4" x 24'10"
Area: 332 sq. ft
Counted as living area: No

Heated: No
Finished: No
Enclosed: Yes
Contiguous: Yes
Permitted: Yes
Wet space: No
Addition: No
Conversion: No

16 Floor 1 - Dining Room



Dimensions: 9'8" x 15'2"
Area: 147 sq. ft
Counted as living area: Yes

Heated: Yes
Finished: Yes
Enclosed: Yes
Contiguous: Yes
Permitted: Yes
Wet space: No
Addition: No
Conversion: No

17 Floor 1 - Bath



Dimensions: 5'4" x 7'11"
Area: 42 sq. ft
Counted as living area: Yes

Heated: Yes
Finished: Yes
Enclosed: Yes
Contiguous: Yes
Permitted: Yes
Wet space: Yes
Addition: No
Conversion: No

18 Floor 1 - Entry



Dimensions: 6'5" x 10'6"
Area: 68 sq. ft
Counted as living area: Yes

Heated: Yes
Finished: Yes
Enclosed: Yes
Contiguous: Yes
Permitted: Yes
Wet space: No
Addition: No
Conversion: No

19 Floor 1 - Living Room



Dimensions: 16'8" x 10'4"
Area: 173 sq. ft
Counted as living area: Yes

Heated: Yes
Finished: Yes
Enclosed: Yes
Contiguous: Yes
Permitted: Yes
Wet space: No
Addition: No
Conversion: No

20 Floor 1 - Primary Bedroom



Dimensions: 11'1" x 14'9"
Area: 164 sq. ft
Counted as living area: Yes

Heated: Yes
Finished: Yes
Enclosed: Yes
Contiguous: Yes
Permitted: Yes
Wet space: No
Addition: No
Conversion: No