

# Home data report

## 3586 Stepsons HI Ln, Marshall, VA, US



**Total Area: 2132 sq. ft**

1st Floor: 420 sq. ft, 2nd Floor: 856 sq. ft, 3rd Floor: 856 sq. ft

Excluded: Porch 135 sq. ft, Garage 398 sq. ft, Balcony 177 sq. ft, Walls: 141 sq. ft

### Property summary

 **3** Floors

 **4** Bedrooms

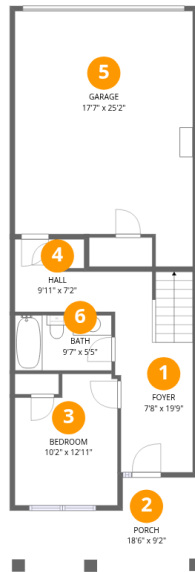
 **3** Bathrooms

Home data report

# 3586 Stepbensons HI Ln, Marshall, VA, US

 **1**  
Half baths

 **1**  
Garages



## Room dimensions

Floor 1

Total:420sqft

Excluded: 533sqft

#		Dimensions	sqft	Counted as living area
1	Foyer	7'8" x 19'9"	152 sq. ft	Yes
2	Porch	18'6" x 9'2"	170 sq. ft	No
3	Bedroom	10'2" x 12'11"	131 sq. ft	Yes
4	Hall	9'11" x 7'2"	71 sq. ft	Yes
5	Garage	17'7" x 25'2"	442 sq. ft	No
6	Bath	9'7" x 5'5"	52 sq. ft	Yes

# Home data report

## 3586 Stepensions HI Ln,Marshall,VA,US



### Room dimensions

Floor 2

Total:856sqft Excluded: 177sqft

#		Dimensions	sqft	Counted as living area
7	Pantry	2'9" x 4'4"	12 sq. ft	Yes
8	Dining Area	12'5" x 15'10"	197 sq. ft	Yes
9	Balcony	17'11" x 9'11"	177 sq. ft	No
10	Bath	5'7" x 4'8"	26 sq. ft	Yes
11	Kitchen	17'7" x 12'11"	227 sq. ft	Yes
12	Living Room	17'7" x 19'11"	349 sq. ft	Yes



## Room dimensions

Floor 3

Total:856sqft

Excluded: 0sqft

#		Dimensions	sqft	Counted as living area
13	Bedroom	8'6" x 14'3"	122 sq. ft	Yes
14	Primary Bedroom	17'7" x 18'0"	315 sq. ft	Yes
15	Hall	10'3" x 18'3"	188 sq. ft	Yes
16	Bath	6'11" x 11'3"	78 sq. ft	Yes
17	Laundry	5'7" x 3'1"	17 sq. ft	Yes
18	W.I.C.	5'7" x 8'2"	46 sq. ft	Yes
19	Bath	6'11" x 9'5"	65 sq. ft	Yes
20	Bedroom	8'8" x 15'1"	131 sq. ft	Yes

## 1 Floor 1 - Foyer



Dimensions: 7'8" x 19'9"  
Area: 152 sq. ft  
Counted as living area: Yes

Heated: Yes  
Finished: Yes  
Enclosed: Yes  
Contiguous: Yes  
Permitted: Yes  
Wet space: No  
Addition: No  
Conversion: No

## 2 Floor 1 - Porch



Dimensions: 18'6" x 9'2"  
Area: 170 sq. ft  
Counted as living area: No

Heated: No  
Finished: No  
Enclosed: No  
Contiguous: Yes  
Permitted: Yes  
Wet space: No  
Addition: No  
Conversion: No

### 3 Floor 1 - Bedroom



Dimensions: 10'2" x 12'11"  
Area: 131 sq. ft  
Counted as living area: Yes

Heated: Yes  
Finished: Yes  
Enclosed: Yes  
Contiguous: Yes  
Permitted: Yes  
Wet space: No  
Addition: No  
Conversion: No

### 4 Floor 1 - Hall



Dimensions: 9'11" x 7'2"  
Area: 71 sq. ft  
Counted as living area: Yes

Heated: Yes  
Finished: Yes  
Enclosed: Yes  
Contiguous: Yes  
Permitted: Yes  
Wet space: No  
Addition: No  
Conversion: No

### 5 Floor 1 - Garage



Dimensions: 17'7" x 25'2"  
Area: 442 sq. ft  
Counted as living area: No

Heated: No  
Finished: No  
Enclosed: Yes  
Contiguous: Yes  
Permitted: Yes  
Wet space: No  
Addition: No  
Conversion: No

### 6 Floor 1 - Bath



Dimensions: 9'7" x 5'5"  
Area: 52 sq. ft  
Counted as living area: Yes

Heated: Yes  
Finished: Yes  
Enclosed: Yes  
Contiguous: Yes  
Permitted: Yes  
Wet space: Yes  
Addition: No  
Conversion: No

### 7 Floor 2 - Pantry



Dimensions: 2'9" x 4'4"  
Area: 12 sq. ft  
Counted as living area: Yes

Heated: Yes  
Finished: Yes  
Enclosed: Yes  
Contiguous: Yes  
Permitted: Yes  
Wet space: No  
Addition: No  
Conversion: No

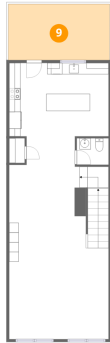
### 8 Floor 2 - Dining Area



Dimensions: 12'5" x 15'10"  
Area: 197 sq. ft  
Counted as living area: Yes

Heated: Yes  
Finished: Yes  
Enclosed: Yes  
Contiguous: Yes  
Permitted: Yes  
Wet space: No  
Addition: No  
Conversion: No

## 9 Floor 2 - Balcony



Dimensions: 17'11" x 9'11"  
Area: 177 sq. ft  
Counted as living area: No

Heated: No  
Finished: No  
Enclosed: No  
Contiguous: Yes  
Permitted: Yes  
Wet space: No  
Addition: No  
Conversion: No

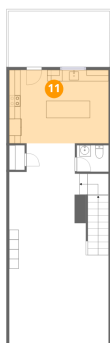
## 10 Floor 2 - Bath



Dimensions: 5'7" x 4'8"  
Area: 26 sq. ft  
Counted as living area: Yes

Heated: Yes  
Finished: Yes  
Enclosed: Yes  
Contiguous: Yes  
Permitted: Yes  
Wet space: Yes  
Addition: No  
Conversion: No

## 11 Floor 2 - Kitchen

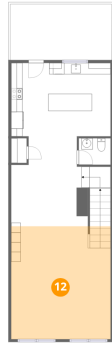


Dimensions: 17'7" x 12'11"  
Area: 227 sq. ft  
Counted as living area: Yes

Heated: Yes  
Finished: Yes  
Enclosed: Yes  
Contiguous: Yes  
Permitted: Yes  
Wet space: No  
Addition: No  
Conversion: No

**12** Floor 2 - Living Room

---

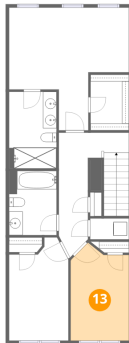


Dimensions: 17'7" x 19'11"  
Area: 349 sq. ft  
Counted as living area: Yes

Heated: Yes  
Finished: Yes  
Enclosed: Yes  
Contiguous: Yes  
Permitted: Yes  
Wet space: No  
Addition: No  
Conversion: No

**13** Floor 3 - Bedroom

---

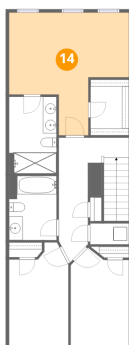


Dimensions: 8'6" x 14'3"  
Area: 122 sq. ft  
Counted as living area: Yes

Heated: Yes  
Finished: Yes  
Enclosed: Yes  
Contiguous: Yes  
Permitted: Yes  
Wet space: No  
Addition: No  
Conversion: No

**14** Floor 3 - Primary Bedroom

---



Dimensions: 17'7" x 18'0"  
Area: 315 sq. ft  
Counted as living area: Yes

Heated: Yes  
Finished: Yes  
Enclosed: Yes  
Contiguous: Yes  
Permitted: Yes  
Wet space: No  
Addition: No  
Conversion: No

**15** Floor 3 - Hall



Dimensions: 10'3" x 18'3"  
Area: 188 sq. ft  
Counted as living area: Yes

Heated: Yes  
Finished: Yes  
Enclosed: Yes  
Contiguous: Yes  
Permitted: Yes  
Wet space: No  
Addition: No  
Conversion: No

**16** Floor 3 - Bath



Dimensions: 6'11" x 11'3"  
Area: 78 sq. ft  
Counted as living area: Yes

Heated: Yes  
Finished: Yes  
Enclosed: Yes  
Contiguous: Yes  
Permitted: Yes  
Wet space: Yes  
Addition: No  
Conversion: No

**17** Floor 3 - Laundry



Dimensions: 5'7" x 3'1"  
Area: 17 sq. ft  
Counted as living area: Yes

Heated: Yes  
Finished: Yes  
Enclosed: Yes  
Contiguous: Yes  
Permitted: Yes  
Wet space: No  
Addition: No  
Conversion: No

**18** Floor 3 - W.I.C.



Dimensions: 5'7" x 8'2"  
Area: 46 sq. ft  
Counted as living area: Yes

Heated: Yes  
Finished: Yes  
Enclosed: Yes  
Contiguous: Yes  
Permitted: Yes  
Wet space: No  
Addition: No  
Conversion: No

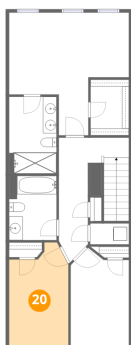
**19** Floor 3 - Bath



Dimensions: 6'11" x 9'5"  
Area: 65 sq. ft  
Counted as living area: Yes

Heated: Yes  
Finished: Yes  
Enclosed: Yes  
Contiguous: Yes  
Permitted: Yes  
Wet space: Yes  
Addition: No  
Conversion: No

**20** Floor 3 - Bedroom



Dimensions: 8'8" x 15'1"  
Area: 131 sq. ft  
Counted as living area: Yes

Heated: Yes  
Finished: Yes  
Enclosed: Yes  
Contiguous: Yes  
Permitted: Yes  
Wet space: No  
Addition: No  
Conversion: No