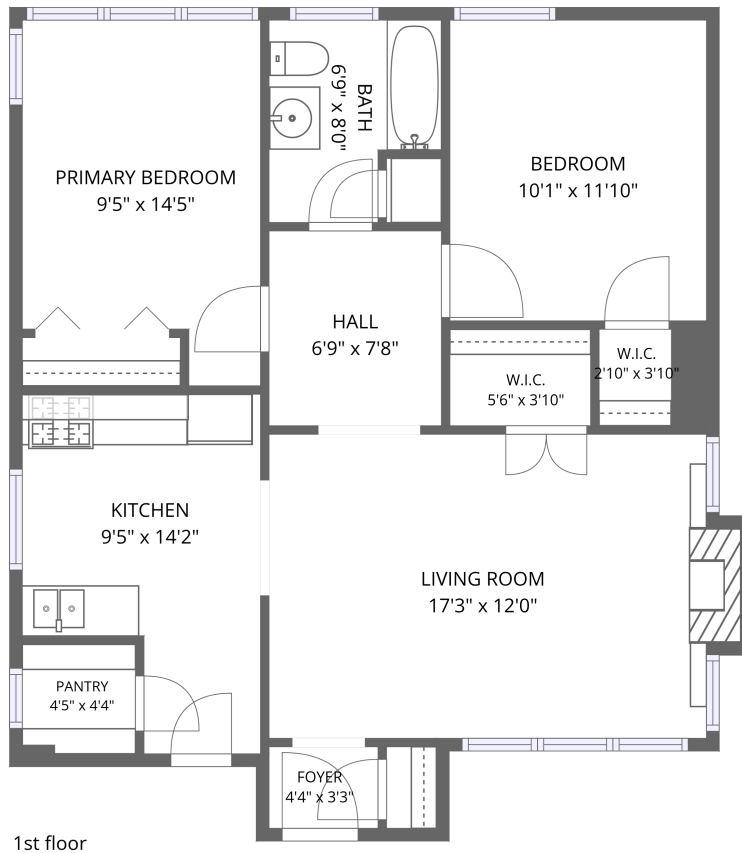


Home data report

6343 N Oakley Ave, Chicago, IL, US




**Total Area: 793 sq. ft**

1st Floor: 793 sq. ft

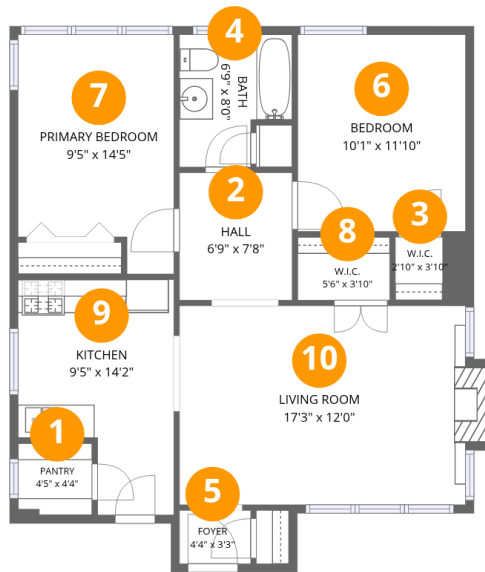
Excluded: Fireplace 7 sq. ft, Walls: 0 sq. ft

## Property summary

 **1** Floors

 **2** Bedrooms

 **1** Bathrooms



## Room dimensions

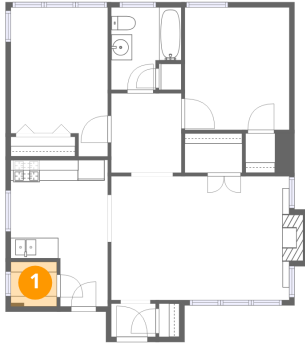
Floor 1

Total: 793 sqft

Excluded: 7 sqft

#		Dimensions	sqft	Counted as living area
1	Pantry	4'5" x 4'4"	19 sq. ft	Yes
2	Hall	6'9" x 7'8"	52 sq. ft	Yes
3	W.I.C.	2'10" x 3'10"	16 sq. ft	Yes
4	Bath	6'9" x 8'0"	47 sq. ft	Yes
5	Foyer	4'4" x 3'3"	14 sq. ft	Yes
6	Bedroom	10'1" x 11'10"	120 sq. ft	Yes
7	Primary Bedroom	9'5" x 14'5"	120 sq. ft	Yes
8	W.I.C.	5'6" x 3'10"	21 sq. ft	Yes
9	Kitchen	9'5" x 14'2"	110 sq. ft	Yes
10	Living Room	17'3" x 12'0"	212 sq. ft	Yes

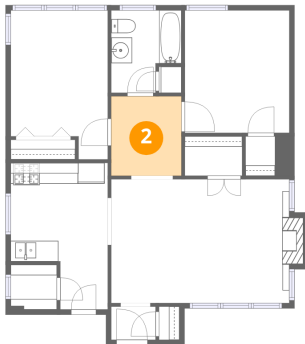
## 1 Floor 1 - Pantry



Dimensions: 4'5" x 4'4"  
Area: 19 sq. ft  
Counted as living area: Yes

Heated: Yes  
Finished: Yes  
Enclosed: Yes  
Contiguous: Yes  
Permitted: Yes  
Wet space: No  
Addition: No  
Conversion: No

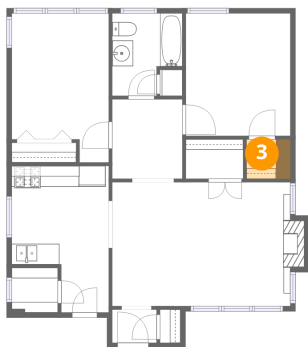
## 2 Floor 1 - Hall



Dimensions: 6'9" x 7'8"  
Area: 52 sq. ft  
Counted as living area: Yes

Heated: Yes  
Finished: Yes  
Enclosed: Yes  
Contiguous: Yes  
Permitted: Yes  
Wet space: No  
Addition: No  
Conversion: No

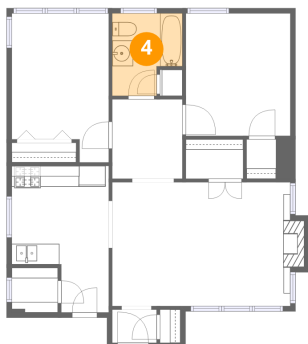
**3** Floor 1 - W.I.C.



Dimensions: 2'10" x 3'10"  
Area: 16 sq. ft  
Counted as living area: Yes

Heated: Yes  
Finished: Yes  
Enclosed: Yes  
Contiguous: Yes  
Permitted: Yes  
Wet space: No  
Addition: No  
Conversion: No

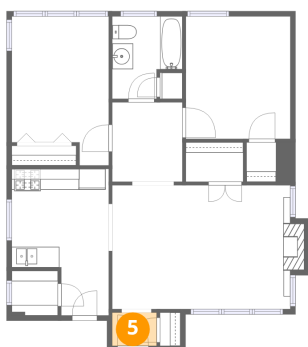
**4** Floor 1 - Bath



Dimensions: 6'9" x 8'0"  
Area: 47 sq. ft  
Counted as living area: Yes

Heated: Yes  
Finished: Yes  
Enclosed: Yes  
Contiguous: Yes  
Permitted: Yes  
Wet space: Yes  
Addition: No  
Conversion: No

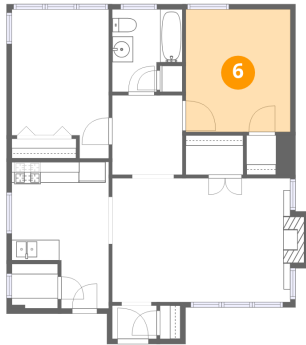
**5** Floor 1 - Foyer



Dimensions: 4'4" x 3'3"  
Area: 14 sq. ft  
Counted as living area: Yes

Heated: Yes  
Finished: Yes  
Enclosed: Yes  
Contiguous: Yes  
Permitted: Yes  
Wet space: No  
Addition: No  
Conversion: No

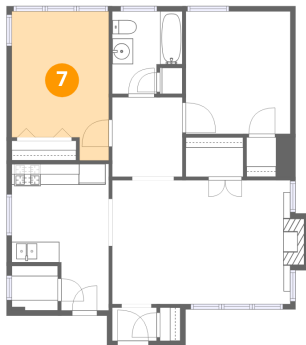
### 6 Floor 1 - Bedroom



Dimensions: 10'1" x 11'10"  
Area: 120 sq. ft  
Counted as living area: Yes

Heated: Yes  
Finished: Yes  
Enclosed: Yes  
Contiguous: Yes  
Permitted: Yes  
Wet space: No  
Addition: No  
Conversion: No

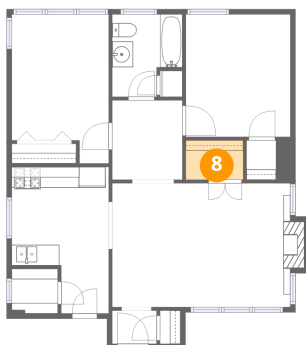
### 7 Floor 1 - Primary Bedroom



Dimensions: 9'5" x 14'5"  
Area: 120 sq. ft  
Counted as living area: Yes

Heated: Yes  
Finished: Yes  
Enclosed: Yes  
Contiguous: Yes  
Permitted: Yes  
Wet space: No  
Addition: No  
Conversion: No

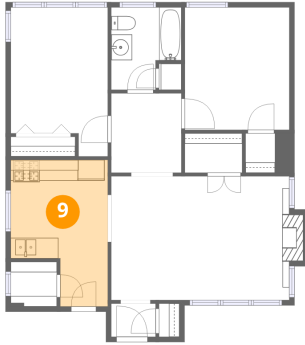
### 8 Floor 1 - W.I.C.



Dimensions: 5'6" x 3'10"  
Area: 21 sq. ft  
Counted as living area: Yes

Heated: Yes  
Finished: Yes  
Enclosed: Yes  
Contiguous: Yes  
Permitted: Yes  
Wet space: No  
Addition: No  
Conversion: No

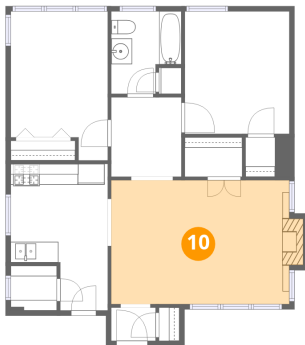
**9** Floor 1 - Kitchen



Dimensions: 9'5" x 14'2"  
Area: 110 sq. ft  
Counted as living area: Yes

Heated: Yes  
Finished: Yes  
Enclosed: Yes  
Contiguous: Yes  
Permitted: Yes  
Wet space: No  
Addition: No  
Conversion: No

**10** Floor 1 - Living Room



Dimensions: 17'3" x 12'0"  
Area: 212 sq. ft  
Counted as living area: Yes

Heated: Yes  
Finished: Yes  
Enclosed: Yes  
Contiguous: Yes  
Permitted: Yes  
Wet space: No  
Addition: No  
Conversion: No