

Home data report

58 Stonehaven Lane, Blue Ridge, Botetourt County, Virginia,
United States, 24064



Total Area: 3094 sq. ft

Basement: 683 sq. ft, 1st Floor: 1384 sq. ft, 2nd Floor: 1027 sq. ft

Excluded: Utility 323 sq. ft, Fireplace 30 sq. ft, Garage 490 sq. ft, Porch 163 sq. ft, Walls: 262 sq. ft

Property summary

 **3** Floors

 **3** Bedrooms

 **3** Bathrooms

Home data report

**58 Stonehaven Lane, Blue Ridge, Botetourt County, Virginia,
United States, 24064**

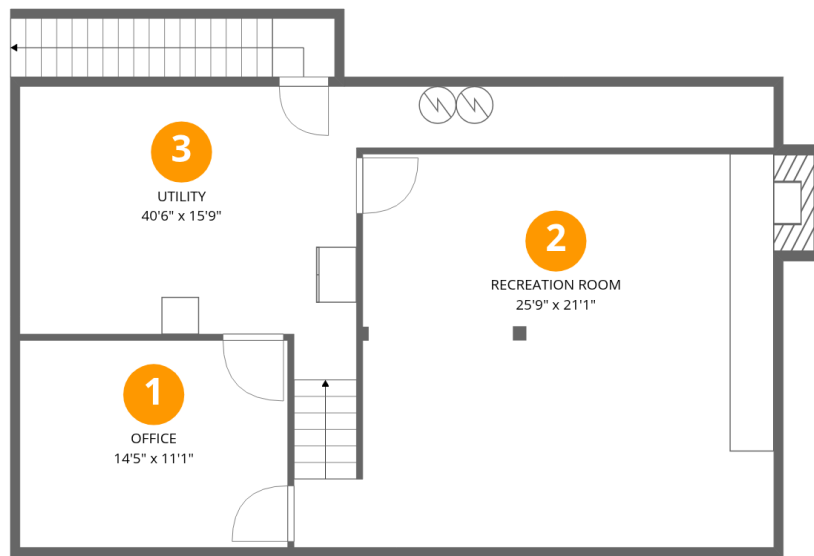


1
Half baths



1
Garages

58 Stonehaven Lane, Blue Ridge, Botetourt County, Virginia,
United States, 24064



Room dimensions

Floor 1 Below grade

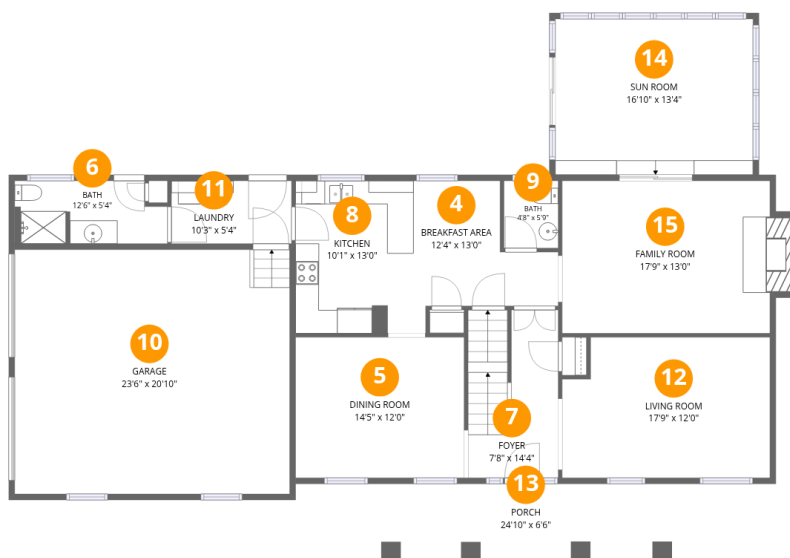
Total:683sqft

Excluded: 337sqft

#		Dimensions	sqft	Counted as living area
1	Office	14'5" x 11'1"	160 sq. ft	Yes
2	Recreation Room	25'9" x 21'1"	509 sq. ft	Yes
3	Utility	40'6" x 15'9"	323 sq. ft	No

Home data report

58 Stonehaven Lane, Blue Ridge, Botetourt County, Virginia,
United States, 24064



Room dimensions

Floor 2

Total:1384sqft Excluded: 669sqft

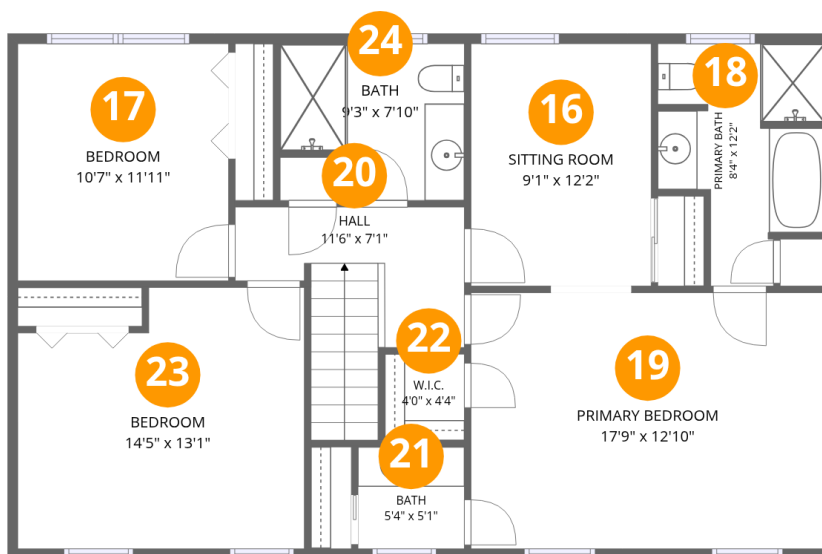
#		Dimensions	sqft	Counted as living area
4	Breakfast Area	12'4" x 13'0"	104 sq. ft	Yes
5	Dining Room	14'5" x 12'0"	173 sq. ft	Yes
6	Bath	12'6" x 5'4"	65 sq. ft	Yes
7	Foyer	7'8" x 14'4"	108 sq. ft	Yes
8	Kitchen	10'1" x 13'0"	131 sq. ft	Yes
9	Bath	4'8" x 5'9"	27 sq. ft	Yes
10	Garage	23'6" x 20'10"	490 sq. ft	No
11	Laundry	10'3" x 5'4"	55 sq. ft	Yes
12	Living Room	17'9" x 12'0"	204 sq. ft	Yes
13	Porch	24'10" x 6'6"	163 sq. ft	No
14	Sun Room	16'10" x 13'4"	225 sq. ft	Yes

Home data report

**58 Stonehaven Lane, Blue Ridge, Botetourt County, Virginia,
United States, 24064**

#		Dimensions	sqft	Counted as living area
15	Family Room	17'9" x 13'0"	245 sq. ft	Yes

58 Stonehaven Lane, Blue Ridge, Botetourt County, Virginia, United States, 24064



Room dimensions

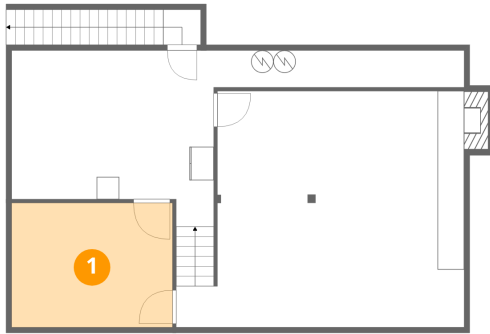
Floor 3

Total:1027sqft Excluded: 0sqft

#		Dimensions	sqft	Counted as living area
16	Sitting Room	9'1" x 12'2"	110 sq. ft	Yes
17	Bedroom	10'7" x 11'11"	126 sq. ft	Yes
18	Primary Bath	8'4" x 12'2"	80 sq. ft	Yes
19	Primary Bedroom	17'9" x 12'10"	228 sq. ft	Yes
20	Hall	11'6" x 7'1"	84 sq. ft	Yes
21	Bath	5'4" x 5'1"	27 sq. ft	Yes
22	W.I.C.	4'0" x 4'4"	17 sq. ft	Yes
23	Bedroom	14'5" x 13'1"	174 sq. ft	Yes
24	Bath	9'3" x 7'10"	64 sq. ft	Yes

58 Stonehaven Lane, Blue Ridge, Botetourt County, Virginia,
United States, 24064

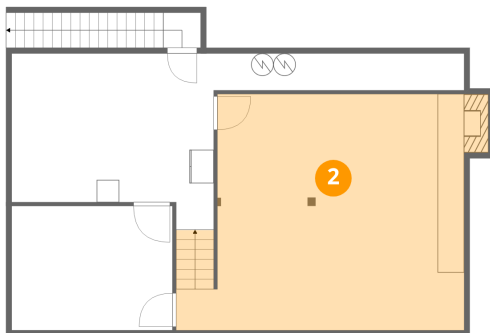
1 Floor 1 - Office



Dimensions: 14'5" x 11'1"
Area: 160 sq. ft
Counted as living area: Yes

Heated: Yes
Finished: Yes
Enclosed: Yes
Contiguous: Yes
Permitted: Yes
Wet space: No
Addition: No
Conversion: No

2 Floor 1 - Recreation Room

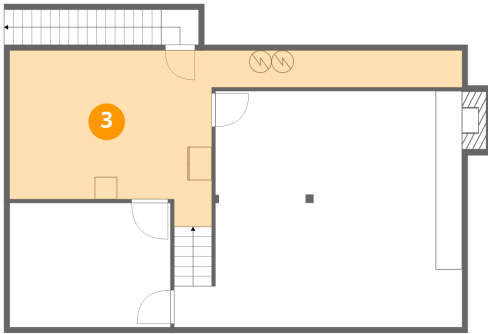


Dimensions: 25'9" x 21'1"
Area: 509 sq. ft
Counted as living area: Yes

Heated: Yes
Finished: Yes
Enclosed: Yes
Contiguous: Yes
Permitted: Yes
Wet space: No
Addition: No
Conversion: No

58 Stonehaven Lane, Blue Ridge, Botetourt County, Virginia,
United States, 24064

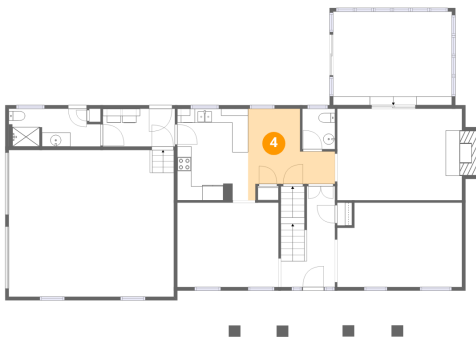
3 Floor 1 - Utility



Dimensions: 40'6" x 15'9"
Area: 323 sq. ft
Counted as living area: No

Heated: Yes
Finished: No
Enclosed: Yes
Contiguous: Yes
Permitted: Yes
Wet space: No
Addition: No
Conversion: No

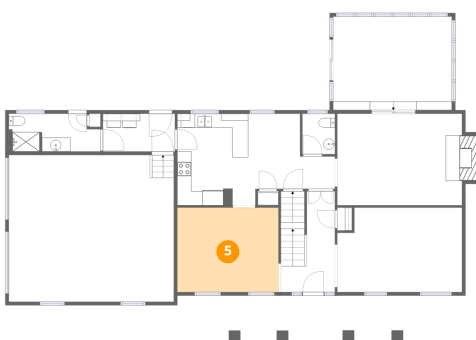
4 Floor 2 - Breakfast Area



Dimensions: 12'4" x 13'0"
Area: 104 sq. ft
Counted as living area: Yes

Heated: Yes
Finished: Yes
Enclosed: Yes
Contiguous: Yes
Permitted: Yes
Wet space: No
Addition: No
Conversion: No

5 Floor 2 - Dining Room

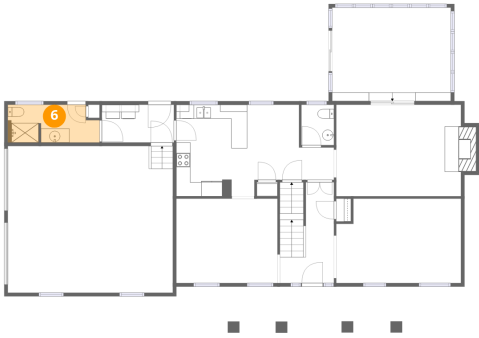


Dimensions: 14'5" x 12'0"
Area: 173 sq. ft
Counted as living area: Yes

Heated: Yes
Finished: Yes
Enclosed: Yes
Contiguous: Yes
Permitted: Yes
Wet space: No
Addition: No
Conversion: No

58 Stonehaven Lane, Blue Ridge, Botetourt County, Virginia,
United States, 24064

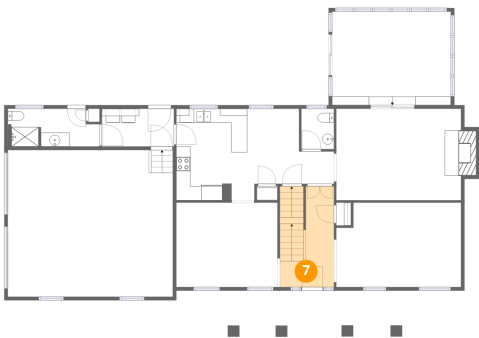
6 Floor 2 - Bath



Dimensions: 12'6" x 5'4"
Area: 65 sq. ft
Counted as living area: Yes

Heated: Yes
Finished: Yes
Enclosed: Yes
Contiguous: Yes
Permitted: Yes
Wet space: Yes
Addition: No
Conversion: No

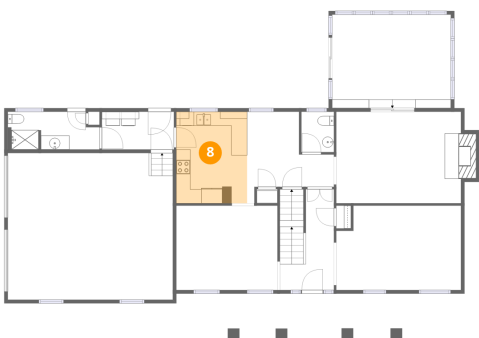
7 Floor 2 - Foyer



Dimensions: 7'8" x 14'4"
Area: 108 sq. ft
Counted as living area: Yes

Heated: Yes
Finished: Yes
Enclosed: Yes
Contiguous: Yes
Permitted: Yes
Wet space: No
Addition: No
Conversion: No

8 Floor 2 - Kitchen

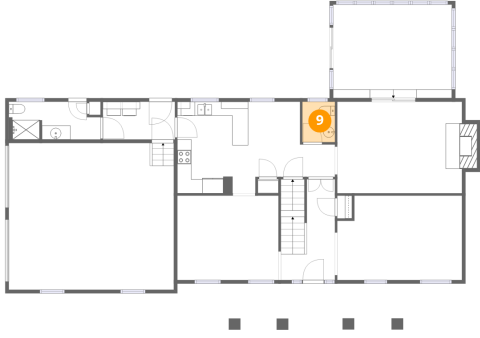


Dimensions: 10'1" x 13'0"
Area: 131 sq. ft
Counted as living area: Yes

Heated: Yes
Finished: Yes
Enclosed: Yes
Contiguous: Yes
Permitted: Yes
Wet space: No
Addition: No
Conversion: No

58 Stonehaven Lane, Blue Ridge, Botetourt County, Virginia,
United States, 24064

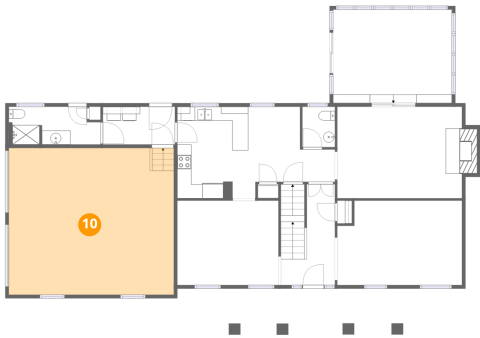
9 Floor 2 - Bath



Dimensions: 4'8" x 5'9"
Area: 27 sq. ft
Counted as living area: Yes

Heated: Yes
Finished: Yes
Enclosed: Yes
Contiguous: Yes
Permitted: Yes
Wet space: Yes
Addition: No
Conversion: No

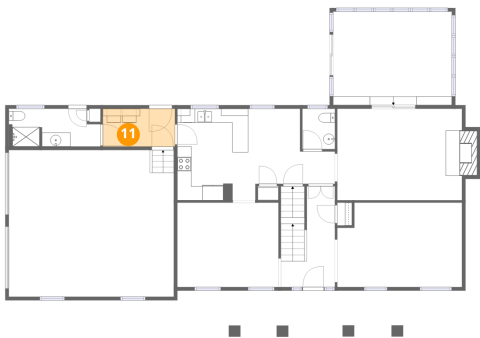
10 Floor 2 - Garage



Dimensions: 23'6" x 20'10"
Area: 490 sq. ft
Counted as living area: No

Heated: No
Finished: No
Enclosed: Yes
Contiguous: Yes
Permitted: Yes
Wet space: No
Addition: No
Conversion: No

11 Floor 2 - Laundry



Dimensions: 10'3" x 5'4"
Area: 55 sq. ft
Counted as living area: Yes

Heated: Yes
Finished: Yes
Enclosed: Yes
Contiguous: Yes
Permitted: Yes
Wet space: No
Addition: No
Conversion: No

58 Stonehaven Lane, Blue Ridge, Botetourt County, Virginia,
United States, 24064

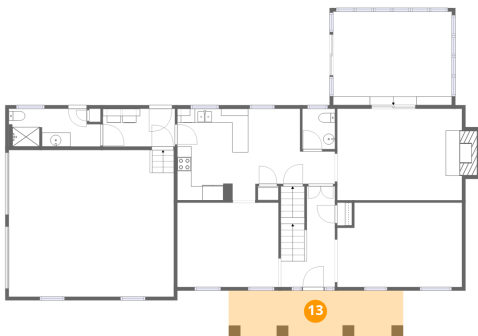
12 Floor 2 - Living Room



Dimensions: 17'9" x 12'0"
Area: 204 sq. ft
Counted as living area: Yes

Heated: Yes
Finished: Yes
Enclosed: Yes
Contiguous: Yes
Permitted: Yes
Wet space: No
Addition: No
Conversion: No

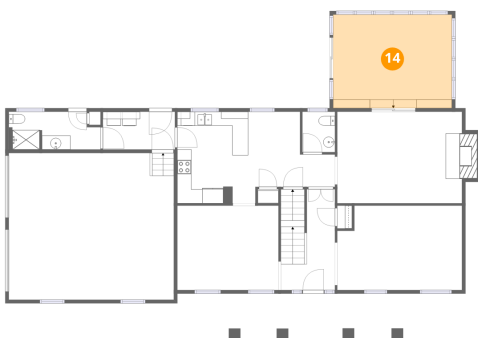
13 Floor 2 - Porch



Dimensions: 24'10" x 6'6"
Area: 163 sq. ft
Counted as living area: No

Heated: No
Finished: No
Enclosed: No
Contiguous: Yes
Permitted: Yes
Wet space: No
Addition: No
Conversion: No

14 Floor 2 - Sun Room

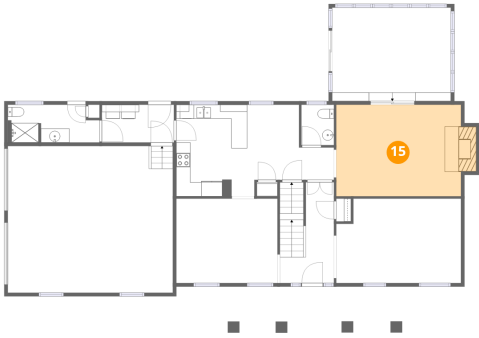


Dimensions: 16'10" x 13'4"
Area: 225 sq. ft
Counted as living area: Yes

Heated: Yes
Finished: Yes
Enclosed: Yes
Contiguous: Yes
Permitted: Yes
Wet space: No
Addition: No
Conversion: No

58 Stonehaven Lane, Blue Ridge, Botetourt County, Virginia,
United States, 24064

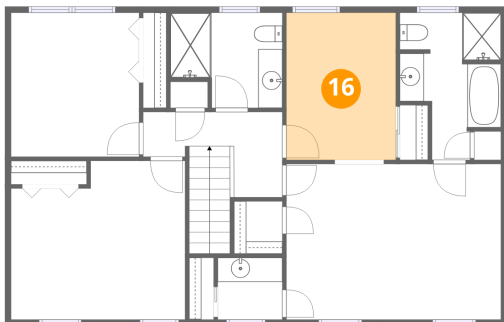
15 Floor 2 - Family Room



Dimensions: 17'9" x 13'0"
Area: 245 sq. ft
Counted as living area: Yes

Heated: Yes
Finished: Yes
Enclosed: Yes
Contiguous: Yes
Permitted: Yes
Wet space: No
Addition: No
Conversion: No

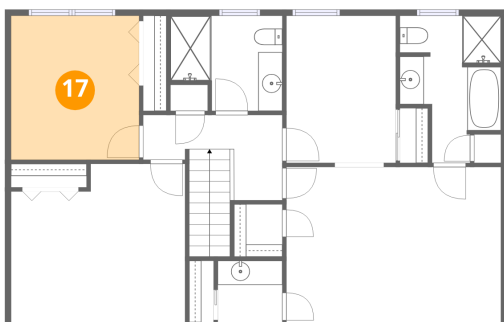
16 Floor 3 - Sitting Room



Dimensions: 9'1" x 12'2"
Area: 110 sq. ft
Counted as living area: Yes

Heated: Yes
Finished: Yes
Enclosed: Yes
Contiguous: Yes
Permitted: Yes
Wet space: No
Addition: No
Conversion: No

17 Floor 3 - Bedroom

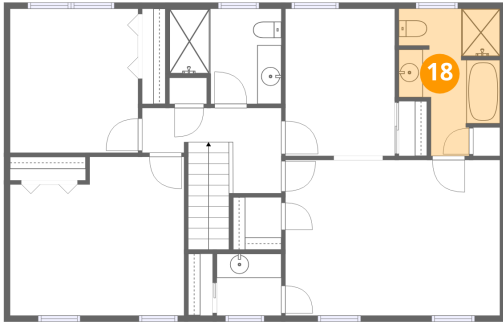


Dimensions: 10'7" x 11'11"
Area: 126 sq. ft
Counted as living area: Yes

Heated: Yes
Finished: Yes
Enclosed: Yes
Contiguous: Yes
Permitted: Yes
Wet space: No
Addition: No
Conversion: No

58 Stonehaven Lane, Blue Ridge, Botetourt County, Virginia,
United States, 24064

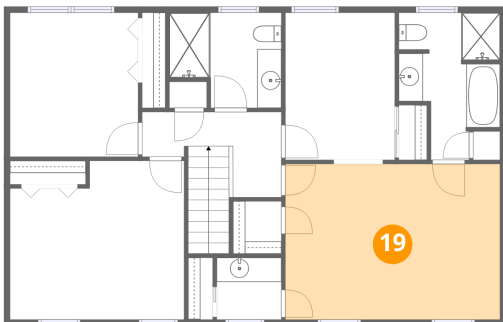
18 Floor 3 - Primary Bath



Dimensions: 8'4" x 12'2"
Area: 80 sq. ft
Counted as living area: Yes

Heated: Yes
Finished: Yes
Enclosed: Yes
Contiguous: Yes
Permitted: Yes
Wet space: Yes
Addition: No
Conversion: No

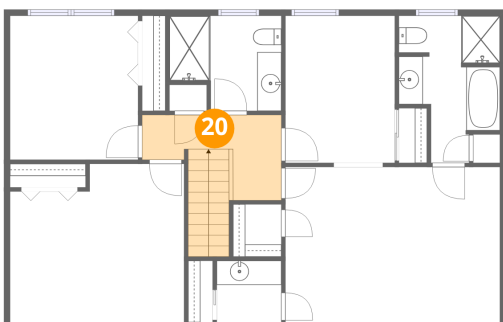
19 Floor 3 - Primary Bedroom



Dimensions: 17'9" x 12'10"
Area: 228 sq. ft
Counted as living area: Yes

Heated: Yes
Finished: Yes
Enclosed: Yes
Contiguous: Yes
Permitted: Yes
Wet space: No
Addition: No
Conversion: No

20 Floor 3 - Hall

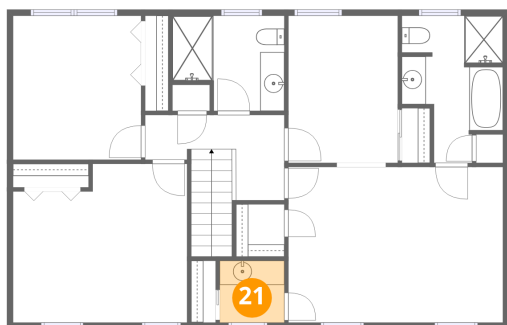


Dimensions: 11'6" x 7'1"
Area: 84 sq. ft
Counted as living area: Yes

Heated: Yes
Finished: Yes
Enclosed: Yes
Contiguous: Yes
Permitted: Yes
Wet space: No
Addition: No
Conversion: No

58 Stonehaven Lane, Blue Ridge, Botetourt County, Virginia,
United States, 24064

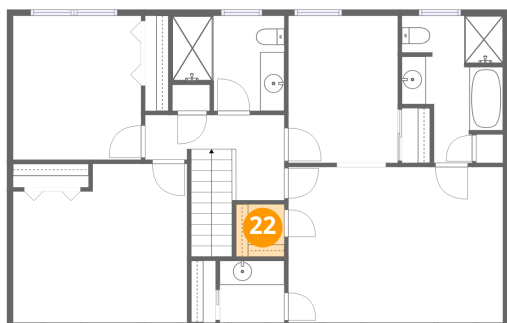
21 Floor 3 - Bath



Dimensions: 5'4" x 5'1"
Area: 27 sq. ft
Counted as living area: Yes

Heated: Yes
Finished: Yes
Enclosed: Yes
Contiguous: Yes
Permitted: Yes
Wet space: Yes
Addition: No
Conversion: No

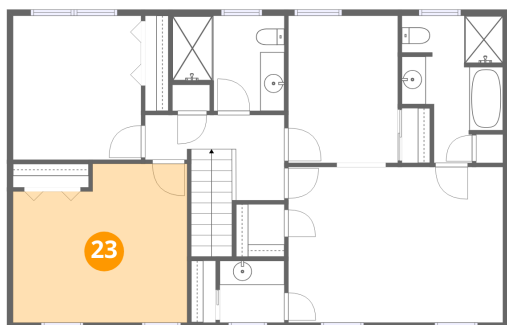
22 Floor 3 - W.I.C.



Dimensions: 4'0" x 4'4"
Area: 17 sq. ft
Counted as living area: Yes

Heated: Yes
Finished: Yes
Enclosed: Yes
Contiguous: Yes
Permitted: Yes
Wet space: No
Addition: No
Conversion: No

23 Floor 3 - Bedroom

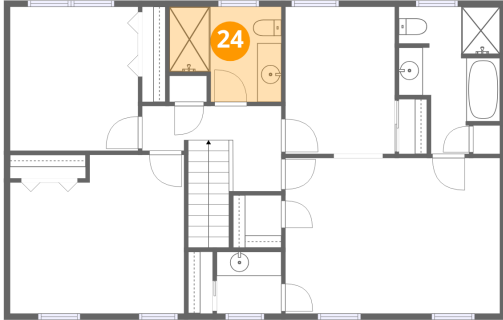


Dimensions: 14'5" x 13'1"
Area: 174 sq. ft
Counted as living area: Yes

Heated: Yes
Finished: Yes
Enclosed: Yes
Contiguous: Yes
Permitted: Yes
Wet space: No
Addition: No
Conversion: No

58 Stonehaven Lane, Blue Ridge, Botetourt County, Virginia,
United States, 24064

24 Floor 3 - Bath



Dimensions: 9'3" x 7'10"
Area: 64 sq. ft
Counted as living area: Yes

Heated: Yes
Finished: Yes
Enclosed: Yes
Contiguous: Yes
Permitted: Yes
Wet space: Yes
Addition: No
Conversion: No