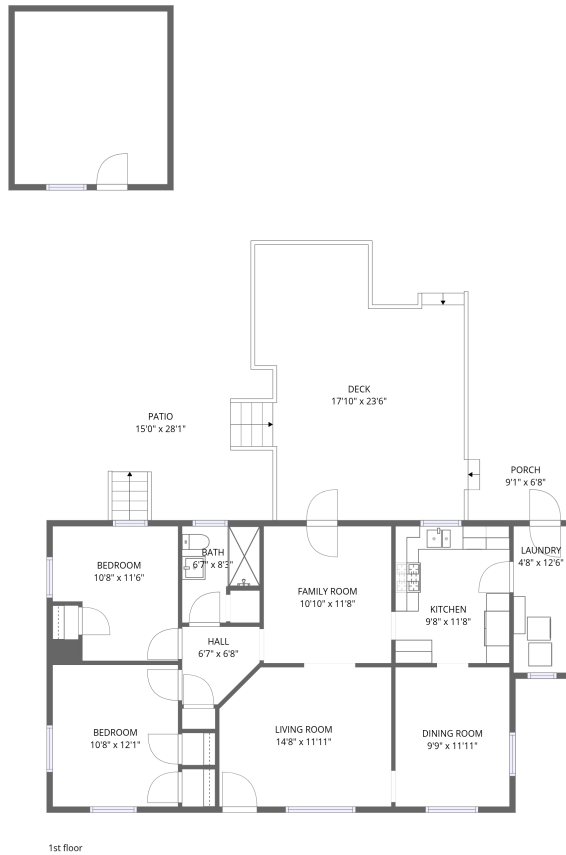


Home data report

903 Marston Street, Salem, Virginia 24153, United States




Total Area: 1186 sq. ft

1st Floor: 1186 sq. ft

Excluded: Porch 58 sq. ft, Deck 373 sq. ft, Patio 182 sq. ft, Walls: 98 sq. ft

Property summary

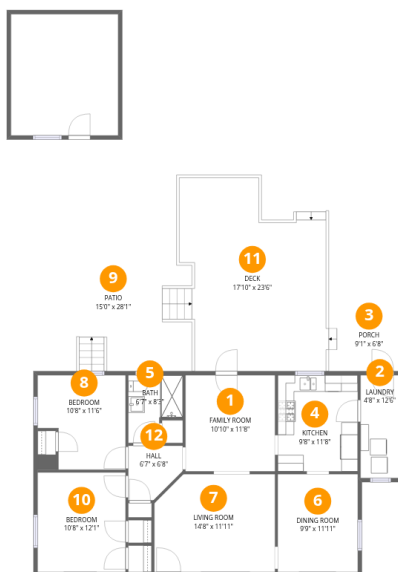
 **1** Floors

 **2** Bedrooms

 **1** Bathrooms

Home data report

903 Marston Street, Salem, Virginia 24153, United States



Room dimensions

Floor 1

Total: 1186sqft Excluded: 613sqft

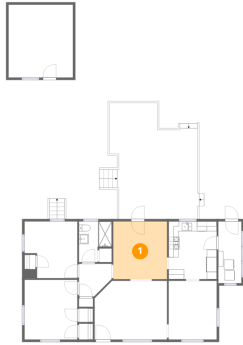
#		Dimensions	sqft	Counted as living area
1	Family Room	10'10" x 11'8"	127 sq. ft	Yes
2	Laundry	4'8" x 12'6"	59 sq. ft	Yes
3	Porch	9'1" x 6'8"	60 sq. ft	No
4	Kitchen	9'8" x 11'8"	113 sq. ft	Yes
5	Bath	6'7" x 8'3"	54 sq. ft	Yes
6	Dining Room	9'9" x 11'11"	116 sq. ft	Yes
7	Living Room	14'8" x 11'11"	175 sq. ft	Yes
8	Bedroom	10'8" x 11'6"	123 sq. ft	Yes
9	Patio	15'0" x 28'1"	421 sq. ft	No
10	Bedroom	10'8" x 12'1"	129 sq. ft	Yes
11	Deck	17'10" x 23'6"	419 sq. ft	No

Home data report

903 Marston Street, Salem, Virginia 24153, United States

#		Dimensions	sqft	Counted as living area
12	Hall	6'7" x 6'8"	44 sq. ft	Yes

1 Floor 1 - Family Room



Dimensions: 10'10" x 11'8"
Area: 127 sq. ft
Counted as living area: Yes

Heated: Yes
Finished: Yes
Enclosed: Yes
Contiguous: Yes
Permitted: Yes
Wet space: No
Addition: No
Conversion: No

2 Floor 1 - Laundry



Dimensions: 4'8" x 12'6"
Area: 59 sq. ft
Counted as living area: Yes

Heated: Yes
Finished: Yes
Enclosed: Yes
Contiguous: Yes
Permitted: Yes
Wet space: No
Addition: No
Conversion: No

3 Floor 1 - Porch



Dimensions: 9'1" x 6'8"
Area: 60 sq. ft
Counted as living area: No

Heated: No
Finished: No
Enclosed: No
Contiguous: Yes
Permitted: Yes
Wet space: No
Addition: No
Conversion: No

4 Floor 1 - Kitchen



Dimensions: 9'8" x 11'8"
Area: 113 sq. ft
Counted as living area: Yes

Heated: Yes
Finished: Yes
Enclosed: Yes
Contiguous: Yes
Permitted: Yes
Wet space: No
Addition: No
Conversion: No

5 Floor 1 - Bath



Dimensions: 6'7" x 8'3"
Area: 54 sq. ft
Counted as living area: Yes

Heated: Yes
Finished: Yes
Enclosed: Yes
Contiguous: Yes
Permitted: Yes
Wet space: Yes
Addition: No
Conversion: No

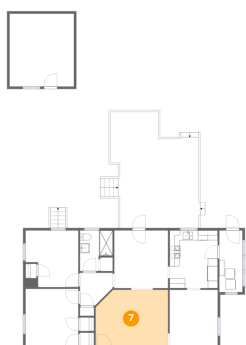
6 Floor 1 - Dining Room



Dimensions: 9'9" x 11'11"
Area: 116 sq. ft
Counted as living area: Yes

Heated: Yes
Finished: Yes
Enclosed: Yes
Contiguous: Yes
Permitted: Yes
Wet space: No
Addition: No
Conversion: No

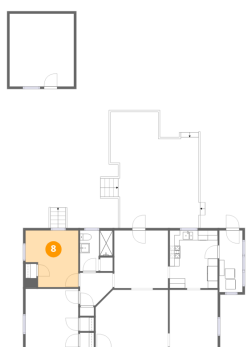
7 Floor 1 - Living Room



Dimensions: 14'8" x 11'11"
Area: 175 sq. ft
Counted as living area: Yes

Heated: Yes
Finished: Yes
Enclosed: Yes
Contiguous: Yes
Permitted: Yes
Wet space: No
Addition: No
Conversion: No

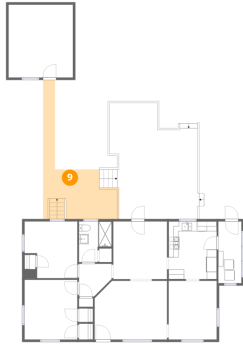
8 Floor 1 - Bedroom



Dimensions: 10'8" x 11'6"
Area: 123 sq. ft
Counted as living area: Yes

Heated: Yes
Finished: Yes
Enclosed: Yes
Contiguous: Yes
Permitted: Yes
Wet space: No
Addition: No
Conversion: No

9 Floor 1 - Patio



Dimensions: 15'0" x 28'1"
Area: 421 sq. ft
Counted as living area: No

Heated: No
Finished: No
Enclosed: No
Contiguous: Yes
Permitted: Yes
Wet space: No
Addition: No
Conversion: No

10 Floor 1 - Bedroom



Dimensions: 10'8" x 12'1"
Area: 129 sq. ft
Counted as living area: Yes

Heated: Yes
Finished: Yes
Enclosed: Yes
Contiguous: Yes
Permitted: Yes
Wet space: No
Addition: No
Conversion: No

11 Floor 1 - Deck



Dimensions: 17'10" x 23'6"
Area: 419 sq. ft
Counted as living area: No

Heated: No
Finished: No
Enclosed: No
Contiguous: Yes
Permitted: Yes
Wet space: No
Addition: No
Conversion: No

12 Floor 1 - Hall



Dimensions: 6'7" x 6'8"
Area: 44 sq. ft
Counted as living area: Yes

Heated: Yes
Finished: Yes
Enclosed: Yes
Contiguous: Yes
Permitted: Yes
Wet space: No
Addition: No
Conversion: No