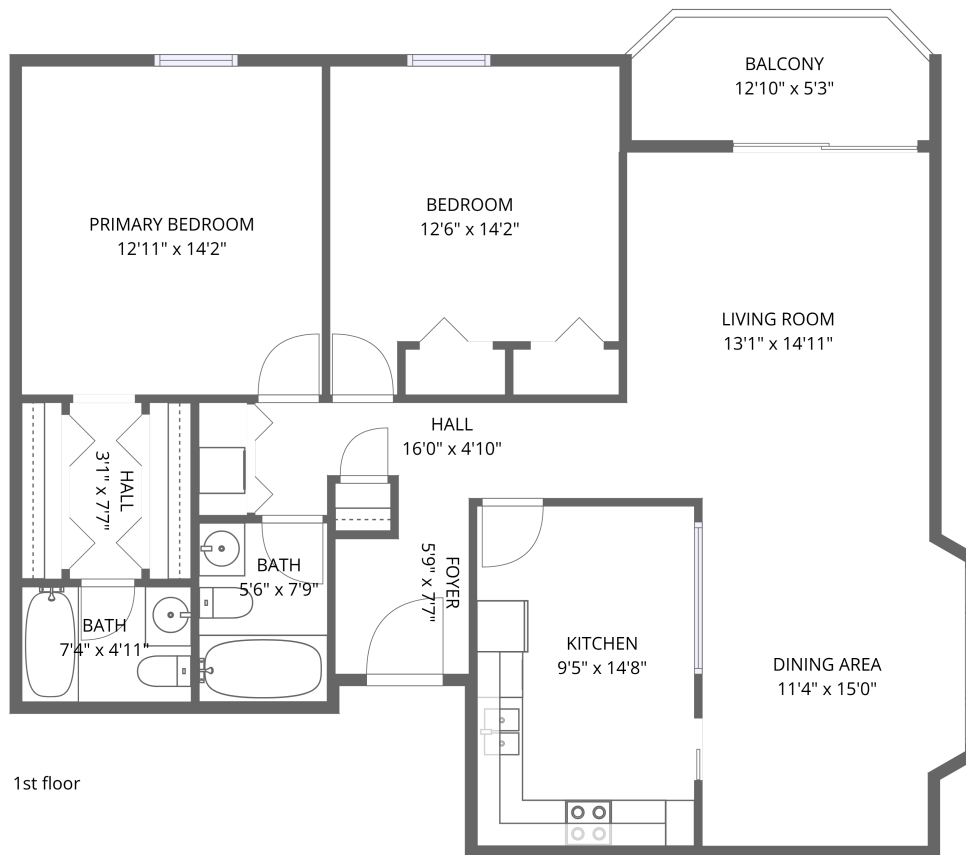


## Home data report

**5260 Crossbow Circle, Roanoke, Virginia 24018, United States, 1E**



**Total Area: 1151 sq. ft**

1st Floor: 1151 sq. ft

Excluded: Balcony 65 sq. ft, Walls: 77 sq. ft

## Property summary

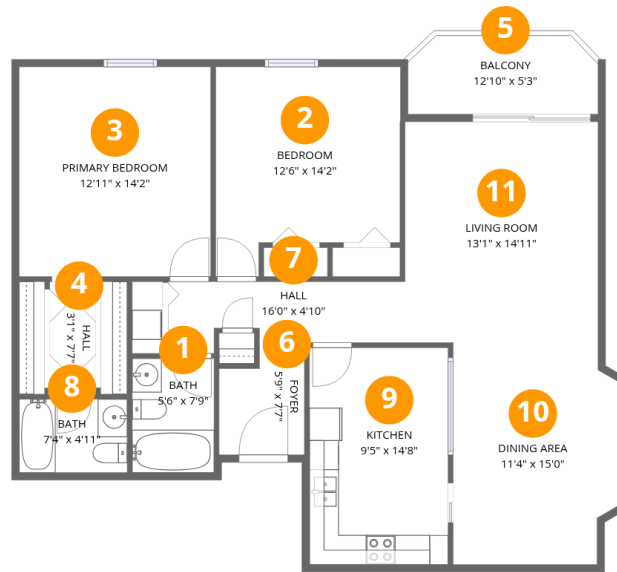
 **1** Floors

 **2** Bedrooms

 **2** Bathrooms

Home data report

5260 Crossbow Circle, Roanoke, Virginia 24018, United States, 1E



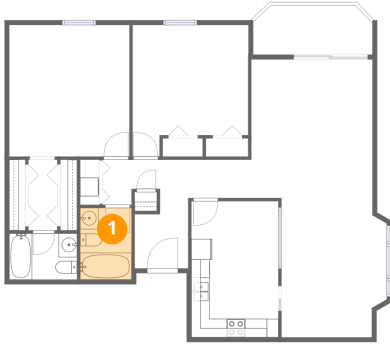
## Room dimensions

Floor 1

Total:1151sqft Excluded: 65sqft

#		Dimensions	sqft	Counted as living area
1	Bath	5'6" x 7'9"	43 sq. ft	Yes
2	Bedroom	12'6" x 14'2"	177 sq. ft	Yes
3	Primary Bedroom	12'11" x 14'2"	184 sq. ft	Yes
4	Hall	3'1" x 7'7"	24 sq. ft	Yes
5	Balcony	12'10" x 5'3"	68 sq. ft	No
6	Foyer	5'9" x 7'7"	44 sq. ft	Yes
7	Hall	16'0" x 4'10"	78 sq. ft	Yes
8	Bath	7'4" x 4'11"	36 sq. ft	Yes
9	Kitchen	9'5" x 14'8"	137 sq. ft	Yes
10	Dining Area	11'4" x 15'0"	170 sq. ft	Yes
11	Living Room	13'1" x 14'11"	195 sq. ft	Yes

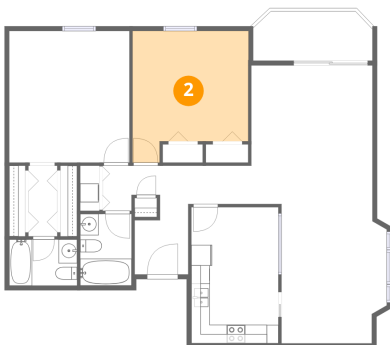
## 1 Floor 1 - Bath



Dimensions: 5'6" x 7'9"  
Area: 43 sq. ft  
Counted as living area: Yes

Heated: Yes  
Finished: Yes  
Enclosed: Yes  
Contiguous: Yes  
Permitted: Yes  
Wet space: Yes  
Addition: No  
Conversion: No

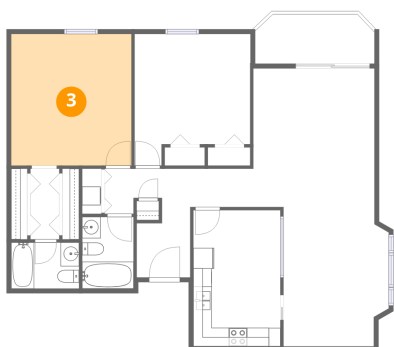
## 2 Floor 1 - Bedroom



Dimensions: 12'6" x 14'2"  
Area: 177 sq. ft  
Counted as living area: Yes

Heated: Yes  
Finished: Yes  
Enclosed: Yes  
Contiguous: Yes  
Permitted: Yes  
Wet space: No  
Addition: No  
Conversion: No

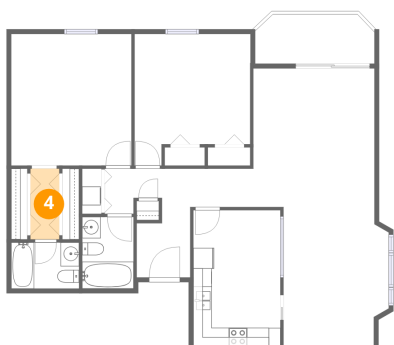
### 3 Floor 1 - Primary Bedroom



Dimensions: 12'11" x 14'2"  
Area: 184 sq. ft  
Counted as living area: Yes

Heated: Yes  
Finished: Yes  
Enclosed: Yes  
Contiguous: Yes  
Permitted: Yes  
Wet space: No  
Addition: No  
Conversion: No

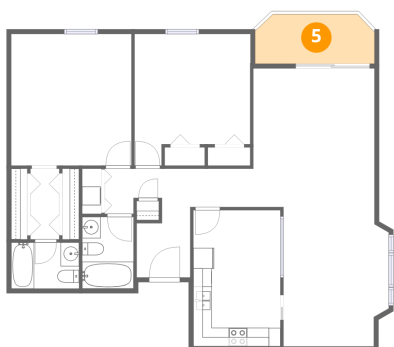
### 4 Floor 1 - Hall



Dimensions: 3'1" x 7'7"  
Area: 24 sq. ft  
Counted as living area: Yes

Heated: Yes  
Finished: Yes  
Enclosed: Yes  
Contiguous: Yes  
Permitted: Yes  
Wet space: No  
Addition: No  
Conversion: No

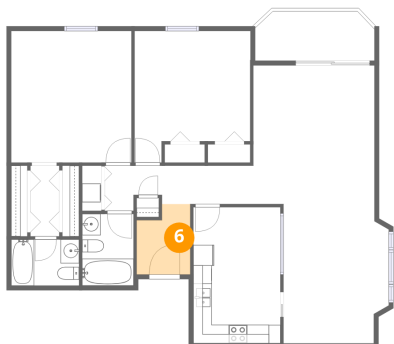
### 5 Floor 1 - Balcony



Dimensions: 12'10" x 5'3"  
Area: 68 sq. ft  
Counted as living area: No

Heated: No  
Finished: No  
Enclosed: No  
Contiguous: Yes  
Permitted: Yes  
Wet space: No  
Addition: No  
Conversion: No

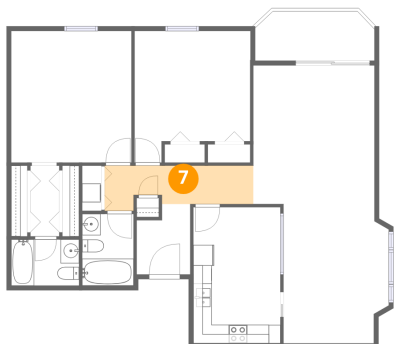
### 6 Floor 1 - Foyer



Dimensions: 5'9" x 7'7"  
Area: 44 sq. ft  
Counted as living area: Yes

Heated: Yes  
Finished: Yes  
Enclosed: Yes  
Contiguous: Yes  
Permitted: Yes  
Wet space: No  
Addition: No  
Conversion: No

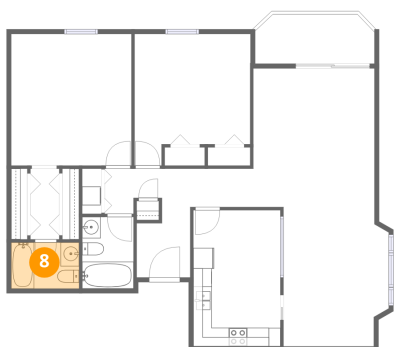
### 7 Floor 1 - Hall



Dimensions: 16'0" x 4'10"  
Area: 78 sq. ft  
Counted as living area: Yes

Heated: Yes  
Finished: Yes  
Enclosed: Yes  
Contiguous: Yes  
Permitted: Yes  
Wet space: No  
Addition: No  
Conversion: No

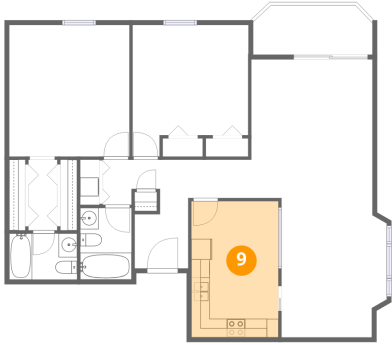
### 8 Floor 1 - Bath



Dimensions: 7'4" x 4'11"  
Area: 36 sq. ft  
Counted as living area: Yes

Heated: Yes  
Finished: Yes  
Enclosed: Yes  
Contiguous: Yes  
Permitted: Yes  
Wet space: Yes  
Addition: No  
Conversion: No

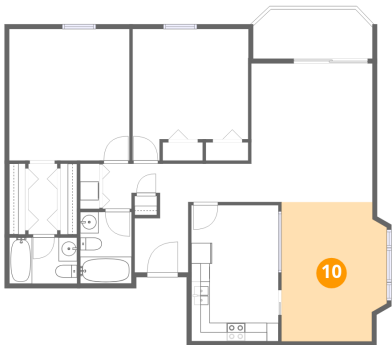
**9** Floor 1 - Kitchen



Dimensions: 9'5" x 14'8"  
Area: 137 sq. ft  
Counted as living area: Yes

Heated: Yes  
Finished: Yes  
Enclosed: Yes  
Contiguous: Yes  
Permitted: Yes  
Wet space: No  
Addition: No  
Conversion: No

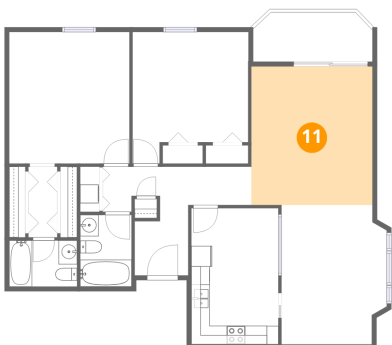
**10** Floor 1 - Dining Area



Dimensions: 11'4" x 15'0"  
Area: 170 sq. ft  
Counted as living area: Yes

Heated: Yes  
Finished: Yes  
Enclosed: Yes  
Contiguous: Yes  
Permitted: Yes  
Wet space: No  
Addition: No  
Conversion: No

**11** Floor 1 - Living Room



Dimensions: 13'1" x 14'11"  
Area: 195 sq. ft  
Counted as living area: Yes

Heated: Yes  
Finished: Yes  
Enclosed: Yes  
Contiguous: Yes  
Permitted: Yes  
Wet space: No  
Addition: No  
Conversion: No