

Home report

5 Ames Road, Brookline, Hillsborough County, New Hampshire,
United States, 03033



Total Area: 2703 sq. ft
Below Ground: 1232 sq. ft, Floor 2: 1471 sq. ft
Excluded: Storage 75 sq. ft, Utility 131 sq. ft, Undefined 33 sq. ft, Garage 372 sq. ft, Deck 157 sq. ft, Walls: 211 sq. ft

Property summary

 **2** Floors

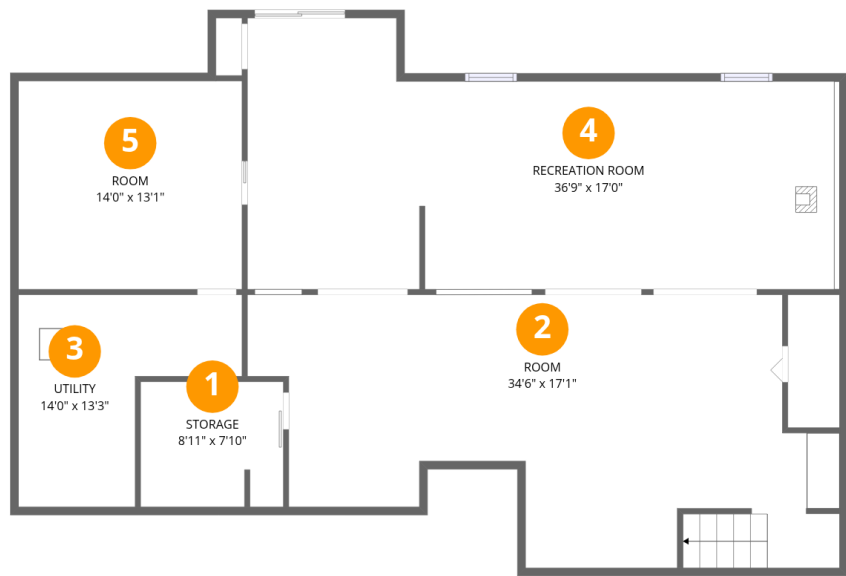
 **3** Bedrooms

 **2** Bathrooms

 **1** Garages

Home report

5 Ames Road, Brookline, Hillsborough County, New Hampshire,
United States, 03033



Room dimensions

Floor 1 Below ground Total:1232sqft Excluded: 239sqft

#		Max Dimensions	sqft	Included
1	Storage	8'11" x 7'10"	69 sq. ft	No
2	Room	34'6" x 17'1"	494 sq. ft	Yes
3	Utility	14'0" x 13'3"	131 sq. ft	No
4	Recreation Room	36'9" x 17'0"	521 sq. ft	Yes
5	Room	14'0" x 13'1"	183 sq. ft	Yes

Home report

5 Ames Road, Brookline, Hillsborough County, New Hampshire,
United States, 03033



Room dimensions

Floor 2 Total:1471sqft Excluded: 529sqft

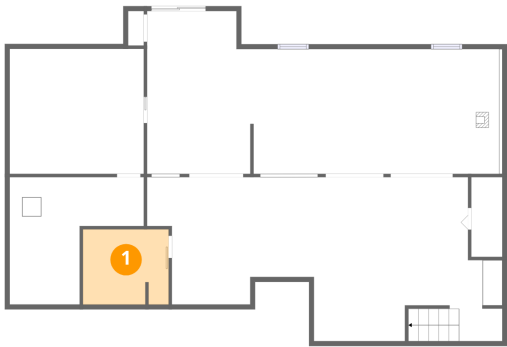
#		Max Dimensions	sqft	Included
6	Bedroom	12'2" x 10'1"	122 sq. ft	Yes
7	Deck	12'6" x 11'8"	157 sq. ft	No
8	Bath	7'3" x 10'0"	72 sq. ft	Yes
9	Bedroom	15'1" x 10'7"	142 sq. ft	Yes
10	Kitchen	11'7" x 13'3"	153 sq. ft	Yes
11	Hall	6'4" x 5'5"	28 sq. ft	Yes
12	Laundry	7'2" x 11'8"	64 sq. ft	Yes
13	Office	12'9" x 10'0"	127 sq. ft	Yes
14	Foyer	6'0" x 5'3"	32 sq. ft	Yes
15	W.I.C.	5'1" x 3'5"	17 sq. ft	Yes
16	Bath	8'9" x 5'5"	48 sq. ft	Yes

Home report

5 Ames Road, Brookline, Hillsborough County, New Hampshire,
United States, 03033

#		Max Dimensions	sqft	Included
17	W.I.C.	4'5" x 10'0"	44 sq. ft	Yes
18	Primary Bedroom	12'0" x 16'4"	197 sq. ft	Yes
19	Dining Area	11'7" x 7'1"	81 sq. ft	Yes
20	Living Room	12'1" x 18'6"	219 sq. ft	Yes
21	Garage	19'8" x 18'11"	372 sq. ft	No

1 Floor 1 - Storage



Max Dimensions: 8'11" x 7'10"
Calculated Area: 69 sq. ft
Included: No

Heated: No
Finished: No
Enclosed: No
Contiguous: Yes
Permitted: Yes
Wet space: No
Addition: No
Conversion: No

2 Floor 1 - Room



Max Dimensions: 34'6" x 17'1"
Calculated Area: 494 sq. ft
Included: Yes

Heated: Yes
Finished: Yes
Enclosed: Yes
Contiguous: Yes
Permitted: Yes
Wet space: No
Addition: No
Conversion: No

3 Floor 1 - Utility



Max Dimensions: 14'0" x 13'3"
Calculated Area: 131 sq. ft
Included: No

Heated: Yes
Finished: No
Enclosed: Yes
Contiguous: Yes
Permitted: Yes
Wet space: No
Addition: No
Conversion: No

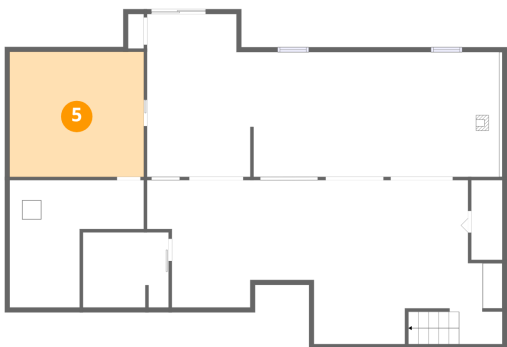
4 Floor 1 - Recreation Room



Max Dimensions: 36'9" x 17'0"
Calculated Area: 521 sq. ft
Included: Yes

Heated: Yes
Finished: Yes
Enclosed: Yes
Contiguous: Yes
Permitted: Yes
Wet space: No
Addition: No
Conversion: No

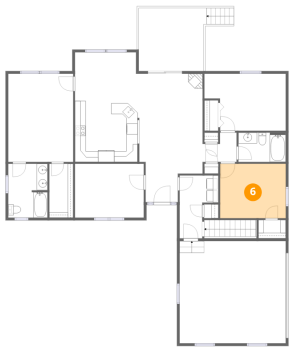
5 Floor 1 - Room



Max Dimensions: 14'0" x 13'1"
Calculated Area: 183 sq. ft
Included: Yes

Heated: Yes
Finished: Yes
Enclosed: Yes
Contiguous: Yes
Permitted: Yes
Wet space: No
Addition: No
Conversion: No

6 Floor 2 - Bedroom



Max Dimensions: 12'2" x 10'1"
Calculated Area: 122 sq. ft
Included: Yes

Heated: Yes
Finished: Yes
Enclosed: Yes
Contiguous: Yes
Permitted: Yes
Wet space: No
Addition: No
Conversion: No

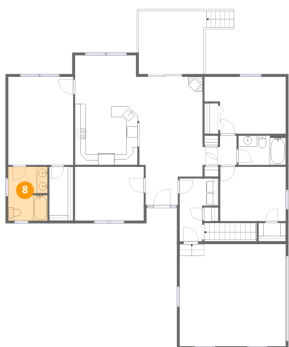
7 Floor 2 - Deck



Max Dimensions: 12'6" x 11'8"
Calculated Area: 157 sq. ft
Included: No

Heated: No
Finished: No
Enclosed: No
Contiguous: Yes
Permitted: Yes
Wet space: No
Addition: No
Conversion: No

8 Floor 2 - Bath

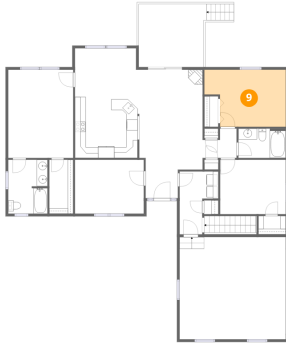


Max Dimensions: 7'3" x 10'0"
Calculated Area: 72 sq. ft
Included: Yes

Heated: Yes
Finished: Yes
Enclosed: Yes
Contiguous: Yes
Permitted: Yes
Wet space: Yes
Addition: No
Conversion: No

5 Ames Road, Brookline, Hillsborough County, New Hampshire,
United States, 03033

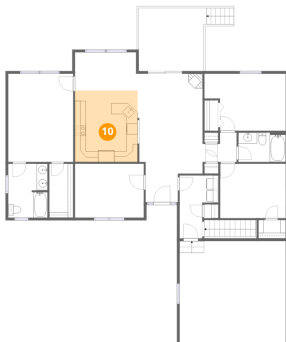
9 Floor 2 - Bedroom



Max Dimensions: 15'1" x 10'7"
Calculated Area: 142 sq. ft
Included: Yes

Heated: Yes
Finished: Yes
Enclosed: Yes
Contiguous: Yes
Permitted: Yes
Wet space: No
Addition: No
Conversion: No

10 Floor 2 - Kitchen



Max Dimensions: 11'7" x 13'3"
Calculated Area: 153 sq. ft
Included: Yes

Heated: Yes
Finished: Yes
Enclosed: Yes
Contiguous: Yes
Permitted: Yes
Wet space: No
Addition: No
Conversion: No

11 Floor 2 - Hall



Max Dimensions: 6'4" x 5'5"
Calculated Area: 28 sq. ft
Included: Yes

Heated: Yes
Finished: Yes
Enclosed: Yes
Contiguous: Yes
Permitted: Yes
Wet space: No
Addition: No
Conversion: No

5 Ames Road, Brookline, Hillsborough County, New Hampshire,
United States, 03033

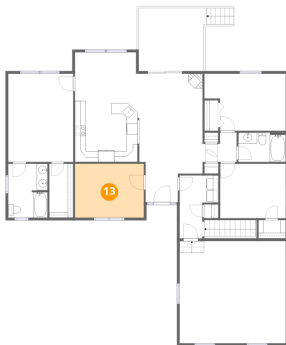
12 Floor 2 - Laundry



Max Dimensions: 7'2" x 11'8"
Calculated Area: 64 sq. ft
Included: Yes

Heated: Yes
Finished: Yes
Enclosed: Yes
Contiguous: Yes
Permitted: Yes
Wet space: No
Addition: No
Conversion: No

13 Floor 2 - Office



Max Dimensions: 12'9" x 10'0"
Calculated Area: 127 sq. ft
Included: Yes

Heated: Yes
Finished: Yes
Enclosed: Yes
Contiguous: Yes
Permitted: Yes
Wet space: No
Addition: No
Conversion: No

14 Floor 2 - Foyer



Max Dimensions: 6'0" x 5'3"
Calculated Area: 32 sq. ft
Included: Yes

Heated: Yes
Finished: Yes
Enclosed: Yes
Contiguous: Yes
Permitted: Yes
Wet space: No
Addition: No
Conversion: No

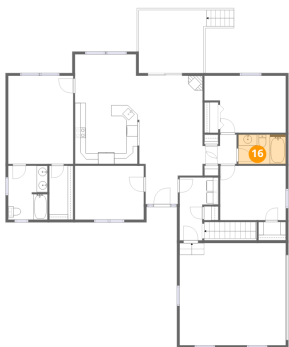
15 Floor 2 - W.I.C.



Max Dimensions: 5'1" x 3'5"
Calculated Area: 17 sq. ft
Included: Yes

Heated: Yes
Finished: Yes
Enclosed: Yes
Contiguous: Yes
Permitted: Yes
Wet space: No
Addition: No
Conversion: No

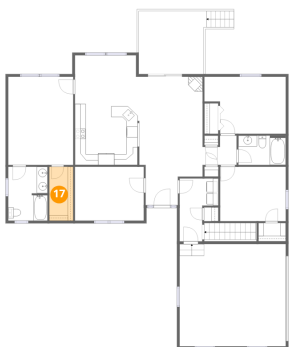
16 Floor 2 - Bath



Max Dimensions: 8'9" x 5'5"
Calculated Area: 48 sq. ft
Included: Yes

Heated: Yes
Finished: Yes
Enclosed: Yes
Contiguous: Yes
Permitted: Yes
Wet space: Yes
Addition: No
Conversion: No

17 Floor 2 - W.I.C.

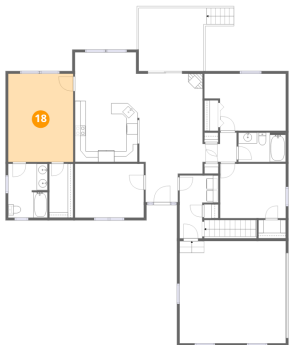


Max Dimensions: 4'5" x 10'0"
Calculated Area: 44 sq. ft
Included: Yes

Heated: Yes
Finished: Yes
Enclosed: Yes
Contiguous: Yes
Permitted: Yes
Wet space: No
Addition: No
Conversion: No

5 Ames Road, Brookline, Hillsborough County, New Hampshire,
United States, 03033

18 Floor 2 - Primary Bedroom



Max Dimensions: 12'0" x 16'4"
Calculated Area: 197 sq. ft
Included: Yes

Heated: Yes
Finished: Yes
Enclosed: Yes
Contiguous: Yes
Permitted: Yes
Wet space: No
Addition: No
Conversion: No

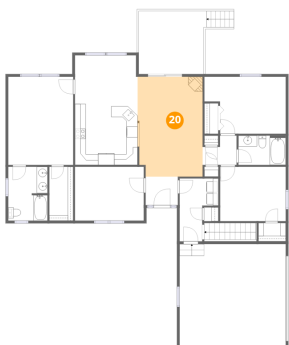
19 Floor 2 - Dining Area



Max Dimensions: 11'7" x 7'1"
Calculated Area: 81 sq. ft
Included: Yes

Heated: Yes
Finished: Yes
Enclosed: Yes
Contiguous: Yes
Permitted: Yes
Wet space: No
Addition: No
Conversion: No

20 Floor 2 - Living Room

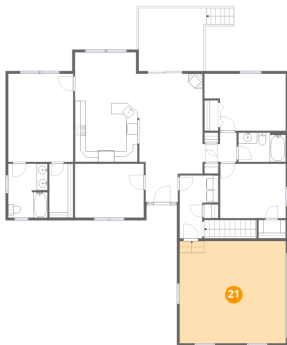


Max Dimensions: 12'1" x 18'6"
Calculated Area: 219 sq. ft
Included: Yes

Heated: Yes
Finished: Yes
Enclosed: Yes
Contiguous: Yes
Permitted: Yes
Wet space: No
Addition: No
Conversion: No

5 Ames Road, Brookline, Hillsborough County, New Hampshire,
United States, 03033

21 Floor 2 - Garage



Max Dimensions: 19'8" x 18'11"
Calculated Area: 372 sq. ft
Included: No

Heated: No
Finished: No
Enclosed: Yes
Contiguous: Yes
Permitted: Yes
Wet space: No
Addition: No
Conversion: No