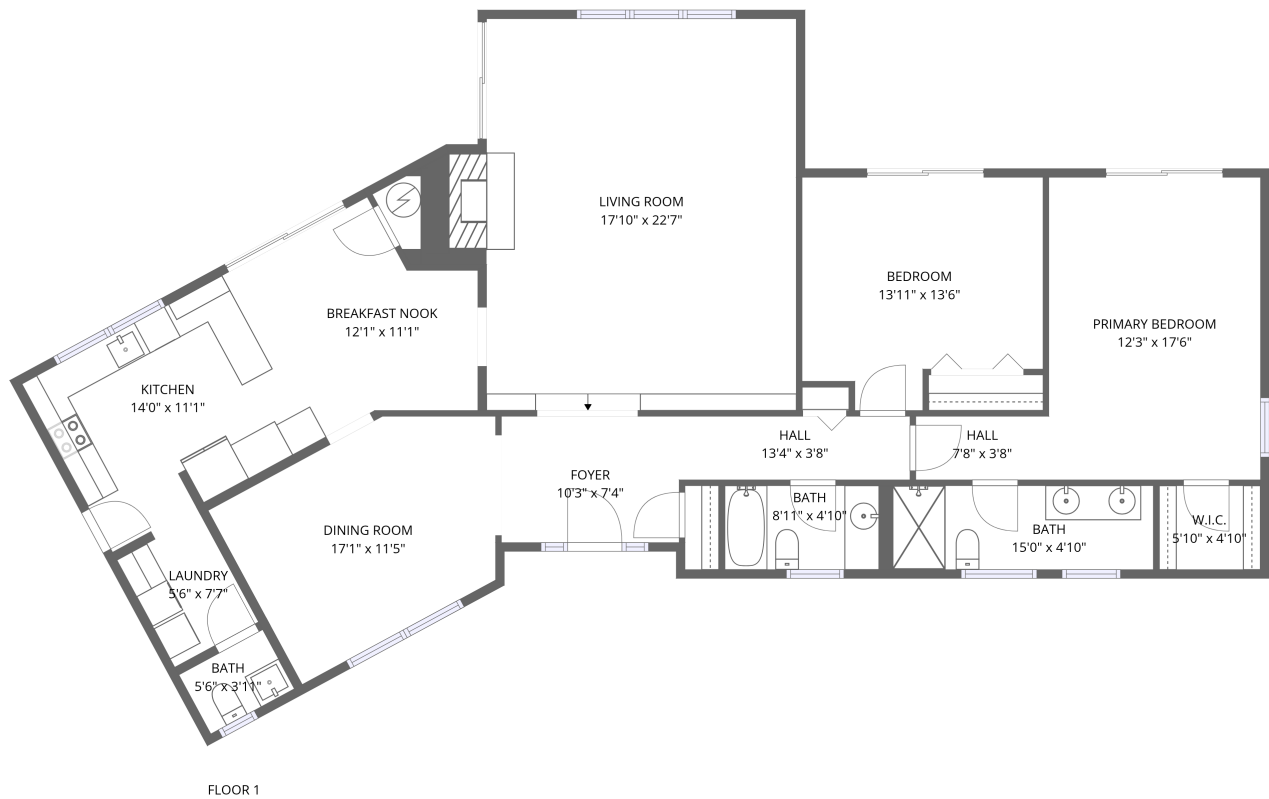


Home data report

128 Riverlake Drive, Shelbyville, Bedford County,
Tennessee, United States, 37160



Total Area: 1715 sq. ft

Floor 1: 1715 sq. ft

Excluded: Walls: 103 sq. ft

Property summary



1 Floors



2 Bedrooms



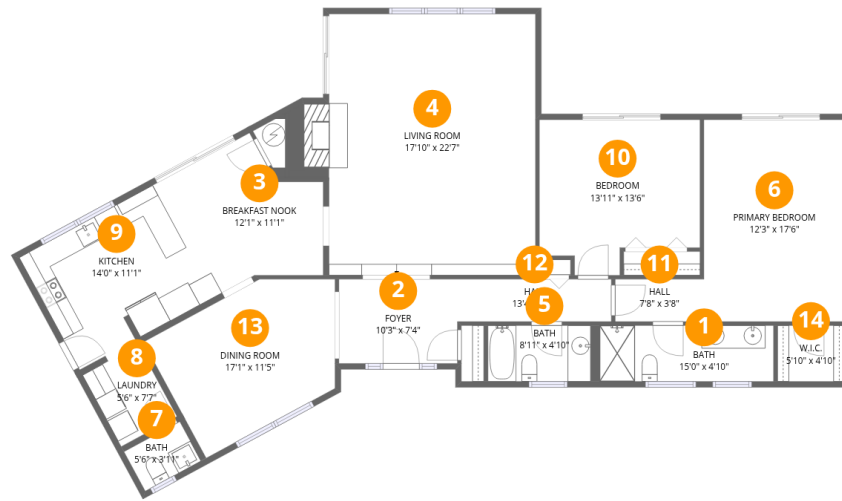
2 Bathrooms



1 Half baths

Scan captured on Thu, 30 Oct 2025 18:12:31 GMT

FLOOR PLAN CREATED BY CUBICASA APP. MEASUREMENTS DEEMED HIGHLY RELIABLE BUT NOT GUARANTEED.



Room dimensions

Floor 1

Total:1715sqft Excluded: 0sqft

#		Dimensions	sqft	Counted as living area
1	Bath	15'0" x 4'10"	73 sq. ft	Yes
2	Foyer	10'3" x 7'4"	75 sq. ft	Yes
3	Breakfast Nook	12'1" x 11'1"	119 sq. ft	Yes
4	Living Room	17'10" x 22'7"	426 sq. ft	Yes
5	Bath	8'11" x 4'10"	43 sq. ft	Yes
6	Primary Bedroom	12'3" x 17'6"	213 sq. ft	Yes
7	Bath	5'6" x 3'11"	21 sq. ft	Yes
8	Laundry	5'6" x 7'7"	40 sq. ft	Yes
9	Kitchen	14'0" x 11'1"	153 sq. ft	Yes
10	Bedroom	13'11" x 13'6"	165 sq. ft	Yes
11	Hall	7'8" x 3'8"	28 sq. ft	Yes

Home data report

**128 Riverlake Drive, Shelbyville, Bedford County,
Tennessee, United States, 37160**



#		Dimensions	sqft	Counted as living area
12	Hall	13'4" x 3'8"	49 sq. ft	Yes
13	Dining Room	17'1" x 11'5"	169 sq. ft	Yes
14	W.I.C.	5'10" x 4'10"	28 sq. ft	Yes

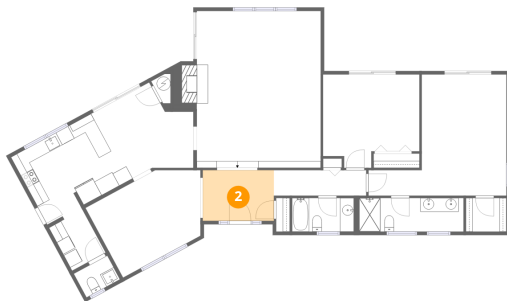
1 Floor 1 - Bath



Dimensions: 15'0" x 4'10"
Area: 73 sq. ft
Counted as living area: Yes

Heated: Yes
Finished: Yes
Enclosed: Yes
Contiguous: Yes
Permitted: Yes
Wet space: Yes
Addition: No
Conversion: No

2 Floor 1 - Foyer



Dimensions: 10'3" x 7'4"
Area: 75 sq. ft
Counted as living area: Yes

Heated: Yes
Finished: Yes
Enclosed: Yes
Contiguous: Yes
Permitted: Yes
Wet space: No
Addition: No
Conversion: No

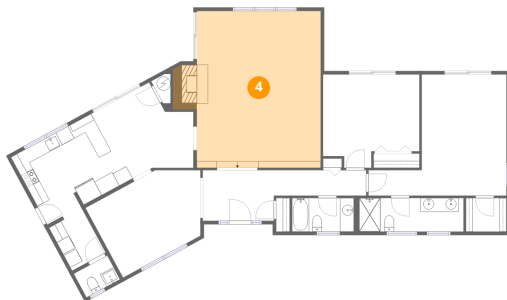
3 Floor 1 - Breakfast Nook



Dimensions: 12'1" x 11'1"
Area: 119 sq. ft
Counted as living area: Yes

Heated: Yes
Finished: Yes
Enclosed: Yes
Contiguous: Yes
Permitted: Yes
Wet space: No
Addition: No
Conversion: No

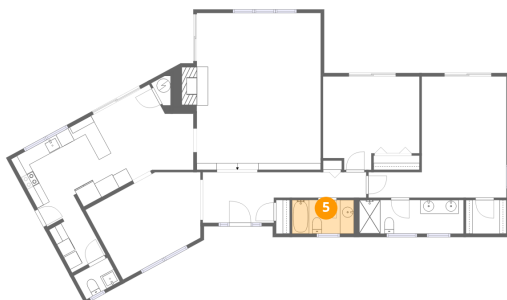
4 Floor 1 - Living Room



Dimensions: 17'10" x 22'7"
Area: 426 sq. ft
Counted as living area: Yes

Heated: Yes
Finished: Yes
Enclosed: Yes
Contiguous: Yes
Permitted: Yes
Wet space: No
Addition: No
Conversion: No

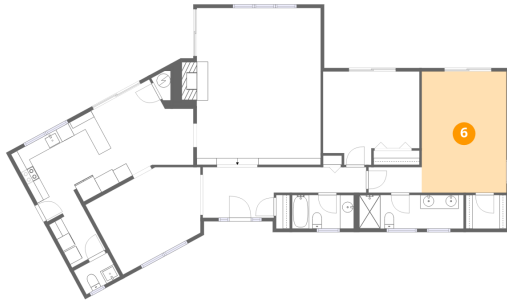
5 Floor 1 - Bath



Dimensions: 8'11" x 4'10"
Area: 43 sq. ft
Counted as living area: Yes

Heated: Yes
Finished: Yes
Enclosed: Yes
Contiguous: Yes
Permitted: Yes
Wet space: Yes
Addition: No
Conversion: No

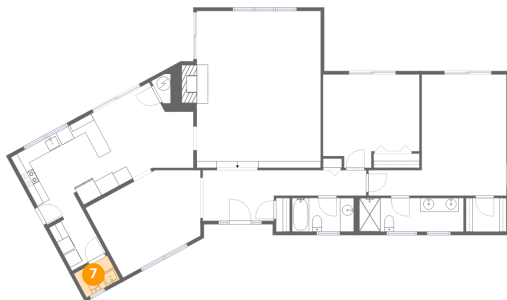
6 Floor 1 - Primary Bedroom



Dimensions: 12'3" x 17'6"
Area: 213 sq. ft
Counted as living area: Yes

Heated: Yes
Finished: Yes
Enclosed: Yes
Contiguous: Yes
Permitted: Yes
Wet space: No
Addition: No
Conversion: No

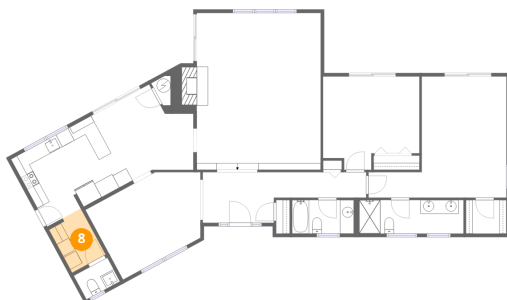
7 Floor 1 - Bath



Dimensions: 5'6" x 3'11"
Area: 21 sq. ft
Counted as living area: Yes

Heated: Yes
Finished: Yes
Enclosed: Yes
Contiguous: Yes
Permitted: Yes
Wet space: Yes
Addition: No
Conversion: No

8 Floor 1 - Laundry



Dimensions: 5'6" x 7'7"
Area: 40 sq. ft
Counted as living area: Yes

Heated: Yes
Finished: Yes
Enclosed: Yes
Contiguous: Yes
Permitted: Yes
Wet space: No
Addition: No
Conversion: No

9 Floor 1 - Kitchen



Dimensions: 14'0" x 11'1"
Area: 153 sq. ft
Counted as living area: Yes

Heated: Yes
Finished: Yes
Enclosed: Yes
Contiguous: Yes
Permitted: Yes
Wet space: No
Addition: No
Conversion: No

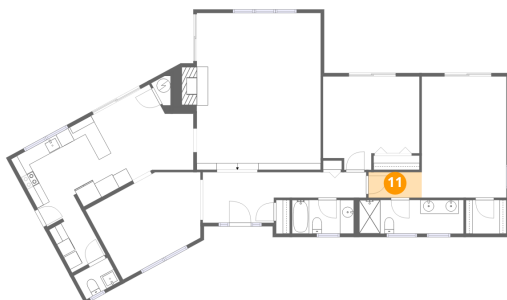
10 Floor 1 - Bedroom



Dimensions: 13'11" x 13'6"
Area: 165 sq. ft
Counted as living area: Yes

Heated: Yes
Finished: Yes
Enclosed: Yes
Contiguous: Yes
Permitted: Yes
Wet space: No
Addition: No
Conversion: No

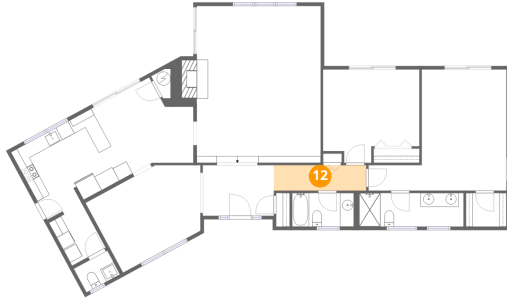
11 Floor 1 - Hall



Dimensions: 7'8" x 3'8"
Area: 28 sq. ft
Counted as living area: Yes

Heated: Yes
Finished: Yes
Enclosed: Yes
Contiguous: Yes
Permitted: Yes
Wet space: No
Addition: No
Conversion: No

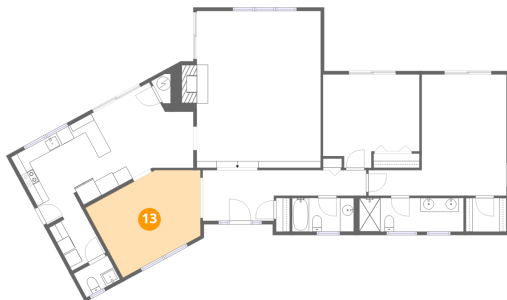
12 Floor 1 - Hall



Dimensions: 13'4" x 3'8"
Area: 49 sq. ft
Counted as living area: Yes

Heated: Yes
Finished: Yes
Enclosed: Yes
Contiguous: Yes
Permitted: Yes
Wet space: No
Addition: No
Conversion: No

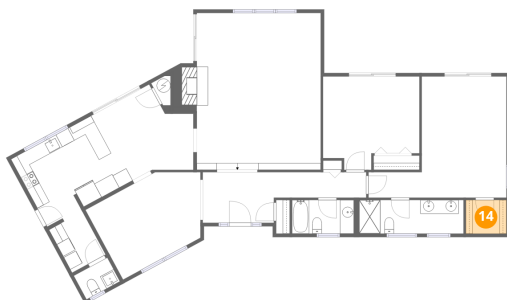
13 Floor 1 - Dining Room



Dimensions: 17'1" x 11'5"
Area: 169 sq. ft
Counted as living area: Yes

Heated: Yes
Finished: Yes
Enclosed: Yes
Contiguous: Yes
Permitted: Yes
Wet space: No
Addition: No
Conversion: No

14 Floor 1 - W.I.C.



Dimensions: 5'10" x 4'10"
Area: 28 sq. ft
Counted as living area: Yes

Heated: Yes
Finished: Yes
Enclosed: Yes
Contiguous: Yes
Permitted: Yes
Wet space: No
Addition: No
Conversion: No