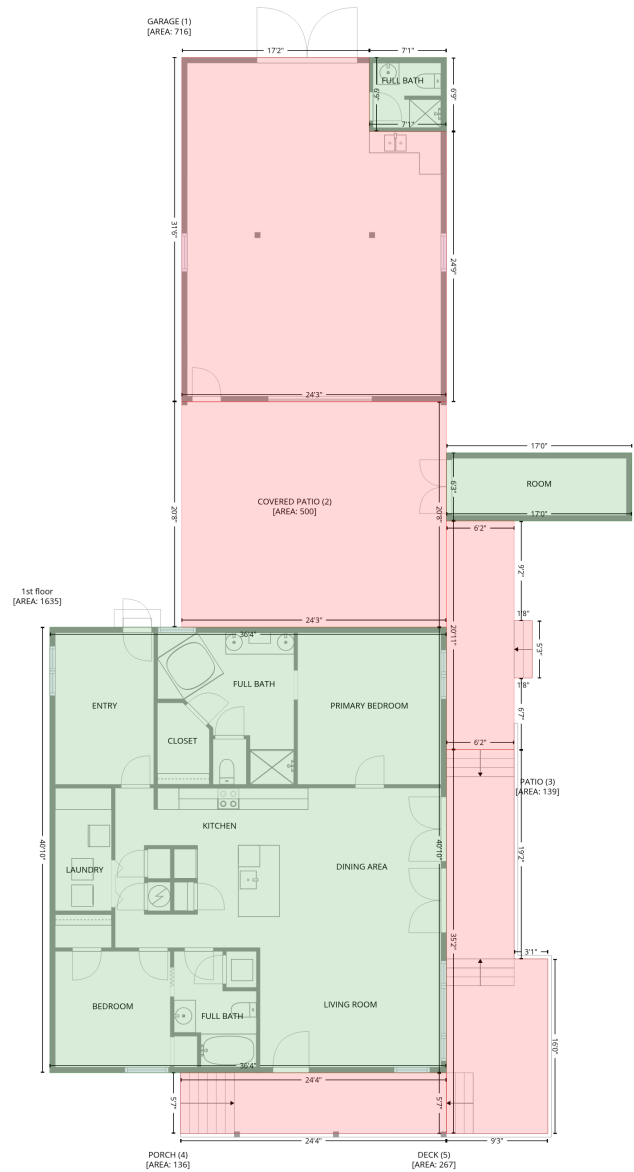


# 11161 Roberts Road, Chunchula, Mobile County, Alabama, United States, 36521

Gross Living Area: 1635 sq. ft

## Level 1



Space	Area (sq. ft)	Calculation
1st floor (Living area)	1635	Coordinate Polygon Area Algorithm using inches $-((498 + 498) * (629.8 - 1119.7) + (498 + 62.5) * (1119.7 - 1119.7) + (62.5 + 62.5) * (1119.7 - 629.8) + (62.5 + 498) * (629.8 - 629.8)) * 0.5 + 0.00694 - ((701.7 + 701.7) * (438.1 - 513) + (701.7 + 498) * (513 - 513) + (498 + 498) * (513 - 438.1) + (498 + 701.7) * (438.1 - 438.1)) * 0.5 + 0.00694 - ((498 + 498) * (3.4 - 84.6) + (498 + 413.3) * (84.6 - 84.6) + (413.3 + 413.3) * (84.6 - 3.4) + (413.3 + 498) * (3.4 - 3.4)) * 0.5 + 0.00694$

# 11161 Roberts Road, Chunchula, Mobile County, Alabama, United States, 36521

Gross Living Area: 1635 sq. ft

## Level 1

Space	Area (sq. ft)	Calculation <small>Coordinate Polygon Area Algorithm using inches</small>
GARAGE (Non-living area)	716	$-\left((413.3 + 413.3) * (3.4 - 84.6) + (413.3 + 498) * (84.6 - 84.6) + (498 + 498) * (84.6 - 381.9) + (498 + 207.4) * (381.9 - 381.9) + (207.4 + 207.4) * (381.9 - 3.4) + (207.4 + 413.3) * (3.4 - 3.4)\right) * 0.5 * 0.00694$
COVERED PATIO (Non-living area)	500	$-\left((498 + 498) * (381.9 - 629.8) + (498 + 207.4) * (629.8 - 629.8) + (207.4 + 207.4) * (629.8 - 381.9) + (207.4 + 498) * (381.9 - 381.9)\right) * 0.5 * 0.00694$
PATIO (Non-living area)	139	$-\left((572.4 + 572.4) * (513 - 622.6) + (572.4 + 592.2) * (622.6 - 622.6) + (592.2 + 592.2) * (622.6 - 685.7) + (592.2 + 572.4) * (685.7 - 685.7) + (572.4 + 572.4) * (685.7 - 764.5) + (572.4 + 498) * (764.5 - 764.5) + (498 + 498) * (764.5 - 513) + (498 + 572.4) * (513 - 513)\right) * 0.5 * 0.00694$
PORCH (Non-living area)	136	$-\left((498 + 498) * (1119.7 - 1186.6) + (498 + 206.1) * (1186.6 - 1186.6) + (206.1 + 206.1) * (1186.6 - 1119.7) + (206.1 + 498) * (1119.7 - 1119.7)\right) * 0.5 * 0.00694$
DECK (Non-living area)	267	$-\left((572.4 + 572.4) * (764.5 - 994.5) + (572.4 + 609.4) * (994.5 - 994.5) + (609.4 + 609.4) * (994.5 - 1186.6) + (609.4 + 498) * (1186.6 - 1186.6) + (498 + 498) * (1186.6 - 764.5) + (498 + 572.4) * (764.5 - 764.5)\right) * 0.5 * 0.00694$