

Home data report

970 Hill Crest Drive, Carol Stream, DuPage County, Illinois,  
United States, 60188




Total Area: 1597 sq. ft

1st Floor: 957 sq. ft, 2nd Floor: 640 sq. ft

Excluded: Garage 413 sq. ft, Fireplace 6 sq. ft, Walls: 148 sq. ft

Property summary

 2 Floors

 3 Bedrooms

 2 Bathrooms

Home data report

**970 Hill Crest Drive, Carol Stream, DuPage County, Illinois,  
United States, 60188**



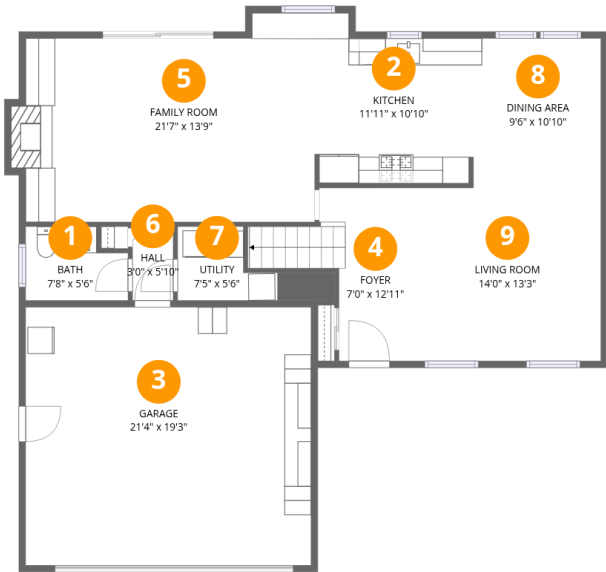
**1**  
Half baths



**1**  
Garages

Home data report

970 Hill Crest Drive, Carol Stream, DuPage County, Illinois,  
United States, 60188



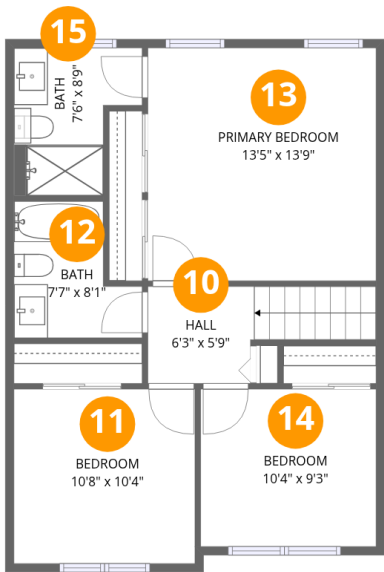
Room dimensions

Floor 1 Total:957sqft    Excluded: 419sqft

#		Dimensions	sqft	Counted as living area
1	Bath	7'8" x 5'6"	38 sq. ft	Yes
2	Kitchen	11'11" x 10'10"	133 sq. ft	Yes
3	Garage	21'4" x 19'3"	413 sq. ft	No
4	Foyer	7'0" x 12'11"	97 sq. ft	Yes
5	Family Room	21'7" x 13'9"	312 sq. ft	Yes
6	Hall	3'0" x 5'10"	18 sq. ft	Yes
7	Utility	7'5" x 5'6"	41 sq. ft	Yes
8	Dining Area	9'6" x 10'10"	104 sq. ft	Yes
9	Living Room	14'0" x 13'3"	185 sq. ft	Yes

Home data report

970 Hill Crest Drive, Carol Stream, DuPage County, Illinois,  
United States, 60188

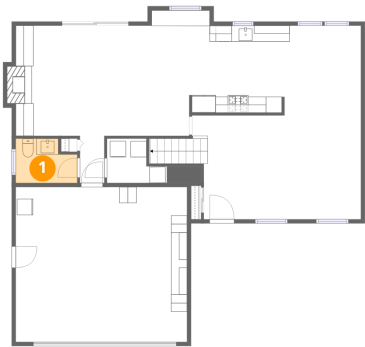


Room dimensions

Floor 2 Total:640sqft Excluded: 0sqft

#		Dimensions	sqft	Counted as living area
10	Hall	6'3" x 5'9"	58 sq. ft	Yes
11	Bedroom	10'8" x 10'4"	110 sq. ft	Yes
12	Bath	7'7" x 8'1"	50 sq. ft	Yes
13	Primary Bedroom	13'5" x 13'9"	185 sq. ft	Yes
14	Bedroom	10'4" x 9'3"	96 sq. ft	Yes
15	Bath	7'6" x 8'9"	54 sq. ft	Yes

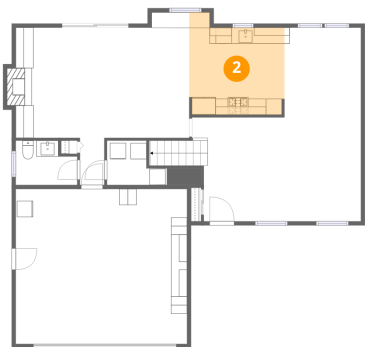
1 Floor 1 - Bath



Dimensions: 7'8" x 5'6"  
Area: 38 sq. ft  
Counted as living area: Yes

Heated: Yes  
Finished: Yes  
Enclosed: Yes  
Contiguous: Yes  
Permitted: Yes  
Wet space: Yes  
Addition: No  
Conversion: No

2 Floor 1 - Kitchen

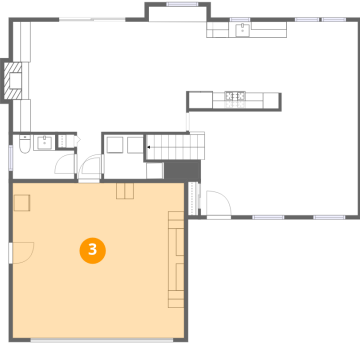


Dimensions: 11'11" x 10'10"  
Area: 133 sq. ft  
Counted as living area: Yes

Heated: Yes  
Finished: Yes  
Enclosed: Yes  
Contiguous: Yes  
Permitted: Yes  
Wet space: No  
Addition: No  
Conversion: No

970 Hill Crest Drive, Carol Stream, DuPage County, Illinois,  
United States, 60188

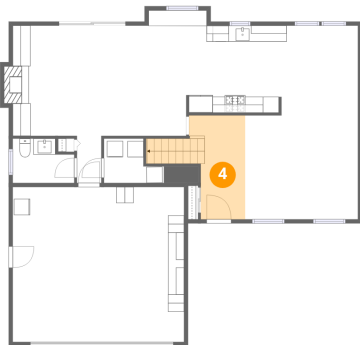
### 3 Floor 1 - Garage



Dimensions: 21'4" x 19'3"  
Area: 413 sq. ft  
Counted as living area: No

Heated: No  
Finished: No  
Enclosed: Yes  
Contiguous: Yes  
Permitted: Yes  
Wet space: No  
Addition: No  
Conversion: No

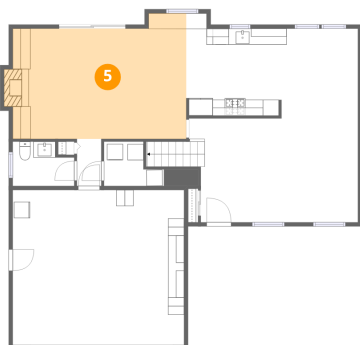
### 4 Floor 1 - Foyer



Dimensions: 7'0" x 12'11"  
Area: 97 sq. ft  
Counted as living area: Yes

Heated: Yes  
Finished: Yes  
Enclosed: Yes  
Contiguous: Yes  
Permitted: Yes  
Wet space: No  
Addition: No  
Conversion: No

### 5 Floor 1 - Family Room

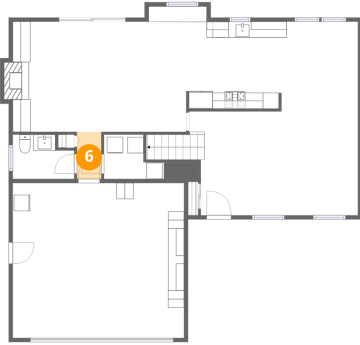


Dimensions: 21'7" x 13'9"  
Area: 312 sq. ft  
Counted as living area: Yes

Heated: Yes  
Finished: Yes  
Enclosed: Yes  
Contiguous: Yes  
Permitted: Yes  
Wet space: No  
Addition: No  
Conversion: No

970 Hill Crest Drive, Carol Stream, DuPage County, Illinois,  
United States, 60188

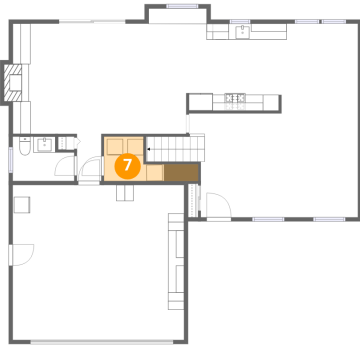
## 6 Floor 1 - Hall



Dimensions: 3'0" x 5'10"  
Area: 18 sq. ft  
Counted as living area: Yes

Heated: Yes  
Finished: Yes  
Enclosed: Yes  
Contiguous: Yes  
Permitted: Yes  
Wet space: No  
Addition: No  
Conversion: No

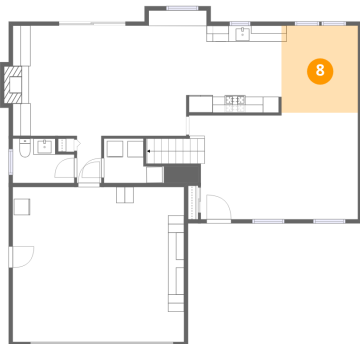
## 7 Floor 1 - Utility



Dimensions: 7'5" x 5'6"  
Area: 41 sq. ft  
Counted as living area: Yes

Heated: Yes  
Finished: Yes  
Enclosed: Yes  
Contiguous: Yes  
Permitted: Yes  
Wet space: No  
Addition: No  
Conversion: No

## 8 Floor 1 - Dining Area



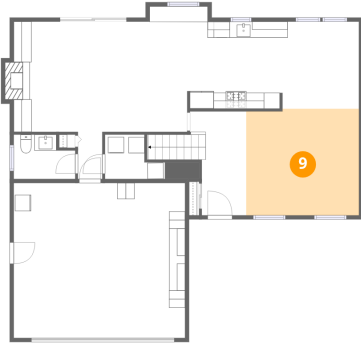
Dimensions: 9'6" x 10'10"  
Area: 104 sq. ft  
Counted as living area: Yes

Heated: Yes  
Finished: Yes  
Enclosed: Yes  
Contiguous: Yes  
Permitted: Yes  
Wet space: No  
Addition: No  
Conversion: No

## Home data report

970 Hill Crest Drive, Carol Stream, DuPage County, Illinois,  
United States, 60188

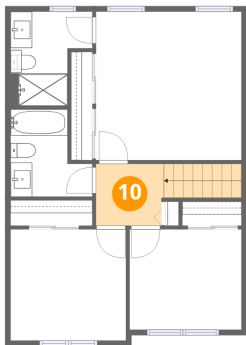
### 9 Floor 1 - Living Room



Dimensions: 14'0" x 13'3"  
Area: 185 sq. ft  
Counted as living area: Yes

Heated: Yes  
Finished: Yes  
Enclosed: Yes  
Contiguous: Yes  
Permitted: Yes  
Wet space: No  
Addition: No  
Conversion: No

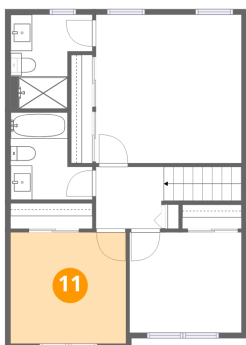
### 10 Floor 2 - Hall



Dimensions: 6'3" x 5'9"  
Area: 58 sq. ft  
Counted as living area: Yes

Heated: Yes  
Finished: Yes  
Enclosed: Yes  
Contiguous: Yes  
Permitted: Yes  
Wet space: No  
Addition: No  
Conversion: No

### 11 Floor 2 - Bedroom



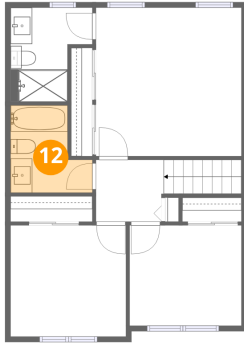
Dimensions: 10'8" x 10'4"  
Area: 110 sq. ft  
Counted as living area: Yes

Heated: Yes  
Finished: Yes  
Enclosed: Yes  
Contiguous: Yes  
Permitted: Yes  
Wet space: No  
Addition: No  
Conversion: No



970 Hill Crest Drive, Carol Stream, DuPage County, Illinois,  
United States, 60188

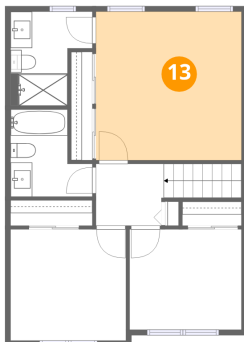
## 12 Floor 2 - Bath



Dimensions: 7'7" x 8'1"  
Area: 50 sq. ft  
Counted as living area: Yes

Heated: Yes  
Finished: Yes  
Enclosed: Yes  
Contiguous: Yes  
Permitted: Yes  
Wet space: Yes  
Addition: No  
Conversion: No

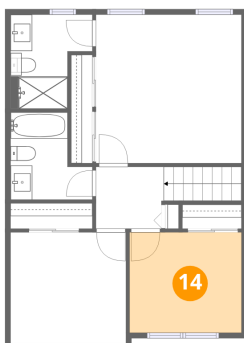
## 13 Floor 2 - Primary Bedroom



Dimensions: 13'5" x 13'9"  
Area: 185 sq. ft  
Counted as living area: Yes

Heated: Yes  
Finished: Yes  
Enclosed: Yes  
Contiguous: Yes  
Permitted: Yes  
Wet space: No  
Addition: No  
Conversion: No

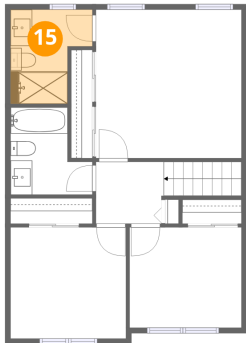
## 14 Floor 2 - Bedroom



Dimensions: 10'4" x 9'3"  
Area: 96 sq. ft  
Counted as living area: Yes

Heated: Yes  
Finished: Yes  
Enclosed: Yes  
Contiguous: Yes  
Permitted: Yes  
Wet space: No  
Addition: No  
Conversion: No

15 Floor 2 - Bath



Dimensions: 7'6" x 8'9"  
Area: 54 sq. ft  
Counted as living area: Yes

Heated: Yes  
Finished: Yes  
Enclosed: Yes  
Contiguous: Yes  
Permitted: Yes  
Wet space: Yes  
Addition: No  
Conversion: No