

BASEMENT  
37'8" x 40'7"

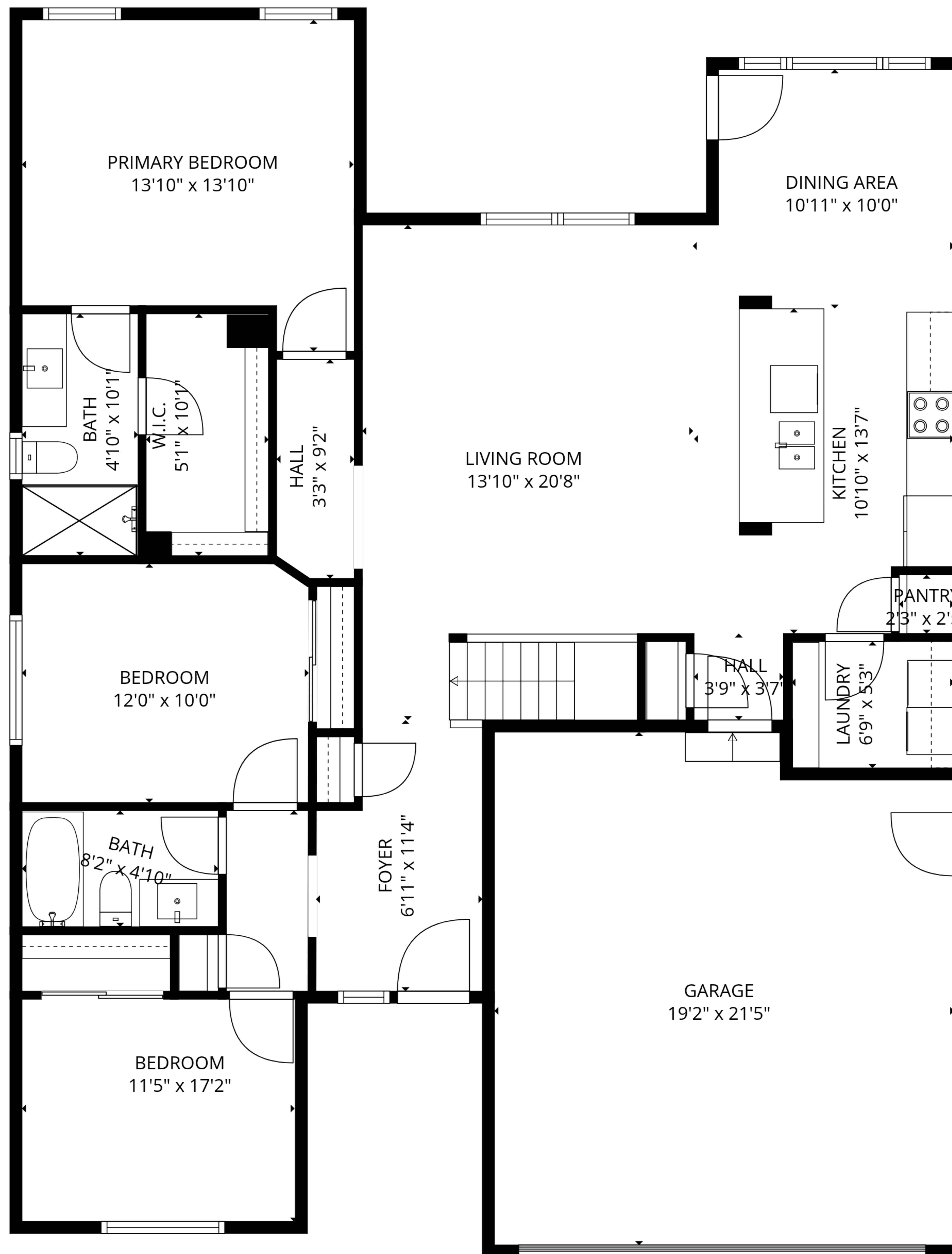
BEDROOM  
10'2" x 18'11"

**TOTAL: 1563 sq. ft**

Basement: 236 sq. ft, 1st floor: 1327 sq. ft

EXCLUDED AREAS: BASEMENT: 1029 sq. ft, GARAGE: 396 sq. ft, WALLS: 221 sq. ft

SIZES AND DIMENSIONS ARE APPROXIMATE, ACTUAL MAY VARY.

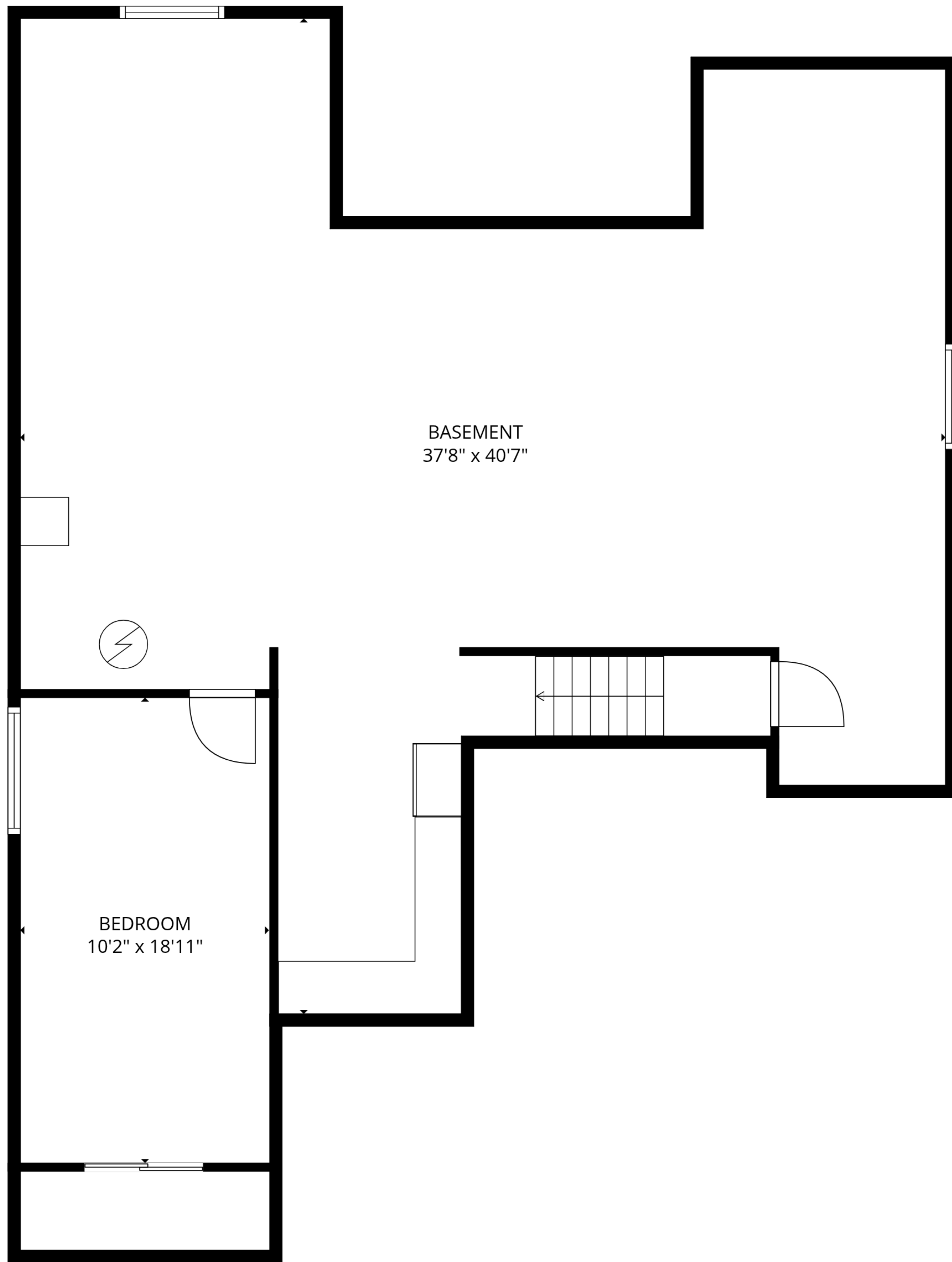


**TOTAL: 1563 sq. ft**

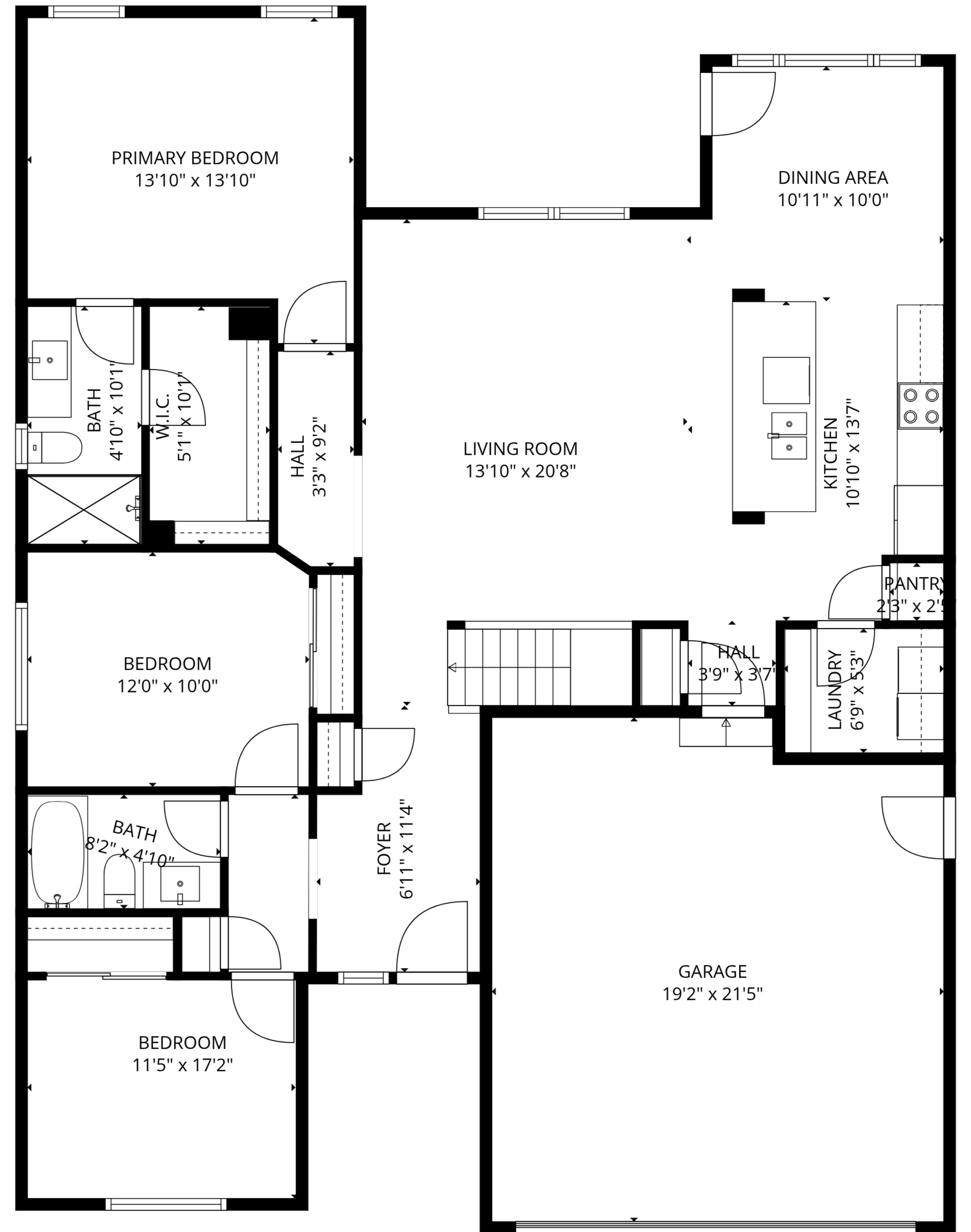
Basement: 236 sq. ft, 1st floor: 1327 sq. ft

EXCLUDED AREAS: BASEMENT: 1029 sq. ft, GARAGE: 396 sq. ft, WALLS: 221 sq. ft

SIZES AND DIMENSIONS ARE APPROXIMATE, ACTUAL MAY VARY.



Basement



1st floor

**TOTAL: 1563 sq. ft**  
 Basement: 236 sq. ft, 1st floor: 1327 sq. ft  
 EXCLUDED AREAS: BASEMENT: 1029 sq. ft, GARAGE: 396 sq. ft, WALLS: 221 sq. ft

SIZES AND DIMENSIONS ARE APPROXIMATE, ACTUAL MAY VARY.