

Home data report

1598 Annapolis Drive, Glenview, Cook County, Illinois, United States, 60026



Total Area: 5199 sq. ft

Basement: 1655 sq. ft, 1st Floor: 1994 sq. ft, 2nd Floor: 1550 sq. ft

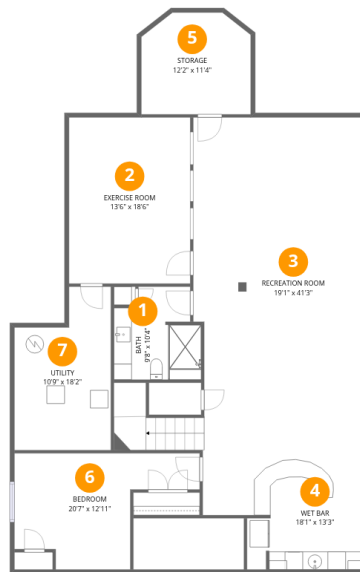
Excluded: Utility 167 sq. ft, Storage 129 sq. ft, Garage 664 sq. ft, Patio 955 sq. ft, Open to below 471 sq. ft, Balcony 60 sq. ft, Walls: 359 sq. ft

Property summary



Home data report

1598 Annapolis Drive, Glenview, Cook County, Illinois, United States, 60026



Room dimensions

Floor 1 Below grade

Total:1655sqft

Excluded: 296sqft

#		Dimensions	sqft	Counted as living area
1	Bath	9'8" x 10'4"	88 sq. ft	Yes
2	Exercise Room	13'6" x 18'6"	252 sq. ft	Yes
3	Recreation Room	19'1" x 41'3"	741 sq. ft	Yes
4	Wet Bar	18'1" x 13'3"	209 sq. ft	Yes
5	Storage	12'2" x 11'4"	129 sq. ft	No
6	Bedroom	20'7" x 12'11"	187 sq. ft	Yes
7	Utility	10'9" x 18'2"	167 sq. ft	No

Home data report

1598 Annapolis Drive, Glenview, Cook County, Illinois, United States, 60026



Room dimensions

Floor 2

Total:1994sqft

Excluded: 1619sqft

#		Dimensions	sqft	Counted as living area
8	Foyer	10'9" x 26'8"	229 sq. ft	Yes
9	Breakfast Area	12'2" x 12'1"	137 sq. ft	Yes
10	Patio	40'0" x 28'4"	955 sq. ft	No
11	Hall	5'4" x 5'9"	30 sq. ft	Yes
12	Garage	29'8" x 23'8"	664 sq. ft	No
13	Bedroom	11'4" x 13'0"	147 sq. ft	Yes
14	Bath	7'10" x 5'8"	44 sq. ft	Yes
15	Laundry	11'9" x 7'8"	90 sq. ft	Yes
16	Kitchen	13'7" x 26'10"	438 sq. ft	Yes
17	Family Room	19'4" x 20'3"	355 sq. ft	Yes
18	Office	13'11" x 12'11"	179 sq. ft	Yes

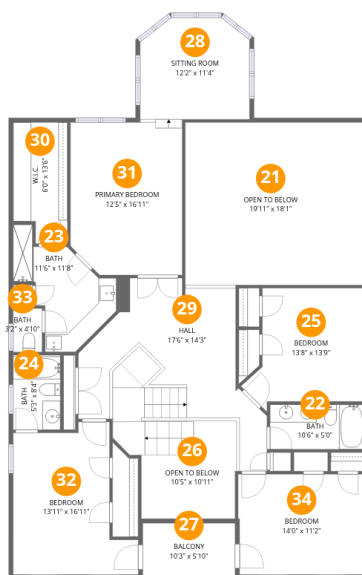
Home data report

1598 Annapolis Drive, Glenview, Cook County, Illinois, United States, 60026

#		Dimensions	sqft	Counted as living area
19	Dining Area	13'11" x 16'11"	225 sq. ft	Yes
20	Pantry	5'3" x 5'9"	30 sq. ft	Yes

Home data report

1598 Annapolis Drive, Glenview, Cook County, Illinois, United States, 60026



Room dimensions

Floor 3

Total:1550sqft Excluded: 531sqft

#		Dimensions	sqft	Counted as living area
21	Open To Below	19'11" x 18'1"	360 sq. ft	No
22	Bath	10'6" x 5'0"	52 sq. ft	Yes
23	Bath	11'6" x 11'8"	91 sq. ft	Yes
24	Bath	5'3" x 8'4"	43 sq. ft	Yes
25	Bedroom	13'8" x 13'9"	149 sq. ft	Yes
26	Open To Below	10'5" x 10'11"	113 sq. ft	No
27	Balcony	10'3" x 5'10"	60 sq. ft	No
28	Sitting Room	12'2" x 11'4"	129 sq. ft	Yes
29	Hall	17'6" x 14'3"	281 sq. ft	Yes
30	W.I.C.	6'0" x 13'6"	75 sq. ft	Yes
31	Primary Bedroom	12'5" x 16'11"	207 sq. ft	Yes

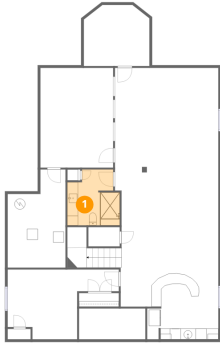
Home data report

1598 Annapolis Drive, Glenview, Cook County, Illinois, United States, 60026

#		Dimensions	sqft	Counted as living area
32	Bedroom	13'11" x 16'11"	185 sq. ft	Yes
33	Bath	3'2" x 4'10"	16 sq. ft	Yes
34	Bedroom	14'0" x 11'2"	155 sq. ft	Yes

1598 Annapolis Drive, Glenview, Cook County, Illinois, United States, 60026

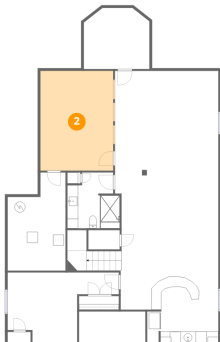
1 Floor 1 - Bath



Dimensions: 9'8" x 10'4"
Area: 88 sq. ft
Counted as living area: Yes

Heated: Yes
Finished: Yes
Enclosed: Yes
Contiguous: Yes
Permitted: Yes
Wet space: Yes
Addition: No
Conversion: No

2 Floor 1 - Exercise Room

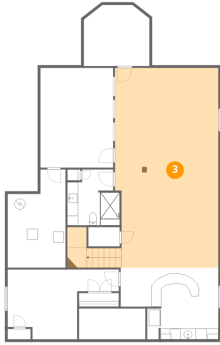


Dimensions: 13'6" x 18'6"
Area: 252 sq. ft
Counted as living area: Yes

Heated: Yes
Finished: Yes
Enclosed: Yes
Contiguous: Yes
Permitted: Yes
Wet space: No
Addition: No
Conversion: No

1598 Annapolis Drive, Glenview, Cook County, Illinois, United States, 60026

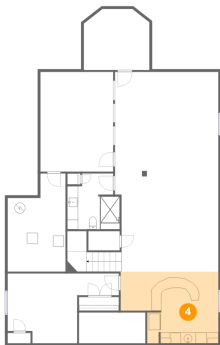
3 Floor 1 - Recreation Room



Dimensions: 19'1" x 41'3"
Area: 741 sq. ft
Counted as living area: Yes

Heated: Yes
Finished: Yes
Enclosed: Yes
Contiguous: Yes
Permitted: Yes
Wet space: No
Addition: No
Conversion: No

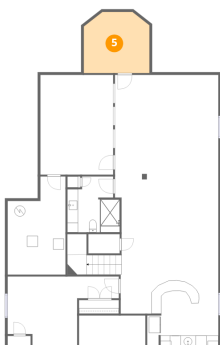
4 Floor 1 - Wet Bar



Dimensions: 18'1" x 13'3"
Area: 209 sq. ft
Counted as living area: Yes

Heated: Yes
Finished: Yes
Enclosed: Yes
Contiguous: Yes
Permitted: Yes
Wet space: No
Addition: No
Conversion: No

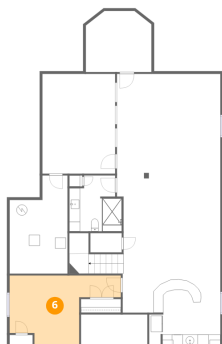
5 Floor 1 - Storage



Dimensions: 12'2" x 11'4"
Area: 129 sq. ft
Counted as living area: No

Heated: No
Finished: No
Enclosed: No
Contiguous: Yes
Permitted: Yes
Wet space: No
Addition: No
Conversion: No

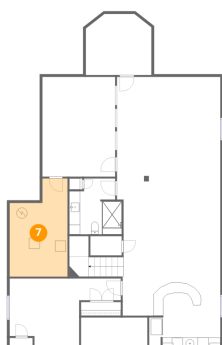
6 Floor 1 - Bedroom



Dimensions: 20'7" x 12'11"
Area: 187 sq. ft
Counted as living area: Yes

Heated: Yes
Finished: Yes
Enclosed: Yes
Contiguous: Yes
Permitted: Yes
Wet space: No
Addition: No
Conversion: No

7 Floor 1 - Utility



Dimensions: 10'9" x 18'2"
Area: 167 sq. ft
Counted as living area: No

Heated: Yes
Finished: No
Enclosed: Yes
Contiguous: Yes
Permitted: Yes
Wet space: No
Addition: No
Conversion: No

8 Floor 2 - Foyer



Dimensions: 10'9" x 26'8"
Area: 229 sq. ft
Counted as living area: Yes

Heated: Yes
Finished: Yes
Enclosed: Yes
Contiguous: Yes
Permitted: Yes
Wet space: No
Addition: No
Conversion: No

9 Floor 2 - Breakfast Area



Dimensions: 12'2" x 12'1"
Area: 137 sq. ft
Counted as living area: Yes

Heated: Yes
Finished: Yes
Enclosed: Yes
Contiguous: Yes
Permitted: Yes
Wet space: No
Addition: No
Conversion: No

10 Floor 2 - Patio



Dimensions: 40'0" x 28'4"
Area: 955 sq. ft
Counted as living area: No

Heated: No
Finished: No
Enclosed: No
Contiguous: Yes
Permitted: Yes
Wet space: No
Addition: No
Conversion: No

11 Floor 2 - Hall



Dimensions: 5'4" x 5'9"
Area: 30 sq. ft
Counted as living area: Yes

Heated: Yes
Finished: Yes
Enclosed: Yes
Contiguous: Yes
Permitted: Yes
Wet space: No
Addition: No
Conversion: No

12 Floor 2 - Garage



Dimensions: 29'8" x 23'8"
Area: 664 sq. ft
Counted as living area: No

Heated: No
Finished: No
Enclosed: Yes
Contiguous: Yes
Permitted: Yes
Wet space: No
Addition: No
Conversion: No

13 Floor 2 - Bedroom



Dimensions: 11'4" x 13'0"
Area: 147 sq. ft
Counted as living area: Yes

Heated: Yes
Finished: Yes
Enclosed: Yes
Contiguous: Yes
Permitted: Yes
Wet space: No
Addition: No
Conversion: No

14 Floor 2 - Bath



Dimensions: 7'10" x 5'8"
Area: 44 sq. ft
Counted as living area: Yes

Heated: Yes
Finished: Yes
Enclosed: Yes
Contiguous: Yes
Permitted: Yes
Wet space: Yes
Addition: No
Conversion: No

1598 Annapolis Drive, Glenview, Cook County, Illinois, United States, 60026

15 Floor 2 - Laundry



Dimensions: 11'9" x 7'8"
Area: 90 sq. ft
Counted as living area: Yes

Heated: Yes
Finished: Yes
Enclosed: Yes
Contiguous: Yes
Permitted: Yes
Wet space: No
Addition: No
Conversion: No

16 Floor 2 - Kitchen



Dimensions: 13'7" x 26'10"
Area: 438 sq. ft
Counted as living area: Yes

Heated: Yes
Finished: Yes
Enclosed: Yes
Contiguous: Yes
Permitted: Yes
Wet space: No
Addition: No
Conversion: No

17 Floor 2 - Family Room



Dimensions: 19'4" x 20'3"
Area: 355 sq. ft
Counted as living area: Yes

Heated: Yes
Finished: Yes
Enclosed: Yes
Contiguous: Yes
Permitted: Yes
Wet space: No
Addition: No
Conversion: No

18 Floor 2 - Office



Dimensions: 13'11" x 12'11"
Area: 179 sq. ft
Counted as living area: Yes

Heated: Yes
Finished: Yes
Enclosed: Yes
Contiguous: Yes
Permitted: Yes
Wet space: No
Addition: No
Conversion: No

19 Floor 2 - Dining Area



Dimensions: 13'11" x 16'11"
Area: 225 sq. ft
Counted as living area: Yes

Heated: Yes
Finished: Yes
Enclosed: Yes
Contiguous: Yes
Permitted: Yes
Wet space: No
Addition: No
Conversion: No

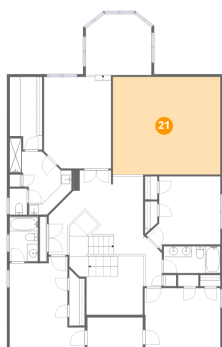
20 Floor 2 - Pantry



Dimensions: 5'3" x 5'9"
Area: 30 sq. ft
Counted as living area: Yes

Heated: Yes
Finished: Yes
Enclosed: Yes
Contiguous: Yes
Permitted: Yes
Wet space: No
Addition: No
Conversion: No

21 Floor 3 - Open To Below



Dimensions: 19'11" x 18'1"
Area: 360 sq. ft
Counted as living area: No

Heated: No
Finished: No
Enclosed: No
Contiguous: Yes
Permitted: No
Wet space: No
Addition: No
Conversion: No

22 Floor 3 - Bath



Dimensions: 10'6" x 5'0"
Area: 52 sq. ft
Counted as living area: Yes

Heated: Yes
Finished: Yes
Enclosed: Yes
Contiguous: Yes
Permitted: Yes
Wet space: Yes
Addition: No
Conversion: No

23 Floor 3 - Bath



Dimensions: 11'6" x 11'8"
Area: 91 sq. ft
Counted as living area: Yes

Heated: Yes
Finished: Yes
Enclosed: Yes
Contiguous: Yes
Permitted: Yes
Wet space: Yes
Addition: No
Conversion: No

24 Floor 3 - Bath



Dimensions: 5'3" x 8'4"
Area: 43 sq. ft
Counted as living area: Yes

Heated: Yes
Finished: Yes
Enclosed: Yes
Contiguous: Yes
Permitted: Yes
Wet space: Yes
Addition: No
Conversion: No

25 Floor 3 - Bedroom



Dimensions: 13'8" x 13'9"
Area: 149 sq. ft
Counted as living area: Yes

Heated: Yes
Finished: Yes
Enclosed: Yes
Contiguous: Yes
Permitted: Yes
Wet space: No
Addition: No
Conversion: No

26 Floor 3 - Open To Below



Dimensions: 10'5" x 10'11"
Area: 113 sq. ft
Counted as living area: No

Heated: No
Finished: No
Enclosed: No
Contiguous: Yes
Permitted: No
Wet space: No
Addition: No
Conversion: No

27 Floor 3 - Balcony



Dimensions: 10'3" x 5'10"
Area: 60 sq. ft
Counted as living area: No

Heated: No
Finished: No
Enclosed: No
Contiguous: Yes
Permitted: Yes
Wet space: No
Addition: No
Conversion: No

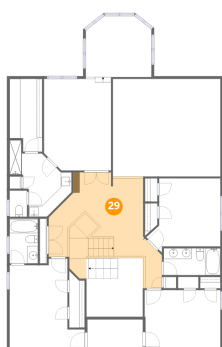
28 Floor 3 - Sitting Room



Dimensions: 12'2" x 11'4"
Area: 129 sq. ft
Counted as living area: Yes

Heated: Yes
Finished: Yes
Enclosed: Yes
Contiguous: Yes
Permitted: Yes
Wet space: No
Addition: No
Conversion: No

29 Floor 3 - Hall



Dimensions: 17'6" x 14'3"
Area: 281 sq. ft
Counted as living area: Yes

Heated: Yes
Finished: Yes
Enclosed: Yes
Contiguous: Yes
Permitted: Yes
Wet space: No
Addition: No
Conversion: No

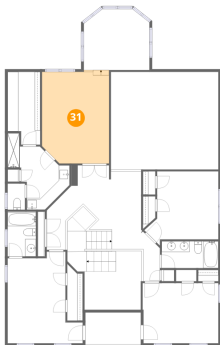
30 Floor 3 - W.I.C.



Dimensions: 6'0" x 13'6"
Area: 75 sq. ft
Counted as living area: Yes

Heated: Yes
Finished: Yes
Enclosed: Yes
Contiguous: Yes
Permitted: Yes
Wet space: No
Addition: No
Conversion: No

31 Floor 3 - Primary Bedroom



Dimensions: 12'5" x 16'11"
Area: 207 sq. ft
Counted as living area: Yes

Heated: Yes
Finished: Yes
Enclosed: Yes
Contiguous: Yes
Permitted: Yes
Wet space: No
Addition: No
Conversion: No

32 Floor 3 - Bedroom



Dimensions: 13'11" x 16'11"
Area: 185 sq. ft
Counted as living area: Yes

Heated: Yes
Finished: Yes
Enclosed: Yes
Contiguous: Yes
Permitted: Yes
Wet space: No
Addition: No
Conversion: No

1598 Annapolis Drive, Glenview, Cook County, Illinois, United States, 60026

33 Floor 3 - Bath



Dimensions: 3'2" x 4'10"
Area: 16 sq. ft
Counted as living area: Yes

Heated: Yes
Finished: Yes
Enclosed: Yes
Contiguous: Yes
Permitted: Yes
Wet space: Yes
Addition: No
Conversion: No

34 Floor 3 - Bedroom



Dimensions: 14'0" x 11'2"
Area: 155 sq. ft
Counted as living area: Yes

Heated: Yes
Finished: Yes
Enclosed: Yes
Contiguous: Yes
Permitted: Yes
Wet space: No
Addition: No
Conversion: No