

301-6500 194 Street

Surrey BC V4N 5X4

Total Area 955 SQ.FT.
Patio Area: 100 SQ.FT.
Ceiling Height: 8'0"

2



BEDROOMS

2

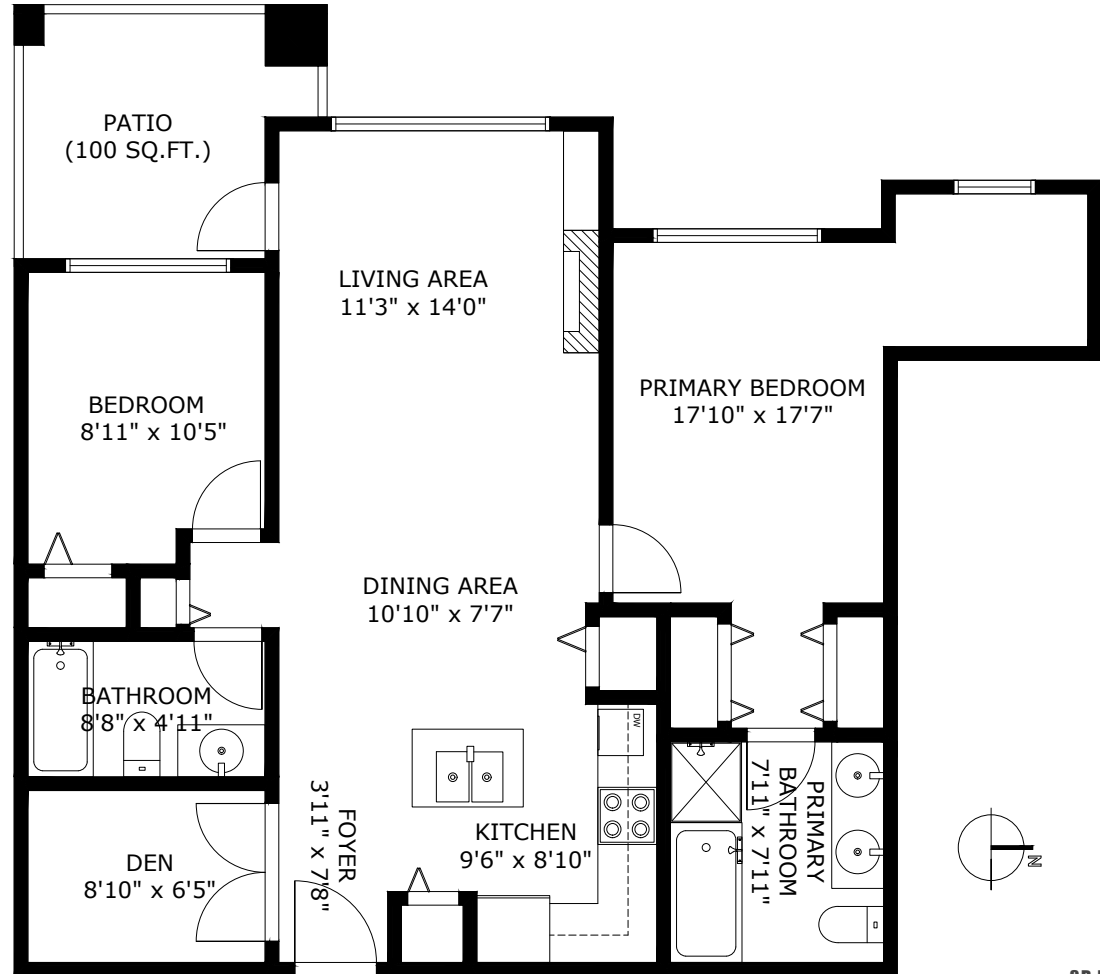


BATHROOMS

955



TOTAL SQ.FT.



301-6500 194 ST SURREY BC V4N 5X4

Measurements are approximate and may not be to scale.
The floor plan illustration is not suitable for construction/architectural purposes.
This communication is not intended to cause or induce breach of an existing agency agreement

