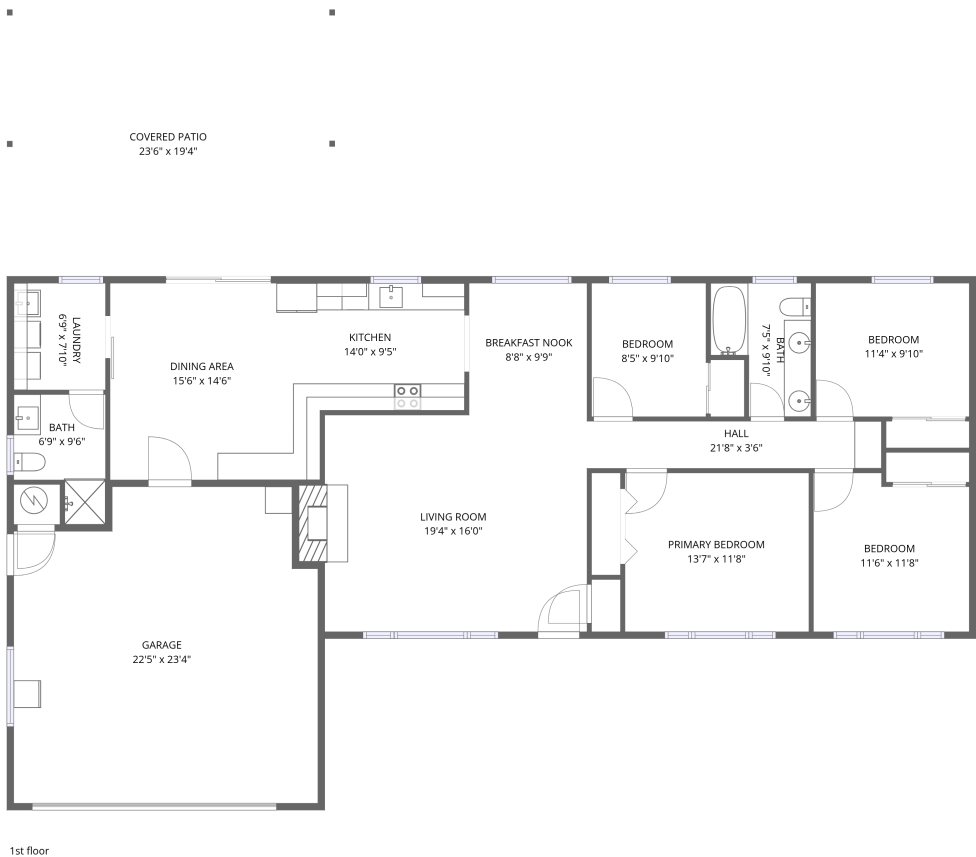


Home data report

39449 Northwest Wilkesboro Road, Roy, Banks, Washington
County, Oregon, United States, 97106




Total Area: 1572 sq. ft


1st Floor: 1572 sq. ft


Excluded: Garage 498 sq. ft, Covered patio 454 sq. ft, Walls: 130 sq. ft

Property summary

 **1** Floors

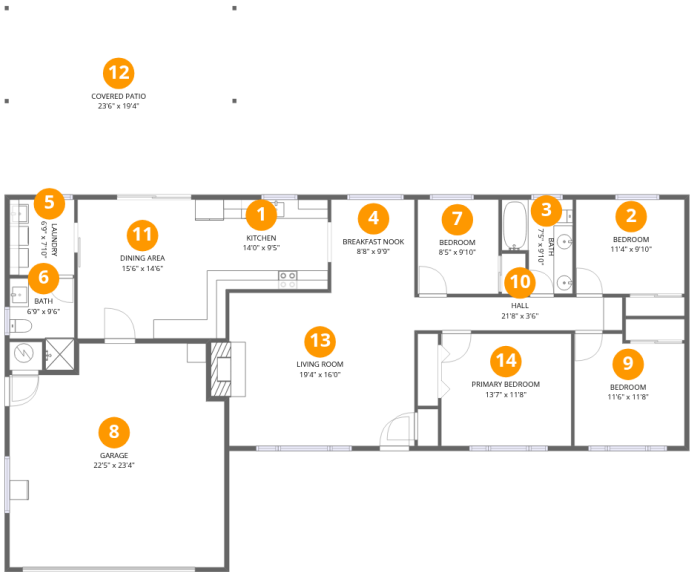
 **4** Bedrooms

 **2** Bathrooms

 **1** Garages

Home data report

39449 Northwest Wilkesboro Road, Roy, Banks, Washington
County, Oregon, United States, 97106



Room dimensions

Floor 1 Total:1572sqft Excluded: 952sqft

#		Dimensions	sqft	Counted as living area
1	Kitchen	14'0" x 9'5"	132 sq. ft	Yes
2	Bedroom	11'4" x 9'10"	111 sq. ft	Yes
3	Bath	7'5" x 9'10"	60 sq. ft	Yes
4	Breakfast Nook	8'8" x 9'9"	84 sq. ft	Yes
5	Laundry	6'9" x 7'10"	53 sq. ft	Yes
6	Bath	6'9" x 9'6"	52 sq. ft	Yes
7	Bedroom	8'5" x 9'10"	83 sq. ft	Yes
8	Garage	22'5" x 23'4"	487 sq. ft	No
9	Bedroom	11'6" x 11'8"	128 sq. ft	Yes
10	Hall	21'8" x 3'6"	75 sq. ft	Yes
11	Dining Area	15'6" x 14'6"	192 sq. ft	Yes

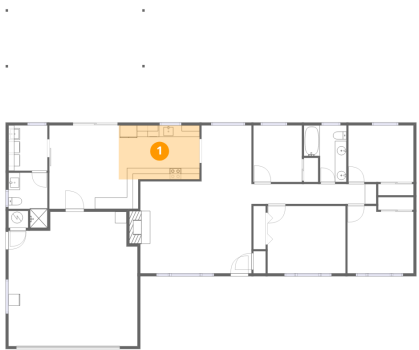
Home data report

39449 Northwest Wilkesboro Road, Roy, Banks, Washington
County, Oregon, United States, 97106

#		Dimensions	sqft	Counted as living area
12	Covered Patio	23'6" x 19'4"	454 sq. ft	No
13	Living Room	19'4" x 16'0"	319 sq. ft	Yes
14	Primary Bedroom	13'7" x 11'8"	159 sq. ft	Yes

39449 Northwest Wilkesboro Road, Roy, Banks, Washington
County, Oregon, United States, 97106

1 Floor 1 - Kitchen



Dimensions: 14'0" x 9'5"
Area: 132 sq. ft
Counted as living area: Yes

Heated: Yes
Finished: Yes
Enclosed: Yes
Contiguous: Yes
Permitted: Yes
Wet space: No
Addition: No
Conversion: No

2 Floor 1 - Bedroom



Dimensions: 11'4" x 9'10"
Area: 111 sq. ft
Counted as living area: Yes

Heated: Yes
Finished: Yes
Enclosed: Yes
Contiguous: Yes
Permitted: Yes
Wet space: No
Addition: No
Conversion: No

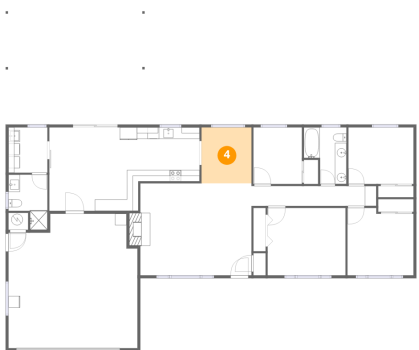
3 Floor 1 - Bath



Dimensions: 7'5" x 9'10"
Area: 60 sq. ft
Counted as living area: Yes

Heated: Yes
Finished: Yes
Enclosed: Yes
Contiguous: Yes
Permitted: Yes
Wet space: Yes
Addition: No
Conversion: No

4 Floor 1 - Breakfast Nook



Dimensions: 8'8" x 9'9"
Area: 84 sq. ft
Counted as living area: Yes

Heated: Yes
Finished: Yes
Enclosed: Yes
Contiguous: Yes
Permitted: Yes
Wet space: No
Addition: No
Conversion: No

5 Floor 1 - Laundry



Dimensions: 6'9" x 7'10"
Area: 53 sq. ft
Counted as living area: Yes

Heated: Yes
Finished: Yes
Enclosed: Yes
Contiguous: Yes
Permitted: Yes
Wet space: No
Addition: No
Conversion: No

39449 Northwest Wilkesboro Road, Roy, Banks, Washington
County, Oregon, United States, 97106

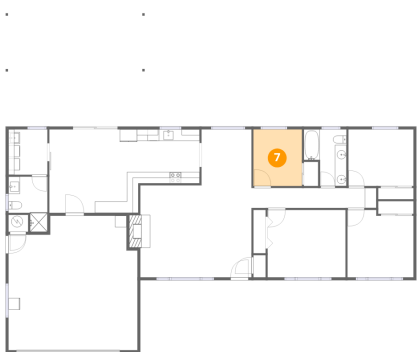
6 Floor 1 - Bath



Dimensions: 6'9" x 9'6"
Area: 52 sq. ft
Counted as living area: Yes

Heated: Yes
Finished: Yes
Enclosed: Yes
Contiguous: Yes
Permitted: Yes
Wet space: Yes
Addition: No
Conversion: No

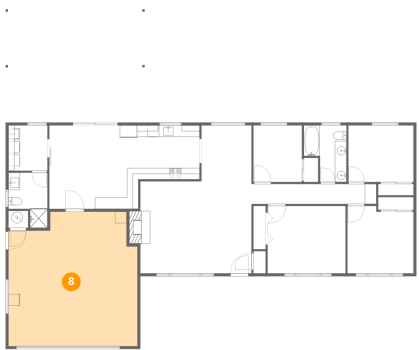
7 Floor 1 - Bedroom



Dimensions: 8'5" x 9'10"
Area: 83 sq. ft
Counted as living area: Yes

Heated: Yes
Finished: Yes
Enclosed: Yes
Contiguous: Yes
Permitted: Yes
Wet space: No
Addition: No
Conversion: No

8 Floor 1 - Garage



Dimensions: 22'5" x 23'4"
Area: 487 sq. ft
Counted as living area: No

Heated: No
Finished: No
Enclosed: Yes
Contiguous: Yes
Permitted: Yes
Wet space: No
Addition: No
Conversion: No

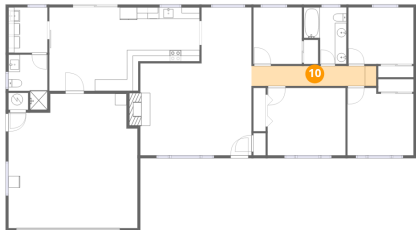
9 Floor 1 - Bedroom



Dimensions: 11'6" x 11'8"
Area: 128 sq. ft
Counted as living area: Yes

Heated: Yes
Finished: Yes
Enclosed: Yes
Contiguous: Yes
Permitted: Yes
Wet space: No
Addition: No
Conversion: No

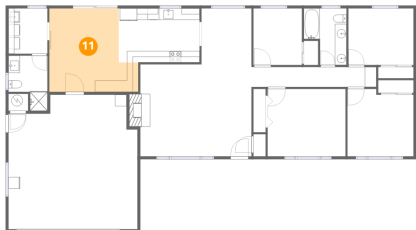
10 Floor 1 - Hall



Dimensions: 21'8" x 3'6"
Area: 75 sq. ft
Counted as living area: Yes

Heated: Yes
Finished: Yes
Enclosed: Yes
Contiguous: Yes
Permitted: Yes
Wet space: No
Addition: No
Conversion: No

11 Floor 1 - Dining Area

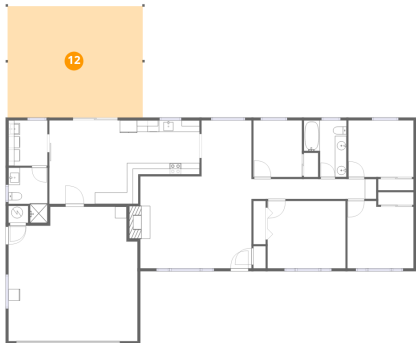


Dimensions: 15'6" x 14'6"
Area: 192 sq. ft
Counted as living area: Yes

Heated: Yes
Finished: Yes
Enclosed: Yes
Contiguous: Yes
Permitted: Yes
Wet space: No
Addition: No
Conversion: No

39449 Northwest Wilkesboro Road, Roy, Banks, Washington
County, Oregon, United States, 97106

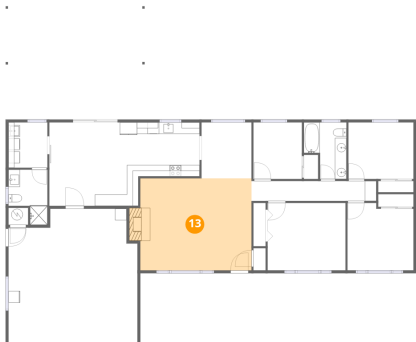
12 Floor 1 - Covered Patio



Dimensions: 23'6" x 19'4"
Area: 454 sq. ft
Counted as living area: No

Heated: No
Finished: No
Enclosed: No
Contiguous: Yes
Permitted: Yes
Wet space: No
Addition: No
Conversion: No

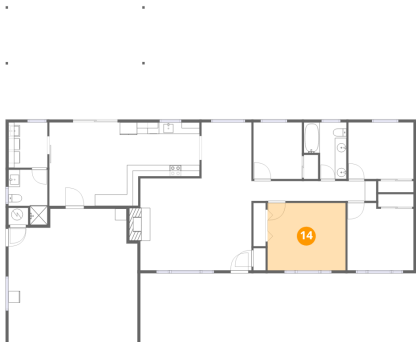
13 Floor 1 - Living Room



Dimensions: 19'4" x 16'0"
Area: 319 sq. ft
Counted as living area: Yes

Heated: Yes
Finished: Yes
Enclosed: Yes
Contiguous: Yes
Permitted: Yes
Wet space: No
Addition: No
Conversion: No

14 Floor 1 - Primary Bedroom



Dimensions: 13'7" x 11'8"
Area: 159 sq. ft
Counted as living area: Yes

Heated: Yes
Finished: Yes
Enclosed: Yes
Contiguous: Yes
Permitted: Yes
Wet space: No
Addition: No
Conversion: No