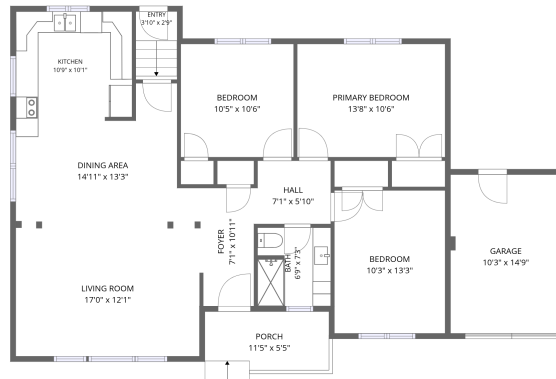
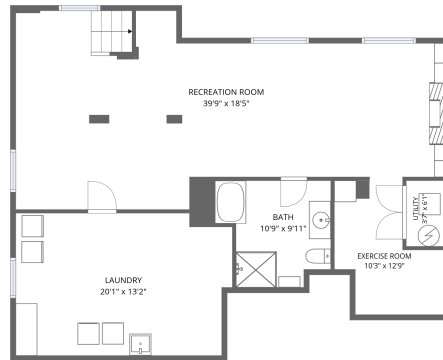


Home data report

744 Glengrove St, Oshawa, ON, CA



1st floor



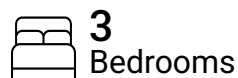
Basement

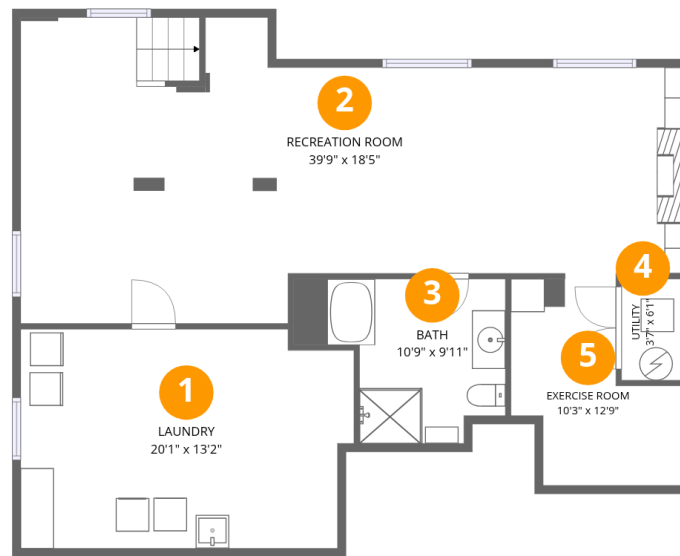
Total Area: 2174 sq. ft

Basement: 1057 sq. ft, 1st Floor: 1117 sq. ft

Excluded: Utility 22 sq. ft, Garage 151 sq. ft, Porch 59 sq. ft, Walls: 170 sq. ft

Property summary





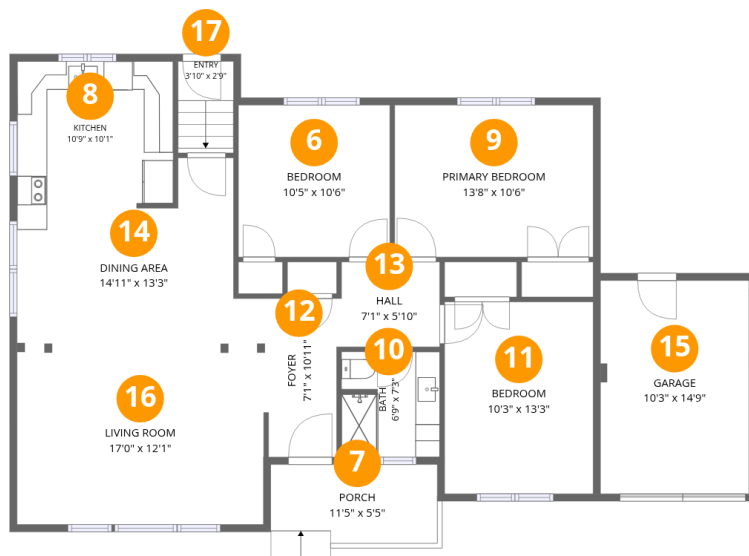
Room dimensions

Floor 1 Below grade

Total: 1057 sqft

Excluded: 22 sqft

#		Dimensions	sqft	Counted as living area
1	Laundry	20'1" x 13'2"	254 sq. ft	Yes
2	Recreation Room	39'9" x 18'5"	585 sq. ft	Yes
3	Bath	10'9" x 9'11"	99 sq. ft	Yes
4	Utility	3'7" x 6'1"	22 sq. ft	No
5	Exercise Room	10'3" x 12'9"	95 sq. ft	Yes



Room dimensions

Floor 2

Total: 1117 sqft

Excluded: 210 sqft

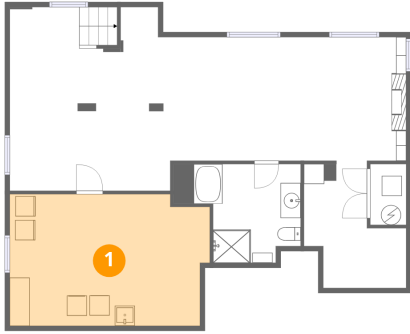
#		Dimensions	sqft	Counted as living area
6	Bedroom	10'5" x 10'6"	110 sq. ft	Yes
7	Porch	11'5" x 5'5"	59 sq. ft	No
8	Kitchen	10'9" x 10'1"	108 sq. ft	Yes
9	Primary Bedroom	13'8" x 10'6"	144 sq. ft	Yes
10	Bath	6'9" x 7'3"	49 sq. ft	Yes
11	Bedroom	10'3" x 13'3"	136 sq. ft	Yes
12	Foyer	7'1" x 10'11"	61 sq. ft	Yes
13	Hall	7'1" x 5'10"	41 sq. ft	Yes
14	Dining Area	14'11" x 13'3"	159 sq. ft	Yes
15	Garage	10'3" x 14'9"	151 sq. ft	No
16	Living Room	17'0" x 12'1"	205 sq. ft	Yes

Home data report

744 Glengrove St,Oshawa,ON,CA

#		Dimensions	sqft	Counted as living area
17	Entry	3'10" x 2'9"	24 sq. ft	Yes

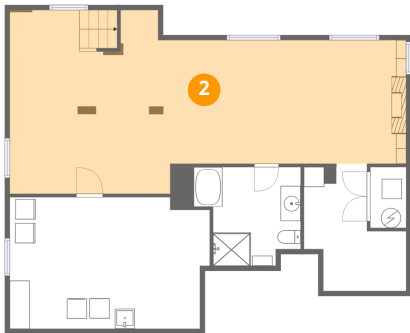
1 Floor 1 - Laundry



Dimensions: 20'1" x 13'2"
Area: 254 sq. ft
Counted as living area: Yes

Heated: Yes
Finished: Yes
Enclosed: Yes
Contiguous: Yes
Permitted: Yes
Wet space: No
Addition: No
Conversion: No

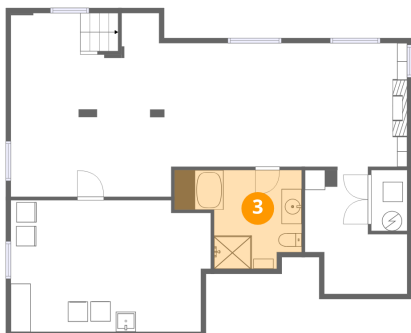
2 Floor 1 - Recreation Room



Dimensions: 39'9" x 18'5"
Area: 585 sq. ft
Counted as living area: Yes

Heated: Yes
Finished: Yes
Enclosed: Yes
Contiguous: Yes
Permitted: Yes
Wet space: No
Addition: No
Conversion: No

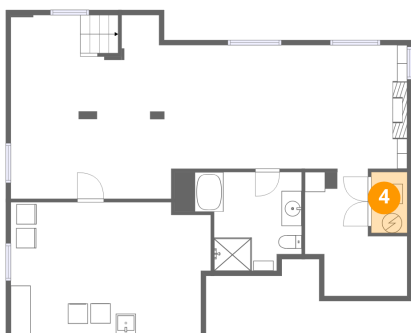
3 Floor 1 - Bath



Dimensions: 10'9" x 9'11"
Area: 99 sq. ft
Counted as living area: Yes

Heated: Yes
Finished: Yes
Enclosed: Yes
Contiguous: Yes
Permitted: Yes
Wet space: Yes
Addition: No
Conversion: No

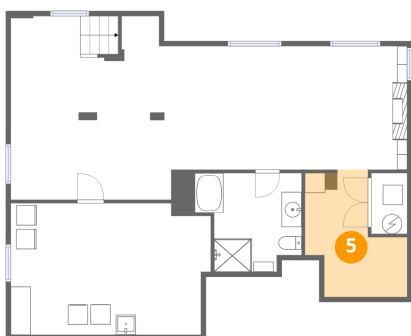
4 Floor 1 - Utility



Dimensions: 3'7" x 6'1"
Area: 22 sq. ft
Counted as living area: No

Heated: Yes
Finished: No
Enclosed: Yes
Contiguous: Yes
Permitted: Yes
Wet space: No
Addition: No
Conversion: No

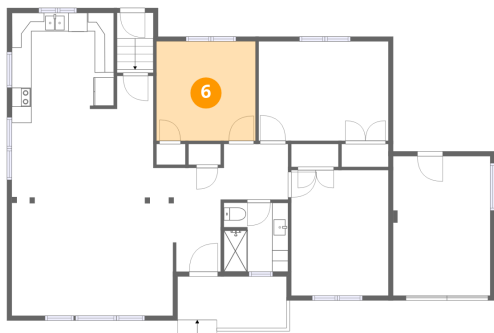
5 Floor 1 - Exercise Room



Dimensions: 10'3" x 12'9"
Area: 95 sq. ft
Counted as living area: Yes

Heated: Yes
Finished: Yes
Enclosed: Yes
Contiguous: Yes
Permitted: Yes
Wet space: No
Addition: No
Conversion: No

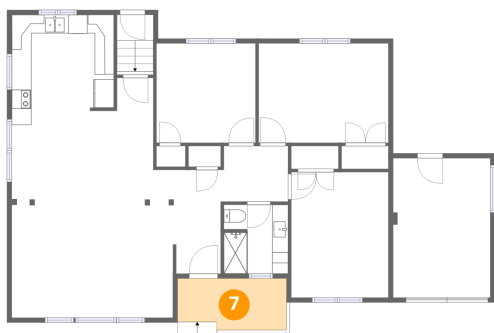
6 Floor 2 - Bedroom



Dimensions: 10'5" x 10'6"
Area: 110 sq. ft
Counted as living area: Yes

Heated: Yes
Finished: Yes
Enclosed: Yes
Contiguous: Yes
Permitted: Yes
Wet space: No
Addition: No
Conversion: No

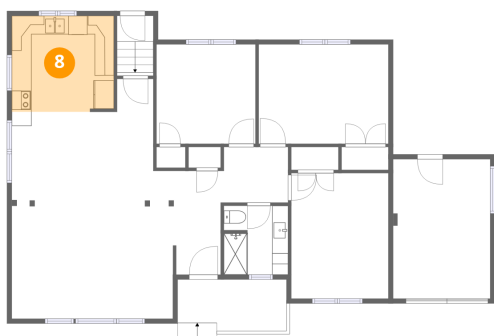
7 Floor 2 - Porch



Dimensions: 11'5" x 5'5"
Area: 59 sq. ft
Counted as living area: No

Heated: No
Finished: No
Enclosed: No
Contiguous: Yes
Permitted: Yes
Wet space: No
Addition: No
Conversion: No

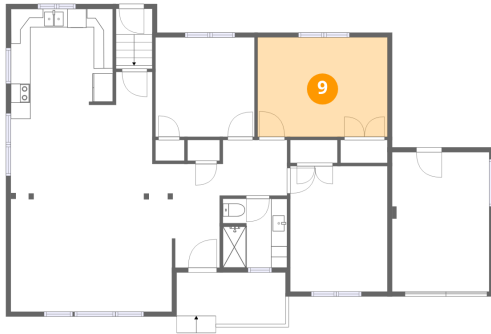
8 Floor 2 - Kitchen



Dimensions: 10'9" x 10'1"
Area: 108 sq. ft
Counted as living area: Yes

Heated: Yes
Finished: Yes
Enclosed: Yes
Contiguous: Yes
Permitted: Yes
Wet space: No
Addition: No
Conversion: No

9 Floor 2 - Primary Bedroom



Dimensions: 13'8" x 10'6"
Area: 144 sq. ft
Counted as living area: Yes

Heated: Yes
Finished: Yes
Enclosed: Yes
Contiguous: Yes
Permitted: Yes
Wet space: No
Addition: No
Conversion: No

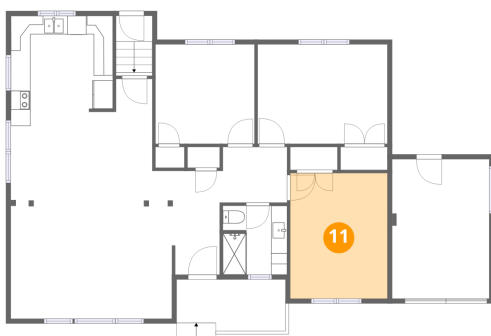
10 Floor 2 - Bath



Dimensions: 6'9" x 7'3"
Area: 49 sq. ft
Counted as living area: Yes

Heated: Yes
Finished: Yes
Enclosed: Yes
Contiguous: Yes
Permitted: Yes
Wet space: Yes
Addition: No
Conversion: No

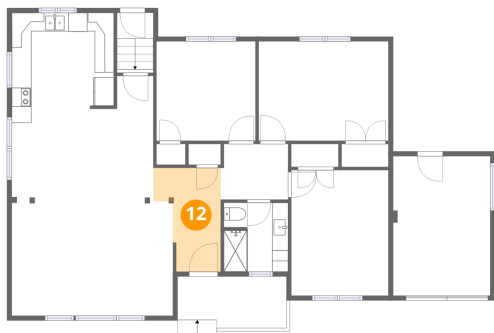
11 Floor 2 - Bedroom



Dimensions: 10'3" x 13'3"
Area: 136 sq. ft
Counted as living area: Yes

Heated: Yes
Finished: Yes
Enclosed: Yes
Contiguous: Yes
Permitted: Yes
Wet space: No
Addition: No
Conversion: No

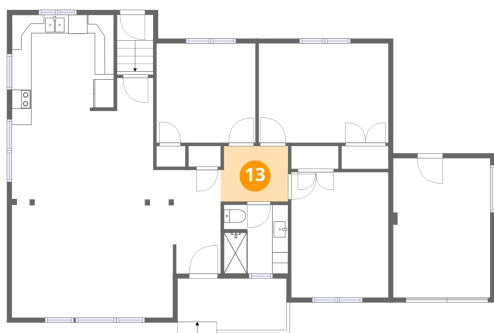
12 Floor 2 - Foyer



Dimensions: 7'1" x 10'11"
Area: 61 sq. ft
Counted as living area: Yes

Heated: Yes
Finished: Yes
Enclosed: Yes
Contiguous: Yes
Permitted: Yes
Wet space: No
Addition: No
Conversion: No

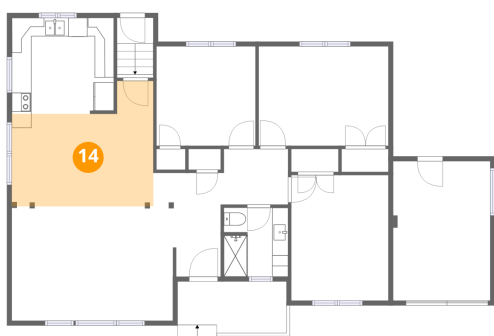
13 Floor 2 - Hall



Dimensions: 7'1" x 5'10"
Area: 41 sq. ft
Counted as living area: Yes

Heated: Yes
Finished: Yes
Enclosed: Yes
Contiguous: Yes
Permitted: Yes
Wet space: No
Addition: No
Conversion: No

14 Floor 2 - Dining Area



Dimensions: 14'11" x 13'3"
Area: 159 sq. ft
Counted as living area: Yes

Heated: Yes
Finished: Yes
Enclosed: Yes
Contiguous: Yes
Permitted: Yes
Wet space: No
Addition: No
Conversion: No

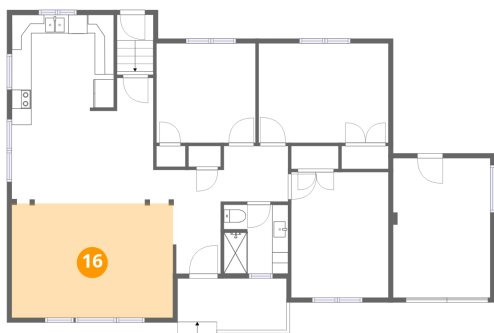
15 Floor 2 - Garage



Dimensions: 10'3" x 14'9"
Area: 151 sq. ft
Counted as living area: No

Heated: No
Finished: No
Enclosed: Yes
Contiguous: Yes
Permitted: Yes
Wet space: No
Addition: No
Conversion: No

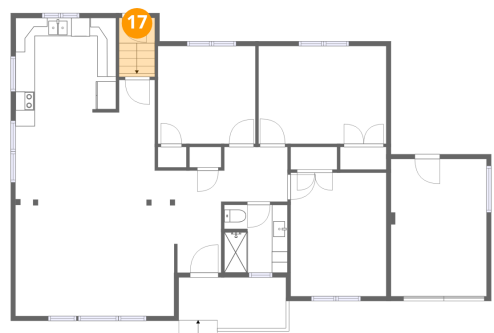
16 Floor 2 - Living Room



Dimensions: 17'0" x 12'1"
Area: 205 sq. ft
Counted as living area: Yes

Heated: Yes
Finished: Yes
Enclosed: Yes
Contiguous: Yes
Permitted: Yes
Wet space: No
Addition: No
Conversion: No

17 Floor 2 - Entry



Dimensions: 3'10" x 2'9"
Area: 24 sq. ft
Counted as living area: Yes

Heated: Yes
Finished: Yes
Enclosed: Yes
Contiguous: Yes
Permitted: Yes
Wet space: No
Addition: No
Conversion: No