

Home data report

5424 Crescent Boulevard, Crescent Heights, Cave Spring,
Roanoke, Roanoke County, Virginia, United States, 24018



Total Area: 754 sq. ft

Below Ground: 0 sq. ft, 1st Floor: 754 sq. ft

Excluded: Storage 133 sq. ft, Basement 361 sq. ft, Utility 261 sq. ft, Porch 138 sq. ft, Deck 232 sq. ft, Walls: 113 sq. ft

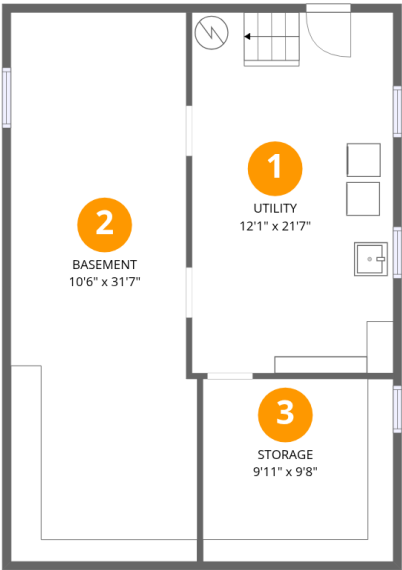
Property summary

 **2** Floors

 **2** Bedrooms

 **1** Bathrooms

5424 Crescent Boulevard, Crescent Heights, Cave Spring,
Roanoke, Roanoke County, Virginia, United States, 24018



Room dimensions

Floor 1 Below grade Total:0sqft Excluded: 755sqft

#		Dimensions	sqft	Counted as living area
1	Utility	12'1" x 21'7"	261 sq. ft	No
2	Basement	10'6" x 31'7"	353 sq. ft	No
3	Storage	9'11" x 9'8"	125 sq. ft	No

Home data report

5424 Crescent Boulevard, Crescent Heights, Cave Spring,
Roanoke, Roanoke County, Virginia, United States, 24018



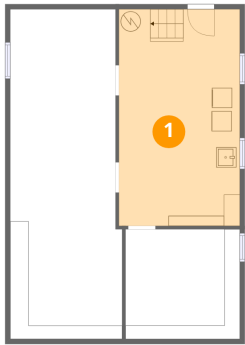
Room dimensions

Floor 2 Total:754sqft Excluded: 370sqft

#		Dimensions	sqft	Counted as living area
4	Bedroom	11'5" x 12'11"	133 sq. ft	Yes
5	Porch	19'10" x 7'0"	138 sq. ft	No
6	Deck	15'3" x 15'2"	232 sq. ft	No
7	Kitchen	11'2" x 12'7"	140 sq. ft	Yes
8	Living Room	11'2" x 12'11"	144 sq. ft	Yes
9	Dining Area	11'2" x 7'5"	80 sq. ft	Yes
10	Hall	3'4" x 5'2"	17 sq. ft	Yes
11	Bath	7'9" x 5'2"	40 sq. ft	Yes
12	Bedroom	11'5" x 10'11"	125 sq. ft	Yes

5424 Crescent Boulevard, Crescent Heights, Cave Spring,
Roanoke, Roanoke County, Virginia, United States, 24018

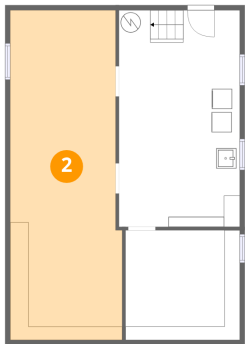
1 Floor 1 - Utility



Dimensions: 12'1" x 21'7"
Area: 261 sq. ft
Counted as living area: No

Heated: Yes
Finished: No
Enclosed: Yes
Contiguous: Yes
Permitted: Yes
Wet space: No
Addition: No
Conversion: No

2 Floor 1 - Basement

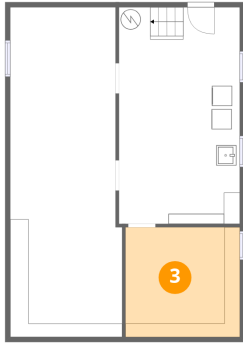


Dimensions: 10'6" x 31'7"
Area: 353 sq. ft
Counted as living area: No

Heated: Yes
Finished: No
Enclosed: Yes
Contiguous: Yes
Permitted: Yes
Wet space: No
Addition: No
Conversion: No

**5424 Crescent Boulevard, Crescent Heights, Cave Spring,
Roanoke, Roanoke County, Virginia, United States, 24018**

3 Floor 1 - Storage



Dimensions: 9'11" x 9'8"
Area: 125 sq. ft
Counted as living area: No

Heated: No
Finished: No
Enclosed: No
Contiguous: Yes
Permitted: Yes
Wet space: No
Addition: No
Conversion: No

4 Floor 2 - Bedroom



Dimensions: 11'5" x 12'11"
Area: 133 sq. ft
Counted as living area: Yes

Heated: Yes
Finished: Yes
Enclosed: Yes
Contiguous: Yes
Permitted: Yes
Wet space: No
Addition: No
Conversion: No

5 Floor 2 - Porch



Dimensions: 19'10" x 7'0"
Area: 138 sq. ft
Counted as living area: No

Heated: No
Finished: No
Enclosed: No
Contiguous: Yes
Permitted: Yes
Wet space: No
Addition: No
Conversion: No

6 Floor 2 - Deck



Dimensions: 15'3" x 15'2"
Area: 232 sq. ft
Counted as living area: No

Heated: No
Finished: No
Enclosed: No
Contiguous: Yes
Permitted: Yes
Wet space: No
Addition: No
Conversion: No

7 Floor 2 - Kitchen



Dimensions: 11'2" x 12'7"
Area: 140 sq. ft
Counted as living area: Yes

Heated: Yes
Finished: Yes
Enclosed: Yes
Contiguous: Yes
Permitted: Yes
Wet space: No
Addition: No
Conversion: No

8 Floor 2 - Living Room



Dimensions: 11'2" x 12'11"
Area: 144 sq. ft
Counted as living area: Yes

Heated: Yes
Finished: Yes
Enclosed: Yes
Contiguous: Yes
Permitted: Yes
Wet space: No
Addition: No
Conversion: No

9 Floor 2 - Dining Area



Dimensions: 11'2" x 7'5"
Area: 80 sq. ft
Counted as living area: Yes

Heated: Yes
Finished: Yes
Enclosed: Yes
Contiguous: Yes
Permitted: Yes
Wet space: No
Addition: No
Conversion: No

10 Floor 2 - Hall



Dimensions: 3'4" x 5'2"
Area: 17 sq. ft
Counted as living area: Yes

Heated: Yes
Finished: Yes
Enclosed: Yes
Contiguous: Yes
Permitted: Yes
Wet space: No
Addition: No
Conversion: No

11 Floor 2 - Bath



Dimensions: 7'9" x 5'2"
Area: 40 sq. ft
Counted as living area: Yes

Heated: Yes
Finished: Yes
Enclosed: Yes
Contiguous: Yes
Permitted: Yes
Wet space: Yes
Addition: No
Conversion: No

5424 Crescent Boulevard, Crescent Heights, Cave Spring,
Roanoke, Roanoke County, Virginia, United States, 24018

12 Floor 2 - Bedroom



Dimensions: 11'5" x 10'11"
Area: 125 sq. ft
Counted as living area: Yes

Heated: Yes
Finished: Yes
Enclosed: Yes
Contiguous: Yes
Permitted: Yes
Wet space: No
Addition: No
Conversion: No