

Home data report

220 Stoic St SE, Leesburg, VA, US



Total Area: 5424 sq. ft

Basement: 1548 sq. ft, 1st Floor: 1934 sq. ft, 2nd Floor: 1942 sq. ft

Excluded: Utility 242 sq. ft, Garage 512 sq. ft, Walls: 354 sq. ft

Property summary

 **3** Floors

 **6** Bedrooms

 **5** Bathrooms

Home data report

220 Stoic St SE, Leesburg, VA, US

 **1**
Half baths

 **1**
Garages



Room dimensions

Floor 1 Below grade

Total: 1548 sqft

Excluded: 242 sqft

#		Dimensions	sqft	Counted as living area
1	W.I.C.	4'3" x 3'9"	16 sq. ft	Yes
2	Bath	6'9" x 9'9"	66 sq. ft	Yes
3	W.I.C.	10'7" x 4'0"	42 sq. ft	Yes
4	Recreation Room	21'2" x 29'9"	629 sq. ft	Yes
5	Room	16'4" x 28'9"	469 sq. ft	Yes
6	Utility	10'4" x 23'4"	242 sq. ft	No
7	Bedroom	14'3" x 14'11"	212 sq. ft	Yes
8	Basement	19'11" x 23'3"	463 sq. ft	Yes



Room dimensions

Floor 2

Total:1934sqft Excluded: 512sqft

#		Dimensions	sqft	Counted as living area
9	Bath	6'0" x 7'8"	46 sq. ft	Yes
10	Foyer	7'1" x 15'0"	106 sq. ft	Yes
11	Garage	23'6" x 22'2"	521 sq. ft	No
12	W.I.C.	3'2" x 5'10"	19 sq. ft	Yes
13	Office	12'2" x 14'8"	178 sq. ft	Yes
14	Dining Room	12'9" x 14'8"	187 sq. ft	Yes
15	Living Room	18'5" x 20'8"	380 sq. ft	Yes
16	Pantry	5'6" x 4'9"	26 sq. ft	Yes
17	Breakfast Nook	14'2" x 13'7"	192 sq. ft	Yes
18	Kitchen	14'2" x 16'10"	238 sq. ft	Yes
19	Bedroom	11'11" x 10'9"	128 sq. ft	Yes

Home data report

220 Stoic St SE, Leesburg, VA, US

#		Dimensions	sqft	Counted as living area
20	Bath	8'5" x 5'10"	49 sq. ft	Yes
21	Hall	6'5" x 7'8"	49 sq. ft	Yes
22	Hall	9'4" x 8'0"	75 sq. ft	Yes
23	Hall	10'0" x 17'0"	169 sq. ft	Yes



Room dimensions

Floor 3

Total: 1942 sqft

Excluded: 0 sqft

#		Dimensions	sqft	Counted as living area
24	W.I.C.	4'6" x 4'6"	20 sq. ft	Yes
25	Laundry	13'3" x 6'7"	87 sq. ft	Yes
26	Primary Bedroom	18'11" x 26'8"	504 sq. ft	Yes
27	Hall	8'2" x 3'5"	28 sq. ft	Yes
28	Bedroom	13'3" x 14'8"	195 sq. ft	Yes
29	Bath	7'9" x 5'8"	44 sq. ft	Yes
30	Bath	9'3" x 7'7"	70 sq. ft	Yes
31	Hall	9'6" x 14'9"	140 sq. ft	Yes
32	Bath	7'9" x 5'3"	41 sq. ft	Yes
33	W.I.C.	8'6" x 4'6"	38 sq. ft	Yes
34	Bath	3'1" x 6'0"	18 sq. ft	Yes

Home data report

220 Stoic St SE, Leesburg, VA, US

#		Dimensions	sqft	Counted as living area
35	Bedroom	10'11" x 14'8"	161 sq. ft	Yes
36	W.I.C.	7'10" x 6'11"	54 sq. ft	Yes
37	Primary Bath	13'9" x 17'0"	233 sq. ft	Yes
38	W.I.C.	9'6" x 6'0"	57 sq. ft	Yes
39	Bedroom	13'4" x 16'11"	226 sq. ft	Yes

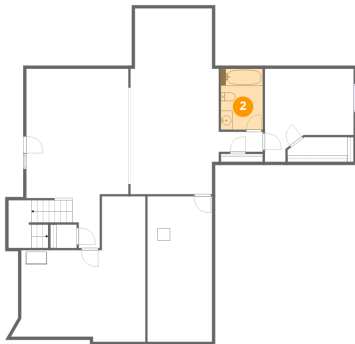
1 Floor 1 - W.I.C.



Dimensions: 4'3" x 3'9"
Area: 16 sq. ft
Counted as living area: Yes

Heated: Yes
Finished: Yes
Enclosed: Yes
Contiguous: Yes
Permitted: Yes
Wet space: No
Addition: No
Conversion: No

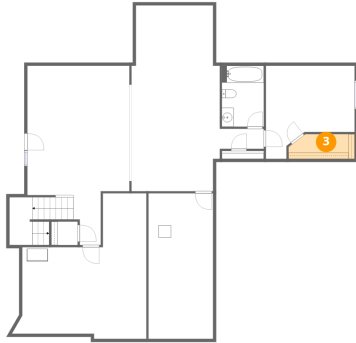
2 Floor 1 - Bath



Dimensions: 6'9" x 9'9"
Area: 66 sq. ft
Counted as living area: Yes

Heated: Yes
Finished: Yes
Enclosed: Yes
Contiguous: Yes
Permitted: Yes
Wet space: Yes
Addition: No
Conversion: No

3 Floor 1 - W.I.C.



Dimensions: 10'7" x 4'0"
Area: 42 sq. ft
Counted as living area: Yes

Heated: Yes
Finished: Yes
Enclosed: Yes
Contiguous: Yes
Permitted: Yes
Wet space: No
Addition: No
Conversion: No

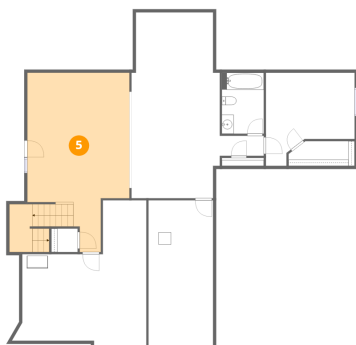
4 Floor 1 - Recreation Room



Dimensions: 21'2" x 29'9"
Area: 629 sq. ft
Counted as living area: Yes

Heated: Yes
Finished: Yes
Enclosed: Yes
Contiguous: Yes
Permitted: Yes
Wet space: No
Addition: No
Conversion: No

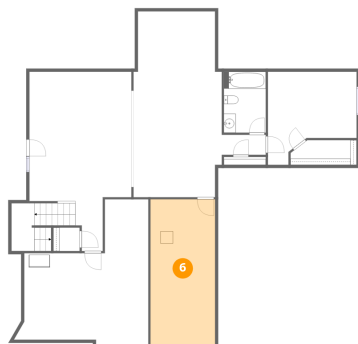
5 Floor 1 - Room



Dimensions: 16'4" x 28'9"
Area: 469 sq. ft
Counted as living area: Yes

Heated: Yes
Finished: Yes
Enclosed: Yes
Contiguous: Yes
Permitted: Yes
Wet space: No
Addition: No
Conversion: No

6 Floor 1 - Utility



Dimensions: 10'4" x 23'4"
Area: 242 sq. ft
Counted as living area: No

Heated: Yes
Finished: No
Enclosed: Yes
Contiguous: Yes
Permitted: Yes
Wet space: No
Addition: No
Conversion: No

7 Floor 1 - Bedroom



Dimensions: 14'3" x 14'11"
Area: 212 sq. ft
Counted as living area: Yes

Heated: Yes
Finished: Yes
Enclosed: Yes
Contiguous: Yes
Permitted: Yes
Wet space: No
Addition: No
Conversion: No

8 Floor 1 - Basement



Dimensions: 19'11" x 23'3"
Area: 463 sq. ft
Counted as living area: Yes

Heated: Yes
Finished: Yes
Enclosed: Yes
Contiguous: Yes
Permitted: Yes
Wet space: No
Addition: No
Conversion: No

9 Floor 2 - Bath



Dimensions: 6'0" x 7'8"
Area: 46 sq. ft
Counted as living area: Yes

Heated: Yes
Finished: Yes
Enclosed: Yes
Contiguous: Yes
Permitted: Yes
Wet space: Yes
Addition: No
Conversion: No

10 Floor 2 - Foyer



Dimensions: 7'1" x 15'0"
Area: 106 sq. ft
Counted as living area: Yes

Heated: Yes
Finished: Yes
Enclosed: Yes
Contiguous: Yes
Permitted: Yes
Wet space: No
Addition: No
Conversion: No

11 Floor 2 - Garage



Dimensions: 23'6" x 22'2"
Area: 521 sq. ft
Counted as living area: No

Heated: No
Finished: No
Enclosed: Yes
Contiguous: Yes
Permitted: Yes
Wet space: No
Addition: No
Conversion: No

12 Floor 2 - W.I.C.



Dimensions: 3'2" x 5'10"
Area: 19 sq. ft
Counted as living area: Yes

Heated: Yes
Finished: Yes
Enclosed: Yes
Contiguous: Yes
Permitted: Yes
Wet space: No
Addition: No
Conversion: No

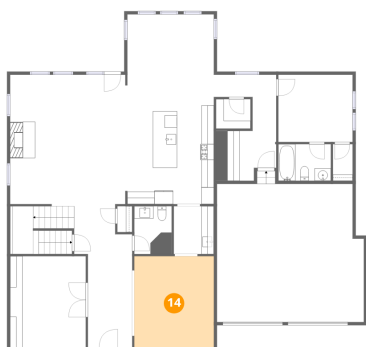
13 Floor 2 - Office



Dimensions: 12'2" x 14'8"
Area: 178 sq. ft
Counted as living area: Yes

Heated: Yes
Finished: Yes
Enclosed: Yes
Contiguous: Yes
Permitted: Yes
Wet space: No
Addition: No
Conversion: No

14 Floor 2 - Dining Room



Dimensions: 12'9" x 14'8"
Area: 187 sq. ft
Counted as living area: Yes

Heated: Yes
Finished: Yes
Enclosed: Yes
Contiguous: Yes
Permitted: Yes
Wet space: No
Addition: No
Conversion: No

15 Floor 2 - Living Room



Dimensions: 18'5" x 20'8"
Area: 380 sq. ft
Counted as living area: Yes

Heated: Yes
Finished: Yes
Enclosed: Yes
Contiguous: Yes
Permitted: Yes
Wet space: No
Addition: No
Conversion: No

16 Floor 2 - Pantry



Dimensions: 5'6" x 4'9"
Area: 26 sq. ft
Counted as living area: Yes

Heated: Yes
Finished: Yes
Enclosed: Yes
Contiguous: Yes
Permitted: Yes
Wet space: No
Addition: No
Conversion: No

17 Floor 2 - Breakfast Nook



Dimensions: 14'2" x 13'7"
Area: 192 sq. ft
Counted as living area: Yes

Heated: Yes
Finished: Yes
Enclosed: Yes
Contiguous: Yes
Permitted: Yes
Wet space: No
Addition: No
Conversion: No

18 Floor 2 - Kitchen



Dimensions: 14'2" x 16'10"
Area: 238 sq. ft
Counted as living area: Yes

Heated: Yes
Finished: Yes
Enclosed: Yes
Contiguous: Yes
Permitted: Yes
Wet space: No
Addition: No
Conversion: No

19 Floor 2 - Bedroom



Dimensions: 11'11" x 10'9"
Area: 128 sq. ft
Counted as living area: Yes

Heated: Yes
Finished: Yes
Enclosed: Yes
Contiguous: Yes
Permitted: Yes
Wet space: No
Addition: No
Conversion: No

20 Floor 2 - Bath



Dimensions: 8'5" x 5'10"
Area: 49 sq. ft
Counted as living area: Yes

Heated: Yes
Finished: Yes
Enclosed: Yes
Contiguous: Yes
Permitted: Yes
Wet space: Yes
Addition: No
Conversion: No

21 Floor 2 - Hall



Dimensions: 6'5" x 7'8"
Area: 49 sq. ft
Counted as living area: Yes

Heated: Yes
Finished: Yes
Enclosed: Yes
Contiguous: Yes
Permitted: Yes
Wet space: No
Addition: No
Conversion: No

22 Floor 2 - Hall



Dimensions: 9'4" x 8'0"
Area: 75 sq. ft
Counted as living area: Yes

Heated: Yes
Finished: Yes
Enclosed: Yes
Contiguous: Yes
Permitted: Yes
Wet space: No
Addition: No
Conversion: No

23 Floor 2 - Hall



Dimensions: 10'0" x 17'0"
Area: 169 sq. ft
Counted as living area: Yes

Heated: Yes
Finished: Yes
Enclosed: Yes
Contiguous: Yes
Permitted: Yes
Wet space: No
Addition: No
Conversion: No

24 Floor 3 - W.I.C.



Dimensions: 4'6" x 4'6"
Area: 20 sq. ft
Counted as living area: Yes

Heated: Yes
Finished: Yes
Enclosed: Yes
Contiguous: Yes
Permitted: Yes
Wet space: No
Addition: No
Conversion: No

25 Floor 3 - Laundry



Dimensions: 13'3" x 6'7"
Area: 87 sq. ft
Counted as living area: Yes

Heated: Yes
Finished: Yes
Enclosed: Yes
Contiguous: Yes
Permitted: Yes
Wet space: No
Addition: No
Conversion: No

26 Floor 3 - Primary Bedroom



Dimensions: 18'11" x 26'8"
Area: 504 sq. ft
Counted as living area: Yes

Heated: Yes
Finished: Yes
Enclosed: Yes
Contiguous: Yes
Permitted: Yes
Wet space: No
Addition: No
Conversion: No

27 Floor 3 - Hall



Dimensions: 8'2" x 3'5"
Area: 28 sq. ft
Counted as living area: Yes

Heated: Yes
Finished: Yes
Enclosed: Yes
Contiguous: Yes
Permitted: Yes
Wet space: No
Addition: No
Conversion: No

28 Floor 3 - Bedroom



Dimensions: 13'3" x 14'8"
Area: 195 sq. ft
Counted as living area: Yes

Heated: Yes
Finished: Yes
Enclosed: Yes
Contiguous: Yes
Permitted: Yes
Wet space: No
Addition: No
Conversion: No

29 Floor 3 - Bath



Dimensions: 7'9" x 5'8"
Area: 44 sq. ft
Counted as living area: Yes

Heated: Yes
Finished: Yes
Enclosed: Yes
Contiguous: Yes
Permitted: Yes
Wet space: Yes
Addition: No
Conversion: No

30 Floor 3 - Bath



Dimensions: 9'3" x 7'7"
Area: 70 sq. ft
Counted as living area: Yes

Heated: Yes
Finished: Yes
Enclosed: Yes
Contiguous: Yes
Permitted: Yes
Wet space: Yes
Addition: No
Conversion: No

31 Floor 3 - Hall



Dimensions: 9'6" x 14'9"
Area: 140 sq. ft
Counted as living area: Yes

Heated: Yes
Finished: Yes
Enclosed: Yes
Contiguous: Yes
Permitted: Yes
Wet space: No
Addition: No
Conversion: No

32 Floor 3 - Bath



Dimensions: 7'9" x 5'3"
Area: 41 sq. ft
Counted as living area: Yes

Heated: Yes
Finished: Yes
Enclosed: Yes
Contiguous: Yes
Permitted: Yes
Wet space: Yes
Addition: No
Conversion: No

33 Floor 3 - W.I.C.



Dimensions: 8'6" x 4'6"
Area: 38 sq. ft
Counted as living area: Yes

Heated: Yes
Finished: Yes
Enclosed: Yes
Contiguous: Yes
Permitted: Yes
Wet space: No
Addition: No
Conversion: No

34 Floor 3 - Bath



Dimensions: 3'1" x 6'0"
Area: 18 sq. ft
Counted as living area: Yes

Heated: Yes
Finished: Yes
Enclosed: Yes
Contiguous: Yes
Permitted: Yes
Wet space: Yes
Addition: No
Conversion: No

35 Floor 3 - Bedroom



Dimensions: 10'11" x 14'8"
Area: 161 sq. ft
Counted as living area: Yes

Heated: Yes
Finished: Yes
Enclosed: Yes
Contiguous: Yes
Permitted: Yes
Wet space: No
Addition: No
Conversion: No

36 Floor 3 - W.I.C.



Dimensions: 7'10" x 6'11"
Area: 54 sq. ft
Counted as living area: Yes

Heated: Yes
Finished: Yes
Enclosed: Yes
Contiguous: Yes
Permitted: Yes
Wet space: No
Addition: No
Conversion: No

37 Floor 3 - Primary Bath



Dimensions: 13'9" x 17'0"
Area: 233 sq. ft
Counted as living area: Yes

Heated: Yes
Finished: Yes
Enclosed: Yes
Contiguous: Yes
Permitted: Yes
Wet space: Yes
Addition: No
Conversion: No

38 Floor 3 - W.I.C.



Dimensions: 9'6" x 6'0"
Area: 57 sq. ft
Counted as living area: Yes

Heated: Yes
Finished: Yes
Enclosed: Yes
Contiguous: Yes
Permitted: Yes
Wet space: No
Addition: No
Conversion: No

39 Floor 3 - Bedroom



Dimensions: 13'4" x 16'11"
Area: 226 sq. ft
Counted as living area: Yes

Heated: Yes
Finished: Yes
Enclosed: Yes
Contiguous: Yes
Permitted: Yes
Wet space: No
Addition: No
Conversion: No