

Home data report

2445 Kennington Rd, Knoxville, TN, US




Total Area: 1489 sq. ft

Basement: 0 sq. ft, 1st Floor: 1109 sq. ft, 2nd Floor: 380 sq. ft

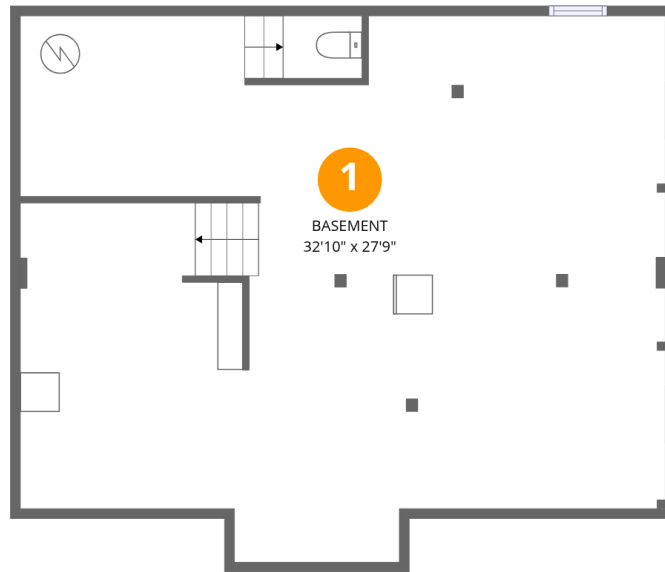
Excluded: Basement 846 sq. ft, Fireplace 12 sq. ft, Low ceiling 24 sq. ft, Walls: 183 sq. ft

Property summary

 **3** Floors

 **3** Bedrooms

 **1** Bathrooms



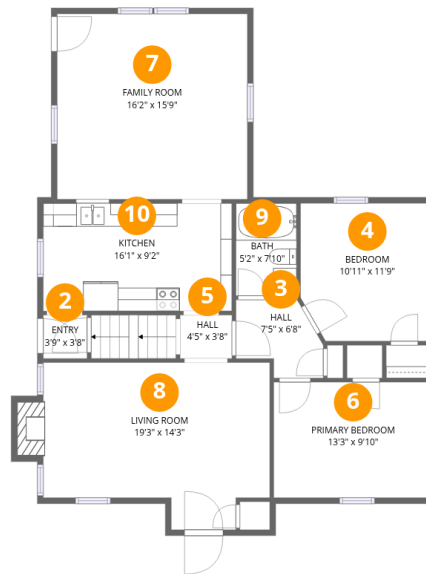
Room dimensions

Floor 1 Below grade

Total: 0sqft

Excluded: 846sqft

#		Dimensions	sqft	Counted as living area
1	Basement	32'10" x 27'9"	911 sq. ft	No

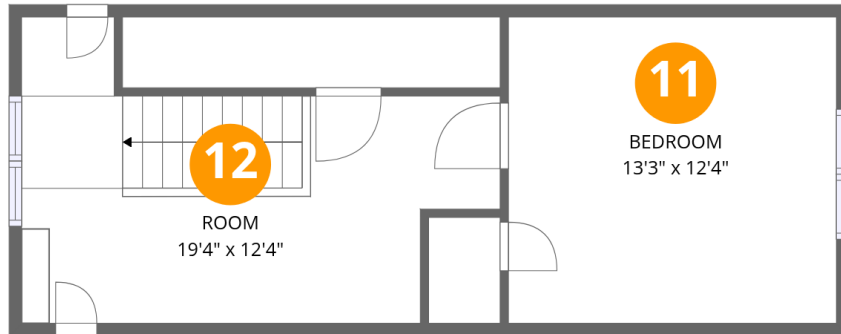


Room dimensions

Floor 2

Total: 1109 sqft Excluded: 12 sqft

#		Dimensions	sqft	Counted as living area
2	Entry	3'9" x 3'8"	14 sq. ft	Yes
3	Hall	7'5" x 6'8"	50 sq. ft	Yes
4	Bedroom	10'11" x 11'9"	128 sq. ft	Yes
5	Hall	4'5" x 3'8"	16 sq. ft	Yes
6	Primary Bedroom	13'3" x 9'10"	130 sq. ft	Yes
7	Family Room	16'2" x 15'9"	255 sq. ft	Yes
8	Living Room	19'3" x 14'3"	274 sq. ft	Yes
9	Bath	5'2" x 7'10"	41 sq. ft	Yes
10	Kitchen	16'1" x 9'2"	148 sq. ft	Yes



Room dimensions

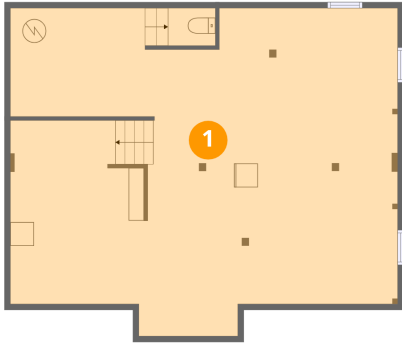
Floor 3

Total:380sqft

Excluded: 24sqft

#		Dimensions	sqft	Counted as living area
11	Bedroom	13'3" x 12'4"	163 sq. ft	Yes
12	Room	19'4" x 12'4"	238 sq. ft	Yes

1 Floor 1 - Basement



Dimensions: 32'10" x 27'9"
Area: 911 sq. ft
Counted as living area: No

Heated: Yes
Finished: No
Enclosed: Yes
Contiguous: Yes
Permitted: Yes
Wet space: No
Addition: No
Conversion: No

2 Floor 2 - Entry



Dimensions: 3'9" x 3'8"
Area: 14 sq. ft
Counted as living area: Yes

Heated: Yes
Finished: Yes
Enclosed: Yes
Contiguous: Yes
Permitted: Yes
Wet space: No
Addition: No
Conversion: No

3 Floor 2 - Hall



Dimensions: 7'5" x 6'8"
Area: 50 sq. ft
Counted as living area: Yes

Heated: Yes
Finished: Yes
Enclosed: Yes
Contiguous: Yes
Permitted: Yes
Wet space: No
Addition: No
Conversion: No

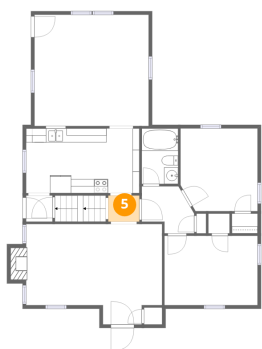
4 Floor 2 - Bedroom



Dimensions: 10'11" x 11'9"
Area: 128 sq. ft
Counted as living area: Yes

Heated: Yes
Finished: Yes
Enclosed: Yes
Contiguous: Yes
Permitted: Yes
Wet space: No
Addition: No
Conversion: No

5 Floor 2 - Hall



Dimensions: 4'5" x 3'8"
Area: 16 sq. ft
Counted as living area: Yes

Heated: Yes
Finished: Yes
Enclosed: Yes
Contiguous: Yes
Permitted: Yes
Wet space: No
Addition: No
Conversion: No

6 Floor 2 - Primary Bedroom



Dimensions: 13'3" x 9'10"
Area: 130 sq. ft
Counted as living area: Yes

Heated: Yes
Finished: Yes
Enclosed: Yes
Contiguous: Yes
Permitted: Yes
Wet space: No
Addition: No
Conversion: No

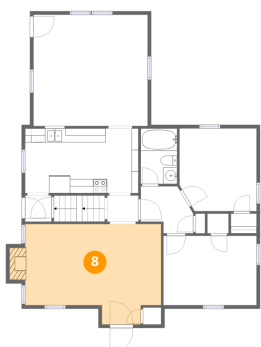
7 Floor 2 - Family Room



Dimensions: 16'2" x 15'9"
Area: 255 sq. ft
Counted as living area: Yes

Heated: Yes
Finished: Yes
Enclosed: Yes
Contiguous: Yes
Permitted: Yes
Wet space: No
Addition: No
Conversion: No

8 Floor 2 - Living Room



Dimensions: 19'3" x 14'3"
Area: 274 sq. ft
Counted as living area: Yes

Heated: Yes
Finished: Yes
Enclosed: Yes
Contiguous: Yes
Permitted: Yes
Wet space: No
Addition: No
Conversion: No

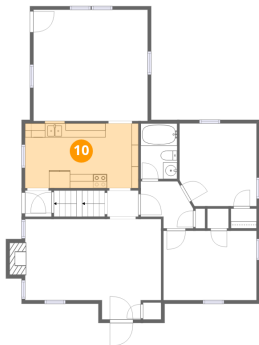
9 Floor 2 - Bath



Dimensions: 5'2" x 7'10"
Area: 41 sq. ft
Counted as living area: Yes

Heated: Yes
Finished: Yes
Enclosed: Yes
Contiguous: Yes
Permitted: Yes
Wet space: Yes
Addition: No
Conversion: No

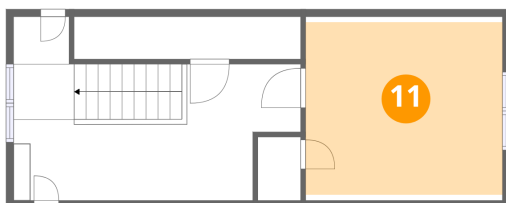
10 Floor 2 - Kitchen



Dimensions: 16'1" x 9'2"
Area: 148 sq. ft
Counted as living area: Yes

Heated: Yes
Finished: Yes
Enclosed: Yes
Contiguous: Yes
Permitted: Yes
Wet space: No
Addition: No
Conversion: No

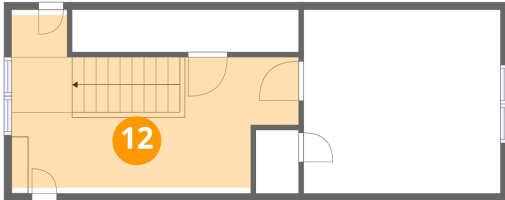
11 Floor 3 - Bedroom



Dimensions: 13'3" x 12'4"
Area: 163 sq. ft
Counted as living area: Yes

Heated: Yes
Finished: Yes
Enclosed: Yes
Contiguous: Yes
Permitted: Yes
Wet space: No
Addition: No
Conversion: No

12 Floor 3 - Room



Dimensions: 19'4" x 12'4"
Area: 238 sq. ft
Counted as living area: Yes

Heated: Yes
Finished: Yes
Enclosed: Yes
Contiguous: Yes
Permitted: Yes
Wet space: No
Addition: No
Conversion: No