



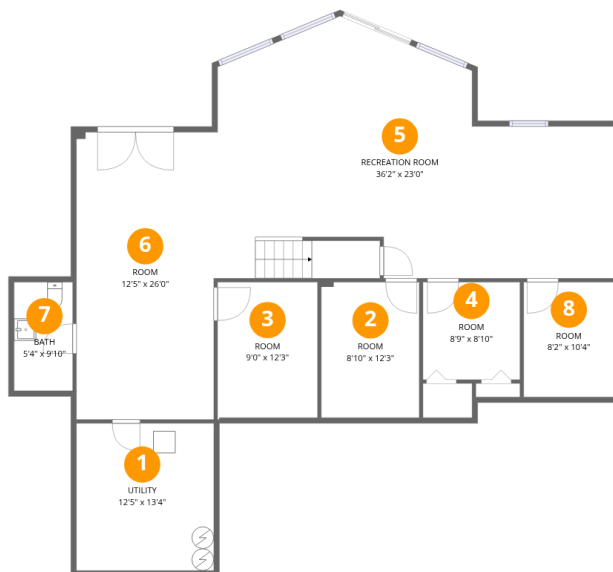
Total Area: 3466 sq. ft

Basement: 1159 sq. ft, 1st Floor: 1940 sq. ft, 2nd Floor: 367 sq. ft

Excluded: Utility 170 sq. ft, Room 323 sq. ft, Deck 337 sq. ft, Porch 58 sq. ft, Open to below 436 sq. ft, Walls: 277 sq. ft

Property summary





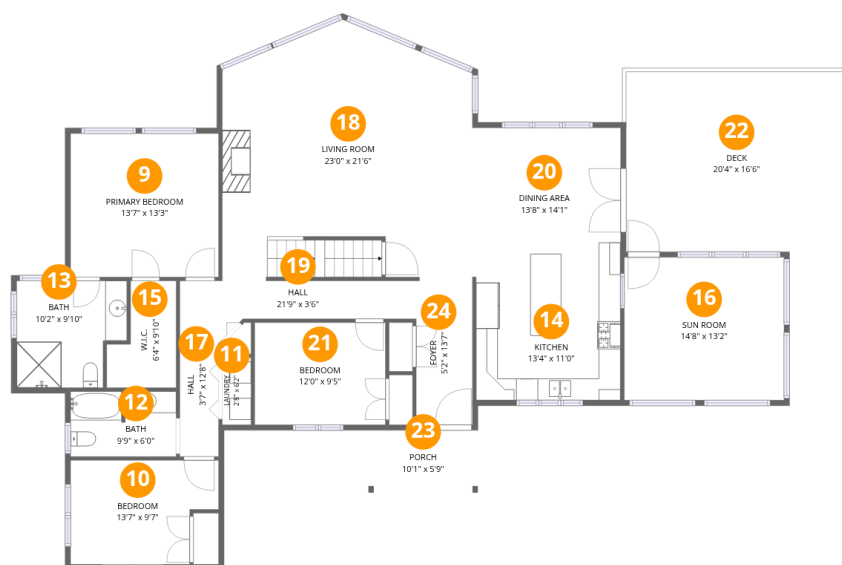
Room dimensions

Floor 1 Below grade

Total: 1159sqft

Excluded: 493sqft

#		Dimensions	sqft	Counted as living area
1	Utility	12'5" x 13'4"	165 sq. ft	No
2	Room	8'10" x 12'3"	109 sq. ft	Yes
3	Room	9'0" x 12'3"	111 sq. ft	Yes
4	Room	8'9" x 8'10"	77 sq. ft	Yes
5	Recreation Room	36'2" x 23'0"	668 sq. ft	Yes
6	Room	12'5" x 26'0"	323 sq. ft	No
7	Bath	5'4" x 9'10"	52 sq. ft	Yes
8	Room	8'2" x 10'4"	85 sq. ft	Yes



Room dimensions

Floor 2

Total: 1940sqft

Excluded: 395sqft

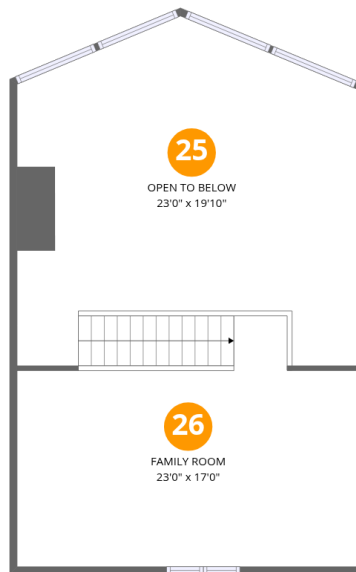
#		Dimensions	sqft	Counted as living area
9	Primary Bedroom	13'7" x 13'3"	180 sq. ft	Yes
10	Bedroom	13'7" x 9'7"	117 sq. ft	Yes
11	Laundry	2'8" x 6'2"	16 sq. ft	Yes
12	Bath	9'9" x 6'0"	57 sq. ft	Yes
13	Bath	10'2" x 9'10"	90 sq. ft	Yes
14	Kitchen	13'4" x 11'0"	146 sq. ft	Yes
15	W.I.C.	6'4" x 9'10"	50 sq. ft	Yes
16	Sun Room	14'8" x 13'2"	193 sq. ft	Yes
17	Hall	3'7" x 12'8"	48 sq. ft	Yes
18	Living Room	23'0" x 21'6"	488 sq. ft	Yes
19	Hall	21'9" x 3'6"	76 sq. ft	Yes

Home data report

1215 ON-118, Bracebridge, ON, CA



#		Dimensions	sqft	Counted as living area
20	Dining Area	13'8" x 14'1"	192 sq. ft	Yes
21	Bedroom	12'0" x 9'5"	113 sq. ft	Yes
22	Deck	20'4" x 16'6"	337 sq. ft	No
23	Porch	10'1" x 5'9"	58 sq. ft	No
24	Foyer	5'2" x 13'7"	70 sq. ft	Yes



Room dimensions

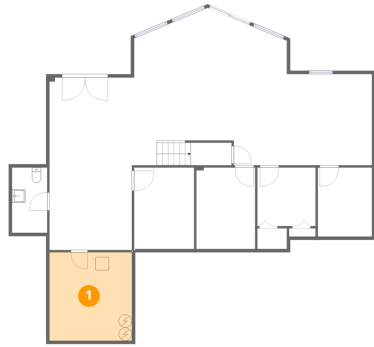
Floor 3

Total: 367 sqft

Excluded: 436 sqft

#		Dimensions	sqft	Counted as living area
25	Open To Below	23'0" x 19'10"	436 sq. ft	No
26	Family Room	23'0" x 17'0"	364 sq. ft	Yes

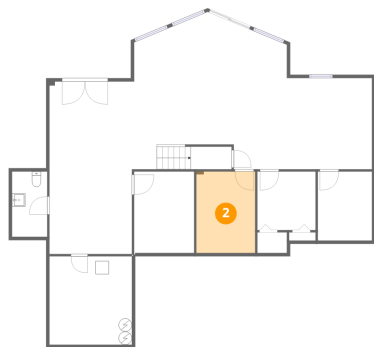
1 Floor 1 - Utility



Dimensions: 12'5" x 13'4"
Area: 165 sq. ft
Counted as living area: No

Heated: Yes
Finished: No
Enclosed: Yes
Contiguous: Yes
Permitted: Yes
Wet space: No
Addition: No
Conversion: No

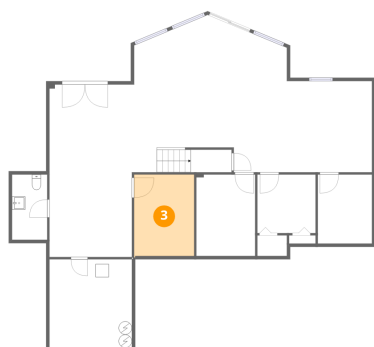
2 Floor 1 - Room



Dimensions: 8'10" x 12'3"
Area: 109 sq. ft
Counted as living area: Yes

Heated: Yes
Finished: Yes
Enclosed: Yes
Contiguous: Yes
Permitted: Yes
Wet space: No
Addition: No
Conversion: No

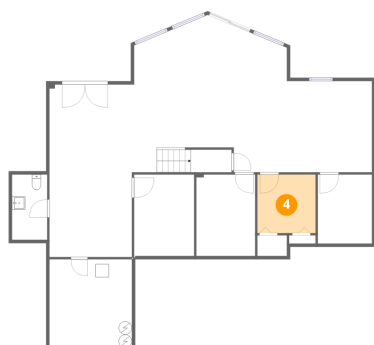
3 Floor 1 - Room



Dimensions: 9'0" x 12'3"
Area: 111 sq. ft
Counted as living area: No

Heated: Yes
Finished: Yes
Enclosed: Yes
Contiguous: No
Permitted: Yes
Wet space: No
Addition: No
Conversion: No

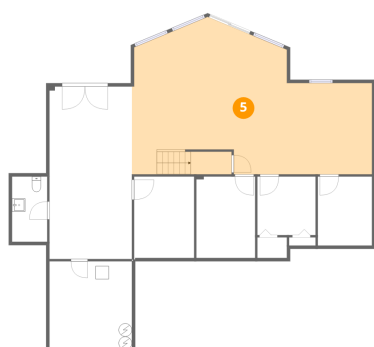
4 Floor 1 - Room



Dimensions: 8'9" x 8'10"
Area: 77 sq. ft
Counted as living area: Yes

Heated: Yes
Finished: Yes
Enclosed: Yes
Contiguous: Yes
Permitted: Yes
Wet space: No
Addition: No
Conversion: No

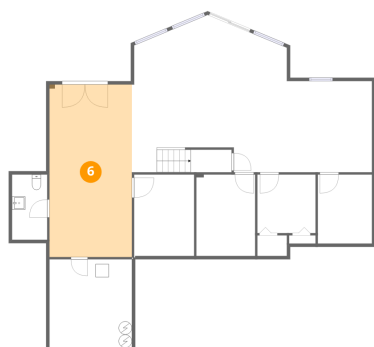
5 Floor 1 - Recreation Room



Dimensions: 36'2" x 23'0"
Area: 668 sq. ft
Counted as living area: Yes

Heated: Yes
Finished: Yes
Enclosed: Yes
Contiguous: Yes
Permitted: Yes
Wet space: No
Addition: No
Conversion: No

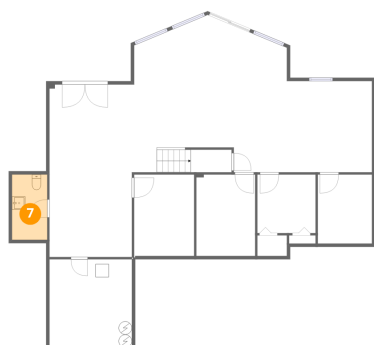
6 Floor 1 - Room



Dimensions: 12'5" x 26'0"
Area: 323 sq. ft
Counted as living area: No

Heated: Yes
Finished: No
Enclosed: Yes
Contiguous: Yes
Permitted: Yes
Wet space: No
Addition: No
Conversion: No

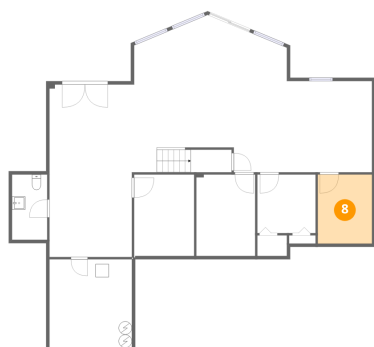
7 Floor 1 - Bath



Dimensions: 5'4" x 9'10"
Area: 52 sq. ft
Counted as living area: No

Heated: Yes
Finished: Yes
Enclosed: Yes
Contiguous: No
Permitted: Yes
Wet space: Yes
Addition: No
Conversion: No

8 Floor 1 - Room



Dimensions: 8'2" x 10'4"
Area: 85 sq. ft
Counted as living area: Yes

Heated: Yes
Finished: Yes
Enclosed: Yes
Contiguous: Yes
Permitted: Yes
Wet space: No
Addition: No
Conversion: No

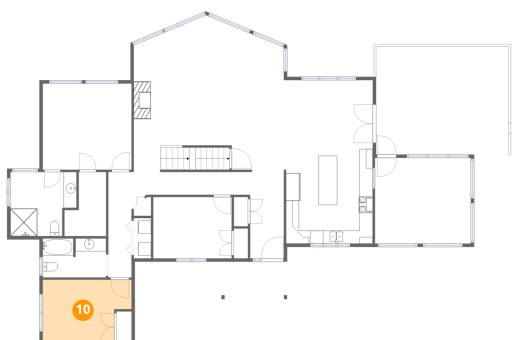
9 Floor 2 - Primary Bedroom



Dimensions: 13'7" x 13'3"
Area: 180 sq. ft
Counted as living area: Yes

Heated: Yes
Finished: Yes
Enclosed: Yes
Contiguous: Yes
Permitted: Yes
Wet space: No
Addition: No
Conversion: No

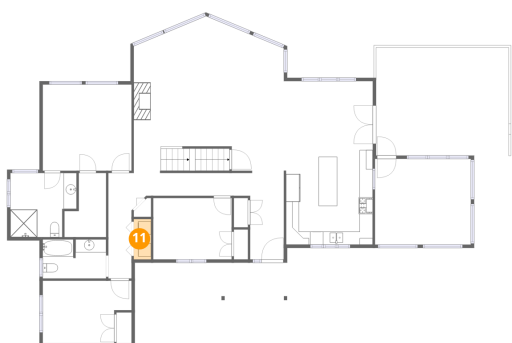
10 Floor 2 - Bedroom



Dimensions: 13'7" x 9'7"
Area: 117 sq. ft
Counted as living area: Yes

Heated: Yes
Finished: Yes
Enclosed: Yes
Contiguous: Yes
Permitted: Yes
Wet space: No
Addition: No
Conversion: No

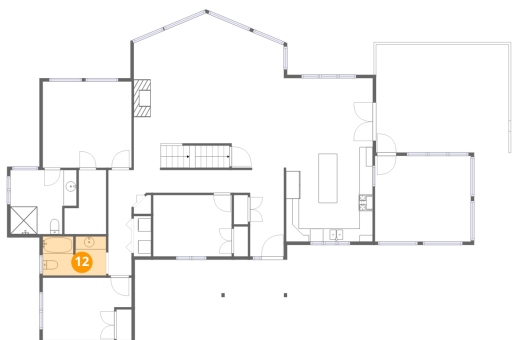
11 Floor 2 - Laundry



Dimensions: 2'8" x 6'2"
Area: 16 sq. ft
Counted as living area: Yes

Heated: Yes
Finished: Yes
Enclosed: Yes
Contiguous: Yes
Permitted: Yes
Wet space: No
Addition: No
Conversion: No

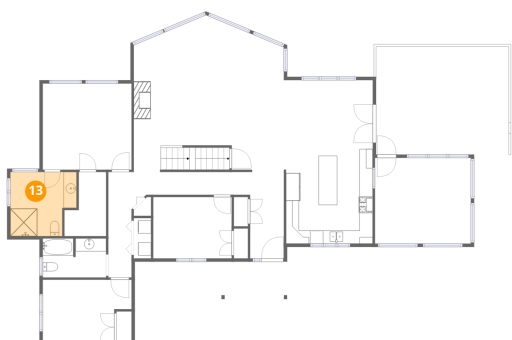
12 Floor 2 - Bath



Dimensions: 9'9" x 6'0"
Area: 57 sq. ft
Counted as living area: Yes

Heated: Yes
Finished: Yes
Enclosed: Yes
Contiguous: Yes
Permitted: Yes
Wet space: Yes
Addition: No
Conversion: No

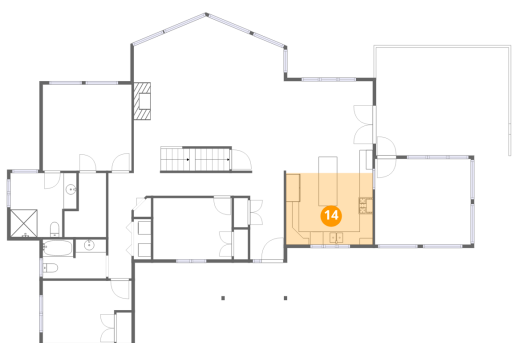
13 Floor 2 - Bath



Dimensions: 10'2" x 9'10"
Area: 90 sq. ft
Counted as living area: Yes

Heated: Yes
Finished: Yes
Enclosed: Yes
Contiguous: Yes
Permitted: Yes
Wet space: Yes
Addition: No
Conversion: No

14 Floor 2 - Kitchen



Dimensions: 13'4" x 11'0"
Area: 146 sq. ft
Counted as living area: Yes

Heated: Yes
Finished: Yes
Enclosed: Yes
Contiguous: Yes
Permitted: Yes
Wet space: No
Addition: No
Conversion: No

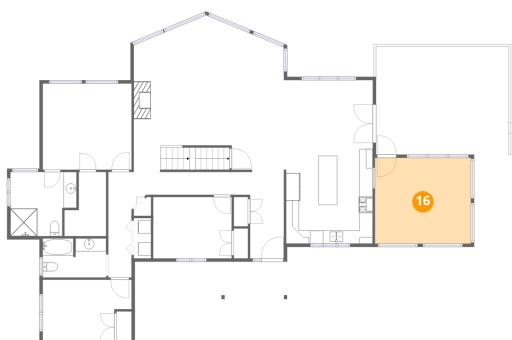
15 Floor 2 - W.I.C.



Dimensions: 6'4" x 9'10"
Area: 50 sq. ft
Counted as living area: Yes

Heated: Yes
Finished: Yes
Enclosed: Yes
Contiguous: Yes
Permitted: Yes
Wet space: No
Addition: No
Conversion: No

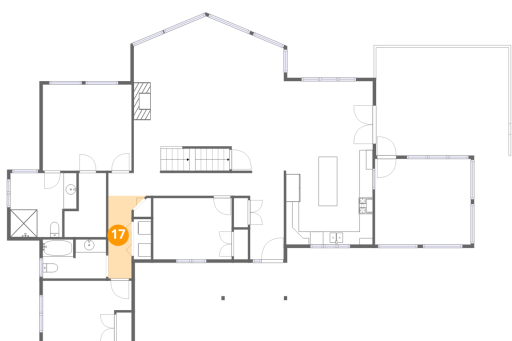
16 Floor 2 - Sun Room



Dimensions: 14'8" x 13'2"
Area: 193 sq. ft
Counted as living area: Yes

Heated: Yes
Finished: Yes
Enclosed: Yes
Contiguous: Yes
Permitted: Yes
Wet space: No
Addition: No
Conversion: No

17 Floor 2 - Hall



Dimensions: 3'7" x 12'8"
Area: 48 sq. ft
Counted as living area: Yes

Heated: Yes
Finished: Yes
Enclosed: Yes
Contiguous: Yes
Permitted: Yes
Wet space: No
Addition: No
Conversion: No

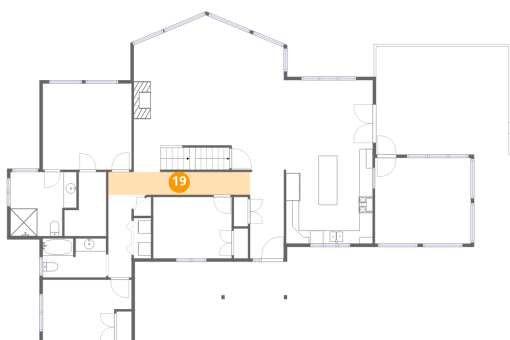
18 Floor 2 - Living Room



Dimensions: 23'0" x 21'6"
Area: 488 sq. ft
Counted as living area: Yes

Heated: Yes
Finished: Yes
Enclosed: Yes
Contiguous: Yes
Permitted: Yes
Wet space: No
Addition: No
Conversion: No

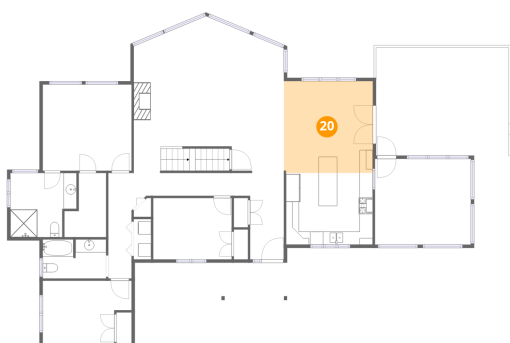
19 Floor 2 - Hall



Dimensions: 21'9" x 3'6"
Area: 76 sq. ft
Counted as living area: Yes

Heated: Yes
Finished: Yes
Enclosed: Yes
Contiguous: Yes
Permitted: Yes
Wet space: No
Addition: No
Conversion: No

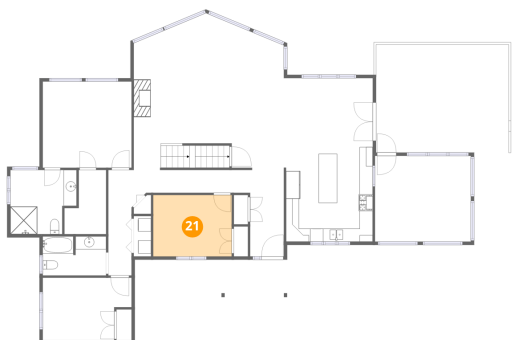
20 Floor 2 - Dining Area



Dimensions: 13'8" x 14'1"
Area: 192 sq. ft
Counted as living area: Yes

Heated: Yes
Finished: Yes
Enclosed: Yes
Contiguous: Yes
Permitted: Yes
Wet space: No
Addition: No
Conversion: No

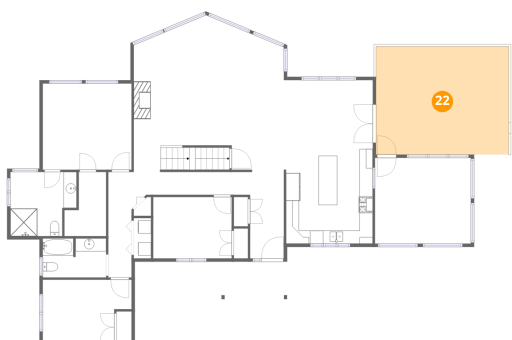
21 Floor 2 - Bedroom



Dimensions: 12'0" x 9'5"
Area: 113 sq. ft
Counted as living area: Yes

Heated: Yes
Finished: Yes
Enclosed: Yes
Contiguous: Yes
Permitted: Yes
Wet space: No
Addition: No
Conversion: No

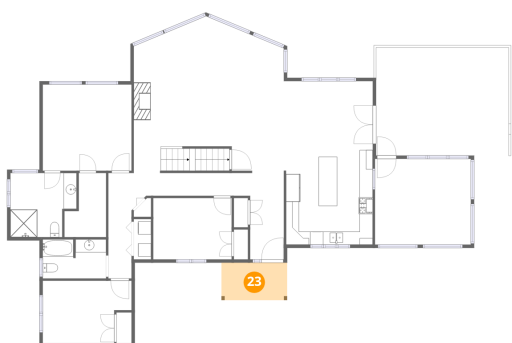
22 Floor 2 - Deck



Dimensions: 20'4" x 16'6"
Area: 337 sq. ft
Counted as living area: No

Heated: No
Finished: No
Enclosed: No
Contiguous: Yes
Permitted: Yes
Wet space: No
Addition: No
Conversion: No

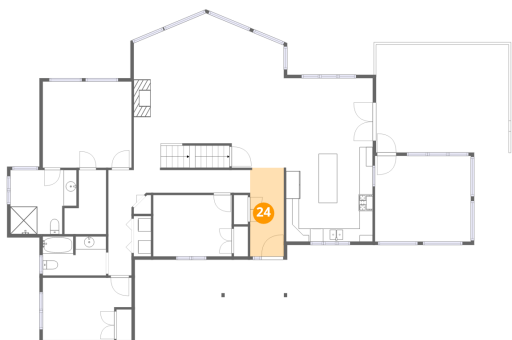
23 Floor 2 - Porch



Dimensions: 10'1" x 5'9"
Area: 58 sq. ft
Counted as living area: No

Heated: No
Finished: No
Enclosed: No
Contiguous: Yes
Permitted: Yes
Wet space: No
Addition: No
Conversion: No

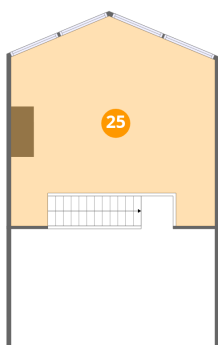
24 Floor 2 - Foyer



Dimensions: 5'2" x 13'7"
Area: 70 sq. ft
Counted as living area: Yes

Heated: Yes
Finished: Yes
Enclosed: Yes
Contiguous: Yes
Permitted: Yes
Wet space: No
Addition: No
Conversion: No

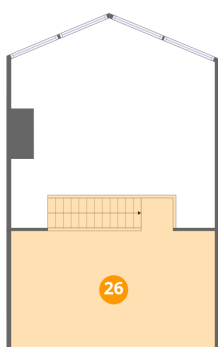
25 Floor 3 - Open To Below



Dimensions: 23'0" x 19'10"
Area: 436 sq. ft
Counted as living area: No

Heated: No
Finished: No
Enclosed: No
Contiguous: Yes
Permitted: No
Wet space: No
Addition: No
Conversion: No

26 Floor 3 - Family Room



Dimensions: 23'0" x 17'0"
Area: 364 sq. ft
Counted as living area: Yes

Heated: Yes
Finished: Yes
Enclosed: Yes
Contiguous: Yes
Permitted: Yes
Wet space: No
Addition: No
Conversion: No