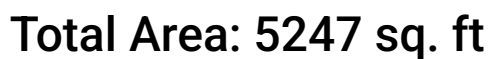


934 Commander Drive Northwest, Captains Grove, Hollins,
Roanoke, Roanoke County, Virginia, United States, 24012, Lower




Excluded: Storage 203 sq. ft, Garage 518 sq. ft, Utility 158 sq. ft, Workshop 318 sq. ft, Fireplace 27 sq. ft, Walls: 330 sq. ft

Property summary



Home data report

934 Commander Drive Northwest, Captains Grove, Hollins,
Roanoke, Roanoke County, Virginia, United States, 24012, Lower

 **6**
Half baths

 **1**
Garages

Home data report

934 Commander Drive Northwest, Captains Grove, Hollins,
Roanoke, Roanoke County, Virginia, United States, 24012, Lower



Room dimensions

Floor 1 Total:1669sqft Excluded: 1203sqft

#		Dimensions	sqft	Counted as living area
1	Bath	5'0" x 4'5"	22 sq. ft	Yes
2	Family Room	19'0" x 23'5"	450 sq. ft	Yes
3	Laundry	9'2" x 22'9"	193 sq. ft	Yes
4	Wet Bar	12'11" x 24'4"	281 sq. ft	Yes
5	Hall	26'3" x 4'9"	124 sq. ft	Yes
6	Bath	7'7" x 3'6"	26 sq. ft	Yes
7	Storage	17'10" x 11'1"	197 sq. ft	No
8	Bath	5'0" x 6'7"	33 sq. ft	Yes
9	Garage	22'9" x 22'9"	518 sq. ft	No
10	Bath	18'5" x 10'9"	186 sq. ft	Yes
11	Utility	11'5" x 13'10"	157 sq. ft	No

Home data report

934 Commander Drive Northwest, Captains Grove, Hollins,
Roanoke, Roanoke County, Virginia, United States, 24012, Lower

#		Dimensions	sqft	Counted as living area
12	Hall	4'1" x 13'4"	54 sq. ft	Yes
13	Workshop	17'10" x 17'9"	318 sq. ft	No
14	Bath	7'7" x 10'4"	66 sq. ft	Yes

Home data report

934 Commander Drive Northwest, Captains Grove, Hollins,
Roanoke, Roanoke County, Virginia, United States, 24012, Lower



Room dimensions

Floor 2 Total:3578sqft Excluded: 21sqft

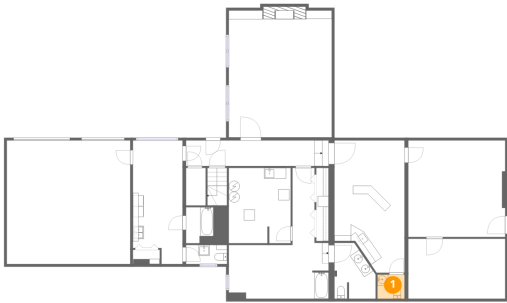
#		Dimensions	sqft	Counted as living area
15	Bedroom	19'0" x 16'9"	318 sq. ft	Yes
16	Foyer	12'11" x 24'1"	291 sq. ft	Yes
17	Hall	3'5" x 6'6"	22 sq. ft	Yes
18	Office	17'10" x 20'0"	352 sq. ft	Yes
19	Living Room	29'2" x 19'3"	579 sq. ft	Yes
20	Bath	7'10" x 6'6"	51 sq. ft	Yes
21	Hall	24'3" x 4'9"	115 sq. ft	Yes
22	Dining Room	18'5" x 26'4"	461 sq. ft	Yes
23	Eat-in Kitchen	21'3" x 22'9"	388 sq. ft	Yes
24	Bath	4'6" x 6'6"	29 sq. ft	Yes
25	Hall	15'8" x 12'0"	129 sq. ft	Yes

Home data report

934 Commander Drive Northwest, Captains Grove, Hollins,
Roanoke, Roanoke County, Virginia, United States, 24012, Lower

#		Dimensions	sqft	Counted as living area
26	Hall	21'1" x 13'3"	243 sq. ft	Yes
27	Sun Room	10'6" x 24'3"	245 sq. ft	Yes
28	Butlers Pantry	14'4" x 10'5"	150 sq. ft	Yes
29	Bath	2'6" x 5'3"	13 sq. ft	Yes

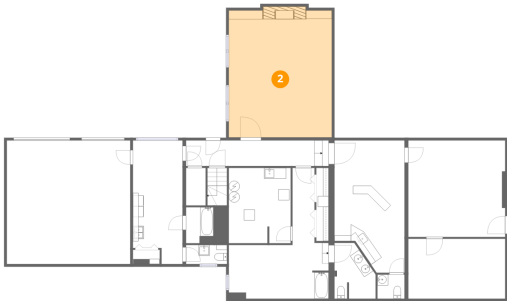
1 Floor 1 - Bath



Dimensions: 5'0" x 4'5"
Area: 22 sq. ft
Counted as living area: Yes

Heated: Yes
Finished: Yes
Enclosed: Yes
Contiguous: Yes
Permitted: Yes
Wet space: Yes
Addition: No
Conversion: No

2 Floor 1 - Family Room

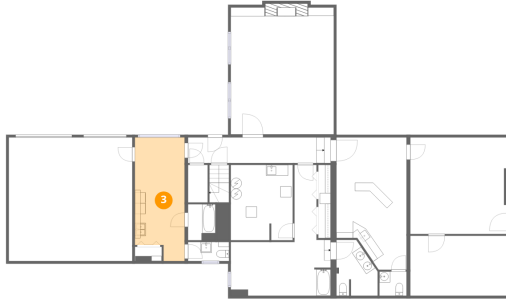


Dimensions: 19'0" x 23'5"
Area: 450 sq. ft
Counted as living area: Yes

Heated: Yes
Finished: Yes
Enclosed: Yes
Contiguous: Yes
Permitted: Yes
Wet space: No
Addition: No
Conversion: No

934 Commander Drive Northwest, Captains Grove, Hollins,
Roanoke, Roanoke County, Virginia, United States, 24012, Lower

3 Floor 1 - Laundry



Dimensions: 9'2" x 22'9"
Area: 193 sq. ft
Counted as living area: Yes

Heated: Yes
Finished: Yes
Enclosed: Yes
Contiguous: Yes
Permitted: Yes
Wet space: No
Addition: No
Conversion: No

4 Floor 1 - Wet Bar



Dimensions: 12'11" x 24'4"
Area: 281 sq. ft
Counted as living area: Yes

Heated: Yes
Finished: Yes
Enclosed: Yes
Contiguous: Yes
Permitted: Yes
Wet space: No
Addition: No
Conversion: No

5 Floor 1 - Hall



Dimensions: 26'3" x 4'9"
Area: 124 sq. ft
Counted as living area: Yes

Heated: Yes
Finished: Yes
Enclosed: Yes
Contiguous: Yes
Permitted: Yes
Wet space: No
Addition: No
Conversion: No

934 Commander Drive Northwest, Captains Grove, Hollins,
Roanoke, Roanoke County, Virginia, United States, 24012, Lower

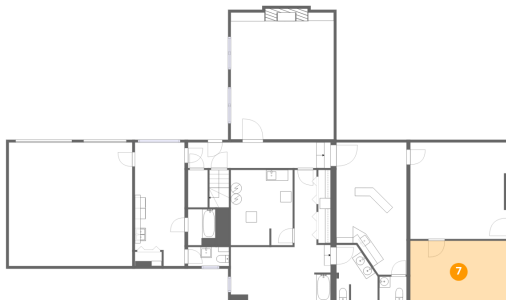
6 Floor 1 - Bath



Dimensions: 7'7" x 3'6"
Area: 26 sq. ft
Counted as living area: Yes

Heated: Yes
Finished: Yes
Enclosed: Yes
Contiguous: Yes
Permitted: Yes
Wet space: Yes
Addition: No
Conversion: No

7 Floor 1 - Storage



Dimensions: 17'10" x 11'1"
Area: 197 sq. ft
Counted as living area: No

Heated: No
Finished: Yes
Enclosed: No
Contiguous: Yes
Permitted: Yes
Wet space: No
Addition: No
Conversion: No

8 Floor 1 - Bath



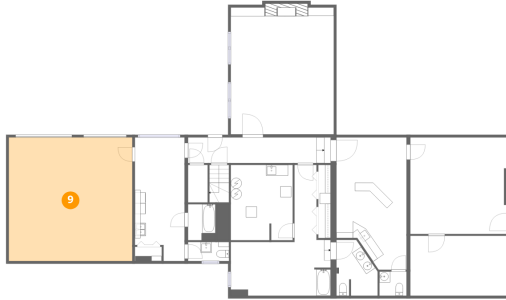
Dimensions: 5'0" x 6'7"
Area: 33 sq. ft
Counted as living area: Yes

Heated: Yes
Finished: Yes
Enclosed: Yes
Contiguous: Yes
Permitted: Yes
Wet space: Yes
Addition: No
Conversion: No

Home data report

934 Commander Drive Northwest, Captains Grove, Hollins,
Roanoke, Roanoke County, Virginia, United States, 24012, Lower

9 Floor 1 - Garage



Dimensions: 22'9" x 22'9"
Area: 518 sq. ft
Counted as living area: No

Heated: No
Finished: No
Enclosed: Yes
Contiguous: Yes
Permitted: Yes
Wet space: No
Addition: No
Conversion: No

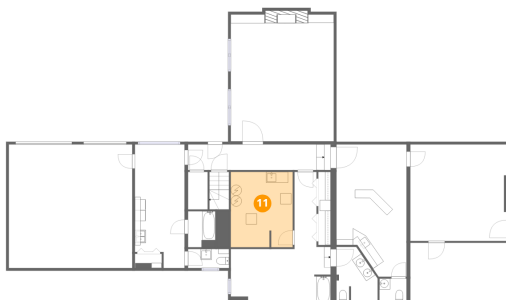
10 Floor 1 - Bath



Dimensions: 18'5" x 10'9"
Area: 186 sq. ft
Counted as living area: Yes

Heated: Yes
Finished: Yes
Enclosed: Yes
Contiguous: Yes
Permitted: Yes
Wet space: Yes
Addition: No
Conversion: No

11 Floor 1 - Utility



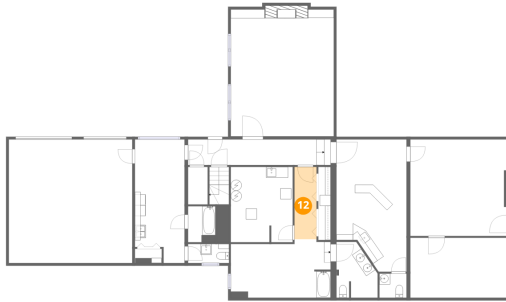
Dimensions: 11'5" x 13'10"
Area: 157 sq. ft
Counted as living area: No

Heated: Yes
Finished: No
Enclosed: Yes
Contiguous: Yes
Permitted: Yes
Wet space: No
Addition: No
Conversion: No

Home data report

934 Commander Drive Northwest, Captains Grove, Hollins,
Roanoke, Roanoke County, Virginia, United States, 24012, Lower

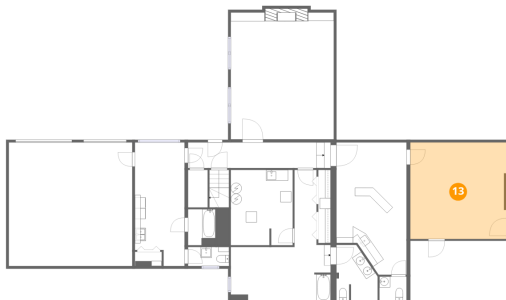
12 Floor 1 - Hall



Dimensions: 4'1" x 13'4"
Area: 54 sq. ft
Counted as living area: Yes

Heated: Yes
Finished: Yes
Enclosed: Yes
Contiguous: Yes
Permitted: Yes
Wet space: No
Addition: No
Conversion: No

13 Floor 1 - Workshop



Dimensions: 17'10" x 17'9"
Area: 318 sq. ft
Counted as living area: No

Heated: No
Finished: No
Enclosed: Yes
Contiguous: No
Permitted: Yes
Wet space: No
Addition: No
Conversion: No

14 Floor 1 - Bath

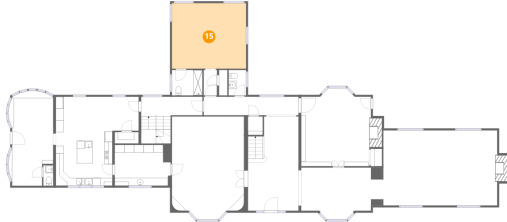


Dimensions: 7'7" x 10'4"
Area: 66 sq. ft
Counted as living area: Yes

Heated: Yes
Finished: Yes
Enclosed: Yes
Contiguous: Yes
Permitted: Yes
Wet space: Yes
Addition: No
Conversion: No

**934 Commander Drive Northwest, Captains Grove, Hollins,
Roanoke, Roanoke County, Virginia, United States, 24012, Lower**

15 Floor 2 - Bedroom



Dimensions: 19'0" x 16'9"
Area: 318 sq. ft
Counted as living area: Yes

Heated: Yes
Finished: Yes
Enclosed: Yes
Contiguous: Yes
Permitted: Yes
Wet space: No
Addition: No
Conversion: No

16 Floor 2 - Foyer



Dimensions: 12'11" x 24'1"
Area: 291 sq. ft
Counted as living area: Yes

Heated: Yes
Finished: Yes
Enclosed: Yes
Contiguous: Yes
Permitted: Yes
Wet space: No
Addition: No
Conversion: No

17 Floor 2 - Hall



Dimensions: 3'5" x 6'6"
Area: 22 sq. ft
Counted as living area: Yes

Heated: Yes
Finished: Yes
Enclosed: Yes
Contiguous: Yes
Permitted: Yes
Wet space: No
Addition: No
Conversion: No

934 Commander Drive Northwest, Captains Grove, Hollins,
Roanoke, Roanoke County, Virginia, United States, 24012, Lower

18 Floor 2 - Office



Dimensions: 17'10" x 20'0"
Area: 352 sq. ft
Counted as living area: Yes

Heated: Yes
Finished: Yes
Enclosed: Yes
Contiguous: Yes
Permitted: Yes
Wet space: No
Addition: No
Conversion: No

19 Floor 2 - Living Room



Dimensions: 29'2" x 19'3"
Area: 579 sq. ft
Counted as living area: Yes

Heated: Yes
Finished: Yes
Enclosed: Yes
Contiguous: Yes
Permitted: Yes
Wet space: No
Addition: No
Conversion: No

20 Floor 2 - Bath



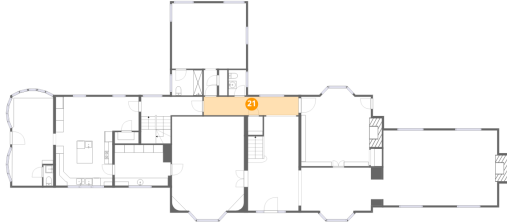
Dimensions: 7'10" x 6'6"
Area: 51 sq. ft
Counted as living area: Yes

Heated: Yes
Finished: Yes
Enclosed: Yes
Contiguous: Yes
Permitted: Yes
Wet space: Yes
Addition: No
Conversion: No

Home data report

934 Commander Drive Northwest, Captains Grove, Hollins,
Roanoke, Roanoke County, Virginia, United States, 24012, Lower

21 Floor 2 - Hall



Dimensions: 24'3" x 4'9"
Area: 115 sq. ft
Counted as living area: Yes

Heated: Yes
Finished: Yes
Enclosed: Yes
Contiguous: Yes
Permitted: Yes
Wet space: No
Addition: No
Conversion: No

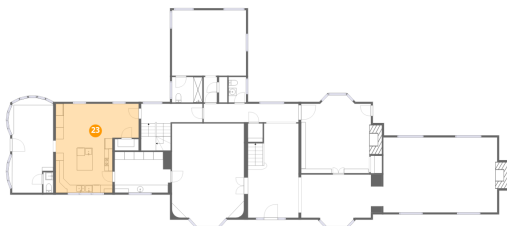
22 Floor 2 - Dining Room



Dimensions: 18'5" x 26'4"
Area: 461 sq. ft
Counted as living area: Yes

Heated: Yes
Finished: Yes
Enclosed: Yes
Contiguous: Yes
Permitted: Yes
Wet space: No
Addition: No
Conversion: No

23 Floor 2 - Eat-in Kitchen



Dimensions: 21'3" x 22'9"
Area: 388 sq. ft
Counted as living area: Yes

Heated: Yes
Finished: Yes
Enclosed: Yes
Contiguous: Yes
Permitted: Yes
Wet space: No
Addition: No
Conversion: No

934 Commander Drive Northwest, Captains Grove, Hollins,
Roanoke, Roanoke County, Virginia, United States, 24012, Lower

24 Floor 2 - Bath



Dimensions: 4'6" x 6'6"
Area: 29 sq. ft
Counted as living area: Yes

Heated: Yes
Finished: Yes
Enclosed: Yes
Contiguous: Yes
Permitted: Yes
Wet space: No
Addition: No
Conversion: No

25 Floor 2 - Hall



Dimensions: 15'8" x 12'0"
Area: 129 sq. ft
Counted as living area: Yes

Heated: Yes
Finished: Yes
Enclosed: Yes
Contiguous: Yes
Permitted: Yes
Wet space: No
Addition: No
Conversion: No

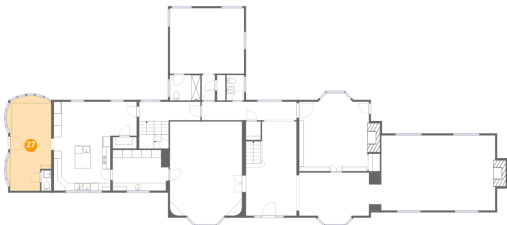
26 Floor 2 - Hall



Dimensions: 21'1" x 13'3"
Area: 243 sq. ft
Counted as living area: Yes

Heated: Yes
Finished: Yes
Enclosed: Yes
Contiguous: Yes
Permitted: Yes
Wet space: No
Addition: No
Conversion: No

27 Floor 2 - Sun Room



Dimensions: 10'6" x 24'3"
Area: 245 sq. ft
Counted as living area: Yes

Heated: Yes
Finished: Yes
Enclosed: Yes
Contiguous: Yes
Permitted: Yes
Wet space: No
Addition: No
Conversion: No

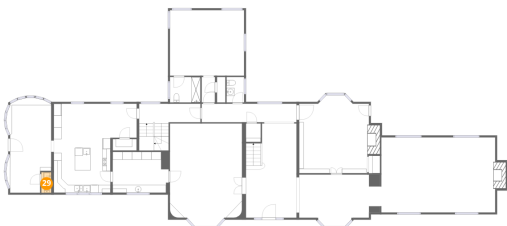
28 Floor 2 - Butlers Pantry



Dimensions: 14'4" x 10'5"
Area: 150 sq. ft
Counted as living area: Yes

Heated: Yes
Finished: Yes
Enclosed: Yes
Contiguous: Yes
Permitted: Yes
Wet space: No
Addition: No
Conversion: No

29 Floor 2 - Bath



Dimensions: 2'6" x 5'3"
Area: 13 sq. ft
Counted as living area: Yes

Heated: Yes
Finished: Yes
Enclosed: Yes
Contiguous: Yes
Permitted: Yes
Wet space: Yes
Addition: No
Conversion: No