

Home data report

703 South Tundra Flower Lane, Palmer, Matanuska-Susitna Borough, Alaska, United States, 99645



Total Area: 2485 sq. ft

Basement: 735 sq. ft, 1st Floor: 1221 sq. ft, 2nd Floor: 529 sq. ft

Excluded: Crawl space 210 sq. ft, Utility 85 sq. ft, Garage 2471 sq. ft, Storage 52 sq. ft, Porch 42 sq. ft, Deck 30 sq. ft, Walls: 341 sq. ft

Property summary

 **3** Floors

 **3** Bedrooms

 **2** Bathrooms

Home data report

**703 South Tundra Flower Lane, Palmer, Matanuska-Susitna
Borough, Alaska, United States, 99645**

 **1**
Half baths

 **2**
Garages

Home data report

703 South Tundra Flower Lane, Palmer, Matanuska-Susitna Borough, Alaska, United States, 99645



Room dimensions

Floor 1 Below grade

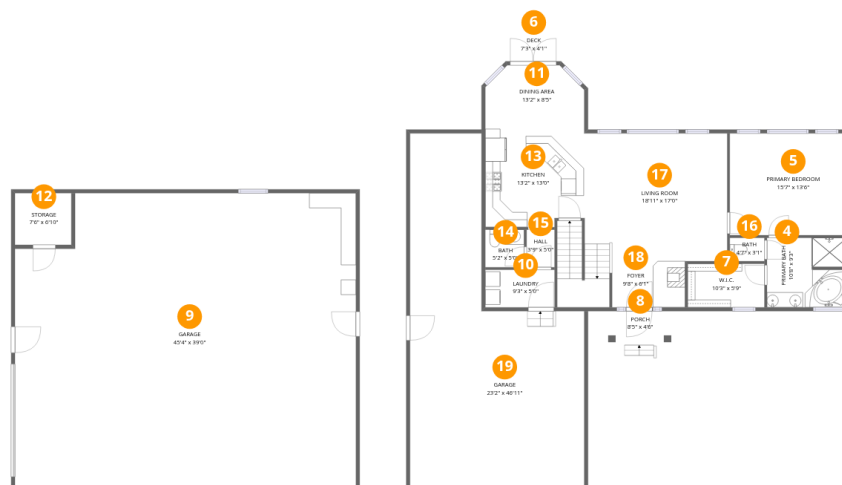
Total:735sqft

Excluded: 295sqft

#		Dimensions	sqft	Counted as living area
1	Crawl Space	9'3" x 22'0"	202 sq. ft	No
2	Utility	5'10" x 22'0"	128 sq. ft	No
3	Recreation Room	34'11" x 21'1"	736 sq. ft	Yes

Home data report

703 South Tundra Flower Lane, Palmer, Matanuska-Susitna Borough, Alaska, United States, 99645



Room dimensions

Floor 2

Total:1221sqft

Excluded: 2595sqft

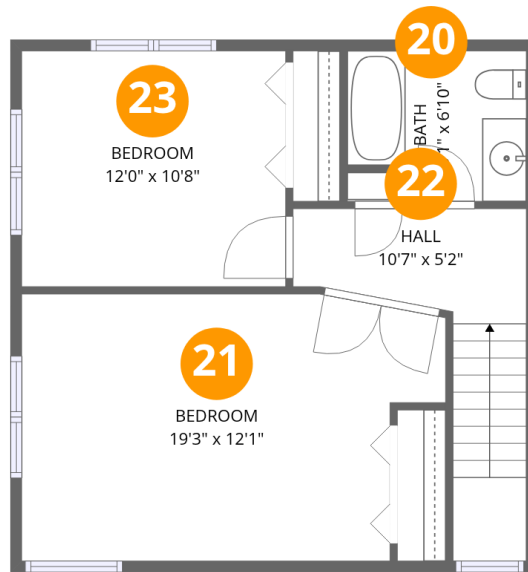
#		Dimensions	sqft	Counted as living area
4	Primary Bath	10'8" x 9'3"	98 sq. ft	Yes
5	Primary Bedroom	15'7" x 13'6"	211 sq. ft	Yes
6	Deck	7'3" x 4'1"	30 sq. ft	No
7	W.I.C.	10'3" x 5'9"	59 sq. ft	Yes
8	Porch	8'5" x 4'6"	38 sq. ft	No
9	Garage	45'4" x 39'0"	1766 sq. ft	No
10	Laundry	9'3" x 5'0"	46 sq. ft	Yes
11	Dining Area	13'2" x 8'5"	111 sq. ft	Yes
12	Storage	7'6" x 6'10"	51 sq. ft	No
13	Kitchen	13'2" x 13'0"	172 sq. ft	Yes
14	Bath	5'2" x 5'0"	26 sq. ft	Yes

Home data report

**703 South Tundra Flower Lane, Palmer, Matanuska-Susitna
Borough, Alaska, United States, 99645**

#		Dimensions	sqft	Counted as living area
15	Hall	3'9" x 5'0"	19 sq. ft	Yes
16	Bath	4'7" x 3'1"	14 sq. ft	Yes
17	Living Room	18'11" x 17'0"	322 sq. ft	Yes
18	Foyer	9'8" x 6'1"	59 sq. ft	Yes
19	Garage	23'2" x 46'11"	1085 sq. ft	No

703 South Tundra Flower Lane, Palmer, Matanuska-Susitna Borough, Alaska, United States, 99645



Room dimensions

Floor 3

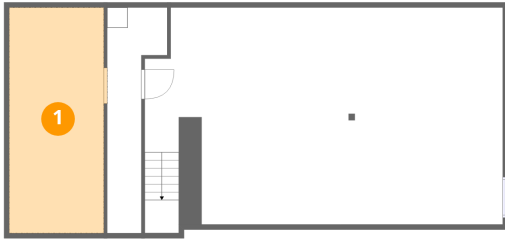
Total:529sqft

Excluded: 0sqft

#		Dimensions	sqft	Counted as living area
20	Bath	8'1" x 6'10"	55 sq. ft	Yes
21	Bedroom	19'3" x 12'1"	232 sq. ft	Yes
22	Hall	10'7" x 5'2"	55 sq. ft	Yes
23	Bedroom	12'0" x 10'8"	128 sq. ft	Yes

703 South Tundra Flower Lane, Palmer, Matanuska-Susitna
Borough, Alaska, United States, 99645

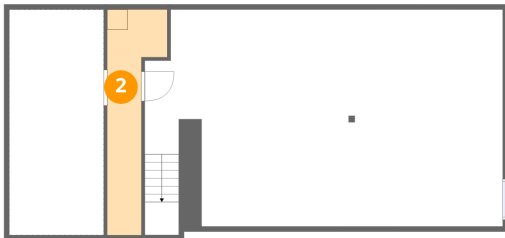
1 Floor 1 - Crawl Space



Dimensions: 9'3" x 22'0"
Area: 202 sq. ft
Counted as living area: No

Heated: No
Finished: No
Enclosed: No
Contiguous: Yes
Permitted: No
Wet space: No
Addition: No
Conversion: No

2 Floor 1 - Utility

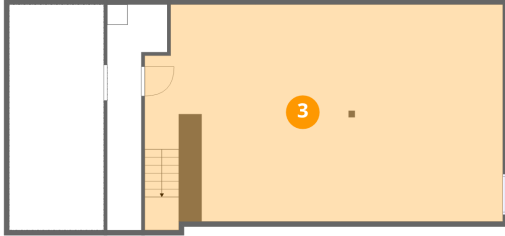


Dimensions: 5'10" x 22'0"
Area: 128 sq. ft
Counted as living area: No

Heated: Yes
Finished: No
Enclosed: Yes
Contiguous: Yes
Permitted: Yes
Wet space: No
Addition: No
Conversion: No

703 South Tundra Flower Lane, Palmer, Matanuska-Susitna
Borough, Alaska, United States, 99645

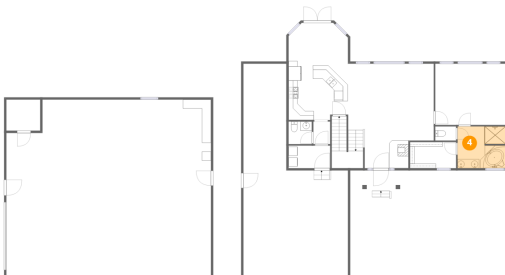
3 Floor 1 - Recreation Room



Dimensions: 34'11" x 21'1"
Area: 736 sq. ft
Counted as living area: Yes

Heated: Yes
Finished: Yes
Enclosed: Yes
Contiguous: Yes
Permitted: Yes
Wet space: No
Addition: No
Conversion: No

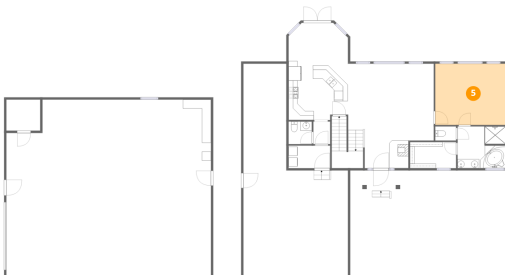
4 Floor 2 - Primary Bath



Dimensions: 10'8" x 9'3"
Area: 98 sq. ft
Counted as living area: Yes

Heated: Yes
Finished: Yes
Enclosed: Yes
Contiguous: Yes
Permitted: Yes
Wet space: Yes
Addition: No
Conversion: No

5 Floor 2 - Primary Bedroom

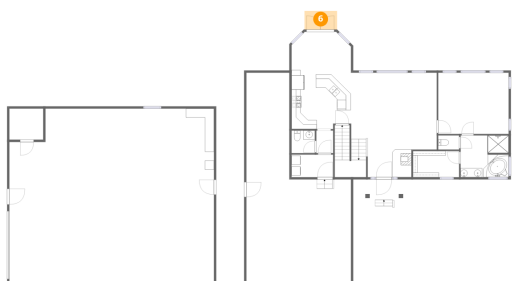


Dimensions: 15'7" x 13'6"
Area: 211 sq. ft
Counted as living area: Yes

Heated: Yes
Finished: Yes
Enclosed: Yes
Contiguous: Yes
Permitted: Yes
Wet space: No
Addition: No
Conversion: No

703 South Tundra Flower Lane, Palmer, Matanuska-Susitna
Borough, Alaska, United States, 99645

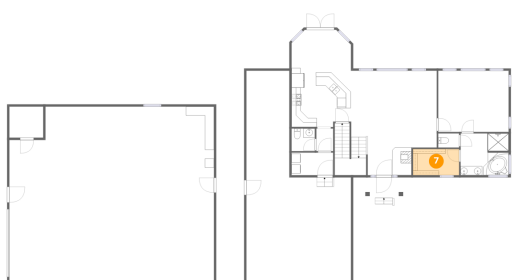
6 Floor 2 - Deck



Dimensions: 7'3" x 4'1"
Area: 30 sq. ft
Counted as living area: No

Heated: No
Finished: No
Enclosed: No
Contiguous: Yes
Permitted: Yes
Wet space: No
Addition: No
Conversion: No

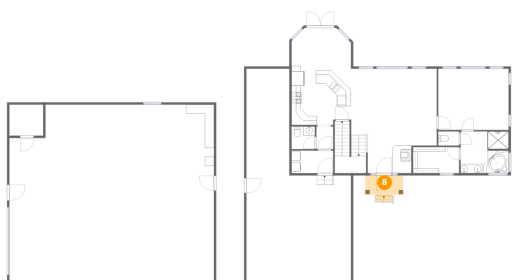
7 Floor 2 - W.I.C.



Dimensions: 10'3" x 5'9"
Area: 59 sq. ft
Counted as living area: Yes

Heated: Yes
Finished: Yes
Enclosed: Yes
Contiguous: Yes
Permitted: Yes
Wet space: No
Addition: No
Conversion: No

8 Floor 2 - Porch

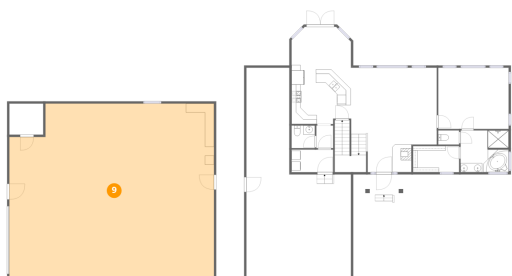


Dimensions: 8'5" x 4'6"
Area: 38 sq. ft
Counted as living area: No

Heated: No
Finished: No
Enclosed: No
Contiguous: Yes
Permitted: Yes
Wet space: No
Addition: No
Conversion: No

703 South Tundra Flower Lane, Palmer, Matanuska-Susitna
Borough, Alaska, United States, 99645

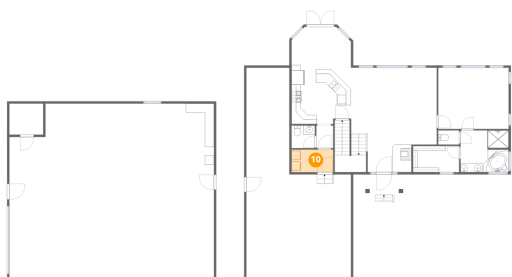
9 Floor 2 - Garage



Dimensions: 45'4" x 39'0"
Area: 1766 sq. ft
Counted as living area: No

Heated: No
Finished: No
Enclosed: Yes
Contiguous: Yes
Permitted: Yes
Wet space: No
Addition: No
Conversion: No

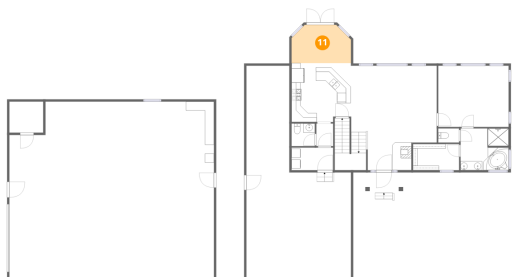
10 Floor 2 - Laundry



Dimensions: 9'3" x 5'0"
Area: 46 sq. ft
Counted as living area: Yes

Heated: Yes
Finished: Yes
Enclosed: Yes
Contiguous: Yes
Permitted: Yes
Wet space: No
Addition: No
Conversion: No

11 Floor 2 - Dining Area

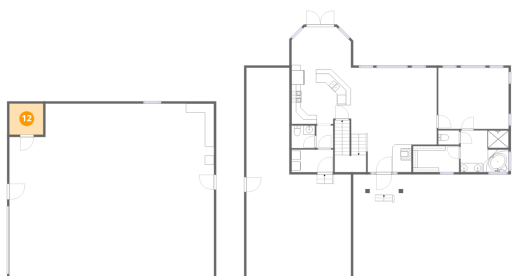


Dimensions: 13'2" x 8'5"
Area: 111 sq. ft
Counted as living area: Yes

Heated: Yes
Finished: Yes
Enclosed: Yes
Contiguous: Yes
Permitted: Yes
Wet space: No
Addition: No
Conversion: No

703 South Tundra Flower Lane, Palmer, Matanuska-Susitna
Borough, Alaska, United States, 99645

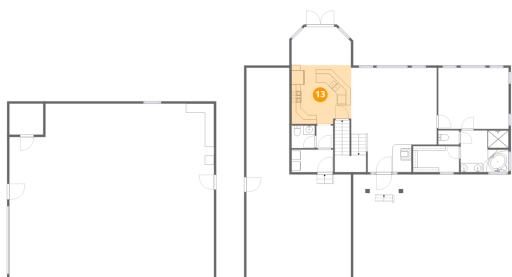
12 Floor 2 - Storage



Dimensions: 7'6" x 6'10"
Area: 51 sq. ft
Counted as living area: No

Heated: No
Finished: No
Enclosed: No
Contiguous: Yes
Permitted: Yes
Wet space: No
Addition: No
Conversion: No

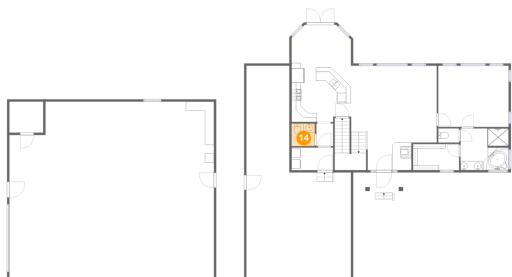
13 Floor 2 - Kitchen



Dimensions: 13'2" x 13'0"
Area: 172 sq. ft
Counted as living area: Yes

Heated: Yes
Finished: Yes
Enclosed: Yes
Contiguous: Yes
Permitted: Yes
Wet space: No
Addition: No
Conversion: No

14 Floor 2 - Bath

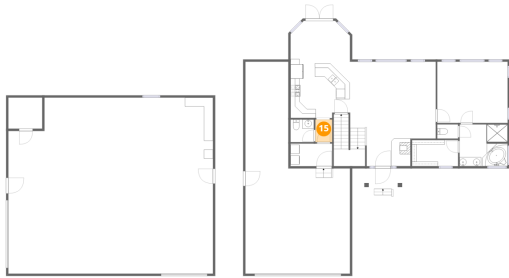


Dimensions: 5'2" x 5'0"
Area: 26 sq. ft
Counted as living area: Yes

Heated: Yes
Finished: Yes
Enclosed: Yes
Contiguous: Yes
Permitted: Yes
Wet space: Yes
Addition: No
Conversion: No

703 South Tundra Flower Lane, Palmer, Matanuska-Susitna
Borough, Alaska, United States, 99645

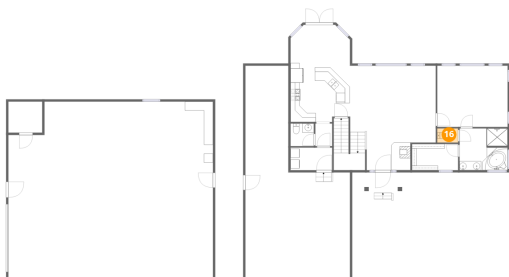
15 Floor 2 - Hall



Dimensions: 3'9" x 5'0"
Area: 19 sq. ft
Counted as living area: Yes

Heated: Yes
Finished: Yes
Enclosed: Yes
Contiguous: Yes
Permitted: Yes
Wet space: No
Addition: No
Conversion: No

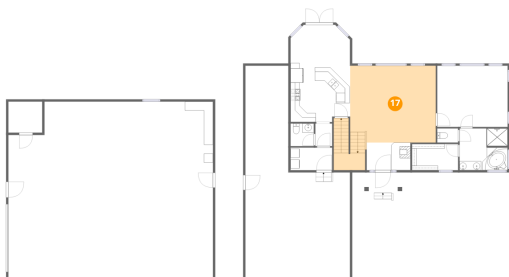
16 Floor 2 - Bath



Dimensions: 4'7" x 3'1"
Area: 14 sq. ft
Counted as living area: Yes

Heated: Yes
Finished: Yes
Enclosed: Yes
Contiguous: Yes
Permitted: Yes
Wet space: No
Addition: No
Conversion: No

17 Floor 2 - Living Room



Dimensions: 18'11" x 17'0"
Area: 322 sq. ft
Counted as living area: Yes

Heated: Yes
Finished: Yes
Enclosed: Yes
Contiguous: Yes
Permitted: Yes
Wet space: No
Addition: No
Conversion: No

703 South Tundra Flower Lane, Palmer, Matanuska-Susitna
Borough, Alaska, United States, 99645

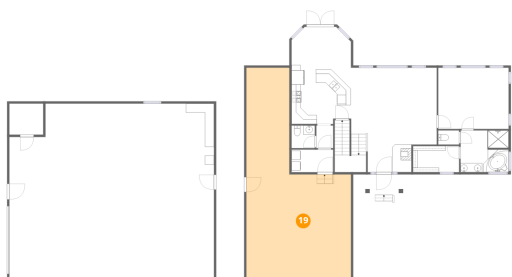
18 Floor 2 - Foyer



Dimensions: 9'8" x 6'1"
Area: 59 sq. ft
Counted as living area: Yes

Heated: Yes
Finished: Yes
Enclosed: Yes
Contiguous: Yes
Permitted: Yes
Wet space: No
Addition: No
Conversion: No

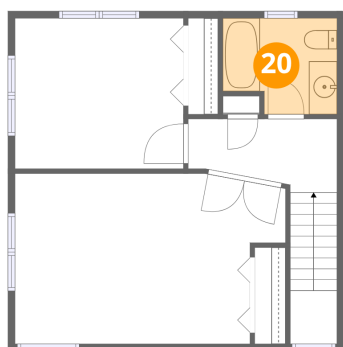
19 Floor 2 - Garage



Dimensions: 23'2" x 46'11"
Area: 1085 sq. ft
Counted as living area: No

Heated: No
Finished: No
Enclosed: Yes
Contiguous: Yes
Permitted: Yes
Wet space: No
Addition: No
Conversion: No

20 Floor 3 - Bath



Dimensions: 8'1" x 6'10"
Area: 55 sq. ft
Counted as living area: Yes

Heated: Yes
Finished: Yes
Enclosed: Yes
Contiguous: Yes
Permitted: Yes
Wet space: Yes
Addition: No
Conversion: No

703 South Tundra Flower Lane, Palmer, Matanuska-Susitna
Borough, Alaska, United States, 99645

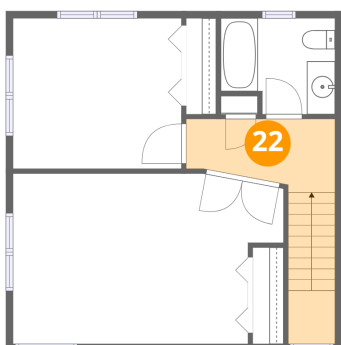
21 Floor 3 - Bedroom



Dimensions: 19'3" x 12'1"
Area: 232 sq. ft
Counted as living area: Yes

Heated: Yes
Finished: Yes
Enclosed: Yes
Contiguous: Yes
Permitted: Yes
Wet space: No
Addition: No
Conversion: No

22 Floor 3 - Hall



Dimensions: 10'7" x 5'2"
Area: 55 sq. ft
Counted as living area: Yes

Heated: Yes
Finished: Yes
Enclosed: Yes
Contiguous: Yes
Permitted: Yes
Wet space: No
Addition: No
Conversion: No

23 Floor 3 - Bedroom



Dimensions: 12'0" x 10'8"
Area: 128 sq. ft
Counted as living area: Yes

Heated: Yes
Finished: Yes
Enclosed: Yes
Contiguous: Yes
Permitted: Yes
Wet space: No
Addition: No
Conversion: No