

Home data report

117 Aird Court, Milton, Halton County, Ontario, Canada, L9T 8B6



Total Area: 1883 sq. ft

Basement: 467 sq. ft, 1st Floor: 640 sq. ft, 2nd Floor: 776 sq. ft

Excluded: Utility 170 sq. ft, Open to below 24 sq. ft, Walls: 144 sq. ft

Property summary

3 Floors

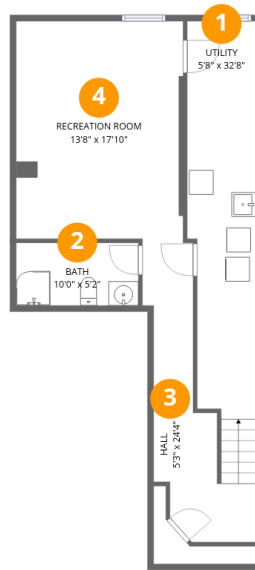
3 Bedrooms

3 Bathrooms

1 Half baths

Home data report

117 Aird Court, Milton, Halton County, Ontario, Canada, L9T 8B6



Room dimensions

Floor 1 Below grade

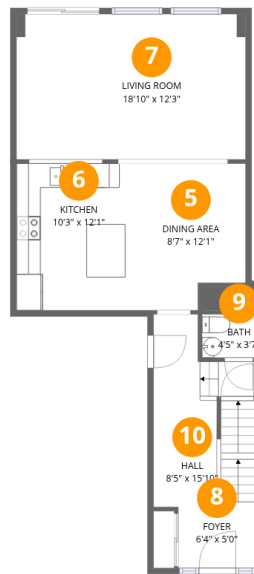
Total:467sqft

Excluded: 170sqft

#		Dimensions	sqft	Counted as living area
1	Utility	5'8" x 32'8"	184 sq. ft	No
2	Bath	10'0" x 5'2"	52 sq. ft	Yes
3	Hall	5'3" x 24'4"	127 sq. ft	Yes
4	Recreation Room	13'8" x 17'10"	245 sq. ft	Yes

Home data report

117 Aird Court, Milton, Halton County, Ontario, Canada, L9T 8B6



Room dimensions

Floor 2

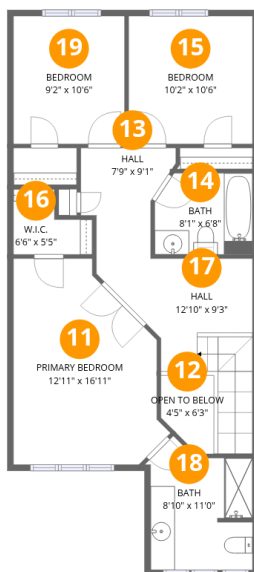
Total:640sqft

Excluded: 0sqft

#		Dimensions	sqft	Counted as living area
5	Dining Area	8'7" x 12'1"	103 sq. ft	Yes
6	Kitchen	10'3" x 12'1"	124 sq. ft	Yes
7	Living Room	18'10" x 12'3"	231 sq. ft	Yes
8	Foyer	6'4" x 5'0"	32 sq. ft	Yes
9	Bath	4'5" x 3'7"	16 sq. ft	Yes
10	Hall	8'5" x 15'10"	133 sq. ft	Yes

Home data report

117 Aird Court, Milton, Halton County, Ontario, Canada, L9T 8B6



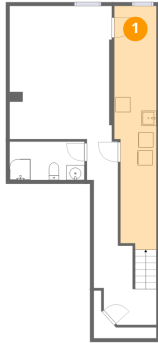
Room dimensions

Floor 3

Total:776sqft Excluded: 24sqft

#		Dimensions	sqft	Counted as living area
11	Primary Bedroom	12'11" x 16'11"	219 sq. ft	Yes
12	Open To Below	4'5" x 6'3"	27 sq. ft	No
13	Hall	7'9" x 9'1"	71 sq. ft	Yes
14	Bath	8'1" x 6'8"	54 sq. ft	Yes
15	Bedroom	10'2" x 10'6"	107 sq. ft	Yes
16	W.I.C.	6'6" x 5'5"	35 sq. ft	Yes
17	Hall	12'10" x 9'3"	119 sq. ft	Yes
18	Bath	8'10" x 11'0"	97 sq. ft	Yes
19	Bedroom	9'2" x 10'6"	96 sq. ft	Yes

1 Floor 1 - Utility



Dimensions: 5'8" x 32'8"
Area: 184 sq. ft
Counted as living area: No

Heated: Yes
Finished: No
Enclosed: Yes
Contiguous: Yes
Permitted: Yes
Wet space: No
Addition: No
Conversion: No

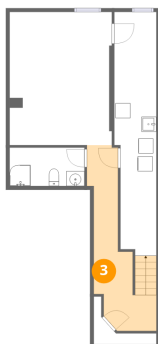
2 Floor 1 - Bath



Dimensions: 10'0" x 5'2"
Area: 52 sq. ft
Counted as living area: Yes

Heated: Yes
Finished: Yes
Enclosed: Yes
Contiguous: Yes
Permitted: Yes
Wet space: Yes
Addition: No
Conversion: No

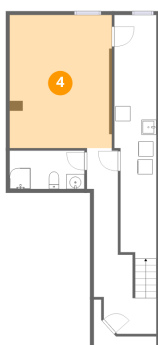
3 Floor 1 - Hall



Dimensions: 5'3" x 24'4"
Area: 127 sq. ft
Counted as living area: Yes

Heated: Yes
Finished: Yes
Enclosed: Yes
Contiguous: Yes
Permitted: Yes
Wet space: No
Addition: No
Conversion: No

4 Floor 1 - Recreation Room



Dimensions: 13'8" x 17'10"
Area: 245 sq. ft
Counted as living area: Yes

Heated: Yes
Finished: Yes
Enclosed: Yes
Contiguous: Yes
Permitted: Yes
Wet space: No
Addition: No
Conversion: No

5 Floor 2 - Dining Area



Dimensions: 8'7" x 12'1"
Area: 103 sq. ft
Counted as living area: Yes

Heated: Yes
Finished: Yes
Enclosed: Yes
Contiguous: Yes
Permitted: Yes
Wet space: No
Addition: No
Conversion: No

6 Floor 2 - Kitchen



Dimensions: 10'3" x 12'1"
Area: 124 sq. ft
Counted as living area: Yes

Heated: Yes
Finished: Yes
Enclosed: Yes
Contiguous: Yes
Permitted: Yes
Wet space: No
Addition: No
Conversion: No

7 Floor 2 - Living Room



Dimensions: 18'10" x 12'3"
Area: 231 sq. ft
Counted as living area: Yes

Heated: Yes
Finished: Yes
Enclosed: Yes
Contiguous: Yes
Permitted: Yes
Wet space: No
Addition: No
Conversion: No

8 Floor 2 - Foyer



Dimensions: 6'4" x 5'0"
Area: 32 sq. ft
Counted as living area: Yes

Heated: Yes
Finished: Yes
Enclosed: Yes
Contiguous: Yes
Permitted: Yes
Wet space: No
Addition: No
Conversion: No

9 Floor 2 - Bath



Dimensions: 4'5" x 3'7"
Area: 16 sq. ft
Counted as living area: Yes

Heated: Yes
Finished: Yes
Enclosed: Yes
Contiguous: Yes
Permitted: Yes
Wet space: No
Addition: No
Conversion: No

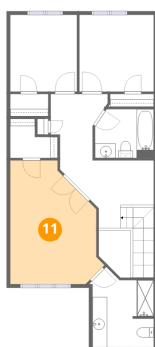
10 Floor 2 - Hall



Dimensions: 8'5" x 15'10"
Area: 133 sq. ft
Counted as living area: Yes

Heated: Yes
Finished: Yes
Enclosed: Yes
Contiguous: Yes
Permitted: Yes
Wet space: No
Addition: No
Conversion: No

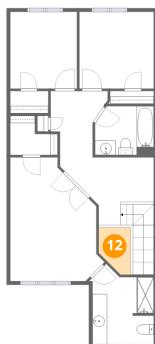
11 Floor 3 - Primary Bedroom



Dimensions: 12'11" x 16'11"
Area: 219 sq. ft
Counted as living area: Yes

Heated: Yes
Finished: Yes
Enclosed: Yes
Contiguous: Yes
Permitted: Yes
Wet space: No
Addition: No
Conversion: No

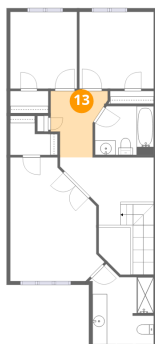
12 Floor 3 - Open To Below



Dimensions: 4'5" x 6'3"
Area: 27 sq. ft
Counted as living area: No

Heated: No
Finished: No
Enclosed: No
Contiguous: Yes
Permitted: No
Wet space: No
Addition: No
Conversion: No

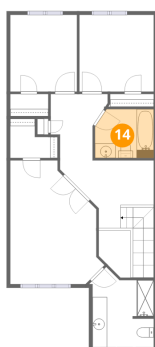
13 Floor 3 - Hall



Dimensions: 7'9" x 9'1"
Area: 71 sq. ft
Counted as living area: Yes

Heated: Yes
Finished: Yes
Enclosed: Yes
Contiguous: Yes
Permitted: Yes
Wet space: No
Addition: No
Conversion: No

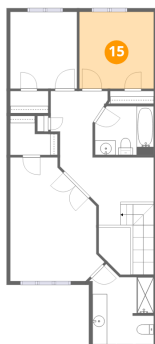
14 Floor 3 - Bath



Dimensions: 8'1" x 6'8"
Area: 54 sq. ft
Counted as living area: Yes

Heated: Yes
Finished: Yes
Enclosed: Yes
Contiguous: Yes
Permitted: Yes
Wet space: Yes
Addition: No
Conversion: No

15 Floor 3 - Bedroom



Dimensions: 10'2" x 10'6"
Area: 107 sq. ft
Counted as living area: Yes

Heated: Yes
Finished: Yes
Enclosed: Yes
Contiguous: Yes
Permitted: Yes
Wet space: No
Addition: No
Conversion: No

16 Floor 3 - W.I.C.



Dimensions: 6'6" x 5'5"
Area: 35 sq. ft
Counted as living area: Yes

Heated: Yes
Finished: Yes
Enclosed: Yes
Contiguous: Yes
Permitted: Yes
Wet space: No
Addition: No
Conversion: No

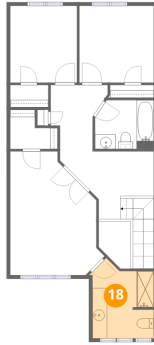
17 Floor 3 - Hall



Dimensions: 12'10" x 9'3"
Area: 119 sq. ft
Counted as living area: Yes

Heated: Yes
Finished: Yes
Enclosed: Yes
Contiguous: Yes
Permitted: Yes
Wet space: No
Addition: No
Conversion: No

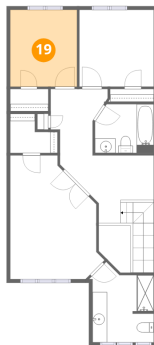
18 Floor 3 - Bath



Dimensions: 8'10" x 11'0"
Area: 97 sq. ft
Counted as living area: Yes

Heated: Yes
Finished: Yes
Enclosed: Yes
Contiguous: Yes
Permitted: Yes
Wet space: Yes
Addition: No
Conversion: No

19 Floor 3 - Bedroom



Dimensions: 9'2" x 10'6"
Area: 96 sq. ft
Counted as living area: Yes

Heated: Yes
Finished: Yes
Enclosed: Yes
Contiguous: Yes
Permitted: Yes
Wet space: No
Addition: No
Conversion: No