

Home data report

29 Biscayne Blvd, Keswick, ON, CA



Total Area: 1658 sq. ft

1st Floor: 351 sq. ft, 2nd Floor: 159 sq. ft, 3rd Floor: 420 sq. ft, 4th Floor: 354 sq. ft, 5th Floor: 374 sq. ft

Excluded: Storage 57 sq. ft, Garage 203 sq. ft, Embedded window 6 sq. ft, Walls: 176 sq. ft

Property summary

 **5** Floors

 **3** Bedrooms

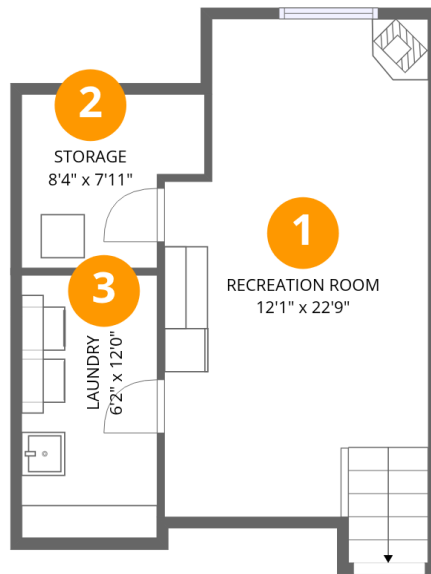
 **2** Bathrooms

Home data report

29 Biscayne Blvd, Keswick, ON, CA

 **1**
Half baths

 **1**
Garages

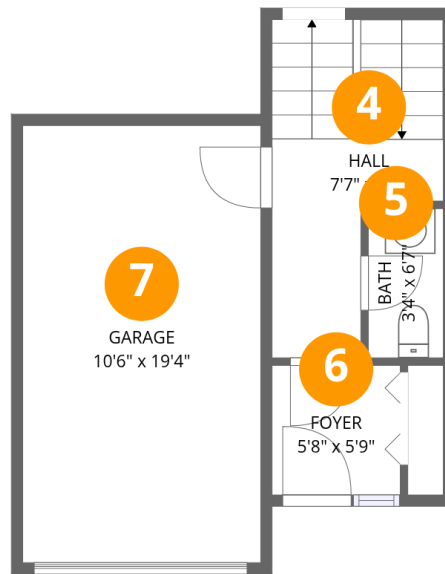


Room dimensions

Floor 1

Total:351sqft Excluded: 57sqft

#		Dimensions	sqft	Counted as living area
1	Recreation Room	12'1" x 22'9"	266 sq. ft	Yes
2	Storage	8'4" x 7'11"	57 sq. ft	No
3	Laundry	6'2" x 12'0"	75 sq. ft	Yes



Room dimensions

Floor 2

Total:159sqft

Excluded: 203sqft

#		Dimensions	sqft	Counted as living area
4	Hall	7'7" x 9'8"	88 sq. ft	Yes
5	Bath	3'4" x 6'7"	22 sq. ft	Yes
6	Foyer	5'8" x 5'9"	32 sq. ft	Yes
7	Garage	10'6" x 19'4"	203 sq. ft	No

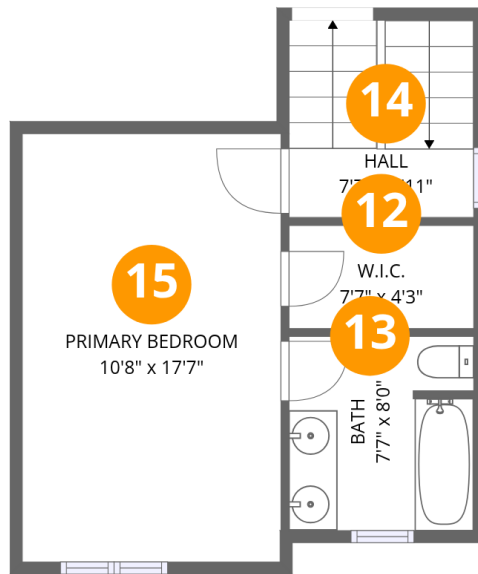


Room dimensions

Floor 3

Total:420sqft Excluded: 6sqft

#		Dimensions	sqft	Counted as living area
8	Living Room	9'10" x 15'4"	151 sq. ft	Yes
9	Kitchen	10'8" x 8'1"	86 sq. ft	Yes
10	Hall	7'7" x 4'3"	73 sq. ft	Yes
11	Dining Area	8'9" x 11'10"	104 sq. ft	Yes



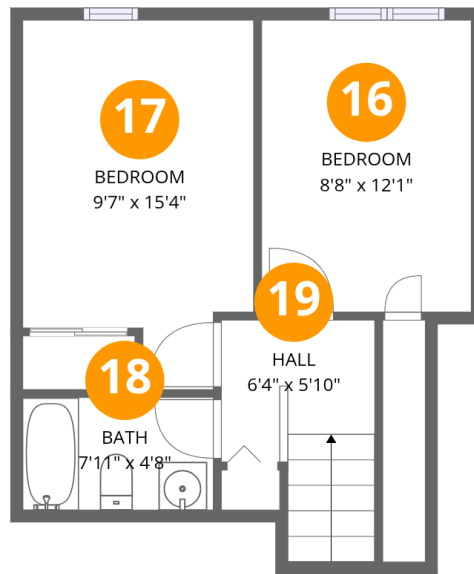
Room dimensions

Floor 4

Total:354sqft Excluded: 0sqft

#		Dimensions	sqft	Counted as living area
12	W.I.C.	7'7" x 4'3"	32 sq. ft	Yes
13	Bath	7'7" x 8'0"	60 sq. ft	Yes
14	Hall	7'7" x 2'11"	62 sq. ft	Yes
15	Primary Bedroom	10'8" x 17'7"	188 sq. ft	Yes

29 Biscayne Blvd, Keswick, ON, CA



Room dimensions

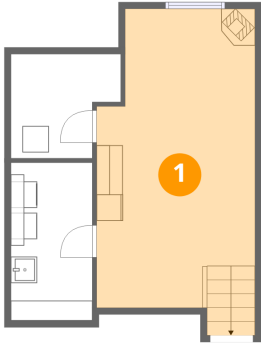
Floor 5

Total:374sqft

Excluded: 0sqft

#		Dimensions	sqft	Counted as living area
16	Bedroom	8'8" x 12'1"	105 sq. ft	Yes
17	Bedroom	9'7" x 15'4"	128 sq. ft	Yes
18	Bath	7'11" x 4'8"	37 sq. ft	Yes
19	Hall	6'4" x 5'10"	52 sq. ft	Yes

1 Floor 1 - Recreation Room



Dimensions: 12'1" x 22'9"
Area: 266 sq. ft
Counted as living area: Yes

Heated: Yes
Finished: Yes
Enclosed: Yes
Contiguous: Yes
Permitted: Yes
Wet space: No
Addition: No
Conversion: No

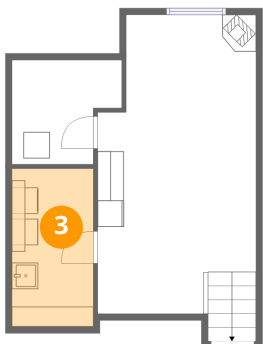
2 Floor 1 - Storage



Dimensions: 8'4" x 7'11"
Area: 57 sq. ft
Counted as living area: No

Heated: No
Finished: No
Enclosed: No
Contiguous: Yes
Permitted: Yes
Wet space: No
Addition: No
Conversion: No

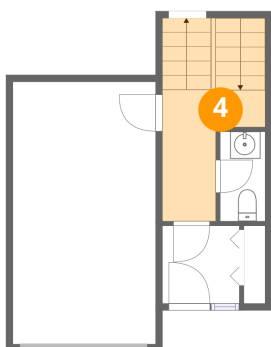
3 Floor 1 - Laundry



Dimensions: 6'2" x 12'0"
Area: 75 sq. ft
Counted as living area: Yes

Heated: Yes
Finished: Yes
Enclosed: Yes
Contiguous: Yes
Permitted: Yes
Wet space: No
Addition: No
Conversion: No

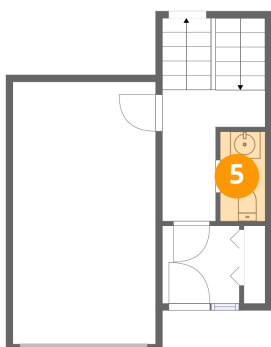
4 Floor 2 - Hall



Dimensions: 7'7" x 9'8"
Area: 88 sq. ft
Counted as living area: Yes

Heated: Yes
Finished: Yes
Enclosed: Yes
Contiguous: Yes
Permitted: Yes
Wet space: No
Addition: No
Conversion: No

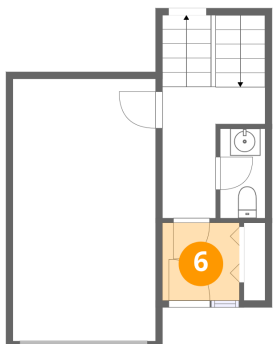
5 Floor 2 - Bath



Dimensions: 3'4" x 6'7"
Area: 22 sq. ft
Counted as living area: Yes

Heated: Yes
Finished: Yes
Enclosed: Yes
Contiguous: Yes
Permitted: Yes
Wet space: Yes
Addition: No
Conversion: No

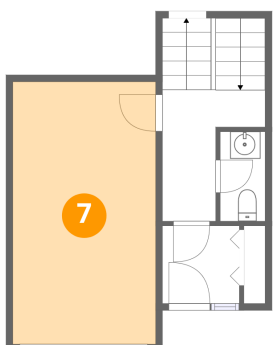
6 Floor 2 - Foyer



Dimensions: 5'8" x 5'9"
Area: 32 sq. ft
Counted as living area: Yes

Heated: Yes
Finished: Yes
Enclosed: Yes
Contiguous: Yes
Permitted: Yes
Wet space: No
Addition: No
Conversion: No

7 Floor 2 - Garage



Dimensions: 10'6" x 19'4"
Area: 203 sq. ft
Counted as living area: No

Heated: No
Finished: No
Enclosed: Yes
Contiguous: Yes
Permitted: Yes
Wet space: No
Addition: No
Conversion: No

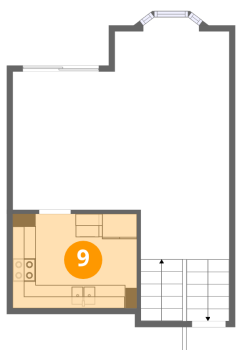
8 Floor 3 - Living Room



Dimensions: 9'10" x 15'4"
Area: 151 sq. ft
Counted as living area: Yes

Heated: Yes
Finished: Yes
Enclosed: Yes
Contiguous: Yes
Permitted: Yes
Wet space: No
Addition: No
Conversion: No

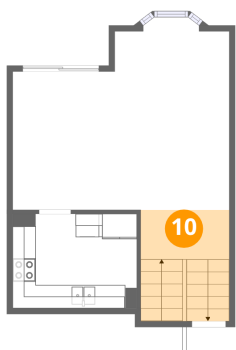
9 Floor 3 - Kitchen



Dimensions: 10'8" x 8'1"
Area: 86 sq. ft
Counted as living area: Yes

Heated: Yes
Finished: Yes
Enclosed: Yes
Contiguous: Yes
Permitted: Yes
Wet space: No
Addition: No
Conversion: No

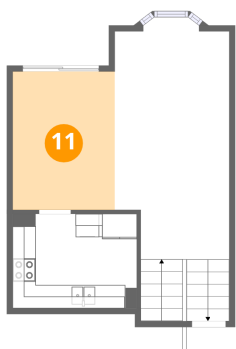
10 Floor 3 - Hall



Dimensions: 7'7" x 4'3"
Area: 73 sq. ft
Counted as living area: Yes

Heated: Yes
Finished: Yes
Enclosed: Yes
Contiguous: Yes
Permitted: Yes
Wet space: No
Addition: No
Conversion: No

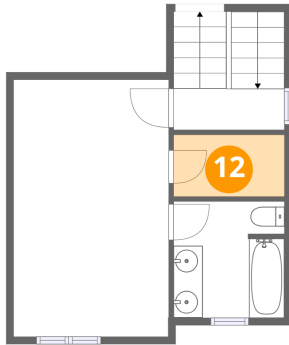
11 Floor 3 - Dining Area



Dimensions: 8'9" x 11'10"
Area: 104 sq. ft
Counted as living area: Yes

Heated: Yes
Finished: Yes
Enclosed: Yes
Contiguous: Yes
Permitted: Yes
Wet space: No
Addition: No
Conversion: No

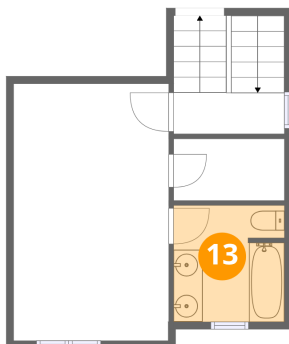
12 Floor 4 - W.I.C.



Dimensions: 7'7" x 4'3"
Area: 32 sq. ft
Counted as living area: Yes

Heated: Yes
Finished: Yes
Enclosed: Yes
Contiguous: Yes
Permitted: Yes
Wet space: No
Addition: No
Conversion: No

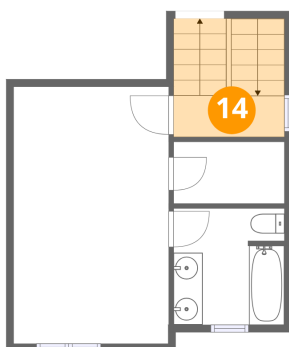
13 Floor 4 - Bath



Dimensions: 7'7" x 8'0"
Area: 60 sq. ft
Counted as living area: Yes

Heated: Yes
Finished: Yes
Enclosed: Yes
Contiguous: Yes
Permitted: Yes
Wet space: Yes
Addition: No
Conversion: No

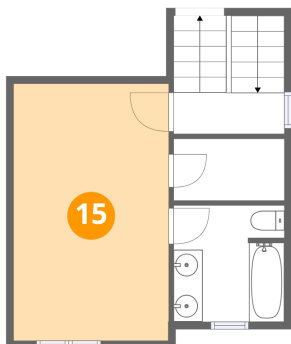
14 Floor 4 - Hall



Dimensions: 7'7" x 2'11"
Area: 62 sq. ft
Counted as living area: Yes

Heated: Yes
Finished: Yes
Enclosed: Yes
Contiguous: Yes
Permitted: Yes
Wet space: No
Addition: No
Conversion: No

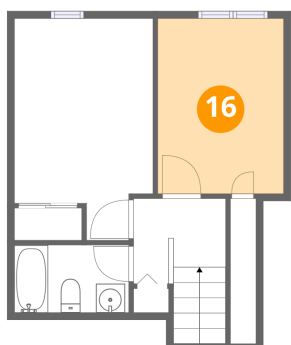
15 Floor 4 - Primary Bedroom



Dimensions: 10'8" x 17'7"
Area: 188 sq. ft
Counted as living area: Yes

Heated: Yes
Finished: Yes
Enclosed: Yes
Contiguous: Yes
Permitted: Yes
Wet space: No
Addition: No
Conversion: No

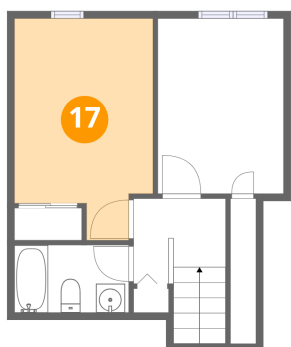
16 Floor 5 - Bedroom



Dimensions: 8'8" x 12'1"
Area: 105 sq. ft
Counted as living area: Yes

Heated: Yes
Finished: Yes
Enclosed: Yes
Contiguous: Yes
Permitted: Yes
Wet space: No
Addition: No
Conversion: No

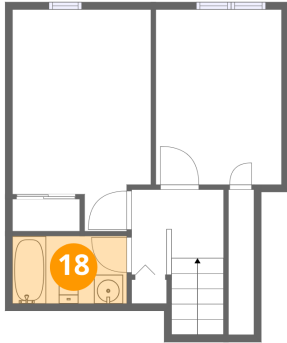
17 Floor 5 - Bedroom



Dimensions: 9'7" x 15'4"
Area: 128 sq. ft
Counted as living area: Yes

Heated: Yes
Finished: Yes
Enclosed: Yes
Contiguous: Yes
Permitted: Yes
Wet space: No
Addition: No
Conversion: No

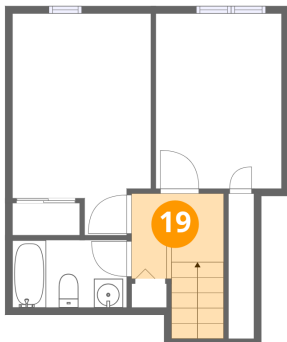
18 Floor 5 - Bath



Dimensions: 7'11" x 4'8"
Area: 37 sq. ft
Counted as living area: Yes

Heated: Yes
Finished: Yes
Enclosed: Yes
Contiguous: Yes
Permitted: Yes
Wet space: Yes
Addition: No
Conversion: No

19 Floor 5 - Hall



Dimensions: 6'4" x 5'10"
Area: 52 sq. ft
Counted as living area: Yes

Heated: Yes
Finished: Yes
Enclosed: Yes
Contiguous: Yes
Permitted: Yes
Wet space: No
Addition: No
Conversion: No