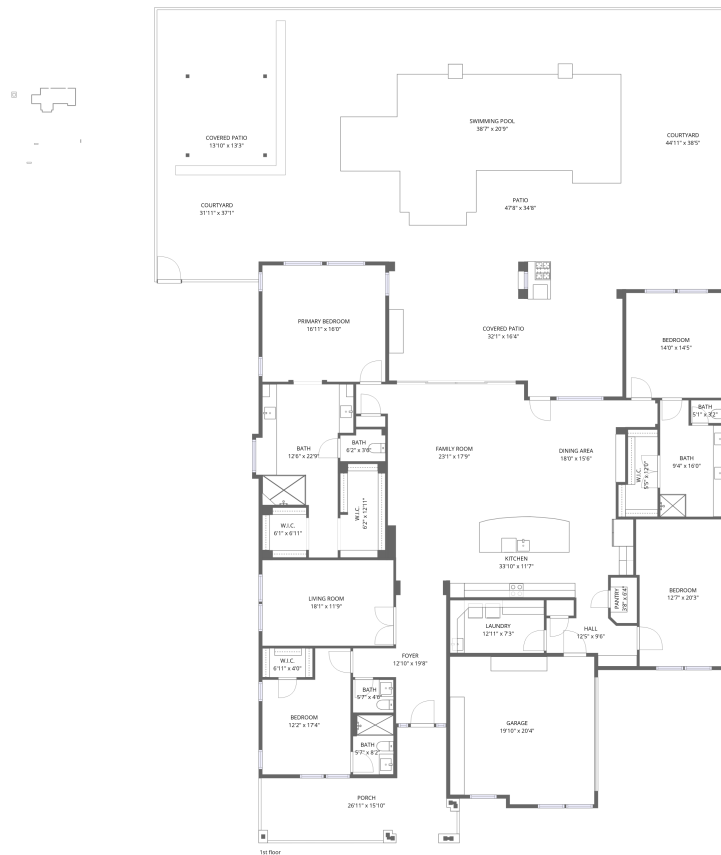


Home data report

4729 North 209th Drive, Verrado, Buckeye, Maricopa County, Arizona, United States, 85396



Total Area: 3590 sq. ft

1st Floor: 3590 sq. ft

Excluded: Porch 280 sq. ft, Covered patio 730 sq. ft, Patio 981 sq. ft, Courtyard 1102 sq. ft, Walls: 180 sq. ft

Property summary



1 Floors



4 Bedrooms



3 Bathrooms

Home data report

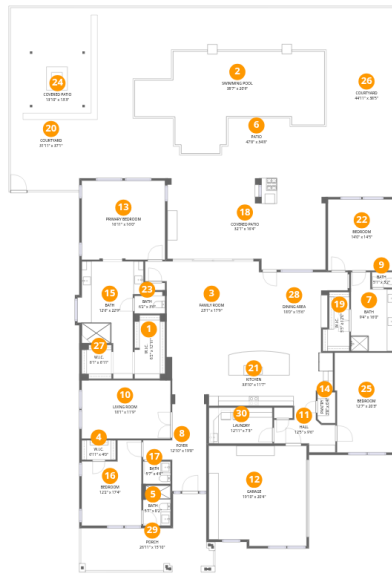
**4729 North 209th Drive, Verrado, Buckeye, Maricopa County,
Arizona, United States, 85396**

 **1**
Half baths

 **1**
Garages

Home data report

4729 North 209th Drive, Verrado, Buckeye, Maricopa County, Arizona, United States, 85396



Room dimensions

Floor 1

Total:3590sqft

Excluded: 3093sqft

#		Dimensions	sqft	Counted as living area
1	W.I.C.	6'2" x 12'11"	80 sq. ft	Yes
2	Swimming Pool	38'7" x 20'9"	801 sq. ft	No
3	Family Room	23'1" x 17'9"	411 sq. ft	Yes
4	W.I.C.	6'11" x 4'0"	28 sq. ft	Yes
5	Bath	5'7" x 8'2"	46 sq. ft	Yes
6	Patio	47'8" x 34'8"	1651 sq. ft	No
7	Bath	9'4" x 16'0"	149 sq. ft	Yes
8	Foyer	12'10" x 19'8"	252 sq. ft	Yes
9	Bath	5'1" x 3'2"	16 sq. ft	Yes
10	Living Room	18'1" x 11'9"	212 sq. ft	Yes
11	Hall	12'5" x 9'6"	118 sq. ft	Yes

Home data report

4729 North 209th Drive, Verrado, Buckeye, Maricopa County, Arizona, United States, 85396

#		Dimensions	sqft	Counted as living area
12	Garage	19'10" x 20'4"	404 sq. ft	Yes
13	Primary Bedroom	16'11" x 16'0"	271 sq. ft	Yes
14	Pantry	3'8" x 6'4"	23 sq. ft	Yes
15	Bath	12'6" x 22'9"	285 sq. ft	Yes
16	Bedroom	12'2" x 17'4"	211 sq. ft	Yes
17	Bath	5'7" x 4'6"	25 sq. ft	Yes
18	Covered Patio	32'1" x 16'4"	526 sq. ft	No
19	W.I.C.	5'5" x 12'0"	65 sq. ft	Yes
20	Courtyard	31'11" x 37'1"	1182 sq. ft	No
21	Kitchen	33'10" x 11'7"	390 sq. ft	Yes
22	Bedroom	14'0" x 14'5"	202 sq. ft	Yes
23	Bath	6'2" x 3'6"	22 sq. ft	Yes
24	Covered Patio	13'10" x 13'3"	183 sq. ft	No
25	Bedroom	12'7" x 20'3"	255 sq. ft	Yes
26	Courtyard	44'11" x 38'5"	1726 sq. ft	No
27	W.I.C.	6'1" x 6'11"	42 sq. ft	Yes
28	Dining Area	18'0" x 15'6"	279 sq. ft	Yes
29	Porch	26'11" x 15'10"	427 sq. ft	No
30	Laundry	12'11" x 7'3"	94 sq. ft	Yes

4729 North 209th Drive, Verrado, Buckeye, Maricopa County, Arizona, United States, 85396

1 Floor 1 - W.I.C.



Dimensions: 6'2" x 12'11"
Area: 80 sq. ft
Counted as living area: Yes

Heated: Yes
Finished: Yes
Enclosed: Yes
Contiguous: Yes
Permitted: Yes
Wet space: No
Addition: No
Conversion: No

2 Floor 1 - Swimming Pool



Dimensions: 38'7" x 20'9"
Area: 801 sq. ft
Counted as living area: No

Heated: No
Finished: No
Enclosed: No
Contiguous: Yes
Permitted: No
Wet space: No
Addition: No
Conversion: No

4729 North 209th Drive, Verrado, Buckeye, Maricopa County, Arizona, United States, 85396

3 Floor 1 - Family Room



Dimensions: 23'1" x 17'9"
Area: 411 sq. ft
Counted as living area: Yes

Heated: Yes
Finished: Yes
Enclosed: Yes
Contiguous: Yes
Permitted: Yes
Wet space: No
Addition: No
Conversion: No

4 Floor 1 - W.I.C.



Dimensions: 6'11" x 4'0"
Area: 28 sq. ft
Counted as living area: Yes

Heated: Yes
Finished: Yes
Enclosed: Yes
Contiguous: Yes
Permitted: Yes
Wet space: No
Addition: No
Conversion: No

5 Floor 1 - Bath



Dimensions: 5'7" x 8'2"
Area: 46 sq. ft
Counted as living area: Yes

Heated: Yes
Finished: Yes
Enclosed: Yes
Contiguous: Yes
Permitted: Yes
Wet space: Yes
Addition: No
Conversion: No

4729 North 209th Drive, Verrado, Buckeye, Maricopa County, Arizona, United States, 85396

6 Floor 1 - Patio



Dimensions: 47'8" x 34'8"
Area: 1651 sq. ft
Counted as living area: No

Heated: No
Finished: No
Enclosed: No
Contiguous: Yes
Permitted: Yes
Wet space: No
Addition: No
Conversion: No

7 Floor 1 - Bath



Dimensions: 9'4" x 16'0"
Area: 149 sq. ft
Counted as living area: Yes

Heated: Yes
Finished: Yes
Enclosed: Yes
Contiguous: Yes
Permitted: Yes
Wet space: Yes
Addition: No
Conversion: No

8 Floor 1 - Foyer



Dimensions: 12'10" x 19'8"
Area: 252 sq. ft
Counted as living area: Yes

Heated: Yes
Finished: Yes
Enclosed: Yes
Contiguous: Yes
Permitted: Yes
Wet space: No
Addition: No
Conversion: No

4729 North 209th Drive, Verrado, Buckeye, Maricopa County, Arizona, United States, 85396

9 Floor 1 - Bath



Dimensions: 5'1" x 3'2"
Area: 16 sq. ft
Counted as living area: Yes

Heated: Yes
Finished: Yes
Enclosed: Yes
Contiguous: Yes
Permitted: Yes
Wet space: Yes
Addition: No
Conversion: No

10 Floor 1 - Living Room



Dimensions: 18'1" x 11'9"
Area: 212 sq. ft
Counted as living area: Yes

Heated: Yes
Finished: Yes
Enclosed: Yes
Contiguous: Yes
Permitted: Yes
Wet space: No
Addition: No
Conversion: No

11 Floor 1 - Hall



Dimensions: 12'5" x 9'6"
Area: 118 sq. ft
Counted as living area: Yes

Heated: Yes
Finished: Yes
Enclosed: Yes
Contiguous: Yes
Permitted: Yes
Wet space: No
Addition: No
Conversion: No

4729 North 209th Drive, Verrado, Buckeye, Maricopa County, Arizona, United States, 85396

12 Floor 1 - Garage



Dimensions: 19'10" x 20'4"

Area: 404 sq. ft

Counted as living area: No

Heated: No

Finished: Yes

Enclosed: Yes

Contiguous: Yes

Permitted: Yes

Wet space: No

Addition: No

Conversion: No

13 Floor 1 - Primary Bedroom



Dimensions: 16'11" x 16'0"

Area: 271 sq. ft

Counted as living area: Yes

Heated: Yes

Finished: Yes

Enclosed: Yes

Contiguous: Yes

Permitted: Yes

Wet space: No

Addition: No

Conversion: No

14 Floor 1 - Pantry



Dimensions: 3'8" x 6'4"

Area: 23 sq. ft

Counted as living area: Yes

Heated: Yes

Finished: Yes

Enclosed: Yes

Contiguous: Yes

Permitted: Yes

Wet space: No

Addition: No

Conversion: No

4729 North 209th Drive, Verrado, Buckeye, Maricopa County, Arizona, United States, 85396

15 Floor 1 - Bath



Dimensions: 12'6" x 22'9"
Area: 285 sq. ft
Counted as living area: Yes

Heated: Yes
Finished: Yes
Enclosed: Yes
Contiguous: Yes
Permitted: Yes
Wet space: Yes
Addition: No
Conversion: No

16 Floor 1 - Bedroom



Dimensions: 12'2" x 17'4"
Area: 211 sq. ft
Counted as living area: Yes

Heated: Yes
Finished: Yes
Enclosed: Yes
Contiguous: Yes
Permitted: Yes
Wet space: No
Addition: No
Conversion: No

17 Floor 1 - Bath



Dimensions: 5'7" x 4'6"
Area: 25 sq. ft
Counted as living area: Yes

Heated: Yes
Finished: Yes
Enclosed: Yes
Contiguous: Yes
Permitted: Yes
Wet space: No
Addition: No
Conversion: No

4729 North 209th Drive, Verrado, Buckeye, Maricopa County, Arizona, United States, 85396

18 Floor 1 - Covered Patio



Dimensions: 32'1" x 16'4"
Area: 526 sq. ft
Counted as living area: No

Heated: No
Finished: No
Enclosed: No
Contiguous: Yes
Permitted: Yes
Wet space: No
Addition: No
Conversion: No

19 Floor 1 - W.I.C.



Dimensions: 5'5" x 12'0"
Area: 65 sq. ft
Counted as living area: Yes

Heated: Yes
Finished: Yes
Enclosed: Yes
Contiguous: Yes
Permitted: Yes
Wet space: No
Addition: No
Conversion: No

20 Floor 1 - Courtyard



Dimensions: 31'11" x 37'1"
Area: 1182 sq. ft
Counted as living area: No

Heated: No
Finished: No
Enclosed: No
Contiguous: Yes
Permitted: No
Wet space: No
Addition: No
Conversion: No

4729 North 209th Drive, Verrado, Buckeye, Maricopa County, Arizona, United States, 85396

21 Floor 1 - Kitchen



Dimensions: 33'10" x 11'7"
Area: 390 sq. ft
Counted as living area: Yes

Heated: Yes
Finished: Yes
Enclosed: Yes
Contiguous: Yes
Permitted: Yes
Wet space: No
Addition: No
Conversion: No

22 Floor 1 - Bedroom



Dimensions: 14'0" x 14'5"
Area: 202 sq. ft
Counted as living area: Yes

Heated: Yes
Finished: Yes
Enclosed: Yes
Contiguous: Yes
Permitted: Yes
Wet space: No
Addition: No
Conversion: No

23 Floor 1 - Bath



Dimensions: 6'2" x 3'6"
Area: 22 sq. ft
Counted as living area: Yes

Heated: Yes
Finished: Yes
Enclosed: Yes
Contiguous: Yes
Permitted: Yes
Wet space: Yes
Addition: No
Conversion: No

4729 North 209th Drive, Verrado, Buckeye, Maricopa County, Arizona, United States, 85396

24 Floor 1 - Covered Patio



Dimensions: 13'10" x 13'3"
Area: 183 sq. ft
Counted as living area: No

Heated: No
Finished: No
Enclosed: No
Contiguous: Yes
Permitted: Yes
Wet space: No
Addition: No
Conversion: No

25 Floor 1 - Bedroom



Dimensions: 12'7" x 20'3"
Area: 255 sq. ft
Counted as living area: Yes

Heated: Yes
Finished: Yes
Enclosed: Yes
Contiguous: Yes
Permitted: Yes
Wet space: No
Addition: No
Conversion: No

26 Floor 1 - Courtyard



Dimensions: 44'11" x 38'5"
Area: 1726 sq. ft
Counted as living area: No

Heated: No
Finished: No
Enclosed: No
Contiguous: Yes
Permitted: No
Wet space: No
Addition: No
Conversion: No

4729 North 209th Drive, Verrado, Buckeye, Maricopa County, Arizona, United States, 85396

27 Floor 1 - W.I.C.



Dimensions: 6'1" x 6'11"
Area: 42 sq. ft
Counted as living area: Yes

Heated: Yes
Finished: Yes
Enclosed: Yes
Contiguous: Yes
Permitted: Yes
Wet space: No
Addition: No
Conversion: No

28 Floor 1 - Dining Area



Dimensions: 18'0" x 15'6"
Area: 279 sq. ft
Counted as living area: Yes

Heated: Yes
Finished: Yes
Enclosed: Yes
Contiguous: Yes
Permitted: Yes
Wet space: No
Addition: No
Conversion: No

29 Floor 1 - Porch



Dimensions: 26'11" x 15'10"
Area: 427 sq. ft
Counted as living area: No

Heated: No
Finished: No
Enclosed: No
Contiguous: Yes
Permitted: Yes
Wet space: No
Addition: No
Conversion: No

Home data report

4729 North 209th Drive, Verrado, Buckeye, Maricopa County,
Arizona, United States, 85396

30 Floor 1 - Laundry



Dimensions: 12'11" x 7'3"
Area: 94 sq. ft
Counted as living area: Yes

Heated: Yes
Finished: Yes
Enclosed: Yes
Contiguous: Yes
Permitted: Yes
Wet space: No
Addition: No
Conversion: No