

Home report

306 Oak Wood Cir, McDonald, Pennsylvania 15057, United States



Total Area: 2021 sq. ft

Below Ground: 0 sq. ft, Floor 2: 1004 sq. ft, Floor 3: 1017 sq. ft

Excluded: Basement 459 sq. ft, Garage 543 sq. ft, Covered patio 256 sq. ft, Walls: 212 sq. ft

Property summary

 **3** Floors

 **4** Bedrooms

 **2** Bathrooms

Home report

**306 Oak Wood Cir, McDonald, Pennsylvania 15057, United States**



**1**  
Half baths



**1**  
Garages

Home report

306 Oak Wood Cir, McDonald, Pennsylvania 15057, United States



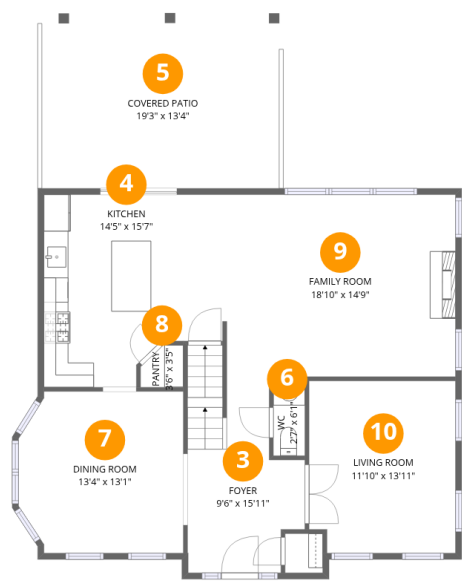
Room dimensions

Floor 1 Below ground Total:0sqft Excluded: 1002sqft

#		Max Dimensions	sqft	Included
1	Garage	18'4" x 30'3"	542 sq. ft	No
2	Basement	16'5" x 29'0"	458 sq. ft	No

Home report

306 Oak Wood Cir, McDonald, Pennsylvania 15057, United States



Room dimensions

Floor 2

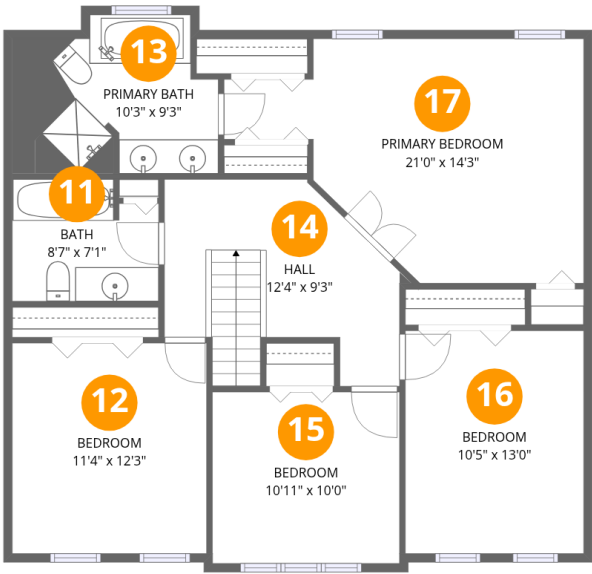
Total:1004sqft

Excluded: 256sqft

#		Max Dimensions	sqft	Included
3	Foyer	9'6" x 15'11"	131 sq. ft	Yes
4	Kitchen	14'5" x 15'7"	202 sq. ft	Yes
5	Covered Patio	19'3" x 13'4"	256 sq. ft	No
6	WC	2'7" x 6'1"	16 sq. ft	Yes
7	Dining Room	13'4" x 13'1"	166 sq. ft	Yes
8	Pantry	3'6" x 3'5"	10 sq. ft	Yes
9	Family Room	18'10" x 14'9"	277 sq. ft	Yes
10	Living Room	11'10" x 13'11"	163 sq. ft	Yes

Home report

306 Oak Wood Cir, McDonald, Pennsylvania 15057, United States



Room dimensions

Floor 3

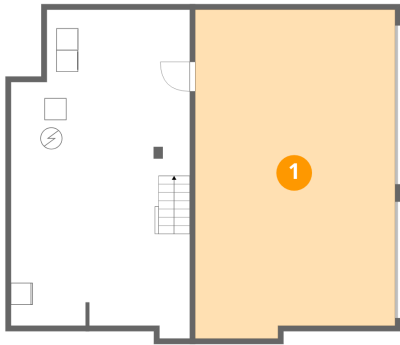
Total:1017sqft

Excluded: 0sqft

#		Max Dimensions	sqft	Included
11	Bath	8'7" x 7'1"	57 sq. ft	Yes
12	Bedroom	11'4" x 12'3"	139 sq. ft	Yes
13	Primary Bath	10'3" x 9'3"	98 sq. ft	Yes
14	Hall	12'4" x 9'3"	130 sq. ft	Yes
15	Bedroom	10'11" x 10'0"	109 sq. ft	Yes
16	Bedroom	10'5" x 13'0"	135 sq. ft	Yes
17	Primary Bedroom	21'0" x 14'3"	225 sq. ft	Yes

306 Oak Wood Cir, McDonald, Pennsylvania 15057, United States

1 Floor 1 - Garage



Max Dimensions: 18'4" x 30'3"  
Calculated Area: 542 sq. ft  
Included: No

Heated: No  
Finished: No  
Enclosed: Yes  
Contiguous: Yes  
Permitted: Yes  
Wet space: No  
Addition: No  
Conversion: No

2 Floor 1 - Basement

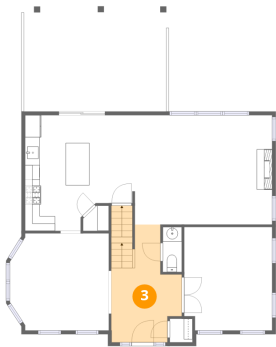


Max Dimensions: 16'5" x 29'0"  
Calculated Area: 458 sq. ft  
Included: No

Heated: Yes  
Finished: No  
Enclosed: Yes  
Contiguous: Yes  
Permitted: Yes  
Wet space: No  
Addition: No  
Conversion: No

306 Oak Wood Cir, McDonald, Pennsylvania 15057, United States

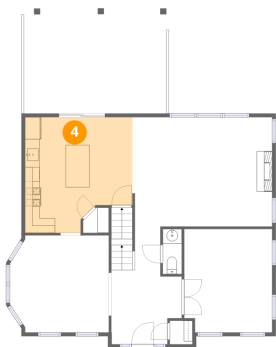
3 Floor 2 - Foyer



Max Dimensions: 9'6" x 15'11"  
Calculated Area: 131 sq. ft  
Included: Yes

Heated: Yes  
Finished: Yes  
Enclosed: Yes  
Contiguous: Yes  
Permitted: Yes  
Wet space: No  
Addition: No  
Conversion: No

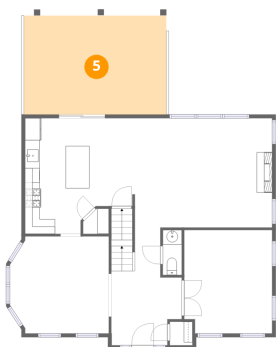
4 Floor 2 - Kitchen



Max Dimensions: 14'5" x 15'7"  
Calculated Area: 202 sq. ft  
Included: Yes

Heated: Yes  
Finished: Yes  
Enclosed: Yes  
Contiguous: Yes  
Permitted: Yes  
Wet space: No  
Addition: No  
Conversion: No

5 Floor 2 - Covered Patio



Max Dimensions: 19'3" x 13'4"  
Calculated Area: 256 sq. ft  
Included: No

Heated: No  
Finished: No  
Enclosed: No  
Contiguous: Yes  
Permitted: Yes  
Wet space: No  
Addition: No  
Conversion: No

## 6 Floor 2 - WC



Max Dimensions: 2'7" x 6'1"  
Calculated Area: 16 sq. ft  
Included: Yes

Heated: Yes  
Finished: Yes  
Enclosed: Yes  
Contiguous: Yes  
Permitted: Yes  
Wet space: Yes  
Addition: No  
Conversion: No

## 7 Floor 2 - Dining Room



Max Dimensions: 13'4" x 13'1"  
Calculated Area: 166 sq. ft  
Included: Yes

Heated: Yes  
Finished: Yes  
Enclosed: Yes  
Contiguous: Yes  
Permitted: Yes  
Wet space: No  
Addition: No  
Conversion: No

## 8 Floor 2 - Pantry

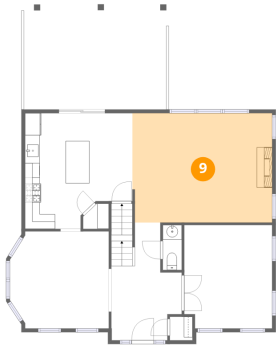


Max Dimensions: 3'6" x 3'5"  
Calculated Area: 10 sq. ft  
Included: Yes

Heated: Yes  
Finished: Yes  
Enclosed: Yes  
Contiguous: Yes  
Permitted: Yes  
Wet space: No  
Addition: No  
Conversion: No



9 Floor 2 - Family Room



Max Dimensions: 18'10" x 14'9"  
Calculated Area: 277 sq. ft  
Included: Yes

Heated: Yes  
Finished: Yes  
Enclosed: Yes  
Contiguous: Yes  
Permitted: Yes  
Wet space: No  
Addition: No  
Conversion: No

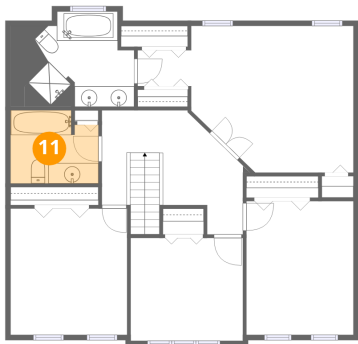
10 Floor 2 - Living Room



Max Dimensions: 11'10" x 13'11"  
Calculated Area: 163 sq. ft  
Included: Yes

Heated: Yes  
Finished: Yes  
Enclosed: Yes  
Contiguous: Yes  
Permitted: Yes  
Wet space: No  
Addition: No  
Conversion: No

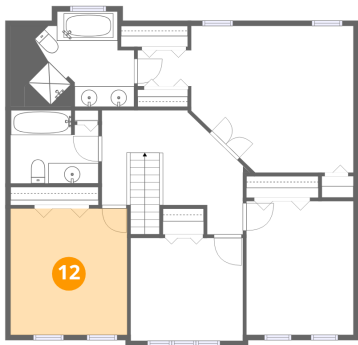
11 Floor 3 - Bath



Max Dimensions: 8'7" x 7'1"  
Calculated Area: 57 sq. ft  
Included: Yes

Heated: Yes  
Finished: Yes  
Enclosed: Yes  
Contiguous: Yes  
Permitted: Yes  
Wet space: Yes  
Addition: No  
Conversion: No

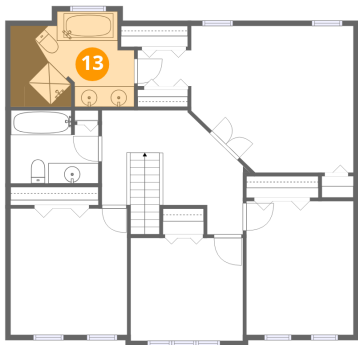
12 Floor 3 - Bedroom



Max Dimensions: 11'4" x 12'3"  
Calculated Area: 139 sq. ft  
Included: Yes

Heated: Yes  
Finished: Yes  
Enclosed: Yes  
Contiguous: Yes  
Permitted: Yes  
Wet space: No  
Addition: No  
Conversion: No

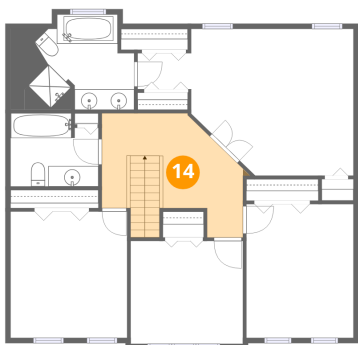
13 Floor 3 - Primary Bath



Max Dimensions: 10'3" x 9'3"  
Calculated Area: 98 sq. ft  
Included: Yes

Heated: Yes  
Finished: Yes  
Enclosed: Yes  
Contiguous: Yes  
Permitted: Yes  
Wet space: Yes  
Addition: No  
Conversion: No

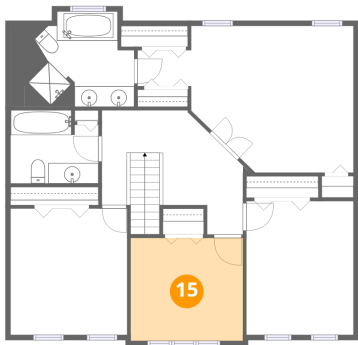
14 Floor 3 - Hall



Max Dimensions: 12'4" x 9'3"  
Calculated Area: 130 sq. ft  
Included: Yes

Heated: Yes  
Finished: Yes  
Enclosed: Yes  
Contiguous: Yes  
Permitted: Yes  
Wet space: No  
Addition: No  
Conversion: No

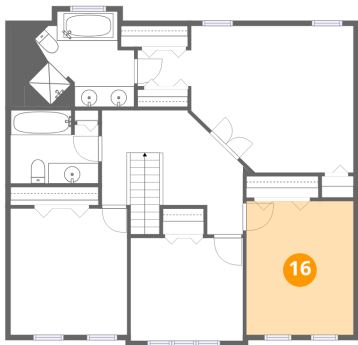
15 Floor 3 - Bedroom



Max Dimensions: 10'11" x 10'0"  
Calculated Area: 109 sq. ft  
Included: Yes

Heated: Yes  
Finished: Yes  
Enclosed: Yes  
Contiguous: Yes  
Permitted: Yes  
Wet space: No  
Addition: No  
Conversion: No

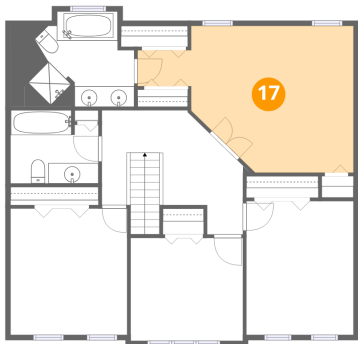
16 Floor 3 - Bedroom



Max Dimensions: 10'5" x 13'0"  
Calculated Area: 135 sq. ft  
Included: Yes

Heated: Yes  
Finished: Yes  
Enclosed: Yes  
Contiguous: Yes  
Permitted: Yes  
Wet space: No  
Addition: No  
Conversion: No

17 Floor 3 - Primary Bedroom



Max Dimensions: 21'0" x 14'3"  
Calculated Area: 225 sq. ft  
Included: Yes

Heated: Yes  
Finished: Yes  
Enclosed: Yes  
Contiguous: Yes  
Permitted: Yes  
Wet space: No  
Addition: No  
Conversion: No