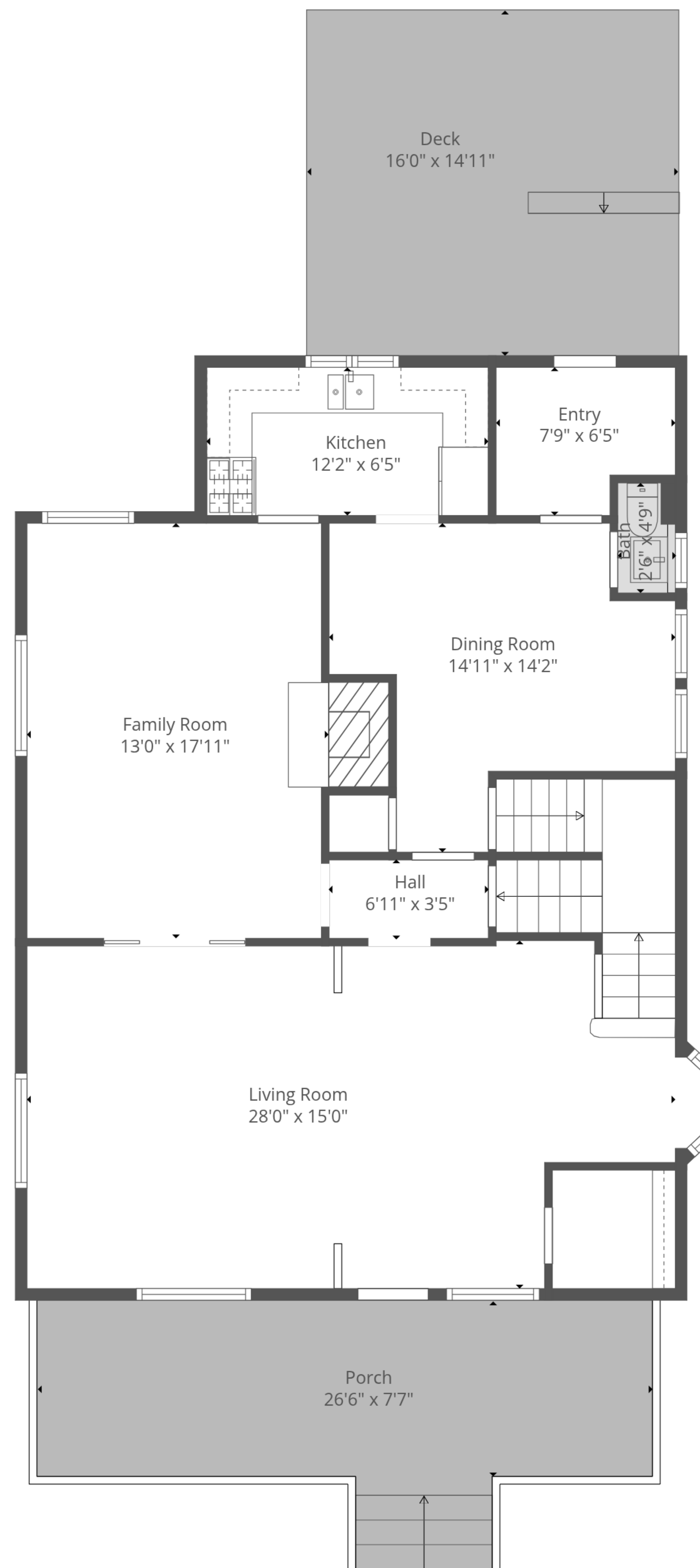


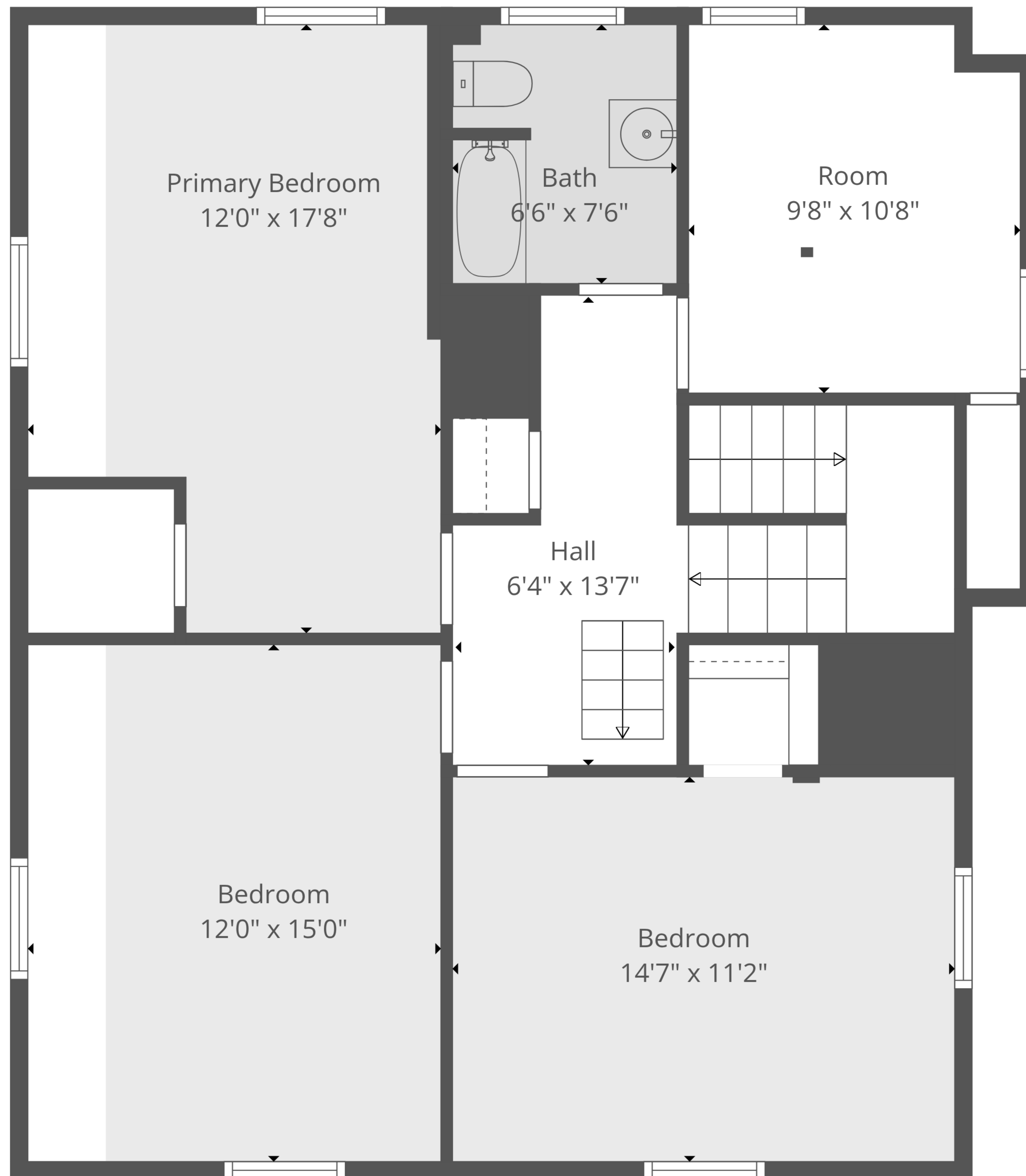
TOTAL: 2054 sq. ft

Basement: 28 sq. ft, 1st floor: 1060 sq. ft, 2nd floor: 831 sq. ft, 3rd floor: 135 sq. ft
EXCLUDED AREAS: BASEMENT: 833 sq. ft, ROOM: 180 sq. ft, PORCH: 226 sq. ft,
DECK: 240 sq. ft, BAY WINDOW: 5 sq. ft, LOW CEILING: 306 sq. ft,
ATTIC: 115 sq. ft, WALLS: 250 sq. ft



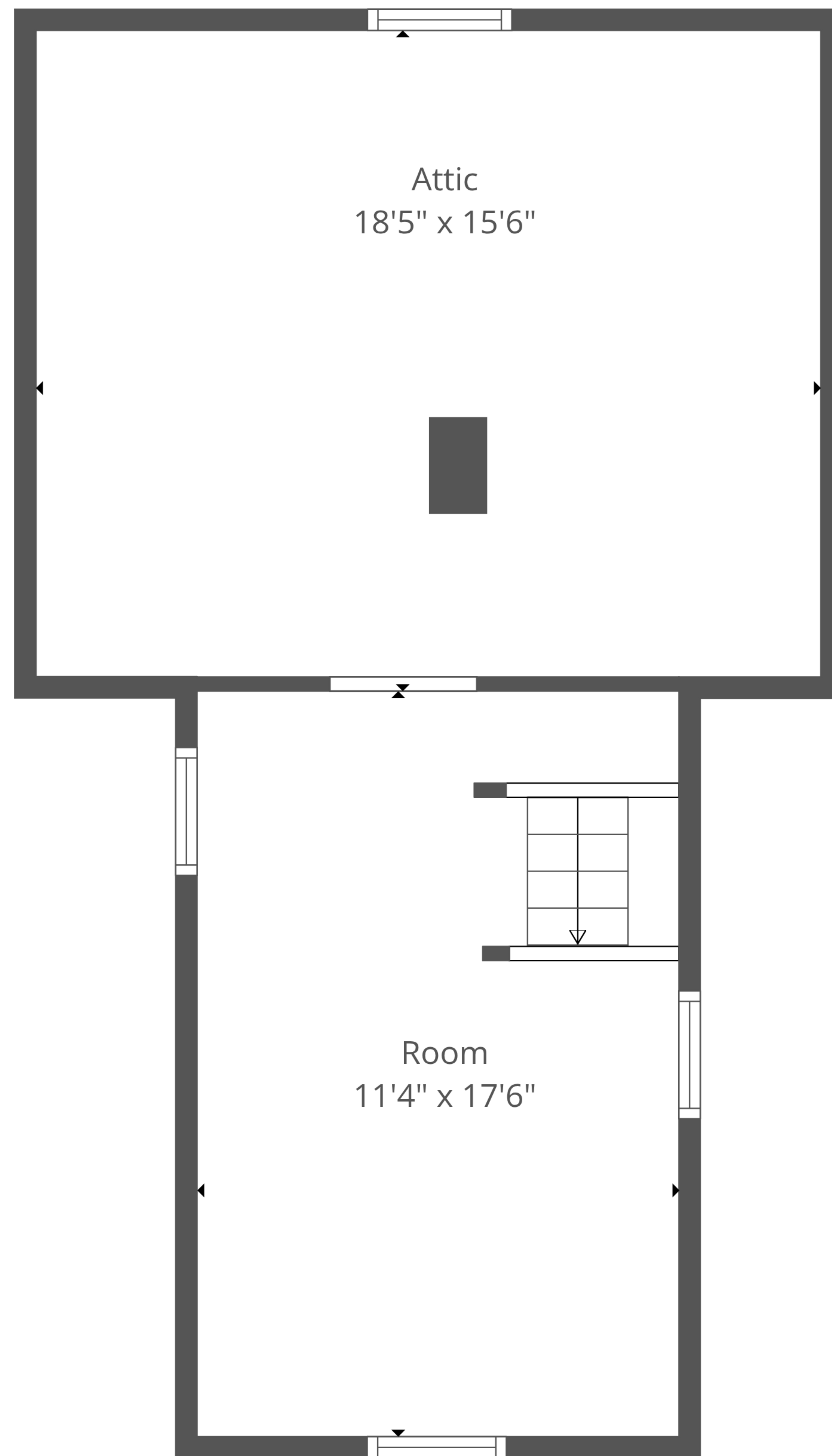
TOTAL: 2054 sq. ft

Basement: 28 sq. ft, 1st floor: 1060 sq. ft, 2nd floor: 831 sq. ft, 3rd floor: 135 sq. ft
 EXCLUDED AREAS: BASEMENT: 833 sq. ft, ROOM: 180 sq. ft, PORCH: 226 sq. ft,
 DECK: 240 sq. ft, BAY WINDOW: 5 sq. ft, LOW CEILING: 306 sq. ft,
 ATTIC: 115 sq. ft, WALLS: 250 sq. ft



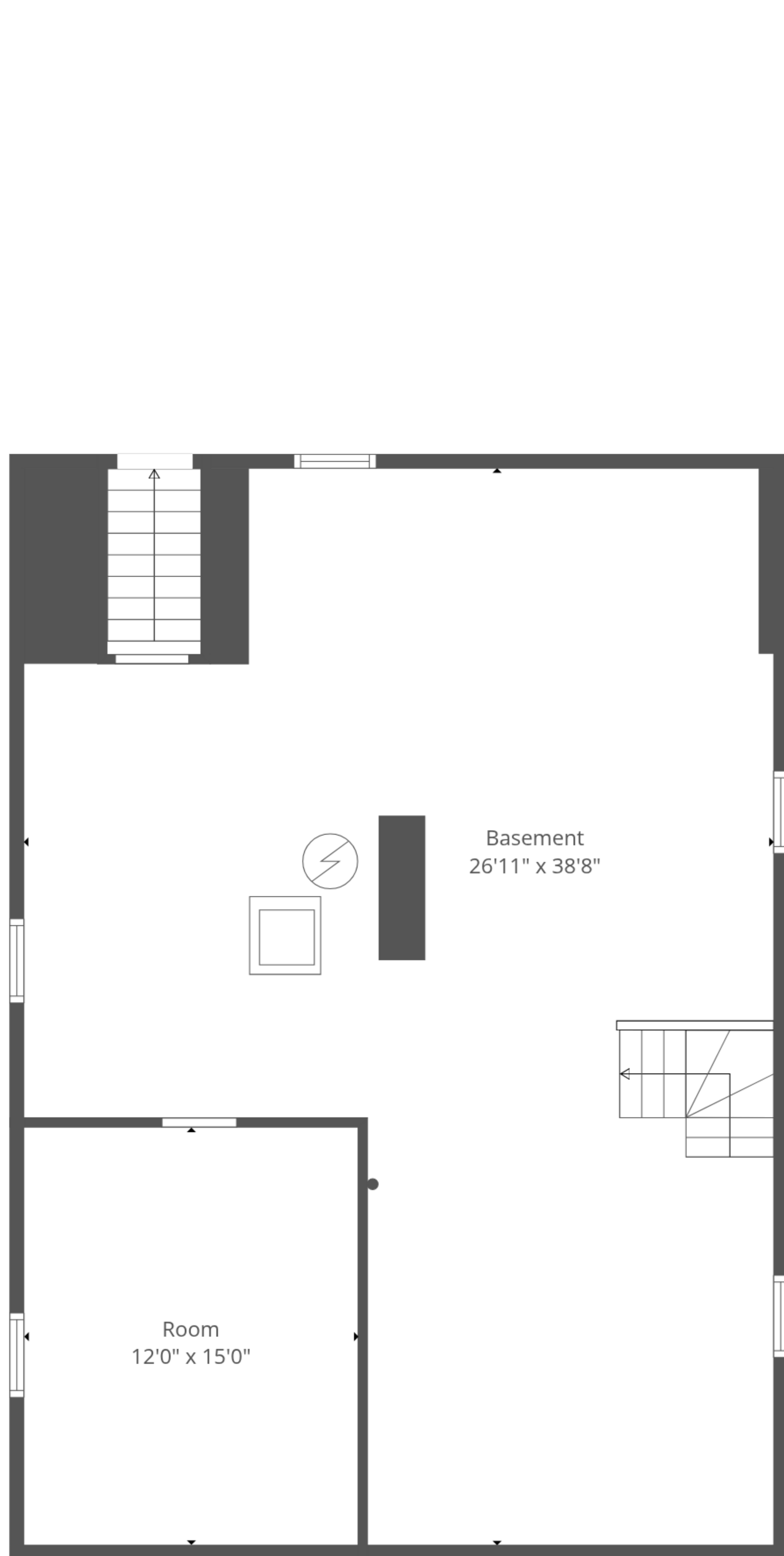
TOTAL: 2054 sq. ft

Basement: 28 sq. ft, 1st floor: 1060 sq. ft, 2nd floor: 831 sq. ft, 3rd floor: 135 sq. ft
 EXCLUDED AREAS: BASEMENT: 833 sq. ft, ROOM: 180 sq. ft, PORCH: 226 sq. ft,
 DECK: 240 sq. ft, BAY WINDOW: 5 sq. ft, LOW CEILING: 306 sq. ft,
 ATTIC: 115 sq. ft, WALLS: 250 sq. ft

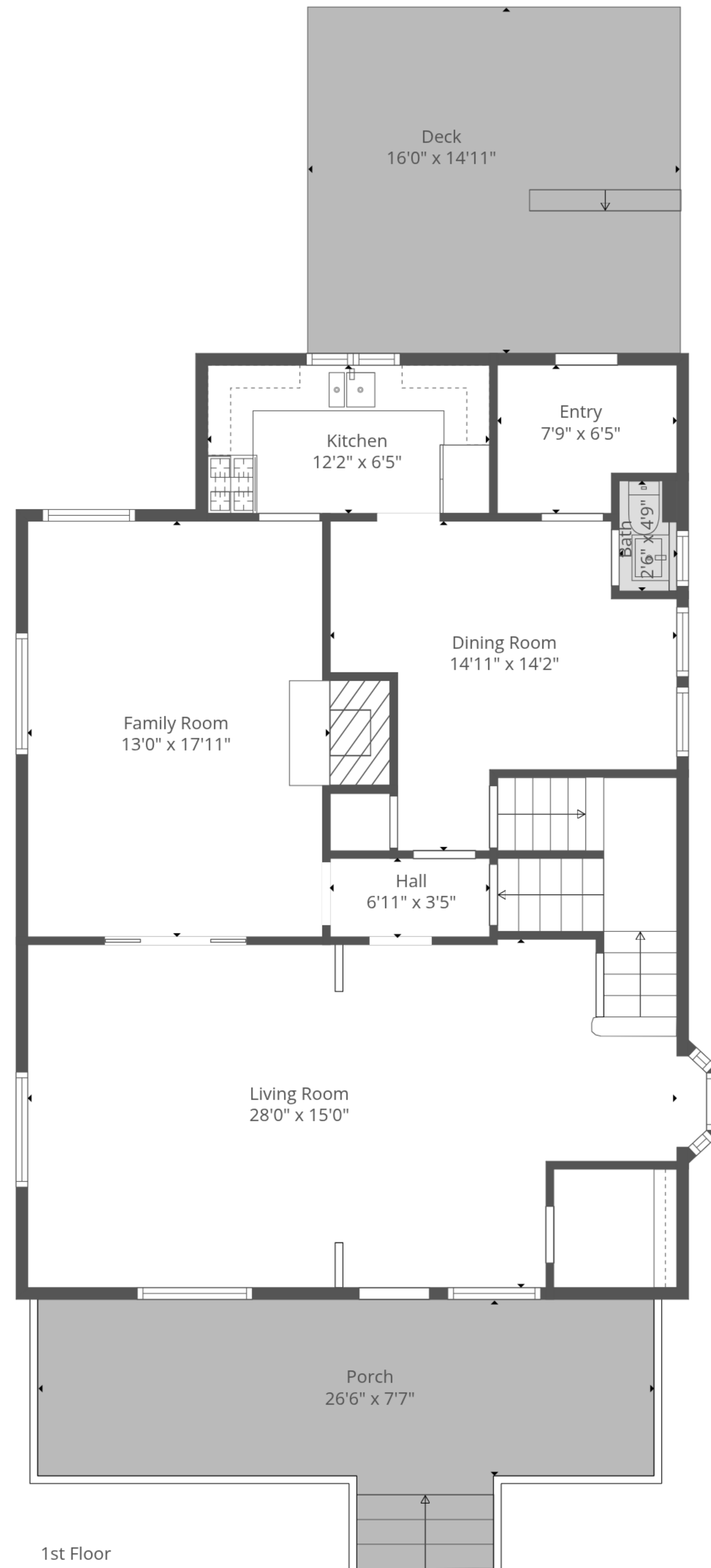


TOTAL: 2054 sq. ft

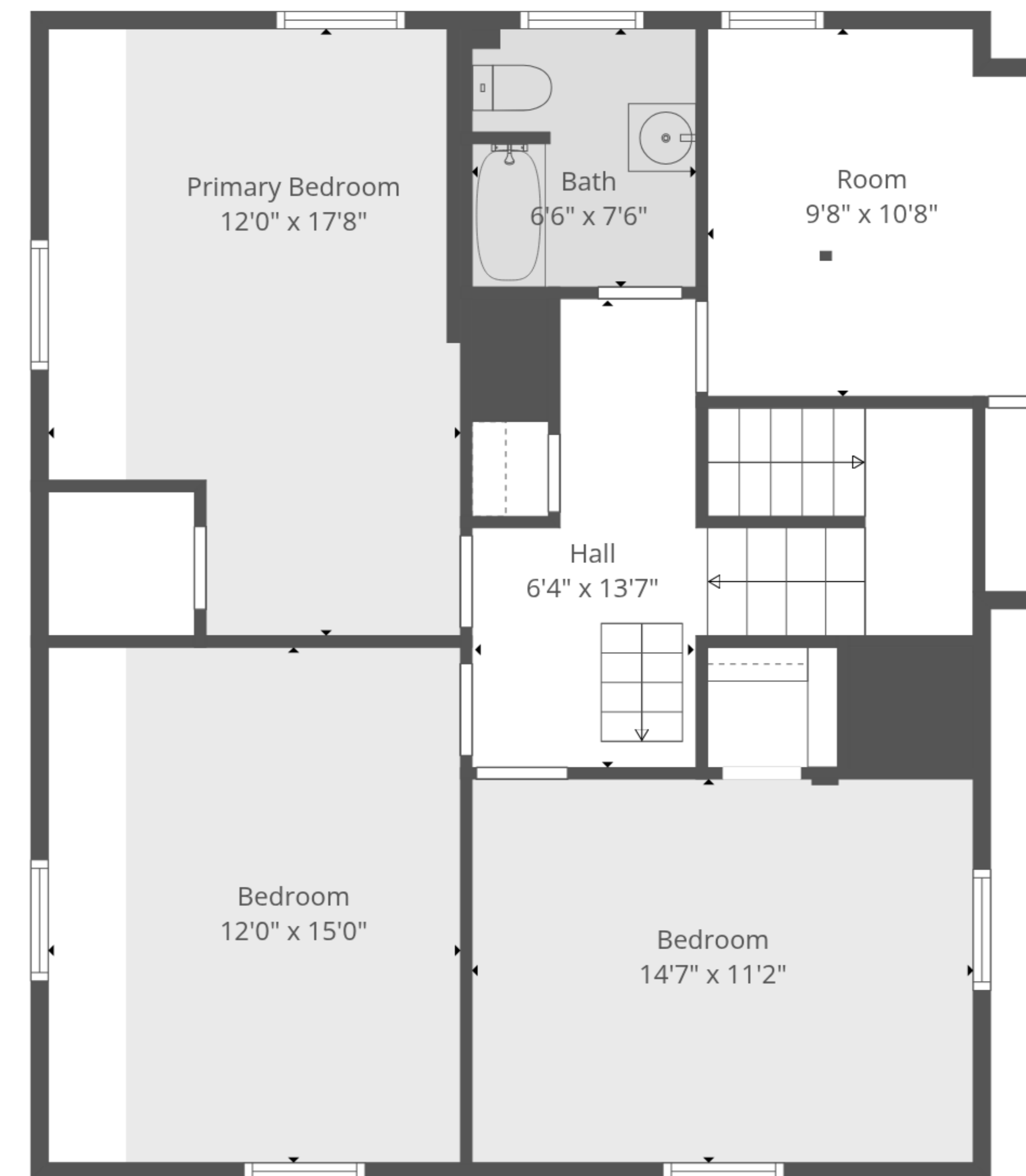
Basement: 28 sq. ft, 1st floor: 1060 sq. ft, 2nd floor: 831 sq. ft, 3rd floor: 135 sq. ft
EXCLUDED AREAS: BASEMENT: 833 sq. ft, ROOM: 180 sq. ft, PORCH: 226 sq. ft,
DECK: 240 sq. ft, BAY WINDOW: 5 sq. ft, LOW CEILING: 306 sq. ft,
ATTIC: 115 sq. ft, WALLS: 250 sq. ft



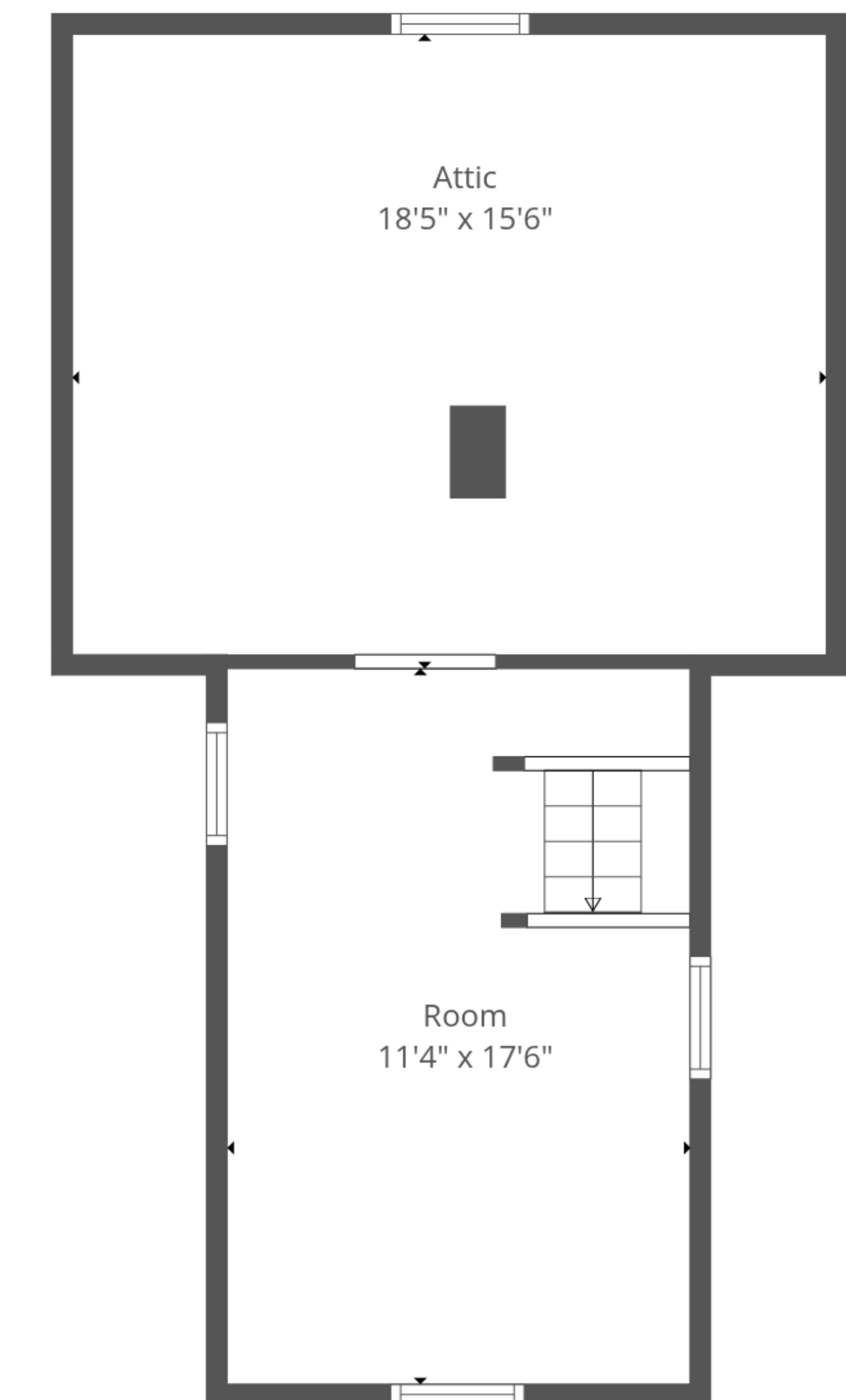
Basement



1st Floor



2nd Floor



3rd Floor

TOTAL: 2054 sq. ft

Basement: 28 sq. ft, 1st floor: 1060 sq. ft, 2nd floor: 831 sq. ft, 3rd floor: 135 sq. ft
 EXCLUDED AREAS: BASEMENT: 833 sq. ft, ROOM: 180 sq. ft, PORCH: 226 sq. ft,
 DECK: 240 sq. ft, BAY WINDOW: 5 sq. ft, LOW CEILING: 306 sq. ft,
 ATTIC: 115 sq. ft, WALLS: 250 sq. ft