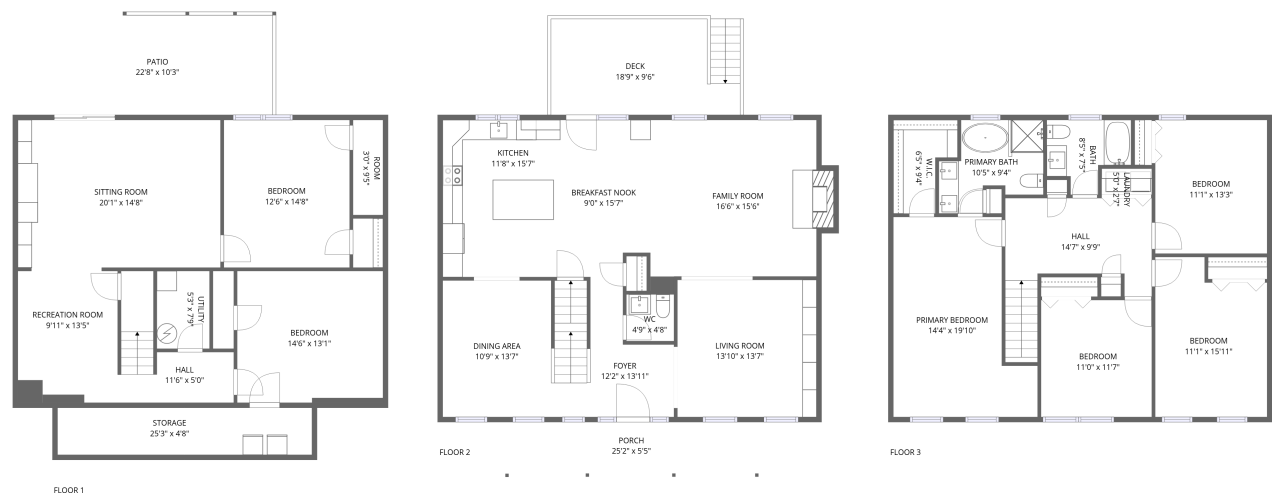


Home report

501 Jefferson Street, Winchester, Winchester city, Virginia,
United States, 22601



Total Area: 3181 sq. ft

Below Ground: 990 sq. ft, Floor 2: 1097 sq. ft, Floor 3: 1094 sq. ft

Excluded: Storage 118 sq. ft, Utility 40 sq. ft, Patio 227 sq. ft, Porch 137 sq. ft, Deck 158 sq. ft, Fireplace 11 sq. ft, Walls: 203 sq. ft

Property summary

 **3** Floors

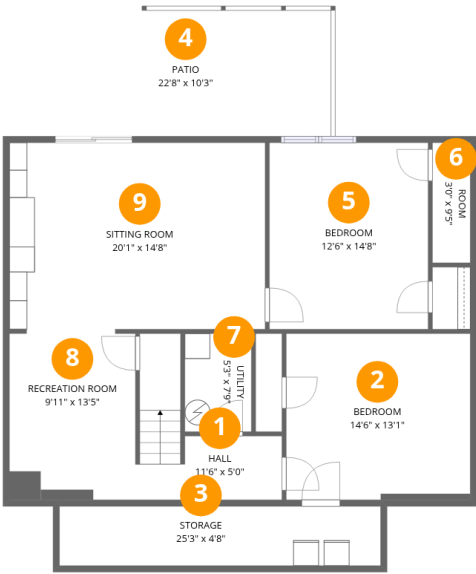
 **6** Bedrooms

 **2** Bathrooms

 **1** Half baths

Home report

501 Jefferson Street, Winchester, Winchester city, Virginia,
United States, 22601



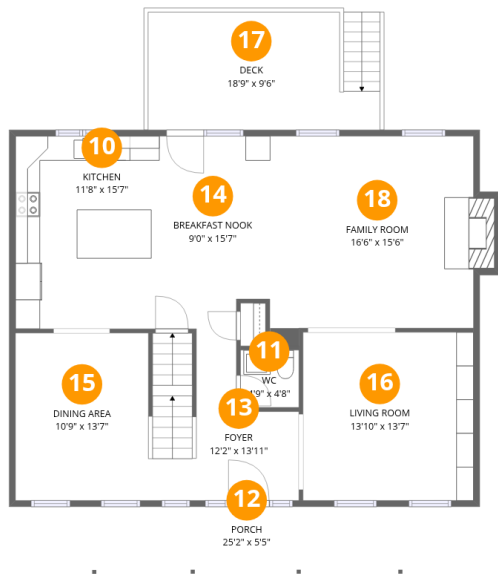
Room dimensions

Floor 1 Below ground Total:990sqft Excluded: 385sqft

#		Max Dimensions	sqft	Included
1	Hall	11'6" x 5'0"	82 sq. ft	Yes
2	Bedroom	14'6" x 13'1"	189 sq. ft	Yes
3	Storage	25'3" x 4'8"	118 sq. ft	No
4	Patio	22'8" x 10'3"	227 sq. ft	No
5	Bedroom	12'6" x 14'8"	183 sq. ft	Yes
6	Room	3'0" x 9'5"	28 sq. ft	Yes
7	Utility	5'3" x 7'9"	40 sq. ft	No
8	Recreation Room	9'11" x 13'5"	132 sq. ft	Yes
9	Sitting Room	20'1" x 14'8"	295 sq. ft	Yes

Home report

501 Jefferson Street, Winchester, Winchester city, Virginia,
United States, 22601



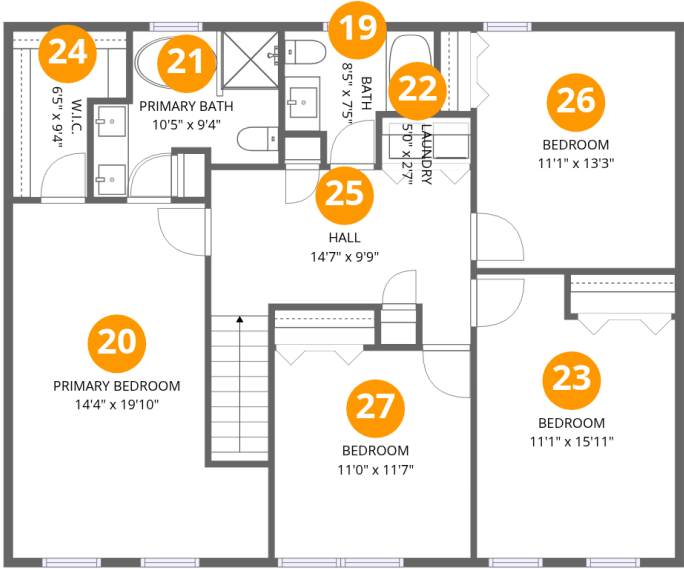
Room dimensions

Floor 2 Total:1097sqft Excluded: 306sqft

#		Max Dimensions	sqft	Included
10	Kitchen	11'8" x 15'7"	182 sq. ft	Yes
11	WC	4'9" x 4'8"	22 sq. ft	Yes
12	Porch	25'2" x 5'5"	137 sq. ft	No
13	Foyer	12'2" x 13'11"	130 sq. ft	Yes
14	Breakfast Nook	9'0" x 15'7"	133 sq. ft	Yes
15	Dining Area	10'9" x 13'7"	146 sq. ft	Yes
16	Living Room	13'10" x 13'7"	188 sq. ft	Yes
17	Deck	18'9" x 9'6"	158 sq. ft	No
18	Family Room	16'6" x 15'6"	270 sq. ft	Yes

Home report

501 Jefferson Street, Winchester, Winchester city, Virginia,
United States, 22601



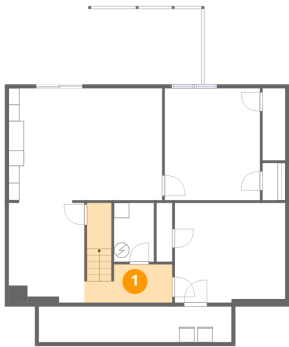
Room dimensions

Floor 3 Total:1094sqft Excluded: 0sqft

#		Max Dimensions	sqft	Included
19	Bath	8'5" x 7'5"	48 sq. ft	Yes
20	Primary Bedroom	14'4" x 19'10"	232 sq. ft	Yes
21	Primary Bath	10'5" x 9'4"	74 sq. ft	Yes
22	Laundry	5'0" x 2'7"	13 sq. ft	Yes
23	Bedroom	11'1" x 15'11"	161 sq. ft	Yes
24	W.I.C.	6'5" x 9'4"	47 sq. ft	Yes
25	Hall	14'7" x 9'9"	144 sq. ft	Yes
26	Bedroom	11'1" x 13'3"	148 sq. ft	Yes
27	Bedroom	11'0" x 11'7"	128 sq. ft	Yes

501 Jefferson Street, Winchester, Winchester city, Virginia,
United States, 22601

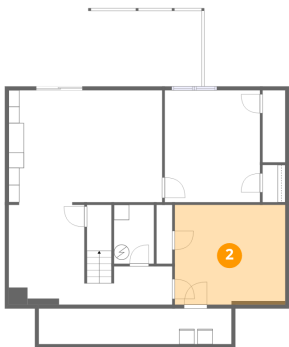
1 Floor 1 - Hall



Max Dimensions: 11'6" x 5'0"
Calculated Area: 82 sq. ft
Included: Yes

Heated: Yes
Finished: Yes
Enclosed: Yes
Contiguous: Yes
Permitted: Yes
Wet space: No
Addition: No
Conversion: No

2 Floor 1 - Bedroom

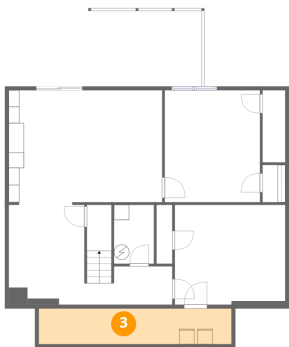


Max Dimensions: 14'6" x 13'1"
Calculated Area: 189 sq. ft
Included: Yes

Heated: Yes
Finished: Yes
Enclosed: Yes
Contiguous: Yes
Permitted: Yes
Wet space: No
Addition: No
Conversion: No

501 Jefferson Street, Winchester, Winchester city, Virginia,
United States, 22601

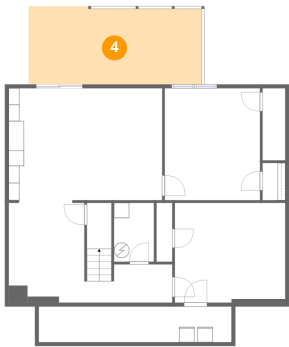
3 Floor 1 - Storage



Max Dimensions: 25'3" x 4'8"
Calculated Area: 118 sq. ft
Included: No

Heated: No
Finished: No
Enclosed: No
Contiguous: Yes
Permitted: Yes
Wet space: No
Addition: No
Conversion: No

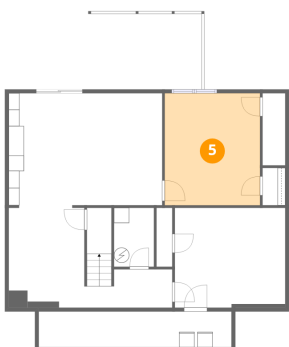
4 Floor 1 - Patio



Max Dimensions: 22'8" x 10'3"
Calculated Area: 227 sq. ft
Included: No

Heated: No
Finished: No
Enclosed: No
Contiguous: Yes
Permitted: Yes
Wet space: No
Addition: No
Conversion: No

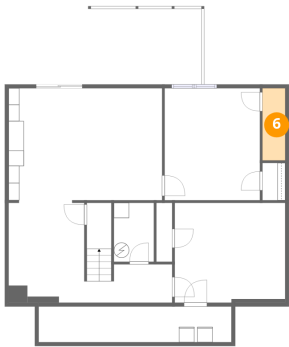
5 Floor 1 - Bedroom



Max Dimensions: 12'6" x 14'8"
Calculated Area: 183 sq. ft
Included: Yes

Heated: Yes
Finished: Yes
Enclosed: Yes
Contiguous: Yes
Permitted: Yes
Wet space: No
Addition: No
Conversion: No

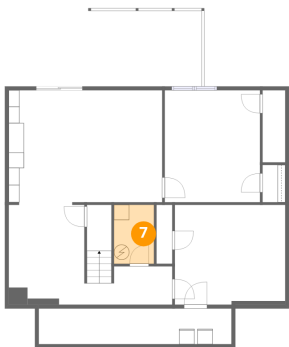
6 Floor 1 - Room



Max Dimensions: 3'0" x 9'5"
Calculated Area: 28 sq. ft
Included: Yes

Heated: Yes
Finished: Yes
Enclosed: Yes
Contiguous: Yes
Permitted: Yes
Wet space: No
Addition: No
Conversion: No

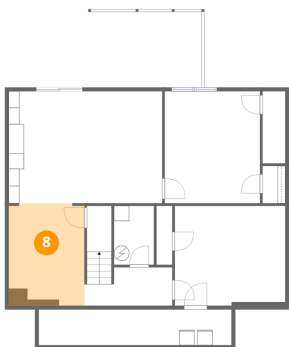
7 Floor 1 - Utility



Max Dimensions: 5'3" x 7'9"
Calculated Area: 40 sq. ft
Included: No

Heated: Yes
Finished: No
Enclosed: Yes
Contiguous: Yes
Permitted: Yes
Wet space: No
Addition: No
Conversion: No

8 Floor 1 - Recreation Room

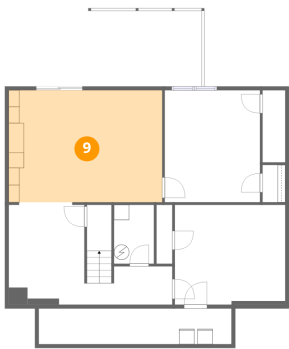


Max Dimensions: 9'11" x 13'5"
Calculated Area: 132 sq. ft
Included: Yes

Heated: Yes
Finished: Yes
Enclosed: Yes
Contiguous: Yes
Permitted: Yes
Wet space: No
Addition: No
Conversion: No

501 Jefferson Street, Winchester, Winchester city, Virginia,
United States, 22601

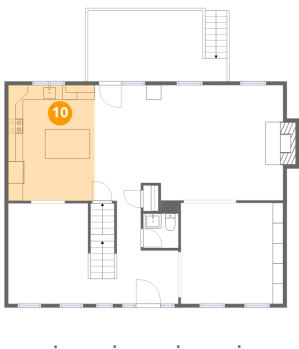
9 Floor 1 - Sitting Room



Max Dimensions: 20'1" x 14'8"
Calculated Area: 295 sq. ft
Included: Yes

Heated: Yes
Finished: Yes
Enclosed: Yes
Contiguous: Yes
Permitted: Yes
Wet space: No
Addition: No
Conversion: No

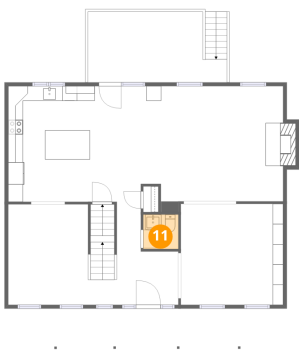
10 Floor 2 - Kitchen



Max Dimensions: 11'8" x 15'7"
Calculated Area: 182 sq. ft
Included: Yes

Heated: Yes
Finished: Yes
Enclosed: Yes
Contiguous: Yes
Permitted: Yes
Wet space: No
Addition: No
Conversion: No

11 Floor 2 - WC



Max Dimensions: 4'9" x 4'8"
Calculated Area: 22 sq. ft
Included: Yes

Heated: Yes
Finished: Yes
Enclosed: Yes
Contiguous: Yes
Permitted: Yes
Wet space: Yes
Addition: No
Conversion: No

501 Jefferson Street, Winchester, Winchester city, Virginia,
United States, 22601

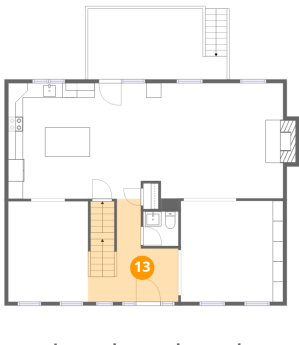
12 Floor 2 - Porch



Max Dimensions: 25'2" x 5'5"
Calculated Area: 137 sq. ft
Included: No

Heated: No
Finished: No
Enclosed: No
Contiguous: Yes
Permitted: Yes
Wet space: No
Addition: No
Conversion: No

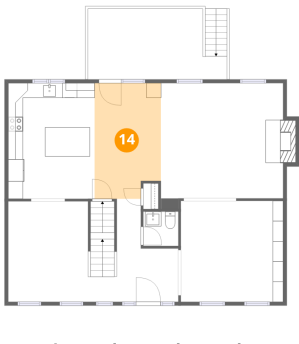
13 Floor 2 - Foyer



Max Dimensions: 12'2" x 13'11"
Calculated Area: 130 sq. ft
Included: Yes

Heated: Yes
Finished: Yes
Enclosed: Yes
Contiguous: Yes
Permitted: Yes
Wet space: No
Addition: No
Conversion: No

14 Floor 2 - Breakfast Nook



Max Dimensions: 9'0" x 15'7"
Calculated Area: 133 sq. ft
Included: Yes

Heated: Yes
Finished: Yes
Enclosed: Yes
Contiguous: Yes
Permitted: Yes
Wet space: No
Addition: No
Conversion: No

501 Jefferson Street, Winchester, Winchester city, Virginia,
United States, 22601

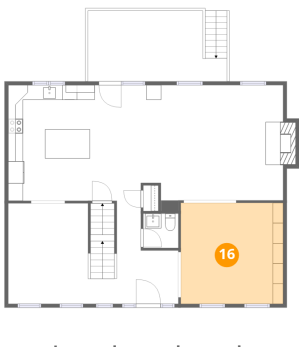
15 Floor 2 - Dining Area



Max Dimensions: 10'9" x 13'7"
Calculated Area: 146 sq. ft
Included: Yes

Heated: Yes
Finished: Yes
Enclosed: Yes
Contiguous: Yes
Permitted: Yes
Wet space: No
Addition: No
Conversion: No

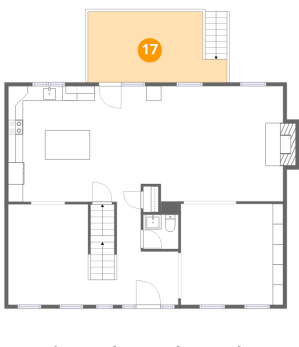
16 Floor 2 - Living Room



Max Dimensions: 13'10" x 13'7"
Calculated Area: 188 sq. ft
Included: Yes

Heated: Yes
Finished: Yes
Enclosed: Yes
Contiguous: Yes
Permitted: Yes
Wet space: No
Addition: No
Conversion: No

17 Floor 2 - Deck



Max Dimensions: 18'9" x 9'6"
Calculated Area: 158 sq. ft
Included: No

Heated: No
Finished: No
Enclosed: No
Contiguous: Yes
Permitted: Yes
Wet space: No
Addition: No
Conversion: No

501 Jefferson Street, Winchester, Winchester city, Virginia,
United States, 22601

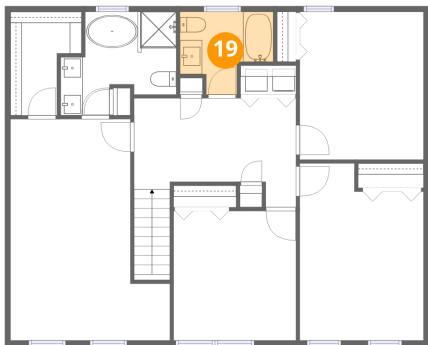
18 Floor 2 - Family Room



Max Dimensions: 16'6" x 15'6"
Calculated Area: 270 sq. ft
Included: Yes

Heated: Yes
Finished: Yes
Enclosed: Yes
Contiguous: Yes
Permitted: Yes
Wet space: No
Addition: No
Conversion: No

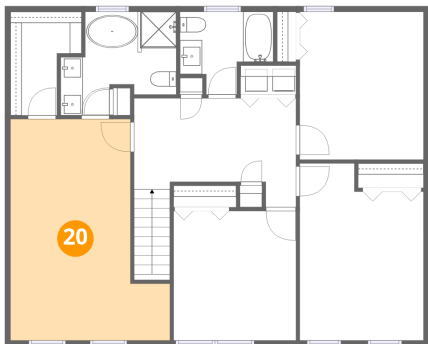
19 Floor 3 - Bath



Max Dimensions: 8'5" x 7'5"
Calculated Area: 48 sq. ft
Included: Yes

Heated: Yes
Finished: Yes
Enclosed: Yes
Contiguous: Yes
Permitted: Yes
Wet space: Yes
Addition: No
Conversion: No

20 Floor 3 - Primary Bedroom

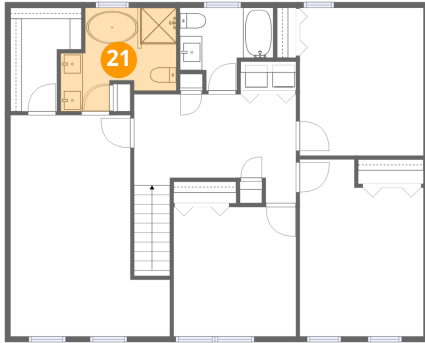


Max Dimensions: 14'4" x 19'10"
Calculated Area: 232 sq. ft
Included: Yes

Heated: Yes
Finished: Yes
Enclosed: Yes
Contiguous: Yes
Permitted: Yes
Wet space: No
Addition: No
Conversion: No

501 Jefferson Street, Winchester, Winchester city, Virginia,
United States, 22601

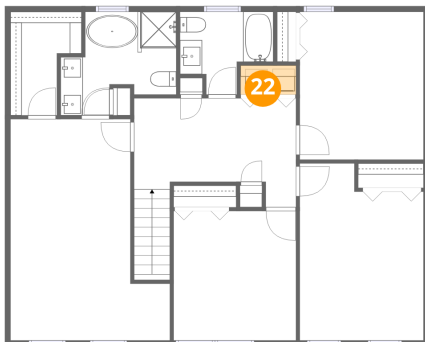
21 Floor 3 - Primary Bath



Max Dimensions: 10'5" x 9'4"
Calculated Area: 74 sq. ft
Included: Yes

Heated: Yes
Finished: Yes
Enclosed: Yes
Contiguous: Yes
Permitted: Yes
Wet space: Yes
Addition: No
Conversion: No

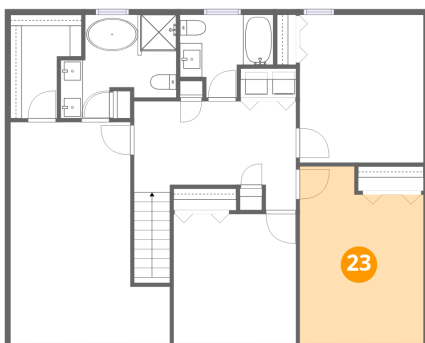
22 Floor 3 - Laundry



Max Dimensions: 5'0" x 2'7"
Calculated Area: 13 sq. ft
Included: Yes

Heated: Yes
Finished: Yes
Enclosed: Yes
Contiguous: Yes
Permitted: Yes
Wet space: No
Addition: No
Conversion: No

23 Floor 3 - Bedroom



Max Dimensions: 11'1" x 15'11"
Calculated Area: 161 sq. ft
Included: Yes

Heated: Yes
Finished: Yes
Enclosed: Yes
Contiguous: Yes
Permitted: Yes
Wet space: No
Addition: No
Conversion: No

501 Jefferson Street, Winchester, Winchester city, Virginia,
United States, 22601

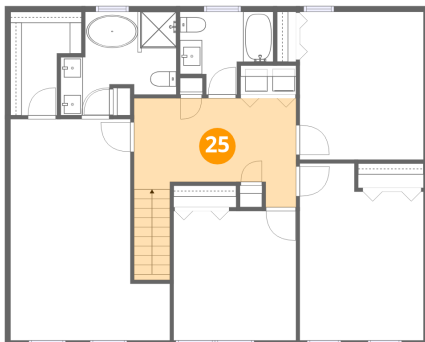
24 Floor 3 - W.I.C.



Max Dimensions: 6'5" x 9'4"
Calculated Area: 47 sq. ft
Included: Yes

Heated: Yes
Finished: Yes
Enclosed: Yes
Contiguous: Yes
Permitted: Yes
Wet space: No
Addition: No
Conversion: No

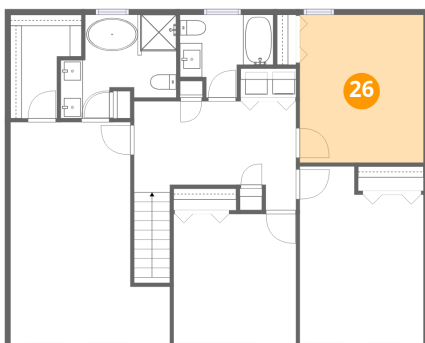
25 Floor 3 - Hall



Max Dimensions: 14'7" x 9'9"
Calculated Area: 144 sq. ft
Included: Yes

Heated: Yes
Finished: Yes
Enclosed: Yes
Contiguous: Yes
Permitted: Yes
Wet space: No
Addition: No
Conversion: No

26 Floor 3 - Bedroom

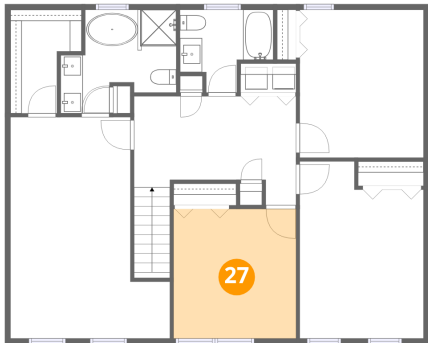


Max Dimensions: 11'1" x 13'3"
Calculated Area: 148 sq. ft
Included: Yes

Heated: Yes
Finished: Yes
Enclosed: Yes
Contiguous: Yes
Permitted: Yes
Wet space: No
Addition: No
Conversion: No

501 Jefferson Street, Winchester, Winchester city, Virginia,
United States, 22601

27 Floor 3 - Bedroom



Max Dimensions: 11'0" x 11'7"
Calculated Area: 128 sq. ft
Included: Yes

Heated: Yes
Finished: Yes
Enclosed: Yes
Contiguous: Yes
Permitted: Yes
Wet space: No
Addition: No
Conversion: No