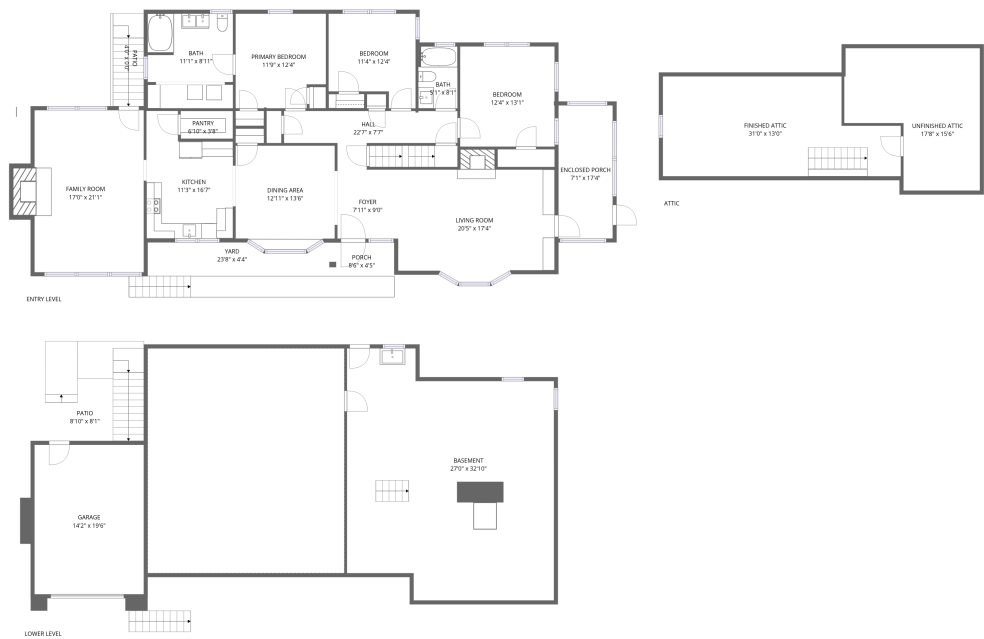


Home data report

2616 Hollowdale Drive, Clearview Heights, Cave Spring,  
Roanoke, Roanoke County, Virginia, United States, 24018



**Total Area: 2276 sq. ft**  
1st Floor: 0 sq. ft, 2nd Floor: 1893 sq. ft, 3rd Floor: 383 sq. ft  
Excluded: Basement 787 sq. ft, Garage 277 sq. ft, Crawl space 750 sq. ft, Patio 214 sq. ft,  
Enclosed porch 123 sq. ft, Porch 37 sq. ft, Fireplace 20 sq. ft, Low ceiling 239 sq. ft,  
Walls: 293 sq. ft

Property summary

**3**  
Floors

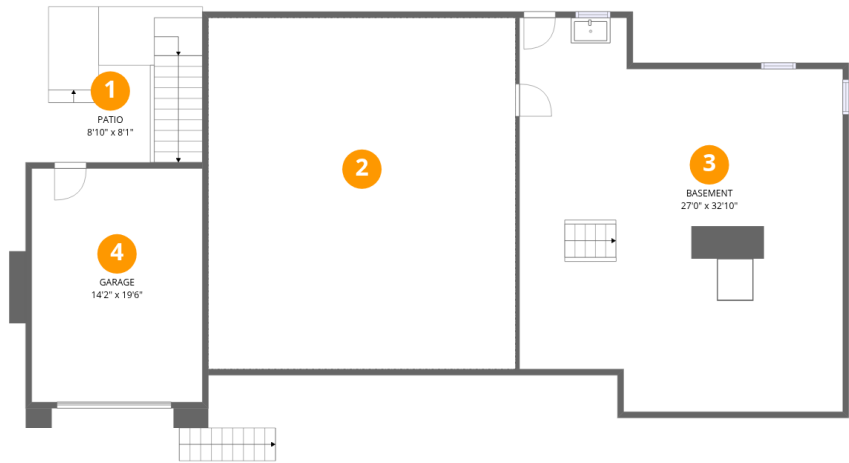
**3**  
Bedrooms

**2**  
Bathrooms

**1**  
Garages

Home data report

2616 Hollowdale Drive, Clearview Heights, Cave Spring,  
Roanoke, Roanoke County, Virginia, United States, 24018

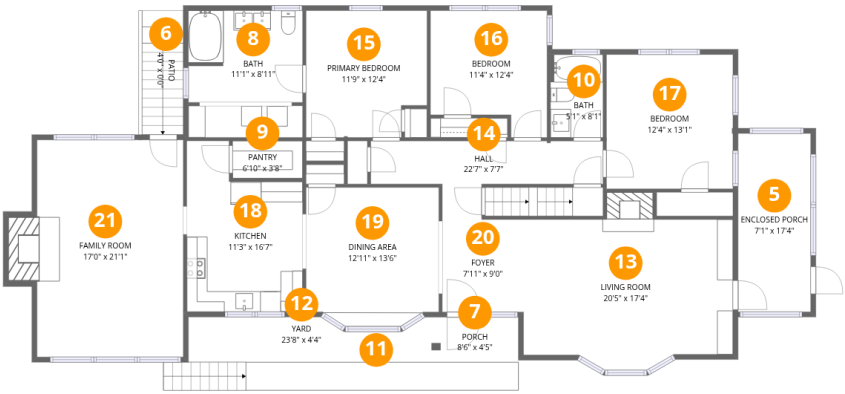


Room dimensions

Floor 1 Total:0sqft   Excluded: 1980sqft

#		Dimensions	sqft	Counted as living area
1	Patio	8'10" x 8'1"	71 sq. ft	No
2	Crawl Space	25'7" x 29'3"	750 sq. ft	No
3	Basement	27'0" x 32'10"	885 sq. ft	No
4	Garage	14'2" x 19'6"	276 sq. ft	No

2616 Hollowdale Drive, Clearview Heights, Cave Spring,  
Roanoke, Roanoke County, Virginia, United States, 24018



Room dimensions

Floor 2 Total:1893sqft Excluded: 228sqft

#		Dimensions	sqft	Counted as living area
5	Enclosed Porch	7'1" x 17'4"	123 sq. ft	No
6	Patio	4'0" x 0'0"	0 sq. ft	No
7	Porch	8'6" x 4'5"	37 sq. ft	No
8	Bath	11'1" x 8'11"	99 sq. ft	Yes
9	Pantry	6'10" x 3'8"	25 sq. ft	Yes
10	Bath	5'1" x 8'1"	41 sq. ft	Yes
11	Walking Path	26'6" x 2'8"	72 sq. ft	No
12	Yard	23'8" x 4'4"	103 sq. ft	No
13	Living Room	20'5" x 17'4"	353 sq. ft	Yes
14	Hall	22'7" x 7'7"	171 sq. ft	Yes
15	Primary Bedroom	11'9" x 12'4"	145 sq. ft	Yes

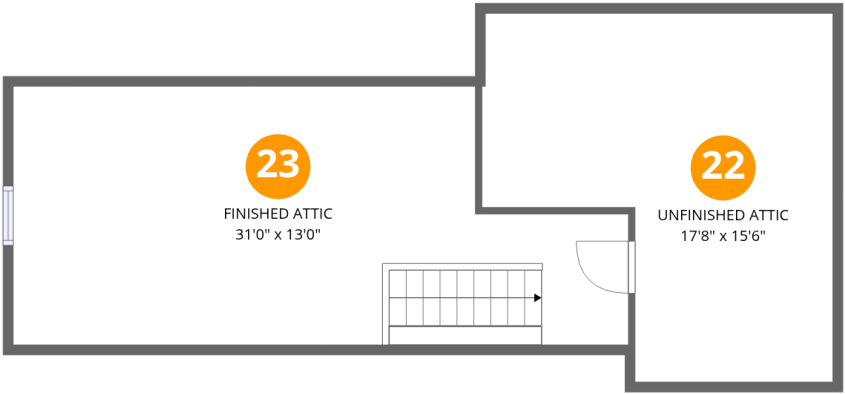
## Home data report

**2616 Hollowdale Drive, Clearview Heights, Cave Spring,  
Roanoke, Roanoke County, Virginia, United States, 24018**

#		Dimensions	sqft	Counted as living area
16	Bedroom	11'4" x 12'4"	140 sq. ft	Yes
17	Bedroom	12'4" x 13'1"	161 sq. ft	Yes
18	Kitchen	11'3" x 16'7"	187 sq. ft	Yes
19	Dining Area	12'11" x 13'6"	175 sq. ft	Yes
20	Foyer	7'11" x 9'0"	71 sq. ft	Yes
21	Family Room	17'0" x 21'1"	359 sq. ft	Yes

Home data report

2616 Hollowdale Drive, Clearview Heights, Cave Spring,  
Roanoke, Roanoke County, Virginia, United States, 24018

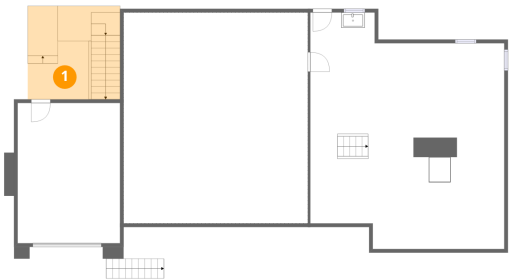


Room dimensions

Floor 3 Total:383sqft   Excluded: 239sqft

#		Dimensions	sqft	Counted as living area
22	Unfinished Attic	17'8" x 15'6"	274 sq. ft	Yes
23	Finished Attic	31'0" x 13'0"	403 sq. ft	Yes

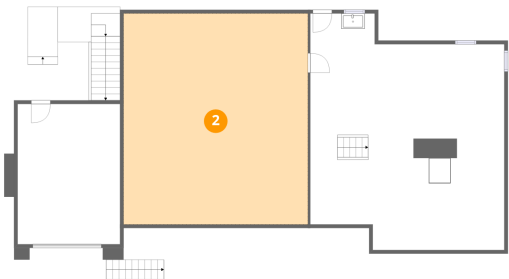
1 Floor 1 - Patio



Dimensions: 8'10" x 8'1"  
Area: 71 sq. ft  
Counted as living area: No

Heated: No  
Finished: No  
Enclosed: No  
Contiguous: Yes  
Permitted: Yes  
Wet space: No  
Addition: No  
Conversion: No

2 Floor 1 - Crawl Space



Dimensions: 25'7" x 29'3"  
Area: 750 sq. ft  
Counted as living area: No

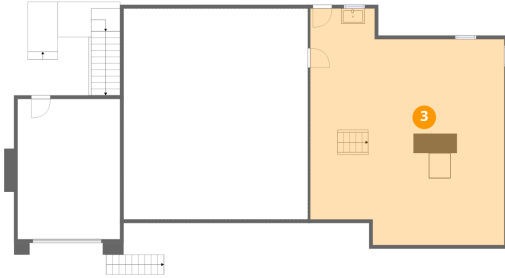
Heated: No  
Finished: No  
Enclosed: No  
Contiguous: No  
Permitted: No  
Wet space: No  
Addition: No  
Conversion: No

## Home data report

2616 Hollowdale Drive, Clearview Heights, Cave Spring,  
Roanoke, Roanoke County, Virginia, United States, 24018

### 3 Floor 1 - Basement

---

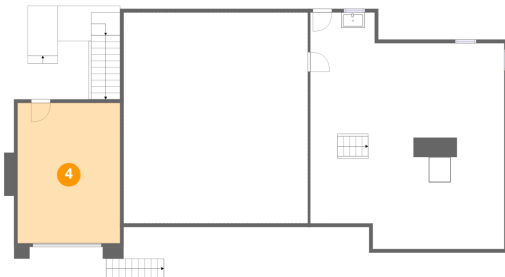


Dimensions: 27'0" x 32'10"  
Area: 885 sq. ft  
Counted as living area: No

Heated: Yes  
Finished: No  
Enclosed: Yes  
Contiguous: Yes  
Permitted: Yes  
Wet space: No  
Addition: No  
Conversion: No

### 4 Floor 1 - Garage

---



Dimensions: 14'2" x 19'6"  
Area: 276 sq. ft  
Counted as living area: No

Heated: No  
Finished: No  
Enclosed: Yes  
Contiguous: Yes  
Permitted: Yes  
Wet space: No  
Addition: No  
Conversion: No

### 5 Floor 2 - Enclosed Porch

---



Dimensions: 7'1" x 17'4"  
Area: 123 sq. ft  
Counted as living area: No

Heated: No  
Finished: No  
Enclosed: No  
Contiguous: Yes  
Permitted: Yes  
Wet space: No  
Addition: No  
Conversion: No

## Home data report

2616 Hollowdale Drive, Clearview Heights, Cave Spring,  
Roanoke, Roanoke County, Virginia, United States, 24018

### 6 Floor 2 - Patio



Dimensions: 4'0" x 0'0"  
Area: 0 sq. ft  
Counted as living area: No

Heated: No  
Finished: No  
Enclosed: No  
Contiguous: Yes  
Permitted: Yes  
Wet space: No  
Addition: No  
Conversion: No

### 7 Floor 2 - Porch



Dimensions: 8'6" x 4'5"  
Area: 37 sq. ft  
Counted as living area: No

Heated: No  
Finished: No  
Enclosed: No  
Contiguous: Yes  
Permitted: Yes  
Wet space: No  
Addition: No  
Conversion: No

### 8 Floor 2 - Bath



Dimensions: 11'1" x 8'11"  
Area: 99 sq. ft  
Counted as living area: Yes

Heated: Yes  
Finished: Yes  
Enclosed: Yes  
Contiguous: Yes  
Permitted: Yes  
Wet space: Yes  
Addition: No  
Conversion: No



2616 Hollowdale Drive, Clearview Heights, Cave Spring,  
Roanoke, Roanoke County, Virginia, United States, 24018

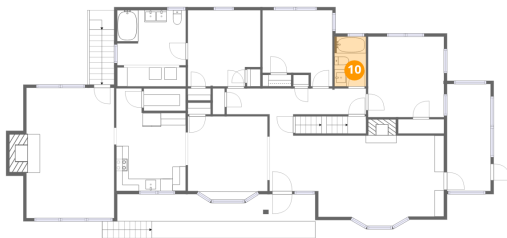
## 9 Floor 2 - Pantry



Dimensions: 6'10" x 3'8"  
Area: 25 sq. ft  
Counted as living area: Yes

Heated: Yes  
Finished: Yes  
Enclosed: Yes  
Contiguous: Yes  
Permitted: Yes  
Wet space: No  
Addition: No  
Conversion: No

## 10 Floor 2 - Bath



Dimensions: 5'1" x 8'1"  
Area: 41 sq. ft  
Counted as living area: Yes

Heated: Yes  
Finished: Yes  
Enclosed: Yes  
Contiguous: Yes  
Permitted: Yes  
Wet space: Yes  
Addition: No  
Conversion: No

## 11 Floor 2 - Walking Path



Dimensions: 26'6" x 2'8"  
Area: 72 sq. ft  
Counted as living area: No

Heated: No  
Finished: No  
Enclosed: No  
Contiguous: Yes  
Permitted: No  
Wet space: No  
Addition: No  
Conversion: No

## Home data report

2616 Hollowdale Drive, Clearview Heights, Cave Spring,  
Roanoke, Roanoke County, Virginia, United States, 24018

### 12 Floor 2 - Yard



Dimensions: 23'8" x 4'4"  
Area: 103 sq. ft  
Counted as living area: No

Heated: No  
Finished: No  
Enclosed: No  
Contiguous: Yes  
Permitted: No  
Wet space: No  
Addition: No  
Conversion: No

### 13 Floor 2 - Living Room



Dimensions: 20'5" x 17'4"  
Area: 353 sq. ft  
Counted as living area: Yes

Heated: Yes  
Finished: Yes  
Enclosed: Yes  
Contiguous: Yes  
Permitted: Yes  
Wet space: No  
Addition: No  
Conversion: No

### 14 Floor 2 - Hall



Dimensions: 22'7" x 7'7"  
Area: 171 sq. ft  
Counted as living area: Yes

Heated: Yes  
Finished: Yes  
Enclosed: Yes  
Contiguous: Yes  
Permitted: Yes  
Wet space: No  
Addition: No  
Conversion: No

2616 Hollowdale Drive, Clearview Heights, Cave Spring,  
Roanoke, Roanoke County, Virginia, United States, 24018

## 15 Floor 2 - Primary Bedroom



Dimensions: 11'9" x 12'4"  
Area: 145 sq. ft  
Counted as living area: Yes

Heated: Yes  
Finished: Yes  
Enclosed: Yes  
Contiguous: Yes  
Permitted: Yes  
Wet space: No  
Addition: No  
Conversion: No

## 16 Floor 2 - Bedroom



Dimensions: 11'4" x 12'4"  
Area: 140 sq. ft  
Counted as living area: Yes

Heated: Yes  
Finished: Yes  
Enclosed: Yes  
Contiguous: Yes  
Permitted: Yes  
Wet space: No  
Addition: No  
Conversion: No

## 17 Floor 2 - Bedroom



Dimensions: 12'4" x 13'1"  
Area: 161 sq. ft  
Counted as living area: Yes

Heated: Yes  
Finished: Yes  
Enclosed: Yes  
Contiguous: Yes  
Permitted: Yes  
Wet space: No  
Addition: No  
Conversion: No

2616 Hollowdale Drive, Clearview Heights, Cave Spring,  
Roanoke, Roanoke County, Virginia, United States, 24018

## 18 Floor 2 - Kitchen



Dimensions: 11'3" x 16'7"  
Area: 187 sq. ft  
Counted as living area: Yes

Heated: Yes  
Finished: Yes  
Enclosed: Yes  
Contiguous: Yes  
Permitted: Yes  
Wet space: No  
Addition: No  
Conversion: No

## 19 Floor 2 - Dining Area



Dimensions: 12'11" x 13'6"  
Area: 175 sq. ft  
Counted as living area: Yes

Heated: Yes  
Finished: Yes  
Enclosed: Yes  
Contiguous: Yes  
Permitted: Yes  
Wet space: No  
Addition: No  
Conversion: No

## 20 Floor 2 - Foyer



Dimensions: 7'11" x 9'0"  
Area: 71 sq. ft  
Counted as living area: Yes

Heated: Yes  
Finished: Yes  
Enclosed: Yes  
Contiguous: Yes  
Permitted: Yes  
Wet space: No  
Addition: No  
Conversion: No

2616 Hollowdale Drive, Clearview Heights, Cave Spring,  
Roanoke, Roanoke County, Virginia, United States, 24018

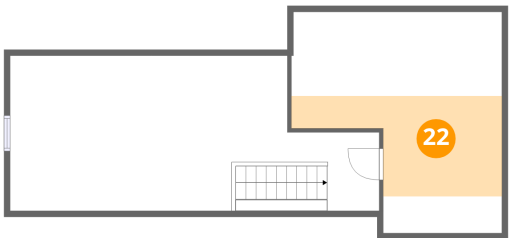
21 Floor 2 - Family Room



Dimensions: 17'0" x 21'1"  
Area: 359 sq. ft  
Counted as living area: Yes

Heated: Yes  
Finished: Yes  
Enclosed: Yes  
Contiguous: Yes  
Permitted: Yes  
Wet space: No  
Addition: No  
Conversion: No

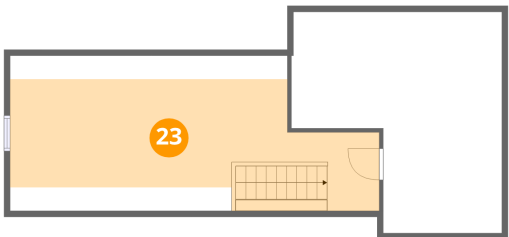
22 Floor 3 - Unfinished Attic



Dimensions: 17'8" x 15'6"  
Area: 274 sq. ft  
Counted as living area: Yes

Heated: Yes  
Finished: Yes  
Enclosed: Yes  
Contiguous: Yes  
Permitted: Yes  
Wet space: No  
Addition: No  
Conversion: No

23 Floor 3 - Finished Attic



Dimensions: 31'0" x 13'0"  
Area: 403 sq. ft  
Counted as living area: Yes

Heated: Yes  
Finished: Yes  
Enclosed: Yes  
Contiguous: Yes  
Permitted: Yes  
Wet space: No  
Addition: No  
Conversion: No